

**Division of Criminal Justice Services
Office of Justice Research & Performance**



New York State Crime Update

David A. Paterson
Governor

Denise E. O'Donnell
Deputy Secretary for Public Safety

**Crime in New York State
2008 Final Data**

This report and the attached appendices provide the most recent information available on the number of Index crimes and rates per 100,000 population for each county in New York State. County population data are provided every year by the FBI based on US Census estimates and are used to calculate crime rates. Crime counts are based on official crime reports submitted to DCJS through the Uniform Crime Reporting (UCR) and Incident Based Reporting (IBR) programs. Index offenses include the *violent* crimes of murder, forcible rape, robbery and aggravated assault, and the *property* crimes of burglary, larceny, and motor vehicle theft. The crime rates show the number of incidents reported per 100,000 residents.

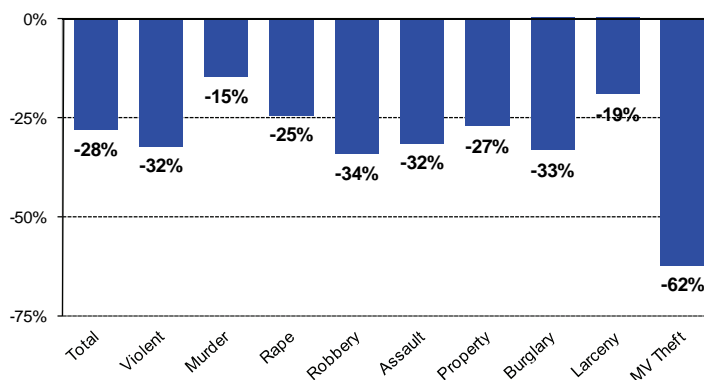
The summary includes information on crimes reported in New York State for the last 10 years. These figures include all reports received by DCJS as of August 13, 2009. These figures differ slightly from those published by the FBI. The FBI reports include estimations for agencies with incomplete reporting, and exclude data submitted after FBI deadlines.

Detailed information on crime data for each reporting agency from 2004 through 2008 is available on the DCJS website:
<http://criminaljustice.state.ny.us/crimnet/ojsa/indexcrimes/counties.htm>

Change in Crime Rates: 1999 vs. 2008

Over the past 10 years, the crime rate in New York State has declined steadily. The largest reductions in crime rate were reported for motor vehicle theft, robbery and burglary. Overall, the rate of index crimes per 100,000 resident population has declined 28% since 1999; the rate of violent crimes (murder, rape, robbery, and aggravated assault) fell 32% and property crimes (burglary, larceny, and motor vehicle theft) were down 27%. Appendix 1, which is attached, provides both crime counts and rates for each year.

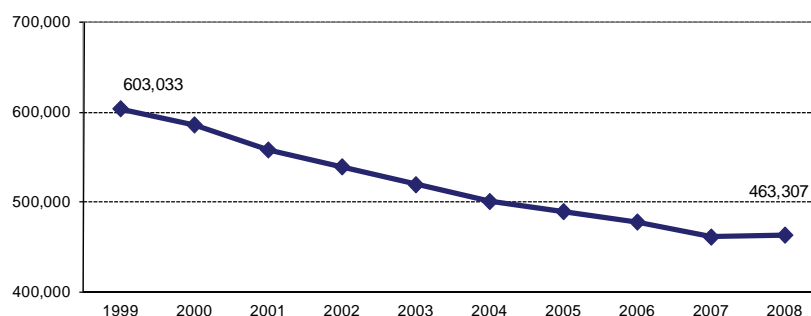
**Percentage Change in Crime Rates
1999 vs. 2008**



Trends in New York State Index Crime: 1999 to 2008

While New York State's crime rate has decreased over the past 10 years, New York has also reported a significant reduction in the actual number of crimes reported. The number of major crimes reported fell each year since 1999 until reaching the lowest levels ever recorded in 2007 before rising slightly in 2008. There were 139,726 fewer crimes reported in 2008 than in 1999, while the population of the State has increased by 1.3 million since 1999.

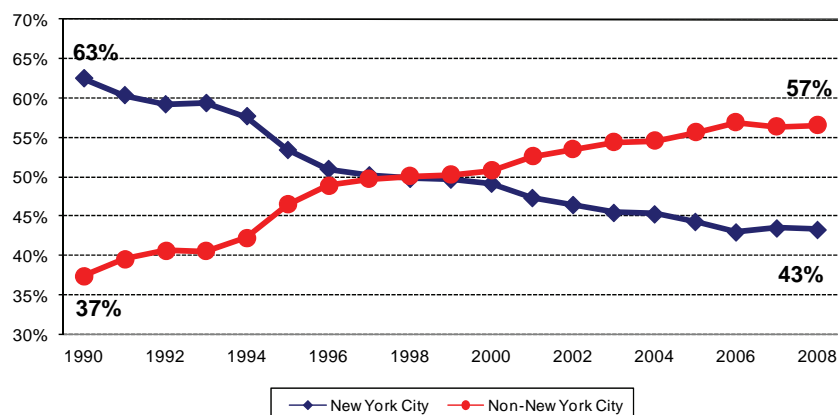
New York State Index Crime Counts



Trends in Regional Crime: 1999 to 2008

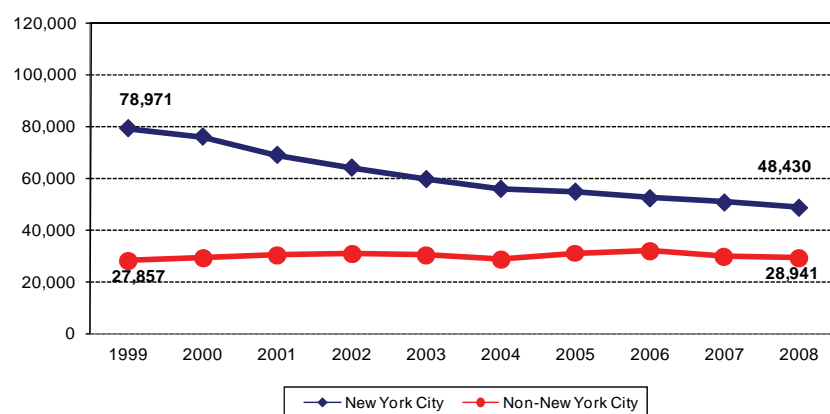
Not all areas of the State have benefited equally from the historic reduction in crime. The decline in Index crime in New York City was much larger than that experienced in counties outside of New York City. Appendix 2, which is attached, provides detail by region.

Regional Crime as a Percent of Statewide Crime



Given the greater decline in crime in New York City, the proportion of statewide crime that each region accounted for has shifted dramatically. The counties outside New York City now account for 57% of the reported crime statewide, as compared to 37% in 1990.

Regional Trends in Violent Crime

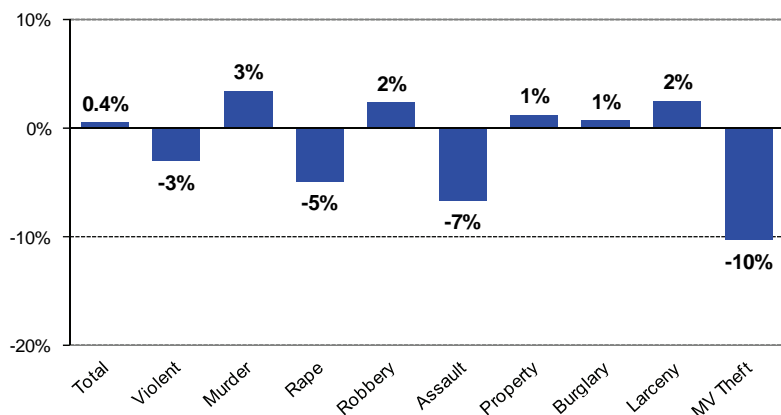


While a higher proportion of the State's violent crimes occurred in New York City, that region reported a 39% drop in violent crimes since 1999, while the Non-New York City counties reported an increase of 4%. All violent crime categories declined in New York City between 1999 and 2008 while the Non-New York City region reported increases in each violent offense category during the same period. The detail is provided in Appendix 2.

Recent Statewide Crime Trends: 2007 vs. 2008

The most recent 2008 crime data show that crime volume in New York State increased slightly between 2007 and 2008. This marks the first annual increase in crime since 1990.

**Percentage Change in Crime Volume
2007 vs. 2008**



In 2008, New York State reported an overall rise of 0.5% in the seven major Index crimes as compared to 2007.

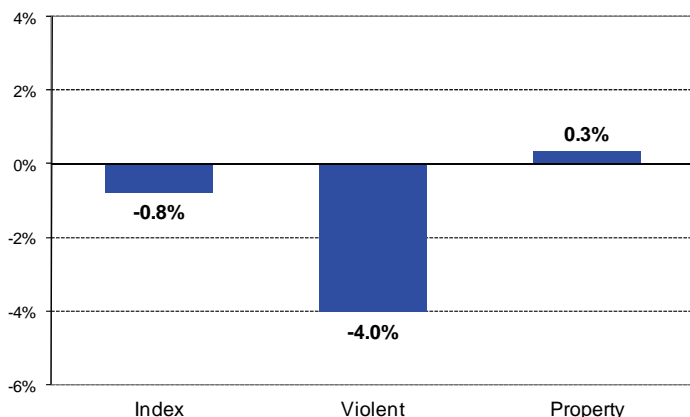
Violent crimes dropped by 3%. Both murders and robberies increased while rapes and assaults decreased.

Property crimes were up 1% due to slight increases in burglaries and larcenies, while motor vehicle thefts fell significantly.

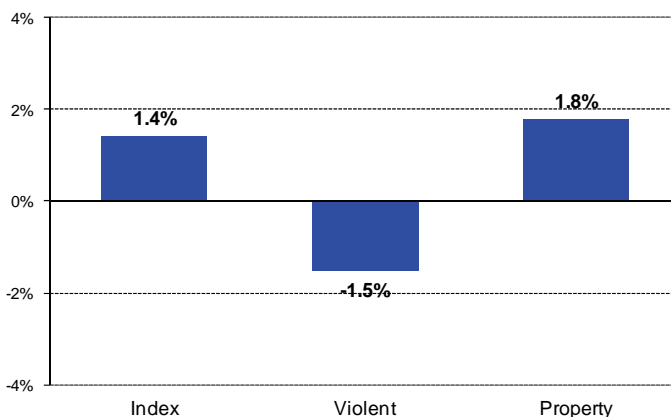
Percentage Change in Crime Volume by Region: 2007 vs. 2008

The New York City region reported declines in Index and violent crimes between 2007 and 2008 while property crimes rose slightly. The Non-New York City region reported increases in both Index and property crimes, while violent crimes fell between 2007 and 2008. Crime counts for 2007 and 2008 are presented for each county in Appendix 3, and county crime rates for 2008 are provided in Appendix 4.

New York City



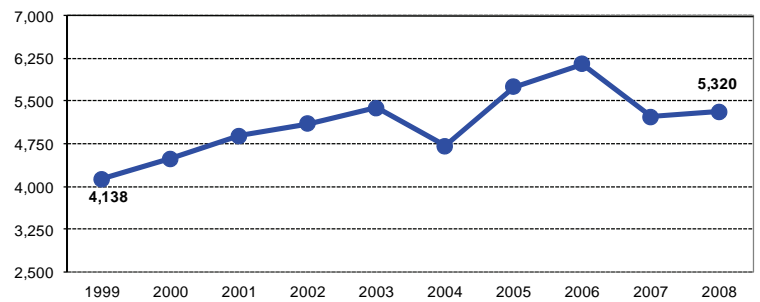
Non-New York City



Trends in Violent Crimes by Firearm: 1999 to 2008

The Uniform Crime Reporting system includes information provided by law enforcement regarding the number of violent crimes reported which involved the use of a firearm. Currently, these figures are only available from the Non-New York City region. Over the last 10 years, there has been a general increase in the use of firearms in violent crimes, with the highest count reported in 2006. In 2008, there were 5,320 reported violent crime incidents which involved a firearm, an increase of 2% over 2007, and 29% over 1999. Appendix 5 provides counts of firearm related crimes for each of the violent Index crimes.

Violent Crimes by Firearm: Non-New York City



Appendix 5 shows that during 2008, 179 of 310 murders reported outside of New York City involved a firearm (58%). The number of robberies which involved a firearm increased by 5%, from 2,688 in 2007 to 2,823 in 2008. There were 2,282 aggravated assaults which involved a firearm reported in 2008, a decrease of 3% over the 2,341 reported in 2007.

Appendix 1
New York State Index Crime Counts and Rates per 100,000 Population: 1999 - 2008

Counts	1999	2000	2001	2002	2003	2004	2005	2006	2007	2008	% change	
											2007-08	1999-08
Index Crime	603,033	585,173	557,485	538,847	519,025	500,488	489,335	477,806	461,152	463,307	0.5%	-23.2%
Violent Crime	106,828	104,487	98,708	94,591	89,351	84,275	85,518	83,811	79,838	77,371	-3.1%	-27.6%
Murder	915	954	971	904	924	899	874	927	808	835	3.3%	-8.7%
Forcible Rape	3,436	3,352	3,448	3,774	3,770	3,561	3,614	3,165	2,921	2,775	-5.0%	-19.2%
Robbery	45,068	41,609	37,717	36,945	35,777	33,350	35,002	34,377	31,051	31,748	2.2%	-29.6%
Agg. Assault	57,409	58,572	56,572	52,968	48,880	46,465	46,028	45,342	45,058	42,013	-6.8%	-26.8%
Property Crime	496,205	480,686	458,777	444,256	429,674	416,213	403,817	393,995	381,314	385,936	1.2%	-22.2%
Burglary	91,509	85,028	79,132	76,487	75,405	69,900	67,792	68,483	64,815	65,198	0.6%	-28.8%
Larceny	342,495	337,999	328,439	319,454	309,135	305,537	300,491	293,434	288,529	295,676	2.5%	-13.7%
MV Theft	62,201	57,659	51,206	48,315	45,134	40,776	35,534	32,078	27,970	25,062	-10.4%	-59.7%
Rates per 100,000 Pop.	1999	2000	2001	2002	2003	2004	2005	2006	2007	2008	% change	
											2007-08	1999-08
Index Crime	3,313.9	3,083.7	2,932.4	2,812.7	2,704.6	2,603.0	2,541.4	2,475.4	2,390.2	2,377.6	-0.5%	-28.3%
Violent Crime	587.1	550.6	519.2	493.8	465.6	438.3	444.1	434.2	413.8	397.1	-4.0%	-32.4%
Murder	5.0	5.0	5.1	4.7	4.8	4.7	4.5	4.8	4.2	4.3	2.3%	-14.8%
Forcible Rape	18.9	17.7	18.1	19.7	19.6	18.5	18.8	16.4	15.1	14.2	-5.9%	-24.6%
Robbery	247.7	219.3	198.4	192.8	186.4	173.5	181.8	178.1	160.9	162.9	1.2%	-34.2%
Agg. Assault	315.5	308.7	297.6	276.5	254.7	241.7	239.0	234.9	233.5	215.6	-7.7%	-31.7%
Property Crime	2,726.9	2,533.1	2,413.2	2,319.0	2,239.0	2,164.7	2,097.2	2,041.2	1,976.4	1,980.6	0.2%	-27.4%
Burglary	502.9	448.1	416.2	399.3	392.9	363.5	352.1	354.8	335.9	334.6	-0.4%	-33.5%
Larceny	1,882.2	1,781.1	1,727.6	1,667.5	1,610.9	1,589.1	1,560.6	1,520.2	1,495.5	1,517.4	1.5%	-19.4%
MV Theft	341.8	303.8	269.3	252.2	235.2	212.1	184.5	166.2	145.0	128.6	-11.3%	-62.4%

Source: DCJS, Uniform Crime/Incident-Based Reporting systems.
Includes all reports received as of 8/13/09.

Appendix 2
New York State Index Crime Summary by Region: 1999 - 2008

NEW YORK CITY	1999	2000	2001	2002	2003	2004	2005	2006	2007	2008	% change	
											2007-08	1999-08
Index Crime	299,909	287,995	264,225	250,631	236,215	226,876	217,132	205,522	199,941	198,419	-0.8%	-33.8%
Violent Crime	78,971	75,739	68,737	63,840	59,448	55,688	54,623	52,086	50,453	48,430	-4.0%	-38.7%
Murder	671	667	649	587	597	570	539	596	496	523	5.4%	-22.1%
Forcible Rape	1,702	1,643	1,533	1,689	1,609	1,428	1,412	1,071	875	890	1.7%	-47.7%
Robbery	36,108	32,601	28,206	27,229	25,989	24,373	24,722	23,511	21,787	22,186	1.8%	-38.6%
Agg. Assault	40,490	40,828	38,349	34,335	31,253	29,317	27,950	26,908	27,295	24,831	-9.0%	-38.7%
Property Crime	220,938	212,256	195,488	186,791	176,767	171,188	162,509	153,436	149,488	149,989	0.3%	-32.1%
Burglary	40,469	37,015	31,564	30,102	28,293	26,100	23,210	22,137	20,914	19,867	-5.0%	-50.9%
Larceny	140,771	139,353	133,928	129,655	124,846	124,016	120,918	115,363	115,318	117,682	2.0%	-16.4%
MV Theft	39,698	35,888	29,996	27,034	23,628	21,072	18,381	15,936	13,256	12,440	-6.2%	-68.7%
NON-NEW YORK CITY	1999	2000	2001	2002	2003	2004	2005	2006	2007	2008	% change	
											2007-08	1999-08
Index Crime	303,124	297,178	293,260	288,216	282,810	273,612	272,203	272,284	261,211	264,888	1.4%	-12.6%
Violent Crime	27,857	28,748	29,971	30,751	29,903	28,587	30,895	31,725	29,385	28,941	-1.5%	3.9%
Murder	244	287	322	317	327	329	335	331	312	312	0.0%	27.9%
Forcible Rape	1,734	1,709	1,915	2,085	2,161	2,133	2,202	2,094	2,046	1,885	-7.9%	8.7%
Robbery	8,960	9,008	9,511	9,716	9,788	8,977	10,280	10,866	9,264	9,562	3.2%	6.7%
Agg. Assault	16,919	17,744	18,223	18,633	17,627	17,148	18,078	18,434	17,763	17,182	-3.3%	1.6%
Property Crime	275,267	268,430	263,289	257,465	252,907	245,025	241,308	240,559	231,826	235,947	1.8%	-14.3%
Burglary	51,040	48,013	47,568	46,385	47,112	43,800	44,582	46,346	43,901	45,331	3.3%	-11.2%
Larceny	201,724	198,646	194,511	189,799	184,289	181,521	179,573	178,071	173,211	177,994	2.8%	-11.8%
MV Theft	22,503	21,771	21,210	21,281	21,506	19,704	17,153	16,142	14,714	12,622	-14.2%	-43.9%

Note: New York City data reported from 1999 to 2002 differs slightly from what the NYPD reports.

Source: DCJS, Uniform Crime/Incident-Based Reporting systems.
Includes all reports received as of 8/13/09.

Appendix 3
New York State Index Crime Summary by County
 2007 vs. 2008

County	Year	Total	Violent	Forcible			Agg.	Property	Burglary	Larceny	MV
				Murder	Rape	Robbery	Assault				Theft
Albany	2007	10,580	1,464	5	74	437	948	9,116	1,586	7,103	427
	2008	10,570	1,327	10	73	443	801	9,243	1,622	7,291	330
	% change	-0.1%	-9.4%	100.0%	-1.4%	1.4%	-15.5%	1.4%	2.3%	2.6%	-22.7%
Allegany	2007	710	86	1	10	2	73	624	195	413	16
	2008	651	91	0	10	4	77	560	174	368	18
	% change	-8.3%	5.8%	-100.0%	0.0%	100.0%	5.5%	-10.3%	-10.8%	-10.9%	12.5%
Broome	2007	6,004	457	4	64	108	281	5,547	748	4,680	119
	2008	6,683	543	2	74	128	339	6,140	942	5,074	124
	% change	11.3%	18.8%	-50.0%	15.6%	18.5%	20.6%	10.7%	25.9%	8.4%	4.2%
Cattaraugus	2007	2,114	149	2	14	24	109	1,965	440	1,465	60
	2008	1,920	215	2	24	20	169	1,705	380	1,273	52
	% change	-9.2%	44.3%	0.0%	71.4%	-16.7%	55.0%	-13.2%	-13.6%	-13.1%	-13.3%
Cayuga	2007	1,846	171	0	21	22	128	1,675	294	1,340	41
	2008	1,850	147	0	14	16	117	1,703	359	1,320	24
	% change	0.2%	-14.0%	NA	-33.3%	-27.3%	-8.6%	1.7%	22.1%	-1.5%	-41.5%
Chautauqua	2007	3,805	341	1	50	48	242	3,464	818	2,541	105
	2008	3,728	321	6	39	55	221	3,407	835	2,484	88
	% change	-2.0%	-5.9%	500.0%	-22.0%	14.6%	-8.7%	-1.6%	2.1%	-2.2%	-16.2%
Chemung	2007	2,606	224	3	14	37	170	2,382	406	1,906	70
	2008	2,336	204	4	18	37	145	2,132	441	1,652	39
	% change	-10.4%	-8.9%	33.3%	28.6%	0.0%	-14.7%	-10.5%	8.6%	-13.3%	-44.3%
Chenango	2007	970	47	3	18	1	25	923	212	687	24
	2008	930	41	2	18	3	18	889	182	688	19
	% change	-4.1%	-12.8%	-33.3%	0.0%	200.0%	-28.0%	-3.7%	-14.2%	0.1%	-20.8%
Clinton	2007	2,015	221	1	21	10	189	1,794	411	1,339	44
	2008	1,818	142	1	30	6	105	1,676	352	1,287	37
	% change	-9.8%	-35.7%	0.0%	42.9%	-40.0%	-44.4%	-6.6%	-14.4%	-3.9%	-15.9%
Columbia	2007	1,357	151	2	11	17	121	1,206	289	879	38
	2008	1,322	134	2	4	9	119	1,188	271	897	20
	% change	-2.6%	-11.3%	0.0%	-63.6%	-47.1%	-1.7%	-1.5%	-6.2%	2.0%	-47.4%
Cortland	2007	1,285	116	0	15	7	94	1,169	231	904	34
	2008	1,105	112	1	17	8	86	993	205	758	30
	% change	-14.0%	-3.4%	NA	13.3%	14.3%	-8.5%	-15.1%	-11.3%	-16.2%	-11.8%
Delaware	2007	846	91	1	13	3	74	755	284	452	19
	2008	737	74	0	5	7	62	663	215	433	15
	% change	-12.9%	-18.7%	-100.0%	-61.5%	133.3%	-16.2%	-12.2%	-24.3%	-4.2%	-21.1%

Appendix 3
New York State Index Crime Summary by County
 2007 vs. 2008

County	Year	Total	Violent	Murder	Forcible Rape	Robbery	Agg. Assault	Property	Burglary	Larceny	MV Theft
Dutchess	2007	6,389	892	14	42	252	584	5,497	904	4,330	263
	2008	6,492	885	5	45	244	591	5,607	990	4,406	211
	% change	1.6%	-0.8%	-64.3%	7.1%	-3.2%	1.2%	2.0%	9.5%	1.8%	-19.8%
Erie	2007	33,249	4,541	57	264	1,823	2,397	28,708	6,486	19,451	2,771
	2008	33,373	4,735	39	248	1,789	2,659	28,638	6,205	20,071	2,362
	% change	0.4%	4.3%	-31.6%	-6.1%	-1.9%	10.9%	-0.2%	-4.3%	3.2%	-14.8%
Essex	2007	540	80	0	11	1	68	460	122	317	21
	2008	467	51	0	6	1	44	416	104	306	6
	% change	-13.5%	-36.3%	NA	-45.5%	0.0%	-35.3%	-9.6%	-14.8%	-3.5%	-71.4%
Franklin	2007	997	148	1	16	4	127	849	288	529	32
	2008	993	95	0	21	3	71	898	243	641	14
	% change	-0.4%	-35.8%	-100.0%	31.3%	-25.0%	-44.1%	5.8%	-15.6%	21.2%	-56.3%
Fulton	2007	1,615	132	1	21	6	104	1,483	324	1,109	50
	2008	1,487	99	1	12	5	81	1,388	241	1,101	46
	% change	-7.9%	-25.0%	0.0%	-42.9%	-16.7%	-22.1%	-6.4%	-25.6%	-0.7%	-8.0%
Genesee	2007	1,441	87	0	10	11	66	1,354	248	1,061	45
	2008	1,442	113	2	18	14	79	1,329	255	1,031	43
	% change	0.1%	29.9%	NA	80.0%	27.3%	19.7%	-1.8%	2.8%	-2.8%	-4.4%
Greene	2007	1,139	176	1	18	6	151	963	243	687	33
	2008	1,421	102	1	2	5	94	1,319	262	1,016	41
	% change	24.8%	-42.0%	0.0%	-88.9%	-16.7%	-37.7%	37.0%	7.8%	47.9%	24.2%
Hamilton	2007	53	2	0	0	0	2	51	14	37	0
	2008	40	5	0	2	0	3	35	8	27	0
	% change	-24.5%	150.0%	NA	NA	NA	50.0%	-31.4%	-42.9%	-27.0%	NA
Herkimer	2007	1,190	176	1	9	9	157	1,014	261	737	16
	2008	1,218	196	0	11	14	171	1,022	214	789	19
	% change	2.4%	11.4%	-100.0%	22.2%	55.6%	8.9%	0.8%	-18.0%	7.1%	18.8%
Jefferson	2007	2,536	288	5	50	28	205	2,248	390	1,759	99
	2008	2,756	271	0	26	26	219	2,485	480	1,921	84
	% change	8.7%	-5.9%	-100.0%	-48.0%	-7.1%	6.8%	10.5%	23.1%	9.2%	-15.2%
Lewis	2007	409	65	0	39	0	26	344	113	219	12
	2008	384	35	0	5	1	29	349	126	210	13
	% change	-6.1%	-46.2%	NA	-87.2%	NA	11.5%	1.5%	11.5%	-4.1%	8.3%
Livingston	2007	1,561	61	0	14	4	43	1,500	187	1,286	27
	2008	1,067	70	0	14	4	52	997	163	819	15
	% change	-31.6%	14.8%	NA	0.0%	0.0%	20.9%	-33.5%	-12.8%	-36.3%	-44.4%

Appendix 3
New York State Index Crime Summary by County
 2007 vs. 2008

County	Year	Total	Violent	Forcible			Agg.	Property	Burglary	Larceny	MV
				Murder	Rape	Robbery	Assault				Theft
Madison	2007	1,396	69	2	12	8	47	1,327	310	987	30
	2008	1,332	59	0	15	4	40	1,273	278	974	21
	% change	-4.6%	-14.5%	-100.0%	25.0%	-50.0%	-14.9%	-4.1%	-10.3%	-1.3%	-30.0%
Monroe	2007	25,276	2,956	53	180	1,205	1,518	22,320	4,205	15,993	2,122
	2008	24,895	2,917	48	147	1,254	1,468	21,978	4,374	15,906	1,698
	% change	-1.5%	-1.3%	-9.4%	-18.3%	4.1%	-3.3%	-1.5%	4.0%	-0.5%	-20.0%
Montgomery	2007	724	118	1	6	5	106	606	127	456	23
	2008	785	134	1	1	5	127	651	148	488	15
	% change	8.4%	13.6%	0.0%	-83.3%	0.0%	19.8%	7.4%	16.5%	7.0%	-34.8%
Nassau	2007	19,958	2,328	24	95	1,056	1,153	17,630	2,395	13,649	1,586
	2008	20,895	2,281	28	74	1,126	1,053	18,614	2,620	14,548	1,446
	% change	4.7%	-2.0%	16.7%	-22.1%	6.6%	-8.7%	5.6%	9.4%	6.6%	-8.8%
Niagara	2007	6,945	759	4	70	203	482	6,186	1,447	4,369	370
	2008	7,144	760	5	37	212	506	6,384	1,671	4,416	297
	% change	2.9%	0.1%	25.0%	-47.1%	4.4%	5.0%	3.2%	15.5%	1.1%	-19.7%
Oneida	2007	6,915	702	10	38	171	483	6,213	1,478	4,466	269
	2008	6,553	658	8	47	211	392	5,895	1,305	4,383	207
	% change	-5.2%	-6.3%	-20.0%	23.7%	23.4%	-18.8%	-5.1%	-11.7%	-1.9%	-23.0%
Onondaga	2007	13,260	1,815	24	114	523	1,154	11,445	2,735	7,939	771
	2008	13,453	1,728	27	114	505	1,082	11,725	2,819	8,219	687
	% change	1.5%	-4.8%	12.5%	0.0%	-3.4%	-6.2%	2.4%	3.1%	3.5%	-10.9%
Ontario	2007	1,813	99	3	14	18	64	1,714	387	1,288	39
	2008	1,894	108	0	22	29	57	1,786	322	1,427	37
	% change	4.5%	9.1%	-100.0%	57.1%	61.1%	-10.9%	4.2%	-16.8%	10.8%	-5.1%
Orange	2007	8,767	1,042	9	77	322	634	7,725	1,298	6,087	340
	2008	9,157	1,039	13	69	330	627	8,118	1,291	6,501	326
	% change	4.4%	-0.3%	44.4%	-10.4%	2.5%	-1.1%	5.1%	-0.5%	6.8%	-4.1%
Orleans	2007	1,091	91	1	10	10	70	1,000	217	742	41
	2008	1,099	73	1	6	19	47	1,026	243	735	48
	% change	0.7%	-19.8%	0.0%	-40.0%	90.0%	-32.9%	2.6%	12.0%	-0.9%	17.1%
Oswego	2007	2,636	160	1	20	26	113	2,476	538	1,876	62
	2008	2,556	185	4	35	21	125	2,371	577	1,726	68
	% change	-3.0%	15.6%	300.0%	75.0%	-19.2%	10.6%	-4.2%	7.2%	-8.0%	9.7%
Otsego	2007	1,185	100	1	15	7	77	1,085	347	716	22
	2008	1,085	86	0	10	6	70	999	290	688	21
	% change	-8.4%	-14.0%	-100.0%	-33.3%	-14.3%	-9.1%	-7.9%	-16.4%	-3.9%	-4.5%

Appendix 3
New York State Index Crime Summary by County
 2007 vs. 2008

County	Year	Total	Violent	Murder	Forcible			Agg.	Property	Burglary	Larceny	MV
					Rape	Robbery	Assault	Theft				
Putnam	2007	962	71	3	10	10	48	891	149	709	33	
	2008	1,039	83	2	6	13	62	956	201	724	31	
	% change	8.0%	16.9%	-33.3%	-40.0%	30.0%	29.2%	7.3%	34.9%	2.1%	-6.1%	
Rensselaer	2007	4,539	495	3	38	153	301	4,044	938	2,873	233	
	2008	4,714	541	5	33	175	328	4,173	944	3,065	164	
	% change	3.9%	9.3%	66.7%	-13.2%	14.4%	9.0%	3.2%	0.6%	6.7%	-29.6%	
Rockland	2007	4,474	546	1	29	161	355	3,928	508	3,241	179	
	2008	5,016	538	2	32	150	354	4,478	561	3,779	138	
	% change	12.1%	-1.5%	100.0%	10.3%	-6.8%	-0.3%	14.0%	10.4%	16.6%	-22.9%	
St Lawrence	2007	2,279	194	1	22	6	165	2,085	382	1,660	43	
	2008	2,101	203	0	23	5	175	1,898	403	1,447	48	
	% change	-7.8%	4.6%	-100.0%	4.5%	-16.7%	6.1%	-9.0%	5.5%	-12.8%	11.6%	
Saratoga	2007	3,033	205	0	27	22	156	2,828	510	2,232	86	
	2008	3,112	157	0	23	20	114	2,955	503	2,370	82	
	% change	2.6%	-23.4%	NA	-14.8%	-9.1%	-26.9%	4.5%	-1.4%	6.2%	-4.7%	
Schenectady	2007	5,355	689	5	36	288	360	4,666	1,026	3,282	358	
	2008	5,634	740	9	43	311	377	4,894	1,124	3,482	288	
	% change	5.2%	7.4%	80.0%	19.4%	8.0%	4.7%	4.9%	9.6%	6.1%	-19.6%	
Schoharie	2007	567	33	0	4	1	28	534	152	370	12	
	2008	605	22	0	4	2	16	583	151	420	12	
	% change	6.7%	-33.3%	NA	0.0%	100.0%	-42.9%	9.2%	-0.7%	13.5%	0.0%	
Schuyler	2007	167	19	0	2	1	16	148	31	113	4	
	2008	207	15	0	3	1	11	192	35	153	4	
	% change	24.0%	-21.1%	NA	50.0%	0.0%	-31.3%	29.7%	12.9%	35.4%	0.0%	
Seneca	2007	565	46	0	6	1	39	519	74	438	7	
	2008	656	45	0	9	4	32	611	98	489	24	
	% change	16.1%	-2.2%	NA	50.0%	300.0%	-17.9%	17.7%	32.4%	11.6%	242.9%	
Steuben	2007	1,551	160	2	36	16	106	1,391	263	1,096	32	
	2008	1,495	161	0	33	7	121	1,334	276	1,026	32	
	% change	-3.6%	0.6%	-100.0%	-8.3%	-56.3%	14.2%	-4.1%	4.9%	-6.4%	0.0%	
Suffolk	2007	31,311	2,645	30	109	950	1,556	28,666	4,063	22,343	2,260	
	2008	33,071	2,557	39	111	967	1,440	30,514	4,613	23,811	2,090	
	% change	5.6%	-3.3%	30.0%	1.8%	1.8%	-7.5%	6.4%	13.5%	6.6%	-7.5%	
Sullivan	2007	2,064	267	0	19	45	203	1,797	491	1,205	101	
	2008	1,801	195	3	27	27	138	1,606	503	1,045	58	
	% change	-12.7%	-27.0%	NA	42.1%	-40.0%	-32.0%	-10.6%	2.4%	-13.3%	-42.6%	

New York State Index Crime Summary by County
2007 vs. 2008

County	Year	Total	Violent	Forcible			Agg.	Property	Burglary	Larceny	MV
				Murder	Rape	Robbery	Assault				Theft
Tioga	2007	533	35	0	4	2	29	498	118	355	25
	2008	580	36	0	9	1	26	544	123	402	19
	% change	8.8%	2.9%	NA	125.0%	-50.0%	-10.3%	9.2%	4.2%	13.2%	-24.0%
Tompkins	2007	2,452	116	0	18	29	69	2,336	345	1,938	53
	2008	2,464	137	2	14	35	86	2,327	426	1,846	55
	% change	0.5%	18.1%	NA	-22.2%	20.7%	24.6%	-0.4%	23.5%	-4.7%	3.8%
Ulster	2007	3,473	455	3	41	66	345	3,018	630	2,259	129
	2008	3,666	459	6	51	71	331	3,207	822	2,288	97
	% change	5.6%	0.9%	100.0%	24.4%	7.6%	-4.1%	6.3%	30.5%	1.3%	-24.8%
Warren	2007	1,629	109	2	18	9	80	1,520	217	1,271	32
	2008	1,613	111	0	20	9	82	1,502	165	1,320	17
	% change	-1.0%	1.8%	-100.0%	11.1%	0.0%	2.5%	-1.2%	-24.0%	3.9%	-46.9%
Washington	2007	1,002	127	3	24	3	97	875	160	678	37
	2008	905	117	2	20	4	91	788	186	578	24
	% change	-9.7%	-7.9%	-33.3%	-16.7%	33.3%	-6.2%	-9.9%	16.3%	-14.7%	-35.1%
Wayne	2007	1,783	162	1	30	14	117	1,621	319	1,252	50
	2008	2,002	184	1	27	29	127	1,818	392	1,379	47
	% change	12.3%	13.6%	0.0%	-10.0%	107.1%	8.5%	12.2%	22.9%	10.1%	-6.0%
Westchester	2007	16,705	2,467	22	90	1,033	1,322	14,238	2,334	10,935	969
	2008	16,558	2,398	27	75	1,084	1,212	14,160	2,363	10,956	841
	% change	-0.9%	-2.8%	22.7%	-16.7%	4.9%	-8.3%	-0.5%	1.2%	0.2%	-13.2%
Wyoming	2007	641	54	0	11	2	41	587	123	444	20
	2008	546	52	0	4	6	42	494	110	371	13
	% change	-14.8%	-3.7%	NA	-63.6%	200.0%	2.4%	-15.8%	-10.6%	-16.4%	-35.0%
Yates	2007	337	13	0	2	1	10	324	69	249	6
	2008	284	15	0	3	3	9	269	72	194	3
	% change	-15.7%	15.4%	NA	50.0%	200.0%	-10.0%	-17.0%	4.3%	-22.1%	-50.0%

*Counts are not available for individual counties in New York City.

Source: DCJS, Uniform Crime/Incident-Based Reporting systems (as of 8/13/09).

Appendix 4
New York State Index Crime Summary by County: 2008
Rates per 100,000 Population

County	Crime Rate			County	Crime Rate		
	Index	Violent	Property		Index	Violent	Property
Albany	3,525.8	442.6	3,083.2	Ontario	1,814.5	103.5	1,711.1
Allegany	1,312.7	183.5	1,129.2	Orange	2,399.9	272.3	2,127.6
Broome	3,420.6	277.9	3,142.6	Orleans	2,608.1	173.2	2,434.9
Cattaraugus	2,468.7	276.4	2,192.2	Oswego	2,107.4	152.5	1,954.9
Cayuga	2,317.9	184.2	2,133.8	Otsego	1,736.9	137.7	1,599.2
Chautauqua	2,798.4	241.0	2,557.5	Putnam	1,040.1	83.1	957.0
Chemung	2,666.1	232.8	2,433.3	Rensselaer	3,029.2	347.6	2,681.5
Chenango	1,817.5	80.1	1,737.3	Rockland	1,682.5	180.5	1,502.0
Clinton	2,204.3	172.2	2,032.1	St. Lawrence	1,918.2	185.3	1,732.9
Columbia	2,123.5	215.2	1,908.2	Saratoga	1,429.8	72.1	1,357.6
Cortland	2,286.5	231.7	2,054.7	Schenectady	3,723.1	489.0	3,234.1
Delaware	1,628.2	163.5	1,464.7	Schoharie	1,884.0	68.5	1,815.5
Dutchess	2,206.8	300.8	1,906.0	Schuyler	1,090.1	79.0	1,011.1
Erie	3,672.8	521.1	3,151.7	Seneca	1,910.8	131.1	1,779.7
Essex	1,269.4	138.6	1,130.7	Steuben	1,547.5	166.7	1,380.8
Franklin	1,972.1	188.7	1,783.4	Suffolk	2,171.8	167.9	2,003.9
Fulton	2,703.0	180.0	2,523.1	Sullivan	2,352.1	254.7	2,097.4
Genesee	2,498.2	195.8	2,302.5	Tioga	1,153.5	71.6	1,081.9
Greene	2,879.0	206.7	2,672.3	Tompkins	2,425.4	134.9	2,290.6
Hamilton	794.3	99.3	695.0	Ulster	2,010.9	251.8	1,759.1
Herkimer	1,954.6	314.5	1,640.1	Warren	2,426.4	167.0	2,259.4
Jefferson	2,337.7	229.9	2,107.8	Washington	1,437.8	185.9	1,251.9
Lewis	1,454.4	132.6	1,321.8	Wayne	2,201.0	202.3	1,998.7
Livingston	1,692.9	111.1	1,581.8	Westchester	1,735.2	251.3	1,483.9
Madison	1,906.7	84.5	1,822.2	Wyoming	1,308.0	124.6	1,183.5
Monroe	3,416.4	400.3	3,016.1	Yates	1,157.2	61.1	1,096.1
Montgomery	1,616.6	275.9	1,340.6				
Nassau	1,542.3	168.4	1,373.9	New York City	2,377.7	580.3	1,797.3
Niagara	3,335.3	354.8	2,980.5	Non-New York City	2,377.6	259.8	2,117.8
Oneida	2,826.2	283.8	2,542.4	New York State	2,377.6	397.1	1,980.6
Onondaga	2,967.7	381.2	2,586.5				

Source: DCJS, Uniform Crime/Incident-Based Reporting systems.
 Includes all reports received as of 8/13/09. Rates are not available for individual counties in New York City.

Appendix 5
Violent Crimes and Firearms
Non-New York City Region

	1999	2000	2001	2002	2003	2004	2005	2006	2007	2008	07 vs. 08 % Change	99 vs. 08 % Change
Violent Crimes	27,858	28,745	29,964	30,744	29,906	28,577	30,895	31,725	29,385	28,939	-1.5%	3.9%
Firearm Related	4,138	4,503	4,894	5,109	5,389	4,726	5,758	6,163	5,235	5,320	1.6%	28.6%
Percent Firearm	14.9%	15.7%	16.3%	16.6%	18.0%	16.5%	18.6%	19.4%	17.8%	18.4%	3.2%	23.8%
Murder	245	284	315	310	330	319	335	331	312	310	-0.6%	26.5%
Firearm Related	112	141	171	178	190	156	168	186	175	179	2.3%	59.8%
Percent Firearm	45.7%	49.6%	54.3%	57.4%	57.6%	48.9%	50.1%	56.2%	56.1%	57.7%	2.9%	26.3%
Forcible Rape	1,734	1,709	1,915	2,085	2,161	2,133	2,202	2,094	2,046	1,885	-7.9%	8.7%
Firearm Related	60	58	65	45	47	55	52	35	31	36	16.1%	-40.0%
Percent Firearm	3.5%	3.4%	3.4%	2.2%	2.2%	2.6%	2.4%	1.7%	1.5%	1.9%	26.0%	-44.8%
Robbery	8,960	9,008	9,511	9,716	9,788	8,977	10,280	10,866	9,264	9,562	3.2%	6.7%
Firearm Related	2,574	2,607	2,819	2,873	3,036	2,607	3,251	3,412	2,688	2,823	5.0%	9.7%
Percent Firearm	28.7%	28.9%	29.6%	29.6%	31.0%	29.0%	31.6%	31.4%	29.0%	29.5%	1.7%	2.8%
Aggravated Assault	16,919	17,744	18,223	18,633	17,627	17,148	18,078	18,434	17,763	17,182	-3.3%	1.6%
Firearm Related	1,392	1,697	1,839	2,013	2,116	1,908	2,287	2,530	2,341	2,282	-2.5%	63.9%
Percent Firearm	8.2%	9.6%	10.1%	10.8%	12.0%	11.1%	12.7%	13.7%	13.2%	13.3%	0.8%	61.4%

Source: DCJS, Uniform Crime/Incident-Based Reporting systems.
Includes all reports received as of 8/13/09.