

Division of Criminal Justice Services

New York State Crime Report



Andrew M. Cuomo
Governor

Michael C. Green
Executive Deputy Commissioner

www.criminaljustice.ny.gov

April 2014

Crime in New York State

2013 Preliminary Data

This report and the attached appendices provide the most recent information available on the number of Index crimes and rates per 100,000 population for each county in New York State. County population data are provided every year by the FBI based on U.S. Census estimates and are used to calculate crime rates. Crime counts are based on official crime reports submitted to DCJS through the Uniform Crime Reporting (UCR) and Incident Based Reporting (IBR) programs. Index crimes include the *violent* crimes of murder, forcible rape, robbery and aggravated assault, and the *property* crimes of burglary, larceny and motor vehicle theft. Because of their seriousness and frequency, these crimes are used by DCJS and the FBI as indicators of overall crime trends.

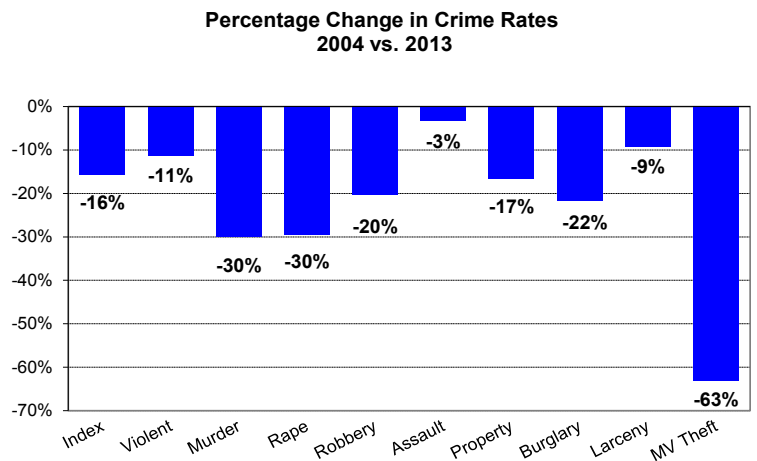
The summary includes information on crimes reported in New York State for the last 10 years. These figures include all reports received by DCJS as of April 8, 2014. They differ slightly from those published by the FBI; the FBI reports include estimations for agencies with incomplete reporting, and exclude data submitted after FBI deadlines.

Detailed information on crime data for each reporting agency from 2009 through 2013 is available on the DCJS website:
www.criminaljustice.ny.gov/crimnet/ojsa/stats.htm

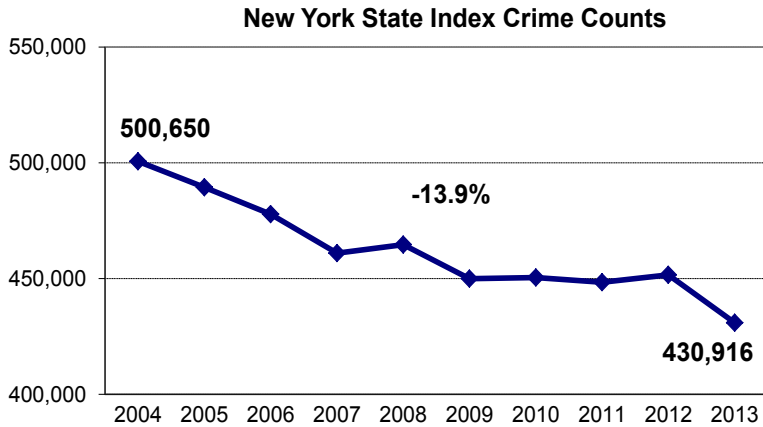
New York State has experienced significant declines in both the crime *rate*—or the number of Index crimes per capita—and the crime *volume*—the total number of Index crimes reported over the past decade.

Change in Crime Rates: 2004 vs. 2013

Over the past 10 years, the overall rate of Index crimes per 100,000 residents declined 16%. The rate of violent crimes (murder, rape, robbery and aggravated assault) fell 11% and property crimes (burglary, larceny and motor vehicle theft) were down 17%. The largest reductions in crime rates were reported for motor vehicle theft, murder and forcible rape (see Appendix 1 for a statewide, annualized comparison of crime rates).

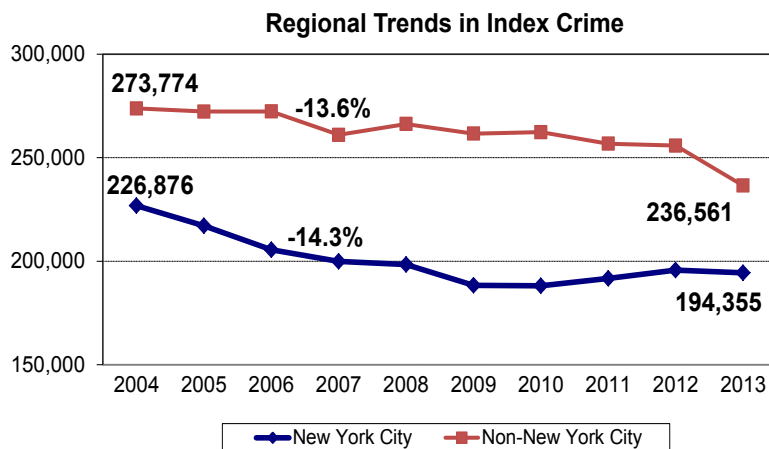


Change in Crime Volume: 2004 vs. 2013



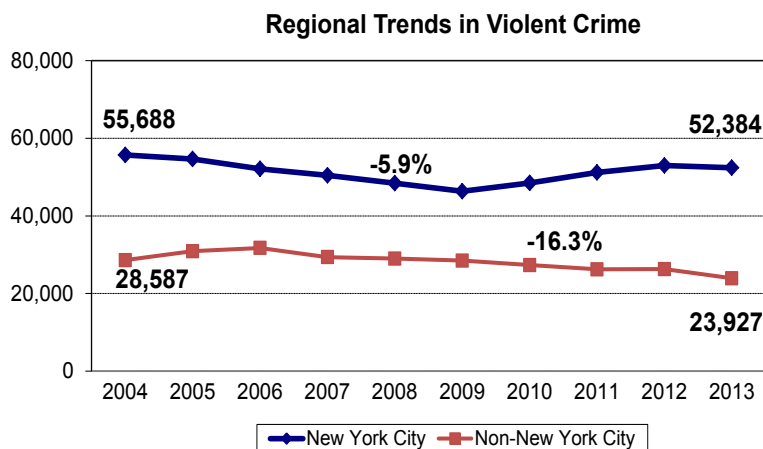
While New York State’s crime rate has decreased over the past 10 years, New York has also reported a significant reduction in the actual number of crimes reported. The number of Index crimes reached the lowest levels ever recorded statewide in 2013, when there were 69,734 fewer crimes reported than in 2004. The state’s population increased by approximately 270,000 residents during the same time period.

Trends in Regional Crime: 2004 to 2013



Counties in the state’s two regions—New York City (five counties) and non-New York City (57 counties)—experienced similar declines in Index crime over the last 10 years.

The number of Index crimes reported in New York City fell 14.3% between 2004 and 2013, while the rate of decline was 13.6% in the rest of the state. The counties outside of New York City accounted for 55% of the reported crime statewide, and almost 60% of the property crime reported in 2013.



The decline in violent crime over the last 10 years was nearly three times greater outside New York City (-16.3%) than in New York City (-5.9%).

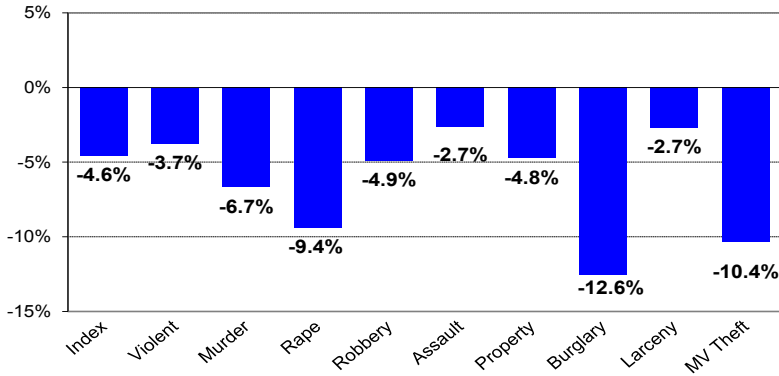
Counties outside New York City have reported a steady decline in violent crime since 2006. New York City reported increases in violent crime between 2009 and 2012 but reported a decline in 2013. New York City now accounts for 69% of the violent crime reported in New York State (See Appendix 2).

Statewide Crime Trends: 2012 vs. 2013

The preliminary 2013 crime data show that crime volume in New York State decreased between 2012 and 2013.

**Percentage Change in Crime Volume
2012 vs. 2013**

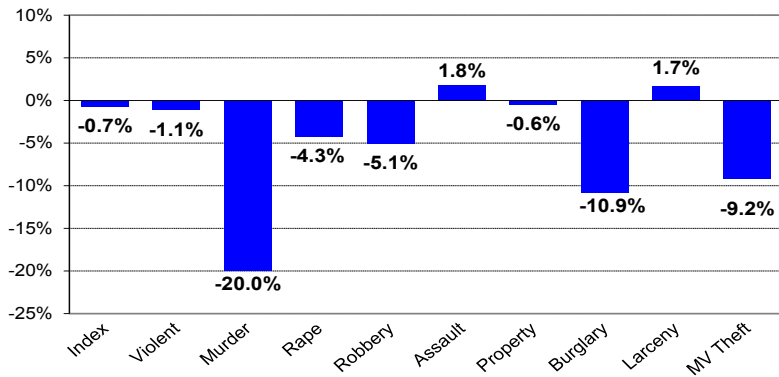
NEW YORK STATE



In 2013, New York State reported a decline in all seven Index crime categories as compared to 2012.

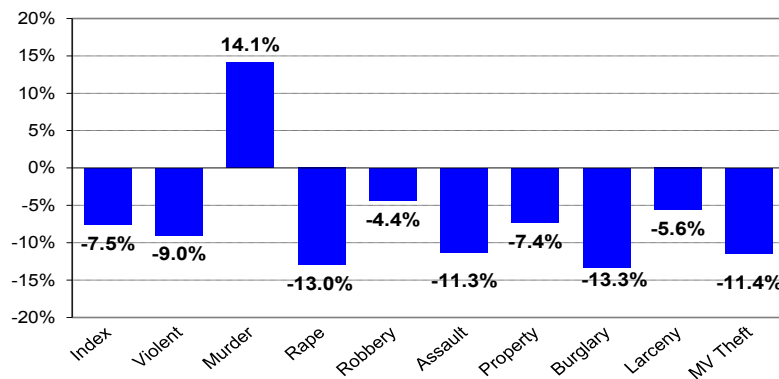
Violent crime declined 3.7% while property crime declined 4.8%. The largest declines were reported in burglary (-12.6%) and motor vehicle theft (-10.4%).

NEW YORK CITY



The total number of Index crimes in New York City remained mostly unchanged between 2012 and 2013. There were slight increases in aggravated assault (+1.8%) and larceny (+1.7%) during the period. In the violent crime category, murders dropped significantly (-20%) while there were large decreases in two property crime categories: burglary (-10.9%) and motor vehicle theft (-9.2%).

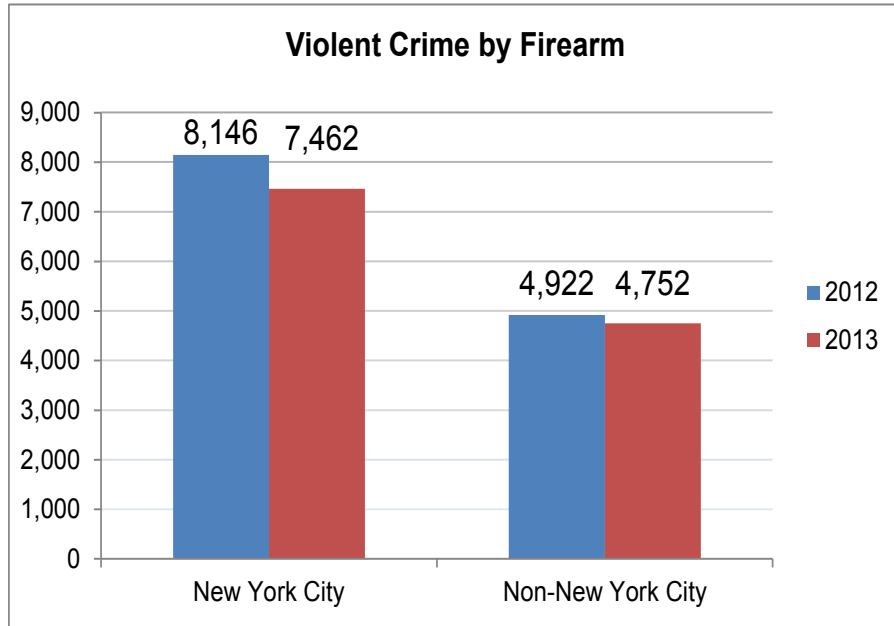
NON-NEW YORK CITY



Reported crime outside of New York City decreased by 7.5% between 2012 and 2013. Decreases were reported in all crime categories except for murder, which increased by 14.1% during the period. Crime counts for 2012 and 2013 are presented for each county in Appendix 3; county crime rates for 2013 are detailed in Appendix 4.

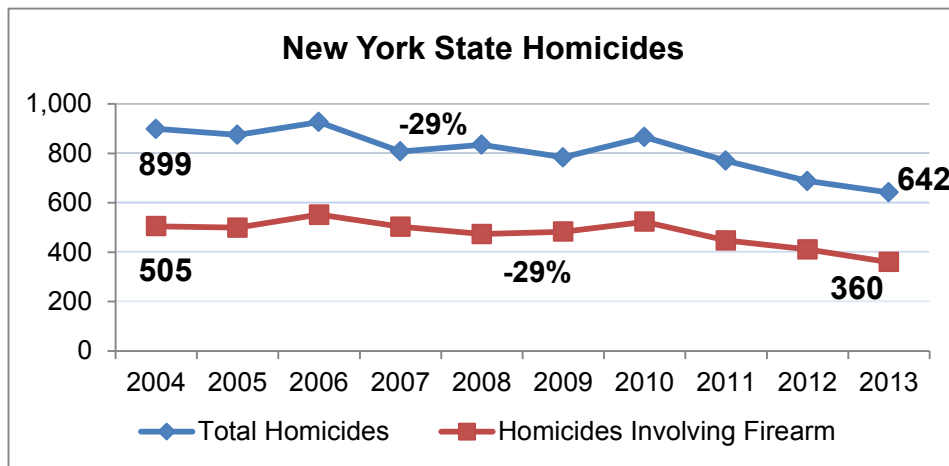
Trends in Violent Crimes by Firearm

The Division of Criminal Justice Services (DCJS) collects data from law enforcement regarding the number of reported violent crimes that involved the use of a firearm. Between 2012 and 2013, violent crime involving firearms decreased in New York City by 8.4% with 684 fewer crimes reported. During the same time period, violent crimes by firearm outside New York City decreased slightly, by approximately 3.5% with 170 fewer crimes reported (See Appendix 5).



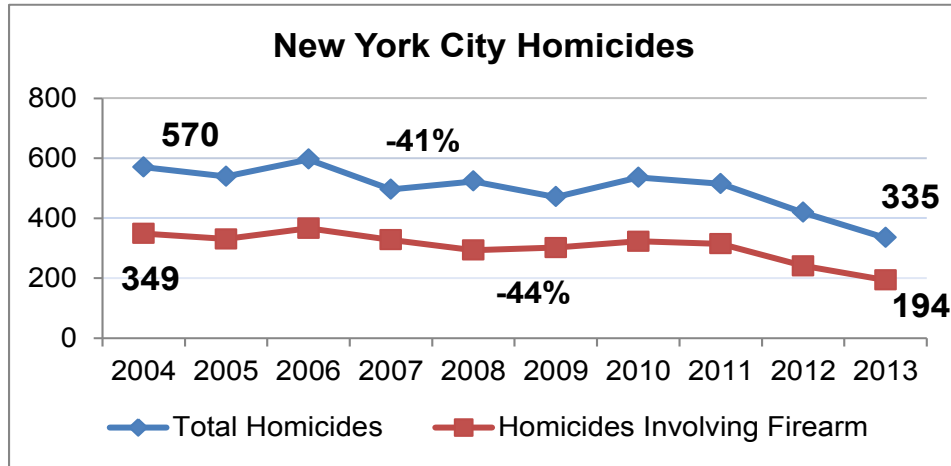
Regional Trends in Homicide

The total number of homicides has declined 29% when comparing 2004 to 2013. In the past four years, the decline has been more significant: homicides are down 26%. Since 2010, the number of reported homicides has declined every year. Homicides by firearm also decreased by 29% over the past 10 years and by 31% since 2010. This is driven primarily by homicide decreases in New York City (See Appendix 6).

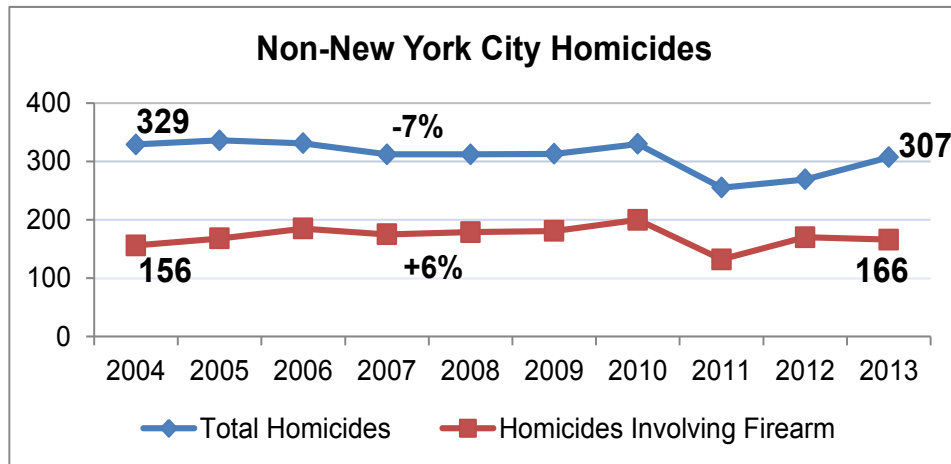


Regional Trends in Homicide (Continued)

Since 2004, the total number of homicides in New York City has decreased by 41%. In 2013, the percentage of homicides by firearm in the region was 58%, which was relatively consistent when compared to prior years over the past decade. Since 2010, the number of total homicides and homicides by firearm have declined sharply: 38% and 40% respectively.



There was little change in the total number of homicides outside of New York City between 2004 and 2010. A sharp decline occurred between 2010 and 2011, followed by a two-year increase. The percentage of homicides involving firearms has been relatively consistent, between 50% and 60%, during the 10-year period.



Appendix 1
New York State Index Crime Counts and Rates per 100,000 Population: 2004 - 2013

Counts	2004	2005	2006	2007	2008	2009	2010	2011	2012	2013	% change		
											2012-13	2004-13	
Index Crime	500,650	489,400	477,866	460,992	464,686	449,969	450,416	448,430	451,577	430,916		-4.6%	-13.9%
Violent Crime	84,275	85,525	83,816	79,819	77,437	74,833	75,833	77,443	79,281	76,311		-3.7%	-9.5%
Murder	899	875	927	808	835	784	866	770	688	642		-6.7%	-28.6%
Forcible Rape	3,561	3,615	3,165	2,925	2,787	2,567	2,765	2,767	2,826	2,560		-9.4%	-28.1%
Robbery	33,350	35,004	34,381	31,036	31,743	28,064	28,406	28,347	28,549	27,150		-4.9%	-18.6%
Agg. Assault	46,465	46,031	45,343	45,050	42,072	43,418	43,796	45,559	47,218	45,959		-2.7%	-1.1%
Property Crime	416,375	403,875	394,050	381,173	387,249	375,136	374,583	370,987	372,296	354,605		-4.8%	-14.8%
Burglary	69,929	67,802	68,487	64,833	65,515	62,678	64,691	64,991	63,943	55,894		-12.6%	-20.1%
Larceny	305,667	300,537	293,475	288,367	296,639	290,679	289,485	287,345	291,191	283,330		-2.7%	-7.3%
MV Theft	40,779	35,536	32,088	27,973	25,095	21,779	20,407	18,651	17,162	15,381		-10.4%	-62.3%
Rates per 100,000 Pop.	2004	2005	2006	2007	2008	2009	2010	2011	2012	2013	% change		
											2012-13	2004-13	
Index Crime	2,603.9	2,541.7	2,475.7	2,389.4	2,384.7	2,303.1	2,324.8	2,304.3	2,308.0	2,193.3		-5.0%	-15.8%
Violent Crime	438.3	444.2	434.2	413.7	397.4	383.0	391.4	397.9	405.2	388.4		-4.1%	-11.4%
Murder	4.7	4.5	4.8	4.2	4.3	4.0	4.5	4.0	3.5	3.3		-7.1%	-30.1%
Forcible Rape	18.5	18.8	16.4	15.2	14.3	13.1	14.3	14.2	14.4	13.0		-9.8%	-29.6%
Robbery	173.5	181.8	178.1	160.9	162.9	143.6	146.6	145.7	145.9	138.2		-5.3%	-20.3%
Agg. Assault	241.7	239.1	234.9	233.5	215.9	222.2	226.1	234.1	241.3	233.9		-3.1%	-3.2%
Property Crime	2,165.6	2,097.5	2,041.5	1,975.6	1,987.3	1,920.1	1,933.4	1,906.3	1,902.8	1,804.9		-5.1%	-16.7%
Burglary	363.7	352.1	354.8	336.0	336.2	320.8	333.9	334.0	326.8	284.5		-12.9%	-21.8%
Larceny	1,589.8	1,560.9	1,520.4	1,494.6	1,522.3	1,487.8	1,494.2	1,476.5	1,488.3	1,442.1		-3.1%	-9.3%
MV Theft	212.1	184.6	166.2	145.0	128.8	111.5	105.3	95.8	87.7	78.3		-10.7%	-63.1%

Source: DCJS, Uniform Crime/Incident-Based Reporting system.
Includes all reports received as of 4/8/2014.

Appendix 2
New York State Index Crime Summary by Region: 2004 - 2013

NEW YORK CITY	2004	2005	2006	2007	2008	2009	2010	2011	2012	2013	% change		
											2012-13	2004-13	
Index Crime	226,876	217,132	205,522	199,941	198,419	188,357	188,104	191,666	195,753	194,355		-0.7%	-14.3%
Violent Crime	55,688	54,623	52,086	50,453	48,430	46,357	48,489	51,209	52,993	52,384		-1.1%	-5.9%
Murder	570	539	596	496	523	471	536	515	419	335		-20.0%	-41.2%
Forcible Rape	1,428	1,412	1,071	875	890	832	1,036	1,092	1,162	1,112		-4.3%	-22.1%
Robbery	24,373	24,722	23,511	21,787	22,186	18,597	19,608	19,773	20,201	19,170		-5.1%	-21.3%
Agg. Assault	29,317	27,950	26,908	27,295	24,831	26,457	27,309	29,829	31,211	31,767		1.8%	8.4%
Property Crime	171,188	162,509	153,436	149,488	149,989	142,000	139,615	140,457	142,760	141,971		-0.6%	-17.1%
Burglary	26,100	23,210	22,137	20,914	19,867	18,780	17,926	18,159	18,635	16,606		-10.9%	-36.4%
Larceny	124,016	120,918	115,363	115,318	117,682	112,526	111,370	112,864	115,935	117,931		1.7%	-4.9%
MV Theft	21,072	18,381	15,936	13,256	12,440	10,694	10,319	9,434	8,190	7,434		-9.2%	-64.7%
NON-NEW YORK CITY	2004	2005	2006	2007	2008	2009	2010	2011	2012	2013	% change		
											2012-13	2004-13	
Index Crime	273,774	272,268	272,344	261,051	266,267	261,612	262,312	256,764	255,824	236,561		-7.5%	-13.6%
Violent Crime	28,587	30,902	31,730	29,366	29,007	28,476	27,344	26,234	26,288	23,927		-9.0%	-16.3%
Murder	329	336	331	312	312	313	330	255	269	307		14.1%	-6.7%
Forcible Rape	2,133	2,203	2,094	2,050	1,897	1,735	1,729	1,675	1,664	1,448		-13.0%	-32.1%
Robbery	8,977	10,282	10,870	9,249	9,557	9,467	8,798	8,574	8,348	7,980		-4.4%	-11.1%
Agg. Assault	17,148	18,081	18,435	17,755	17,241	16,961	16,487	15,730	16,007	14,192		-11.3%	-17.2%
Property Crime	245,187	241,366	240,614	231,685	237,260	233,136	234,968	230,530	229,536	212,634		-7.4%	-13.3%
Burglary	43,829	44,592	46,350	43,919	45,648	43,898	46,765	46,832	45,308	39,288		-13.3%	-10.4%
Larceny	181,651	179,619	178,112	173,049	178,957	178,153	178,115	174,481	175,256	165,399		-5.6%	-8.9%
MV Theft	19,707	17,155	16,152	14,717	12,655	11,085	10,088	9,217	8,972	7,947		-11.4%	-59.7%

Source: DCJS, Uniform Crime/Incident-Based Reporting system.
Includes all reports received as of 4/8/2014.

Appendix 3
New York State Index Crime Summary by County
2012 vs. 2013

County	Year	Total	Violent	Forcible			Agg.	Property	Burglary	Larceny	MV
				Murder	Rape	Robbery	Assault				Theft
Albany	2012	9,967	1,012	6	67	314	625	8,955	1,500	7,193	262
	2013	9,335	992	8	43	291	650	8,343	1,203	6,890	250
	% change	-6.3%	-2.0%	33.3%	-35.8%	-7.3%	4.0%	-6.8%	-19.8%	-4.2%	-4.6%
Allegany	2012	856	65	2	9	2	52	791	211	561	19
	2013	795	54	0	9	4	41	741	194	533	14
	% change	-7.1%	-16.9%	-100.0%	0.0%	100.0%	-21.2%	-6.3%	-8.1%	-5.0%	-26.3%
Broome	2012	6,893	601	7	59	133	402	6,292	1,252	4,899	141
	2013	6,703	511	7	51	154	299	6,192	1,165	4,897	130
	% change	-2.8%	-15.0%	0.0%	-13.6%	15.8%	-25.6%	-1.6%	-6.9%	0.0%	-7.8%
Cattaraugus	2012	2,078	149	1	20	17	111	1,929	431	1,462	36
	2013	1,756	114	0	13	11	90	1,642	308	1,272	62
	% change	-15.5%	-23.5%	-100.0%	-35.0%	-35.3%	-18.9%	-14.9%	-28.5%	-13.0%	72.2%
Cayuga	2012	1,807	141	1	13	21	106	1,666	305	1,315	46
	2013	1,514	127	2	25	23	77	1,387	270	1,107	10
	% change	-16.2%	-9.9%	100.0%	92.3%	9.5%	-27.4%	-16.7%	-11.5%	-15.8%	-78.3%
Chautauqua	2012	3,844	307	2	29	60	216	3,537	818	2,633	86
	2013	3,628	273	2	29	65	177	3,355	774	2,537	44
	% change	-5.6%	-11.1%	0.0%	0.0%	8.3%	-18.1%	-5.1%	-5.4%	-3.6%	-48.8%
Chemung	2012	2,434	222	4	2	46	170	2,212	398	1,768	46
	2013	2,201	151	0	7	37	107	2,050	351	1,672	27
	% change	-9.6%	-32.0%	-100.0%	250.0%	-19.6%	-37.1%	-7.3%	-11.8%	-5.4%	-41.3%
Chenango	2012	1,024	58	0	17	10	31	966	184	757	25
	2013	926	48	2	13	4	29	878	164	702	12
	% change	-9.6%	-17.2%	NA	-23.5%	-60.0%	-6.5%	-9.1%	-10.9%	-7.3%	-52.0%
Clinton	2012	1,684	90	0	15	7	68	1,594	274	1,282	38
	2013	1,660	107	3	19	9	76	1,553	261	1,253	39
	% change	-1.4%	18.9%	NA	26.7%	28.6%	11.8%	-2.6%	-4.7%	-2.3%	2.6%
Columbia	2012	1,429	103	0	16	16	71	1,326	263	1,051	12
	2013	1,116	76	0	8	17	51	1,040	207	819	14
	% change	-21.9%	-26.2%	NA	-50.0%	6.3%	-28.2%	-21.6%	-21.3%	-22.1%	16.7%
Cortland	2012	1,105	64	1	11	19	33	1,041	249	772	20
	2013	1,061	51	0	12	9	30	1,010	210	788	12
	% change	-4.0%	-20.3%	-100.0%	9.1%	-52.6%	-9.1%	-3.0%	-15.7%	2.1%	-40.0%
Delaware	2012	763	63	1	11	7	44	700	175	507	18
	2013	803	54	2	7	5	40	749	173	560	16
	% change	5.2%	-14.3%	100.0%	-36.4%	-28.6%	-9.1%	7.0%	-1.1%	10.5%	-11.1%

Appendix 3
New York State Index Crime Summary by County
 2012 vs. 2013

County	Year	Total	Violent	Forcible			Agg.	Property	Burglary	Larceny	MV
				Murder	Rape	Robbery	Assault				Theft
Dutchess	2012	5,888	677	5	30	162	480	5,211	897	4,168	146
	2013	4,977	573	12	28	146	387	4,404	753	3,573	78
	% change	-15.5%	-15.4%	140.0%	-6.7%	-9.9%	-19.4%	-15.5%	-16.1%	-14.3%	-46.6%
Erie	2012	31,468	4,227	50	211	1,604	2,362	27,241	6,026	19,734	1,481
	2013	29,306	4,088	55	204	1,504	2,325	25,218	5,222	18,740	1,256
	% change	-6.9%	-3.3%	10.0%	-3.3%	-6.2%	-1.6%	-7.4%	-13.3%	-5.0%	-15.2%
Essex	2012	517	43	1	7	3	32	474	130	331	13
	2013	449	43	0	8	2	33	406	121	266	19
	% change	-13.2%	0.0%	-100.0%	14.3%	-33.3%	3.1%	-14.3%	-6.9%	-19.6%	46.2%
Franklin	2012	1,040	57	1	15	6	35	983	212	745	26
	2013	872	61	1	10	3	47	811	179	605	27
	% change	-16.2%	7.0%	0.0%	-33.3%	-50.0%	34.3%	-17.5%	-15.6%	-18.8%	3.8%
Fulton	2012	1,559	52	0	5	12	35	1,507	301	1,162	44
	2013	1,527	62	1	13	11	37	1,465	262	1,164	39
	% change	-2.1%	19.2%	NA	160.0%	-8.3%	5.7%	-2.8%	-13.0%	0.2%	-11.4%
Genesee	2012	1,451	92	0	12	8	72	1,359	266	1,061	32
	2013	1,448	104	0	19	22	63	1,344	291	1,045	8
	% change	-0.2%	13.0%	NA	58.3%	175.0%	-12.5%	-1.1%	9.4%	-1.5%	-75.0%
Greene	2012	721	88	0	7	6	75	633	194	419	20
	2013	677	57	1	8	6	42	620	207	387	26
	% change	-6.1%	-35.2%	NA	14.3%	0.0%	-44.0%	-2.1%	6.7%	-7.6%	30.0%
Hamilton	2012	78	1	0	0	0	1	77	30	43	4
	2013	62	4	0	0	0	4	58	21	37	0
	% change	-20.5%	300.0%	NA	NA	NA	300.0%	-24.7%	-30.0%	-14.0%	-100.0%
Herkimer	2012	1,308	124	2	9	3	110	1,184	271	883	30
	2013	1,192	126	4	15	7	100	1,066	246	804	16
	% change	-8.9%	1.6%	100.0%	66.7%	133.3%	-9.1%	-10.0%	-9.2%	-8.9%	-46.7%
Jefferson	2012	2,914	213	1	15	25	172	2,701	460	2,087	154
	2013	2,386	137	0	14	16	107	2,249	337	1,832	80
	% change	-18.1%	-35.7%	-100.0%	-6.7%	-36.0%	-37.8%	-16.7%	-26.7%	-12.2%	-48.1%
Lewis	2012	420	19	0	0	2	17	401	126	264	11
	2013	330	24	1	1	0	22	306	95	197	14
	% change	-21.4%	26.3%	NA	NA	-100.0%	29.4%	-23.7%	-24.6%	-25.4%	27.3%
Livingston	2012	1,193	54	0	14	1	39	1,139	172	952	15
	2013	1,075	56	0	16	9	31	1,019	184	805	30
	% change	-9.9%	3.7%	NA	14.3%	800.0%	-20.5%	-10.5%	7.0%	-15.4%	100.0%

Appendix 3
New York State Index Crime Summary by County
 2012 vs. 2013

County	Year	Total	Violent	Forcible			Agg.	Property	Burglary	Larceny	MV
				Murder	Rape	Robbery	Assault				Theft
Madison	2012	1,334	59	0	12	5	42	1,275	269	975	31
	2013	1,150	54	1	9	6	38	1,096	204	869	23
	% change	-13.8%	-8.5%	NA	-25.0%	20.0%	-9.5%	-14.0%	-24.2%	-10.9%	-25.8%
Monroe	2012	25,407	2,672	43	173	1,009	1,447	22,735	4,965	16,794	976
	2013	23,051	2,682	48	141	1,133	1,360	20,369	4,266	15,217	886
	% change	-9.3%	0.4%	11.6%	-18.5%	12.3%	-6.0%	-10.4%	-14.1%	-9.4%	-9.2%
Montgomery	2012	1,186	58	4	9	12	33	1,128	228	877	23
	2013	1,126	48	0	4	13	31	1,078	187	864	27
	% change	-5.1%	-17.2%	-100.0%	-55.6%	8.3%	-6.1%	-4.4%	-18.0%	-1.5%	17.4%
Nassau	2012	19,555	2,456	28	71	1,098	1,259	17,099	2,739	13,359	1,001
	2013	18,556	2,101	25	53	1,038	985	16,455	2,326	13,242	887
	% change	-5.1%	-14.5%	-10.7%	-25.4%	-5.5%	-21.8%	-3.8%	-15.1%	-0.9%	-11.4%
Niagara	2012	6,952	820	4	48	207	561	6,132	1,437	4,469	226
	2013	6,641	798	4	37	240	517	5,843	1,311	4,314	218
	% change	-4.5%	-2.7%	0.0%	-22.9%	15.9%	-7.8%	-4.7%	-8.8%	-3.5%	-3.5%
Oneida	2012	6,384	597	2	43	164	388	5,787	1,211	4,381	195
	2013	5,940	531	13	43	136	339	5,409	1,031	4,212	166
	% change	-7.0%	-11.1%	550.0%	0.0%	-17.1%	-12.6%	-6.5%	-14.9%	-3.9%	-14.9%
Onondaga	2012	13,645	1,752	15	110	537	1,090	11,893	2,961	8,350	582
	2013	13,987	1,491	25	104	469	893	12,496	2,642	9,312	542
	% change	2.5%	-14.9%	66.7%	-5.5%	-12.7%	-18.1%	5.1%	-10.8%	11.5%	-6.9%
Ontario	2012	2,175	150	2	36	22	90	2,025	432	1,552	41
	2013	2,083	115	1	13	31	70	1,968	387	1,546	35
	% change	-4.2%	-23.3%	-50.0%	-63.9%	40.9%	-22.2%	-2.8%	-10.4%	-0.4%	-14.6%
Orange	2012	9,495	1,077	9	67	373	628	8,418	1,352	6,827	239
	2013	8,518	862	12	72	275	503	7,656	1,182	6,258	216
	% change	-10.3%	-20.0%	33.3%	7.5%	-26.3%	-19.9%	-9.1%	-12.6%	-8.3%	-9.6%
Orleans	2012	915	61	0	5	9	47	854	192	636	26
	2013	705	56	1	5	8	42	649	189	438	22
	% change	-23.0%	-8.2%	NA	0.0%	-11.1%	-10.6%	-24.0%	-1.6%	-31.1%	-15.4%
Oswego	2012	3,326	206	0	35	27	144	3,120	789	2,230	101
	2013	2,659	156	2	15	28	111	2,503	515	1,910	78
	% change	-20.1%	-24.3%	NA	-57.1%	3.7%	-22.9%	-19.8%	-34.7%	-14.3%	-22.8%
Otsego	2012	983	78	0	14	13	51	905	186	694	25
	2013	825	63	1	11	13	38	762	175	573	14
	% change	-16.1%	-19.2%	NA	-21.4%	0.0%	-25.5%	-15.8%	-5.9%	-17.4%	-44.0%

Appendix 3
New York State Index Crime Summary by County
 2012 vs. 2013

County	Year	Total	Violent	Murder	Forcible Rape	Robbery	Agg. Assault	Property	Burglary	Larceny	MV Theft
Putnam	2012	875	41	0	7	8	26	834	188	613	33
	2013	772	49	0	12	8	29	723	131	565	27
	% change	-11.8%	19.5%	NA	71.4%	0.0%	11.5%	-13.3%	-30.3%	-7.8%	-18.2%
Rensselaer	2012	4,644	445	9	28	130	278	4,199	980	3,082	137
	2013	4,133	469	3	22	159	285	3,664	917	2,613	134
	% change	-11.0%	5.4%	-66.7%	-21.4%	22.3%	2.5%	-12.7%	-6.4%	-15.2%	-2.2%
Rockland	2012	4,324	501	2	29	146	324	3,823	540	3,156	127
	2013	3,792	393	4	28	94	267	3,399	407	2,901	91
	% change	-12.3%	-21.6%	100.0%	-3.4%	-35.6%	-17.6%	-11.1%	-24.6%	-8.1%	-28.3%
St Lawrence	2012	2,239	122	0	14	11	97	2,117	417	1,660	40
	2013	1,964	112	1	10	12	89	1,852	346	1,468	38
	% change	-12.3%	-8.2%	NA	-28.6%	9.1%	-8.2%	-12.5%	-17.0%	-11.6%	-5.0%
Saratoga	2012	3,239	153	2	18	19	114	3,086	542	2,489	55
	2013	3,110	172	1	21	35	115	2,938	493	2,384	61
	% change	-4.0%	12.4%	-50.0%	16.7%	84.2%	0.9%	-4.8%	-9.0%	-4.2%	10.9%
Schenectady	2012	5,595	698	7	37	226	428	4,897	1,061	3,643	193
	2013	5,374	674	11	36	227	400	4,700	1,006	3,498	196
	% change	-3.9%	-3.4%	57.1%	-2.7%	0.4%	-6.5%	-4.0%	-5.2%	-4.0%	1.6%
Schoharie	2012	494	19	0	6	1	12	475	130	333	12
	2013	536	27	0	8	5	14	509	117	383	9
	% change	8.5%	42.1%	NA	33.3%	400.0%	16.7%	7.2%	-10.0%	15.0%	-25.0%
Schuyler	2012	185	21	1	4	1	15	164	40	115	9
	2013	164	14	0	0	1	13	150	33	110	7
	% change	-11.4%	-33.3%	-100.0%	-100.0%	0.0%	-13.3%	-8.5%	-17.5%	-4.3%	-22.2%
Seneca	2012	850	59	0	5	3	51	791	119	662	10
	2013	790	61	2	7	5	47	729	124	595	10
	% change	-7.1%	3.4%	NA	40.0%	66.7%	-7.8%	-7.8%	4.2%	-10.1%	0.0%
Steuben	2012	1,835	156	0	40	15	101	1,679	348	1,277	54
	2013	1,525	122	1	20	13	88	1,403	265	1,114	24
	% change	-16.9%	-21.8%	NA	-50.0%	-13.3%	-12.9%	-16.4%	-23.9%	-12.8%	-55.6%
Suffolk	2012	28,865	2,131	23	51	757	1,300	26,734	4,358	21,192	1,184
	2013	26,291	1,914	27	40	691	1,156	24,377	3,607	19,594	1,176
	% change	-8.9%	-10.2%	17.4%	-21.6%	-8.7%	-11.1%	-8.8%	-17.2%	-7.5%	-0.7%
Sullivan	2012	1,930	181	1	34	29	117	1,749	568	1,140	41
	2013	1,708	170	1	18	22	129	1,538	482	1,016	40
	% change	-11.5%	-6.1%	0.0%	-47.1%	-24.1%	10.3%	-12.1%	-15.1%	-10.9%	-2.4%

Appendix 3
New York State Index Crime Summary by County
 2012 vs. 2013

County	Year	Total	Violent	Forcible			Agg.	Property	Burglary	Larceny	MV
				Murder	Rape	Robbery	Assault				Theft
Tioga	2012	667	35	0	0	7	28	632	151	466	15
	2013	635	26	1	4	5	16	609	163	421	25
	% change	-4.8%	-25.7%	NA	NA	-28.6%	-42.9%	-3.6%	7.9%	-9.7%	66.7%
Tompkins	2012	2,162	87	0	10	33	44	2,075	296	1,739	40
	2013	2,223	73	4	9	24	36	2,150	322	1,800	28
	% change	2.8%	-16.1%	NA	-10.0%	-27.3%	-18.2%	3.6%	8.8%	3.5%	-30.0%
Ulster	2012	3,941	279	1	31	38	209	3,662	731	2,852	79
	2013	3,575	294	3	31	52	208	3,281	590	2,636	55
	% change	-9.3%	5.4%	200.0%	0.0%	36.8%	-0.5%	-10.4%	-19.3%	-7.6%	-30.4%
Warren	2012	1,420	125	3	18	9	95	1,295	170	1,099	26
	2013	1,289	53	0	11	7	35	1,236	157	1,071	8
	% change	-9.2%	-57.6%	-100.0%	-38.9%	-22.2%	-63.2%	-4.6%	-7.6%	-2.5%	-69.2%
Washington	2012	969	77	7	11	7	52	892	236	624	32
	2013	880	72	1	5	6	60	808	187	598	23
	% change	-9.2%	-6.5%	-85.7%	-54.5%	-14.3%	15.4%	-9.4%	-20.8%	-4.2%	-28.1%
Wayne	2012	1,844	131	1	21	18	91	1,713	458	1,215	40
	2013	1,818	146	2	21	27	96	1,672	467	1,170	35
	% change	-1.4%	11.5%	100.0%	0.0%	50.0%	5.5%	-2.4%	2.0%	-3.7%	-12.5%
Westchester	2012	14,968	2,448	20	72	924	1,432	12,520	1,882	10,005	633
	2013	14,019	2,181	11	57	839	1,274	11,838	1,667	9,559	612
	% change	-6.3%	-10.9%	-45.0%	-20.8%	-9.2%	-11.0%	-5.4%	-11.4%	-4.5%	-3.3%
Wyoming	2012	552	51	0	5	6	40	501	76	408	17
	2013	510	41	0	3	2	36	469	82	379	8
	% change	-7.6%	-19.6%	NA	-40.0%	-66.7%	-10.0%	-6.4%	7.9%	-7.1%	-52.9%
Yates	2012	428	20	0	6	0	14	408	111	293	4
	2013	413	14	0	6	1	7	399	112	284	3
	% change	-3.5%	-30.0%	NA	0.0%	NA	-50.0%	-2.2%	0.9%	-3.1%	-25.0%

Note: NA indicates that the percentage change is not applicable because the count in 2012 was zero.

Source: DCJS, Uniform Crime/Incident-Based Reporting system.

Includes all reports received as of 4/8/2014.

Appendix 4
New York State Index Crime Summary by County: 2013
Rates per 100,000 Population

County	Crime Rate			County	Crime Rate		
	Index	Violent	Property		Index	Violent	Property
Albany	3,047.7	323.9	2,723.8	Ontario	1,914.6	105.7	1,808.9
Allegany	1,648.7	112.0	1,536.7	Orange	2,269.8	229.7	2,040.1
Broome	3,393.5	258.7	3,134.8	Orleans	1,644.2	130.6	1,513.6
Cattaraugus	2,267.9	147.2	2,120.6	Oswego	2,184.9	128.2	2,056.7
Cayuga	1,903.9	159.7	1,744.2	Otsego	1,338.9	102.2	1,236.7
Chautauqua	2,721.9	204.8	2,517.1	Putnam	774.6	49.2	725.4
Chemung	2,471.9	169.6	2,302.3	Rensselaer	2,580.7	292.8	2,287.8
Chenango	1,857.3	96.3	1,761.0	Rockland	1,185.4	122.9	1,062.5
Clinton	2,034.4	131.1	1,903.3	St Lawrence	1,746.1	99.6	1,646.5
Columbia	1,788.5	121.8	1,666.7	Saratoga	1,394.0	77.1	1,316.9
Cortland	2,139.2	102.8	2,036.3	Schenectady	3,458.9	433.8	3,025.1
Delaware	1,733.5	116.6	1,616.9	Schoharie	1,677.9	84.5	1,593.4
Dutchess	1,672.8	192.6	1,480.2	Schuyler	881.5	75.3	806.3
Erie	3,184.9	444.3	2,740.6	Seneca	2,233.2	172.4	2,060.8
Essex	1,200.1	114.9	1,085.2	Steuben	1,537.0	123.0	1,414.0
Franklin	1,679.0	117.5	1,561.5	Suffolk	1,749.8	127.4	1,622.4
Fulton	2,792.8	113.4	2,679.4	Sullivan	2,227.6	221.7	2,005.9
Genesee	2,417.9	173.7	2,244.2	Tioga	1,261.4	51.6	1,209.7
Greene	1,393.5	117.3	1,276.2	Tompkins	2,158.7	70.9	2,087.8
Hamilton	1,300.3	83.9	1,216.4	Ulster	1,966.4	161.7	1,804.7
Herkimer	1,845.3	195.1	1,650.3	Warren	1,966.0	80.8	1,885.1
Jefferson	1,961.2	112.6	1,848.5	Washington	1,399.2	114.5	1,284.7
Lewis	1,208.5	87.9	1,120.6	Wayne	1,958.9	157.3	1,801.5
Livingston	1,661.1	86.5	1,574.5	Westchester	1,450.5	225.7	1,224.8
Madison	1,594.3	74.9	1,519.4	Wyoming	1,217.9	97.9	1,120.0
Monroe	3,074.4	357.7	2,716.7	Yates	1,627.6	55.2	1,572.4
Montgomery	2,256.6	96.2	2,160.4				
Nassau	1,371.0	155.2	1,215.8	New York City	2,314.8	623.9	1,690.9
Niagara	3,090.1	371.3	2,718.8	Non-New York City	2,102.7	212.7	1,890.0
Oneida	2,545.1	227.5	2,317.5	New York State	2,193.3	388.4	1,804.9
Onondaga	2,993.7	319.1	2,674.6				

Source: DCJS, Uniform Crime/Incident-Based Reporting system.
 Includes all reports received as of 4/8/2014.

Appendix 5
Violent Crime by Firearm
2012 vs. 2013

	New York City		2012 vs. 13 % Change	Non-New York City		2012 vs. 13 % Change
	2012	2013		2012	2013	
Violent Crimes	52,993	52,384	-1.1%	26,288	23,929	-9.0%
Firearm Related	8,146	7,462	-8.4%	4,922	4,752	-3.5%
Percent Firearm	15.4%	14.2%		18.7%	19.9%	
Murder	419	335	-20.0%	269	307	14.1%
Firearm Related	241	194	-19.5%	170	166	-2.4%
Percent Firearm	57.5%	57.9%		63.2%	54.1%	
Forcible Rape	1,162	1,112	-4.3%	1,664	1,448	-13.0%
Firearm Related	19	28	47.4%	32	32	0.0%
Percent Firearm	1.6%	2.5%		1.9%	2.2%	
Robbery	20,201	19,170	-5.1%	8,348	7,981	-4.4%
Firearm Related	4,502	4,022	-10.7%	2,455	2,430	-1.0%
Percent Firearm	22.3%	21.0%		29.4%	30.4%	
Aggravated Assault	31,211	31,767	1.8%	16,007	14,193	-11.3%
Firearm Related	3,384	3,218	-4.9%	2,265	2,124	-6.2%
Percent Firearm	10.8%	10.1%		14.2%	15.0%	

Source: DCJS, Uniform Crime/Incident-Based Reporting system.
Includes all reports received as of 4/8/2014.

Appendix 6
Homicides and Homicides by Firearm
2004 - 2013

Year	Non-New York City		New York City		New York State	
	Homicides	Firearm Related	Homicides	Firearm Related	Homicides	Firearm Related
2004	329	156	570	349	899	505
2005	336	168	539	331	875	499
2006	331	185	596	367	927	552
2007	312	175	496	328	808	503
2008	312	179	523	294	835	473
2009	313	181	471	302	784	483
2010	330	200	536	323	866	523
2011	255	132	515	315	770	447
2012	269	170	419	241	688	411
2013	307	166	335	194	642	360
2004 vs. 2013 % Change	-6.7%	6.4%	-41.2%	-44.4%	-28.6%	-28.7%
2010 vs. 2013 % Change	-7.0%	-17.0%	-37.5%	-39.9%	-25.9%	-31.2%

Source: DCJS, Uniform Crime/Incident-Based Reporting system.
Includes all reports received as of 4/8/2014.