



Division of Criminal
Justice Services

Andrew M. Cuomo
Governor

Michael C. Green
Executive Deputy Commissioner

December 2020

Probation Population in New York State 2019

The state Division of Criminal Justice Services regulates and funds local probation departments that operate in New York City and each of the 57 counties outside of the five boroughs.

Probation is a court-ordered sentence that allows individuals who have been convicted of crimes to remain in the community while being supervised and connected to services and support to help them lead a crime-free life. This sanction is an alternative to incarceration, although some individuals serve what is known as split sentence: time in jail followed by probation supervision upon release from incarceration.

This report provides an overview of the state's adult (18 and older) probation population, which includes individuals whose probation supervision was transferred to New York from another state under the Interstate Compact (as of Dec. 31, 2019). Data for this report are derived from the Integrated Probation Registrant System, which is maintained by DCJS.

Demographic information (sex, age when sentenced and race/ethnicity) of individuals on probation; conviction offense type; and discharge type are presented for New York State and its two regions: New York City and the Rest of State.

- New York City: Bronx, Kings, Manhattan, Queens, Richmond
- Rest of State: Albany, Allegany, Broome, Cattaraugus, Cayuga, Chautauqua, Chemung, Chenango, Clinton, Columbia, Cortland, Delaware, Dutchess, Erie, Essex, Franklin, Fulton, Genesee, Greene, Hamilton, Herkimer, Jefferson, Lewis, Livingston, Madison, Monroe, Montgomery, Nassau, Niagara, Oneida, Onondaga, Ontario, Orange, Orleans, Oswego, Otsego, Rensselaer, Rockland, Putnam, Saratoga, Schoharie, Schenectady, Schuyler, Seneca, St. Lawrence, Steuben, Suffolk, Sullivan, Tioga, Tompkins, Ulster, Warren, Washington, Wayne, Westchester, Wyoming and Yates

The report also includes county-specific data in eight appendices:

- Appendix A: Probationers Sentenced to Probation, 2015 – 2019
- Appendix B: Probationers Under Supervision, 2015 – 2019
- Appendix C: Probationers Discharged from Supervision, 2015 – 2019
- Appendix D: Probationers Under Supervision on December 31, 2019 by Conviction Category
- Appendix E: Probationers Under Supervision on December 31, 2019 by Crime Category
- Appendix F: Probationers Under Supervision on December 31, 2019 by Sex
- Appendix G: Probationers Under Supervision on December 31, 2019 by Race/Ethnicity
- Appendix H: Probationers Discharged from Supervision in 2019 by Discharge Type

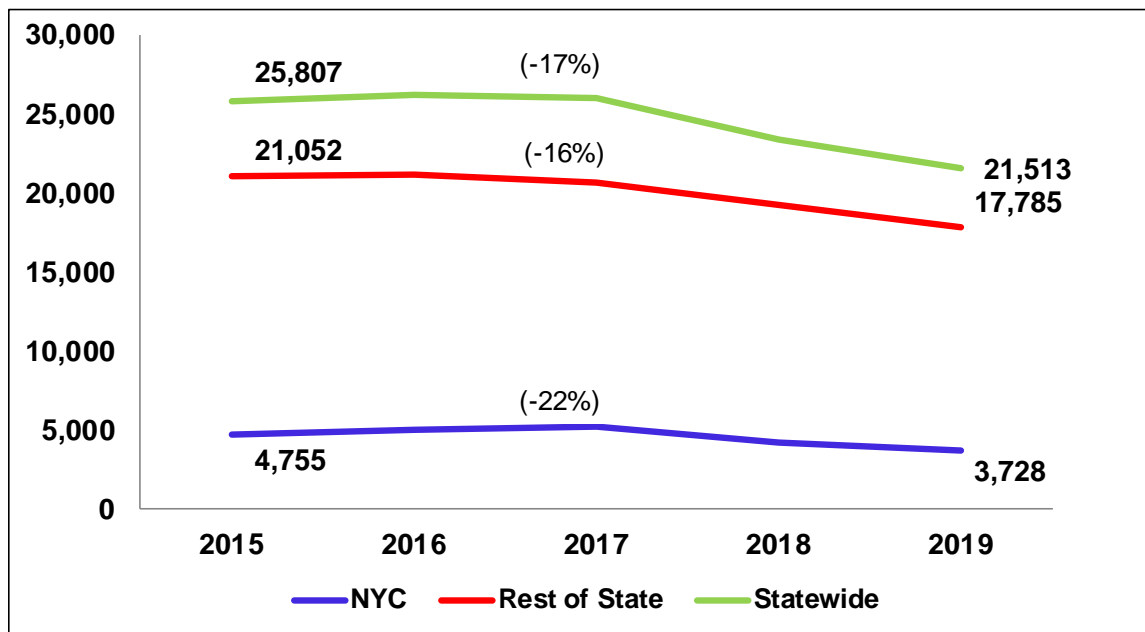
Adults Sentenced to Probation: Five-Year Trends

The number of adults sentenced to probation decreased 17 percent during the five-year period from 2015 to 2019.

New York City saw a steeper decline in the number of individuals under sentence than the Rest of State (22% vs. 16%).

In 2019, courts across the state sentenced 21,513 individuals to probation, with the vast majority of them supervised by departments in the Rest of State: 17,785 (83%) as compared to 3,728 (17%) in New York City.

Individuals Sentenced to Probation: 2015 – 2019



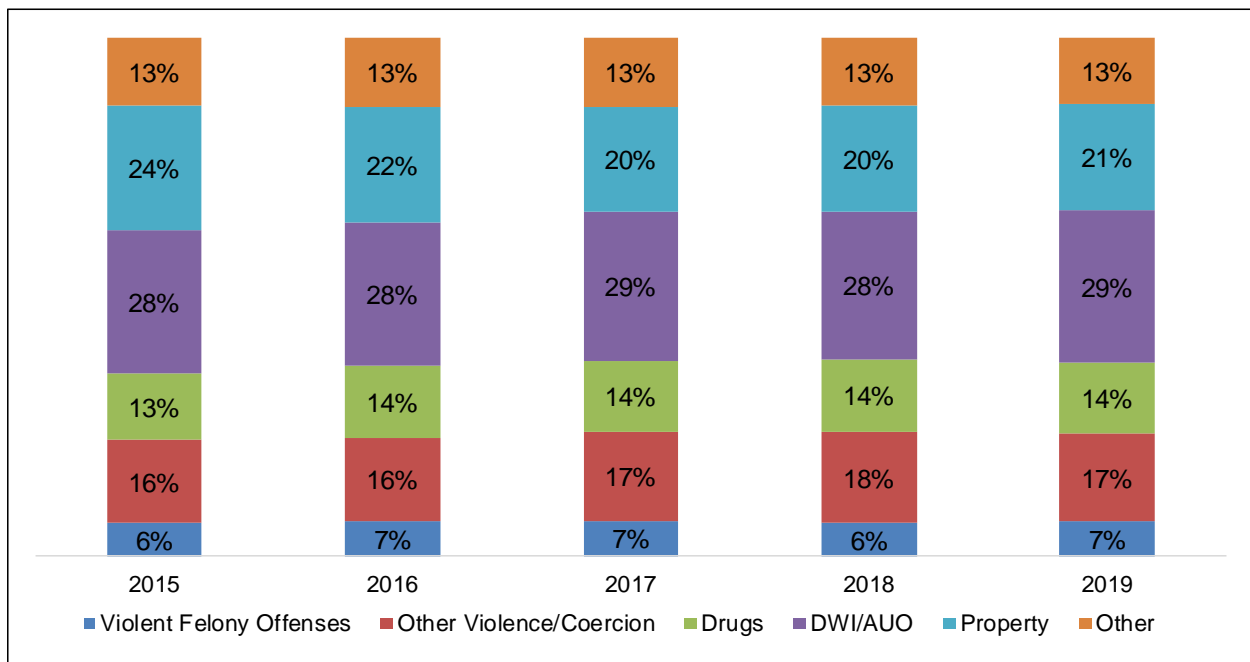
Note: This table excludes 4,842 individuals placed on interim supervision, which allows the court to adjourn sentencing for up to one year from the date of conviction to see whether individuals are successful on probation. The court may terminate interim supervision at any time if the individual is not successful and may sentence the individual to jail or prison.

Statewide Trends in Conviction Offenses

The proportion of individuals sentenced to probation by conviction offense remained consistent from 2015 through 2019, with DWI/AUO being the most common conviction offense type for each of the five years, followed by property offenses; other violence/coercion offenses; drug offenses; other offenses; and violent felony offenses.

There was little or no change in the percentage of individuals sentenced for these offenses, except for property offenses, which decreased from 24 percent in 2015 to 21 percent in 2019.

Conviction Offense Types Statewide: 2015 – 2019



Violent Felony Offenses (VFOs) are defined in Penal Law Article 70.02.

Other Violence/Coercion Offenses include, but are not limited to, felony and misdemeanor crimes against individuals or property, such as assault, harassment and arson.

Drug Offenses are defined in Penal Law Article 220 and Penal Law Article 221.

Driving While Intoxicated/Aggravated Unlicensed Operation Offenses are defined in Vehicle and Traffic Law and involve driving under the influence of alcohol or drugs and driving without a license.

Property Offenses include crimes such as burglary and trespass, criminal mischief, larceny and criminal possession of stolen property, among others.

Other Penal, Non-Penal or Unknown Offenses include crimes such as health care fraud, agricultural and markets offenses, and environmental conservation offenses. This category also includes individuals with convictions in other states whose probation supervision has been transferred to New York State under the Interstate Compact. Conviction charges in those cases may not be reported.

Trends in Conviction Offense Types by Region

Total sentences to probation declined statewide, in New York City and the Rest of State during the past five years. The decrease was driven by declines in different conviction offenses in each region:

- In New York City, fewer individuals were sentenced to probation after convictions to drug offenses (-33%), property offenses (-27%), and violent felony offenses (-27%)
- In the Rest of State, the most significant decreases were seen in individuals sentenced after convictions to property crimes (-29%) and other offenses (-19%).

Percent Change in Conviction Offenses: 2015 – 2019

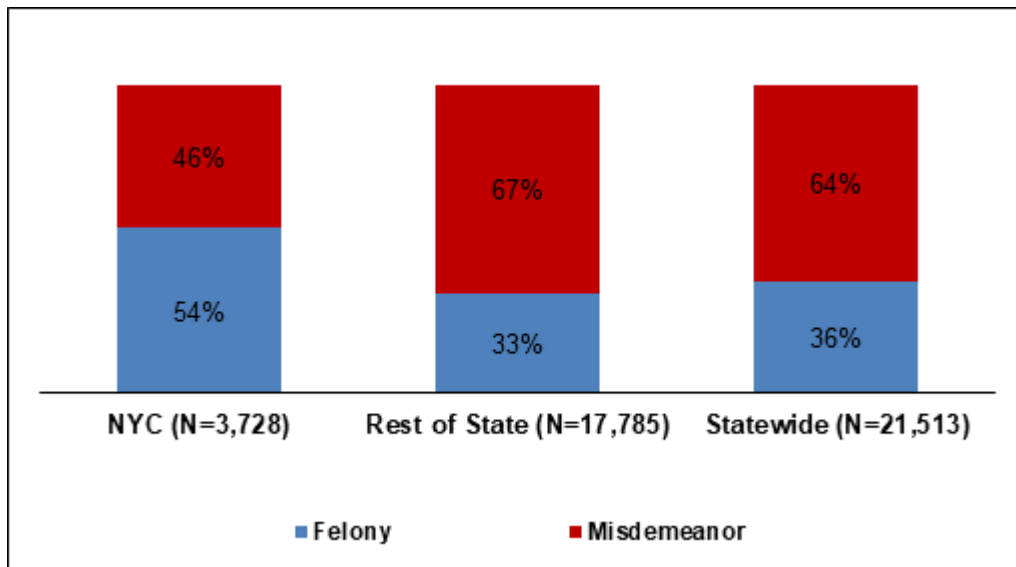
| Conviction Offense | NYC | | |
|-------------------------|---------------|---------------|-------------|
| | 2015 | 2019 | % Change |
| Violent Felony Offenses | 658 | 482 | -27% |
| Other Violence/Coercion | 843 | 779 | -8% |
| Drugs | 859 | 573 | -33% |
| DWI/AUO | 786 | 651 | -17% |
| Property | 950 | 692 | -27% |
| Other | 659 | 551 | -16% |
| Total | 4,755 | 3,728 | -22% |
| Conviction Offense | Rest of State | | |
| | 2015 | 2019 | % Change |
| Violent Felony Offenses | 984 | 949 | -4% |
| Other Violence/Coercion | 3,292 | 2,870 | -13% |
| Drugs | 2,439 | 2,392 | -2% |
| DWI/AUO | 6,355 | 5,643 | -11% |
| Property | 5,278 | 3,736 | -29% |
| Other | 2,704 | 2,195 | -19% |
| Total | 21,052 | 17,785 | -16% |
| Conviction Offense | Statewide | | |
| | 2015 | 2019 | % Change |
| Violent Felony Offenses | 1,642 | 1,431 | -13% |
| Other Violence/Coercion | 4,135 | 3,649 | -12% |
| Drugs | 3,298 | 2,965 | -10% |
| DWI/AUO | 7,141 | 6,294 | -12% |
| Property | 6,228 | 4,428 | -29% |
| Other | 3,363 | 2,746 | -18% |
| Total | 25,807 | 21,513 | -17% |

Conviction Crime Category

Nearly two-thirds (64%) of individuals sentenced to probation in New York State were convicted of misdemeanor crimes. There were regional differences in conviction crime category:

- A probation sentence for a misdemeanor conviction was more common in the Rest of State (67%) than in New York City (46%).
- In New York City, more than half (54%) of individuals sentenced to probation were convicted of felonies¹ compared to 33 percent in the Rest of State.

Conviction Crime Category by Region: 2019



¹ Convictions include Youthful Offender adjudications.

Conviction Offense Types

The conviction offense for which individuals were supervised varied greatly between New York City and the Rest of State:

- In New York City, 34 percent of individuals were convicted of a violent felony offense or other crime of violence/coercion, compared to 21 percent in the Rest of State.
- The most common conviction charges in the Rest of State were driving while intoxicated/aggravated unlicensed operation (32%) and property offenses (21%).

Conviction Offenses by Region: 2019

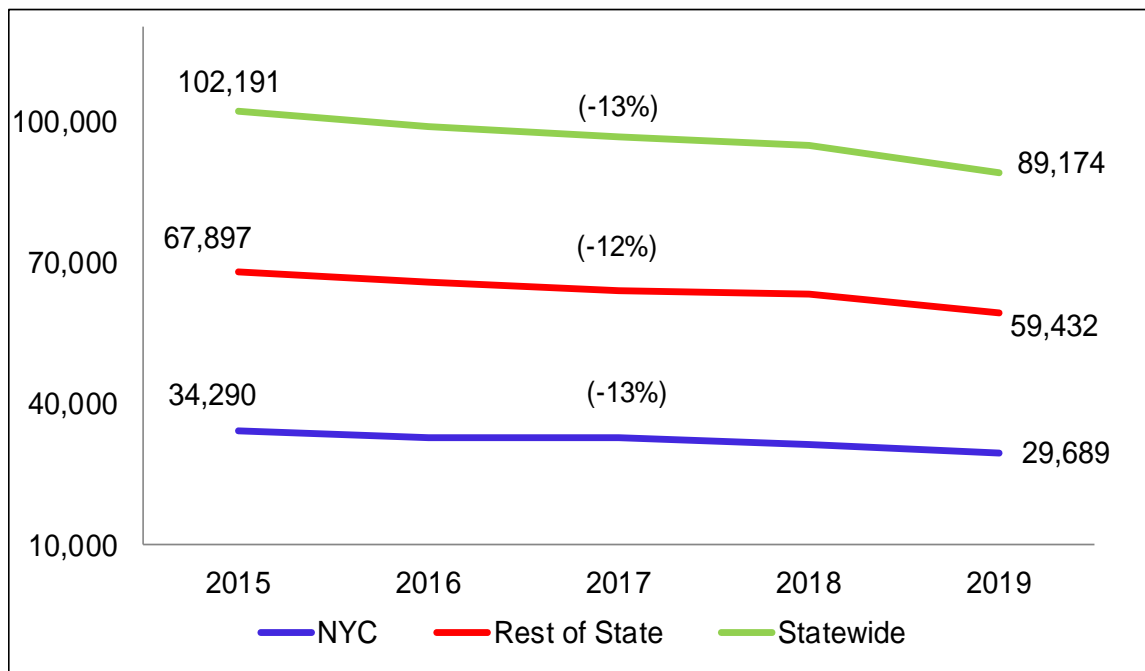
| Conviction Offense | NYC | | Rest of State | | Statewide | |
|--------------------------------|--------------|-------------|---------------|-------------|---------------|-------------|
| | N | % | N | % | N | % |
| Violent Felony Offenses | 482 | 13% | 949 | 5% | 1,431 | 7% |
| Other Violence/Coercion | 779 | 21% | 2,870 | 16% | 3,649 | 17% |
| Drugs | 573 | 15% | 2,392 | 13% | 2,965 | 14% |
| DWI/AUO | 651 | 17% | 5,643 | 32% | 6,294 | 29% |
| Property | 692 | 19% | 3,736 | 21% | 4,428 | 21% |
| Other | 551 | 15% | 2,195 | 12% | 2,746 | 13% |
| Total | 3,728 | 100% | 17,785 | 100% | 21,513 | 100% |

Individuals Under Probation Supervision: Five-Year Trends

Between 2015 and 2019, the number of individuals being supervised statewide declined by 13 percent (102,191 vs. 89,174).²

- The number of individuals supervised in New York City also declined by 13 percent while decreasing 12 percent in the Rest of State.

Individuals Under Probation Supervision: 2015 – 2019



Note: All individuals under supervision counts include a small number of interim supervision cases and individuals sentenced in other states but supervised in New York under the Interstate Compact.

² The Statewide numbers include cases in which the county of supervision information was not reported.

Individuals Under Supervision (Dec. 31, 2019)

There were 89,174 individuals under probation supervision in New York State on Dec. 31, 2019:

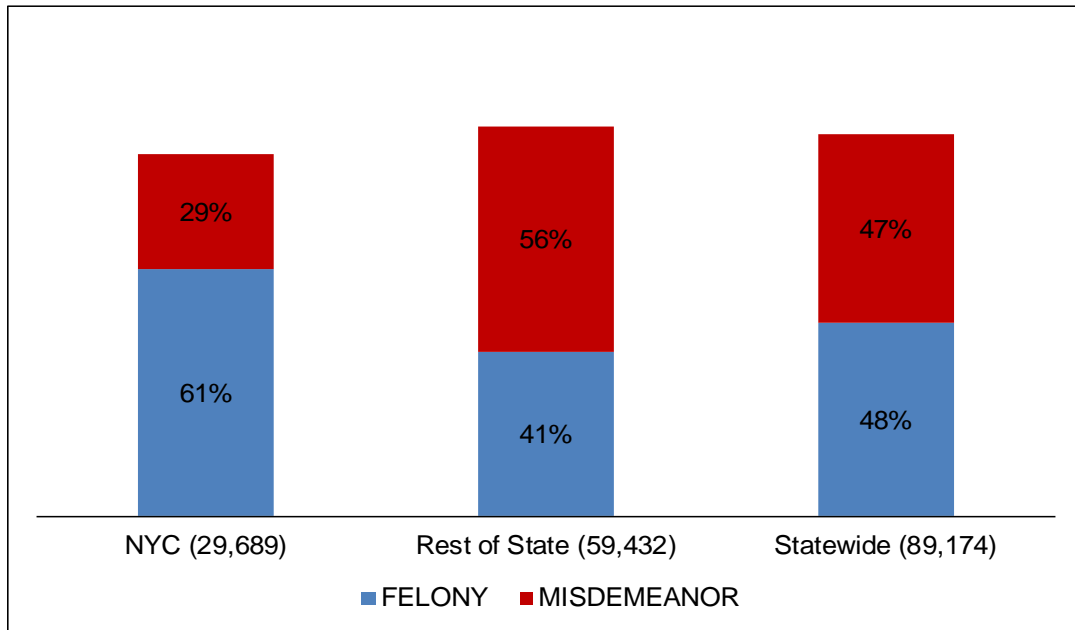
- 29,689 (33%) in New York City and
- 59,432 (67%) in the Rest of State.

Conviction Crime Category

Statewide, 48 percent of individuals were on probation for a felony conviction. The conviction crime category varied by region:

- In New York City, 61 percent were on probation following a felony conviction, as compared to 41 percent in the Rest of the State.
- In the Rest of State, more individuals were on probation following a misdemeanor conviction (56% vs. 29% in New York City).

Conviction Crime Category by Region: 2019



Conviction Offense Types

Statewide, the most common conviction offenses for individuals under supervision were DWI/AUO (26%) and property (18%) offenses.

Those two offenses also were the most common for individuals under supervision in the Rest of State (DWI/AUO: 33% and property: 19%).

In New York City, a drug offense was the most common conviction for individuals under supervision (25%), followed by violent felony offenses (15%) and property offenses (15%).

Conviction Offense by Region: 2019

| Conviction Offense | NYC | | Rest of State | | Statewide | |
|------------------------------------|---------------|-------------|---------------|-------------|---------------|-------------|
| | N | % | N | % | N | % |
| Violent Felony Offenses | 4,508 | 15% | 3,775 | 6% | 8,283 | 9% |
| Other Violence/Coercion | 4,102 | 14% | 9,310 | 16% | 13,412 | 15% |
| Drugs | 7,364 | 25% | 7,109 | 12% | 14,473 | 16% |
| DWI/AUO | 3,179 | 11% | 19,892 | 33% | 23,071 | 26% |
| Property | 4,491 | 15% | 11,283 | 19% | 15,774 | 18% |
| Other | 2,883 | 10% | 6,582 | 11% | 9,466 | 11% |
| Sentenced from Out of State | 3,162 | 11% | 1,481 | 2% | 4,695 | 5% |
| Total | 29,689 | 100% | 59,432 | 100% | 89,174 | 100% |

Note: When individuals with out-of-state convictions transfer into New York State, the conviction charge and/or crime class category may not be recorded in the Integrated Probation Registrant System.

Demographics

More than three-quarters of the individuals under probation supervision in New York State were male.

- There were more females on probation in the Rest of State (26%) than in New York City (15%).

Statewide, 44 percent of individuals supervised were White, as compared to 29 percent Black and 21 percent Hispanic.

- In New York City, the majority of individuals on probation were either Black (44%) or Hispanic (33%) while in the Rest of the State, individuals under supervision were predominantly White (59%).

Individuals under probation supervision in New York City were younger when sentenced: 30 percent were under the age of 25, compared to 20 percent in the Rest of State.

- The median age at sentencing was 29 in New York City and 32 in the Rest of State.

Demographics of Individuals under Supervision: 2019

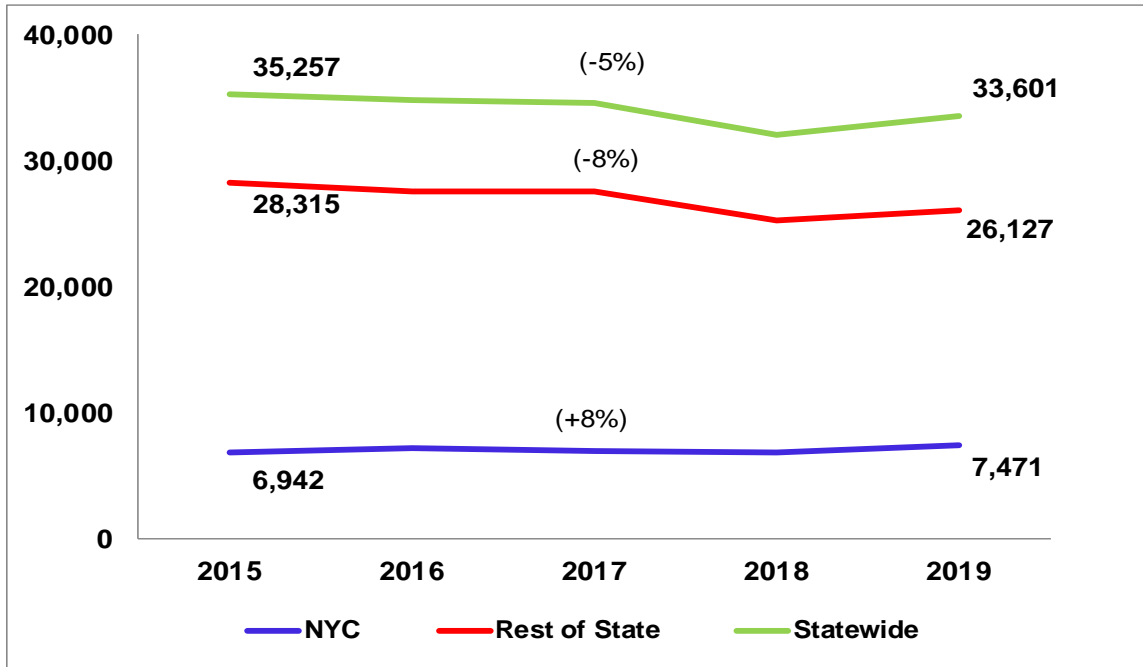
| Demographics | NYC | | Rest of State | | Statewide | |
|-------------------------------|---------------|-------------|---------------|-------------|---------------|-------------|
| | N | % | N | % | N | % |
| Sex | | | | | | |
| Female | 4,509 | 15% | 15,298 | 26% | 19,819 | 22% |
| Male | 24,771 | 83% | 44,045 | 74% | 68,857 | 77% |
| Unknown | 409 | 1% | 89 | <1% | 498 | 1% |
| Race/Ethnicity | | | | | | |
| White | 4,343 | 15% | 35,172 | 59% | 39,554 | 44% |
| Black | 12,981 | 44% | 12,952 | 22% | 25,943 | 29% |
| Hispanic | 9,813 | 33% | 8,738 | 15% | 18,554 | 21% |
| Asian | 865 | 3% | 523 | 1% | 1,388 | 2% |
| Am.Indian | 22 | <1% | 397 | 1% | 419 | <1% |
| Other | 820 | 3% | 457 | 1% | 1,278 | 1% |
| Not Reported | 845 | 3% | 1,193 | 2% | 2,038 | 2% |
| Age at Sentence | | | | | | |
| 16-17 years | 1,383 | 5% | 1,315 | 2% | 2,698 | 3% |
| 18-20 years | 3,311 | 11% | 4,139 | 7% | 7,452 | 8% |
| 21-24 years | 4,127 | 14% | 6,471 | 11% | 10,603 | 12% |
| 25-29 years | 4,901 | 17% | 9,704 | 16% | 14,611 | 16% |
| 30-39 years | 6,828 | 23% | 15,372 | 26% | 22,207 | 25% |
| 40+ years | 6,517 | 22% | 16,572 | 28% | 23,095 | 26% |
| Unknown | 2,622 | 9% | 5,859 | 10% | 8,508 | 10% |
| Total | 29,689 | 100% | 59,432 | 100% | 89,174 | 100% |
| Median age at sentence | 29 | | 32 | | 31 | |

Individuals Discharged from Probation: Five-Year Trends

The number of individuals discharged from probation supervision decreased by 5 percent statewide when comparing 2015 to 2019 (35,257 vs. 33,601).

Between 2015 and 2019, the number of individuals discharged from probation in New York City increased by 8 percent while in the Rest of State, it declined by the same percentage.

Individuals Discharged from Probation: 2015 - 2019



Discharge Type

In 2019, courts discharged 33,601 individuals from probation supervision, the vast majority of them in the Rest of State (78% or 26,127).

Probation sentences for most felony convictions are either three, four or five years. State law requires longer probation terms for certain felonies, including sexual assault.

Probation sentences for misdemeanor convictions are either one, two or three years, depending on the type of misdemeanor (Class A, B or unclassified). State law requires a six-year sentence for misdemeanor sexual assault.

Statewide, 38 percent of individuals under probation supervision were discharged after serving the full sentence imposed by the court, 20 percent of individuals were discharged from supervision early and 25 percent of individuals had their probation revoked:

- 19 percent for technical violations, such as violating one or more orders of their conditions of probation (e.g., failing drug tests, missing home and office visits); and
- 6 percent for new convictions.

Ten percent were “referred for further court action.” These usually are interim cases. Interim cases are “referred for further court action” to either be formally sentenced to probation or to have their supervision terminated.

There were regional differences in the type of discharges granted by the court:

- In New York City, 59 percent of individuals on probation remained under supervision until reaching their maximum expiration date, compared to 32 percent of individuals in the Rest of State.
- In the Rest of State, a higher percentage of individuals were granted early discharge by the court than in New York City (21% vs. 14%).
- There were more technical revocations in the Rest of State as compared to New York City (22% vs. 7%).

Discharge Type by Region: 2019

| Discharge Type | NYC | | Rest of State | | Statewide | |
|--|--------------|-------------|---------------|-------------|---------------|-------------|
| | N | % | N | % | N | % |
| Maximum Expiration | 4,414 | 59% | 8,480 | 32% | 12,896 | 38% |
| Early Discharge | 1,021 | 14% | 5,594 | 21% | 6,615 | 20% |
| Revoked Technical Violation | 551 | 7% | 5,749 | 22% | 6,300 | 19% |
| Revoked New Conviction | 496 | 7% | 1,455 | 6% | 1,951 | 6% |
| Early Discharge Due to New Conviction | 4 | <1% | 155 | 1% | 159 | <1% |
| Referred for Further Court Action | 126 | 2% | 3,227 | 12% | 3,353 | 10% |
| Death | 58 | 1% | 484 | 2% | 542 | 2% |
| Other | 801 | 11% | 983 | 4% | 1,785 | 5% |
| Total | 7,471 | 100% | 26,127 | 100% | 33,601 | 100% |

Maximum Expiration: The probation case reaches the final end date ordered by the court.

Early Discharge: the court of jurisdiction discharges an individual from probation supervision before the maximum expiration date set by the court occurs.

Revoked-Technical Violation: The court terminates the sentence because an individual fails to comply with the conditions of probation.

Revoked-New Conviction: The court terminates the sentence because an individual is convicted of a new offense.

Early Discharge Due to New Conviction: The court discharges an individual from probation after a subsequent conviction to a new offense.

Referred for Further Court Action: This typically occurs when interim cases are closed – for either a positive or negative outcome – and the court must determine next steps.

Other: The court imposes certain sentences to state prison pursuant to Penal Law Section 65.15 or authorizes the transfer of custody and supervision to federal authorities pursuant to Criminal Procedure Law Section 410.80(4).

Appendix A: Probationers Sentenced to Probation, 2015 - 2019

| COUNTY | 2015 | 2016 | 2017 | 2018 | 2019 |
|------------------------|---------------|---------------|---------------|---------------|---------------|
| ALBANY | 742 | 719 | 667 | 602 | 520 |
| ALLEGANY | 110 | 112 | 134 | 121 | 123 |
| BROOME | 702 | 610 | 646 | 535 | 515 |
| CATTARAUGUS | 258 | 225 | 231 | 204 | 182 |
| CAYUGA | 261 | 234 | 211 | 195 | 202 |
| CHAUTAUQUA | 358 | 353 | 287 | 305 | 289 |
| CHEMUNG | 249 | 264 | 242 | 199 | 173 |
| CHENANGO | 145 | 119 | 93 | 111 | 116 |
| CLINTON | 250 | 243 | 228 | 242 | 244 |
| COLUMBIA | 96 | 96 | 113 | 91 | 95 |
| CORTLAND | 182 | 177 | 189 | 174 | 157 |
| DELAWARE | 113 | 81 | 99 | 74 | 84 |
| DUTCHESS | 645 | 601 | 642 | 558 | 532 |
| ERIE | 1,163 | 1,156 | 1,064 | 1,023 | 984 |
| ESSEX | 95 | 88 | 78 | 68 | 74 |
| FRANKLIN | 145 | 142 | 175 | 183 | 167 |
| FULTON | 147 | 145 | 156 | 163 | 115 |
| GENESEE | 190 | 179 | 187 | 198 | 188 |
| GREENE | 124 | 89 | 101 | 96 | 96 |
| HAMILTON | 7 | 2 | 3 | 1 | 2 |
| HERKIMER | 112 | 116 | 126 | 93 | 110 |
| JEFFERSON | 386 | 353 | 324 | 342 | 263 |
| LEWIS | 59 | 60 | 69 | 66 | 45 |
| LIVINGSTON | 168 | 165 | 157 | 149 | 147 |
| MADISON | 116 | 135 | 135 | 146 | 125 |
| MONROE | 1,656 | 1,869 | 1,945 | 1,896 | 1,641 |
| MONTGOMERY | 131 | 138 | 138 | 151 | 161 |
| NASSAU | 1,384 | 1,583 | 1,611 | 1,515 | 1,699 |
| NIAGARA | 373 | 384 | 382 | 349 | 316 |
| ONEIDA | 500 | 554 | 509 | 436 | 362 |
| ONONDAGA | 1,581 | 1,478 | 1,362 | 1,255 | 1,073 |
| ONTARIO | 332 | 297 | 321 | 274 | 269 |
| ORANGE | 673 | 695 | 703 | 549 | 582 |
| ORLEANS | 66 | 88 | 63 | 66 | 57 |
| OSWEGO | 377 | 371 | 362 | 314 | 281 |
| OTSEGO | 62 | 76 | 72 | 59 | 46 |
| PUTNAM | 105 | 90 | 115 | 96 | 96 |
| RENSSELAER | 354 | 311 | 262 | 245 | 221 |
| ROCKLAND | 267 | 338 | 269 | 256 | 244 |
| ST LAWRENCE | 198 | 242 | 166 | 135 | 207 |
| SARATOGA | 308 | 367 | 354 | 363 | 335 |
| SCHENECTADY | 367 | 375 | 303 | 342 | 298 |
| SCHOHARIE | 54 | 73 | 64 | 62 | 66 |
| SCHUYLER | 58 | 57 | 49 | 59 | 46 |
| SENECA | 106 | 109 | 97 | 106 | 77 |
| STEUBEN | 277 | 280 | 279 | 245 | 223 |
| SUFFOLK | 2,009 | 1,930 | 2,001 | 1,649 | 1,381 |
| SULLIVAN | 216 | 192 | 173 | 207 | 191 |
| TIOGA | 107 | 104 | 85 | 90 | 71 |
| TOMPKINS | 206 | 201 | 173 | 190 | 161 |
| ULSTER | 334 | 403 | 391 | 367 | 372 |
| WARREN | 193 | 189 | 217 | 246 | 212 |
| WASHINGTON | 161 | 170 | 170 | 160 | 160 |
| WAYNE | 204 | 172 | 172 | 175 | 164 |
| WESTCHESTER | 1,423 | 1,350 | 1,368 | 1,233 | 1,084 |
| WYOMING | 90 | 88 | 92 | 92 | 87 |
| YATES | 57 | 67 | 61 | 77 | 54 |
| NON-NYC TOTAL | 21,052 | 21,105 | 20,686 | 19,198 | 17,785 |
| BRONX | 1,223 | 1,207 | 1,456 | 993 | 936 |
| KINGS | 1,112 | 1,393 | 1,361 | 1,033 | 900 |
| NEW YORK | 918 | 1,122 | 1,033 | 868 | 784 |
| QUEENS | 1,195 | 1,026 | 1,108 | 949 | 852 |
| RICHMOND | 307 | 294 | 303 | 320 | 256 |
| NYC TOTAL | 4,755 | 5,042 | 5,261 | 4,163 | 3,728 |
| STATEWIDE TOTAL | 25,807 | 26,147 | 25,947 | 23,361 | 21,513 |

Source: DCJS Integrated Probation Registrant System (IPRS) File as of 02/2/2020

Provided by: NYS DCJS OJRP 3/25/2020

Appendix B: Probationers Under Supervision, 2015 - 2019

| COUNTY | 2015 | 2016 | 2017 | 2018 | 2019 |
|------------------------|----------------|---------------|---------------|---------------|---------------|
| ALBANY | 2,454 | 2,288 | 2,168 | 2,032 | 1,972 |
| ALLEGANY | 327 | 343 | 351 | 355 | 355 |
| BROOME | 1,901 | 1,790 | 1,820 | 1,640 | 1,575 |
| CATTARAUGUS | 677 | 644 | 632 | 592 | 559 |
| CAYUGA | 693 | 690 | 642 | 561 | 515 |
| CHAUTAUQUA | 1,433 | 1,267 | 1,117 | 1,002 | 857 |
| CHEMUNG | 785 | 812 | 787 | 736 | 656 |
| CHENANGO | 391 | 342 | 320 | 322 | 323 |
| CLINTON | 743 | 717 | 731 | 744 | 762 |
| COLUMBIA | 335 | 320 | 336 | 333 | 335 |
| CORTLAND | 530 | 551 | 552 | 553 | 489 |
| DELAWARE | 241 | 208 | 229 | 215 | 212 |
| DUTCHESS | 1,938 | 1,818 | 1,801 | 1,727 | 1,698 |
| ERIE | 3,280 | 3,213 | 3,170 | 3,069 | 2,974 |
| ESSEX | 337 | 309 | 256 | 239 | 222 |
| FRANKLIN | 457 | 420 | 454 | 473 | 457 |
| FULTON | 386 | 373 | 396 | 431 | 365 |
| GENESEE | 460 | 444 | 450 | 425 | 448 |
| GREENE | 397 | 321 | 299 | 305 | 302 |
| HAMILTON | 30 | 22 | 14 | 7 | 9 |
| HERKIMER | 384 | 367 | 353 | 314 | 315 |
| JEFFERSON | 911 | 863 | 809 | 775 | 719 |
| LEWIS | 184 | 171 | 183 | 189 | 184 |
| LIVINGSTON | 474 | 456 | 439 | 401 | 383 |
| MADISON | 240 | 299 | 333 | 348 | 330 |
| MONROE | 5,375 | 5,298 | 5,482 | 5,645 | 5,386 |
| MONTGOMERY | 405 | 398 | 388 | 428 | 410 |
| NASSAU | 5,238 | 5,215 | 5,027 | 5,142 | 5,363 |
| NIAGARA | 1,132 | 1,109 | 1,149 | 1,113 | 1,127 |
| ONEIDA | 1,541 | 1,539 | 1,460 | 1,409 | 1,192 |
| ONONDAGA | 3,538 | 3,322 | 3,008 | 3,007 | 2,873 |
| ONTARIO | 1,169 | 1,189 | 1,237 | 1,084 | 1,102 |
| ORANGE | 2,323 | 2,222 | 2,126 | 2,025 | 1,910 |
| ORLEANS | 187 | 205 | 197 | 191 | 170 |
| OSWEGO | 931 | 916 | 932 | 867 | 797 |
| OTSEGO | 210 | 190 | 181 | 172 | 197 |
| PUTNAM | 485 | 421 | 406 | 384 | 384 |
| RENSSELAER | 995 | 926 | 853 | 877 | 844 |
| ROCKLAND | 1,153 | 1,155 | 1,038 | 996 | 902 |
| ST LAWRENCE | 733 | 622 | 486 | 444 | 501 |
| SARATOGA | 870 | 974 | 922 | 990 | 917 |
| SCHENECTADY | 1,073 | 1,056 | 946 | 1,008 | 966 |
| SCHOHARIE | 206 | 199 | 216 | 205 | 197 |
| SCHUYLER | 152 | 136 | 124 | 128 | 116 |
| SENECA | 253 | 265 | 260 | 269 | 275 |
| STEUBEN | 855 | 835 | 805 | 748 | 704 |
| SUFFOLK | 8,824 | 8,396 | 8,535 | 8,177 | 7,629 |
| SULLIVAN | 660 | 613 | 524 | 480 | 487 |
| TIOGA | 281 | 274 | 246 | 271 | 238 |
| TOMPKINS | 566 | 559 | 528 | 555 | 481 |
| ULSTER | 1,084 | 1,154 | 1,200 | 1,157 | 1,178 |
| WARREN | 556 | 540 | 594 | 597 | 588 |
| WASHINGTON | 510 | 476 | 452 | 428 | 408 |
| WAYNE | 635 | 596 | 587 | 588 | 557 |
| WESTCHESTER | 5,486 | 5,407 | 5,066 | 5,674 | 4,039 |
| WYOMING | 285 | 268 | 284 | 293 | 291 |
| YATES | 198 | 206 | 203 | 199 | 187 |
| NON-NYC TOTAL | 67,897 | 65,729 | 64,104 | 63,339 | 59,432 |
| BRONX | 8,147 | 7,705 | 7,708 | 7,245 | 6,867 |
| KINGS | 9,251 | 8,991 | 9,075 | 8,502 | 8,001 |
| NEW YORK | 8,092 | 7,675 | 7,364 | 7,528 | 7,120 |
| QUEENS | 7,287 | 7,062 | 7,050 | 6,765 | 6,286 |
| RICHMOND | 1,513 | 1,464 | 1,473 | 1,461 | 1,415 |
| NYC TOTAL | 34,290 | 32,897 | 32,670 | 31,501 | 29,689 |
| NOT REPORTED | 4 | 18 | 20 | 38 | 53 |
| STATEWIDE TOTAL | 102,191 | 98,644 | 96,794 | 94,878 | 89,174 |

Source: DCJS Integrated Probation Registrant System (IPRS) File as of 02/2/2020

Provided by: NYS DCJS OJRP 3/25/2020

Appendix C: Probationers Discharged from Supervision, 2015 - 2019

| COUNTY | 2015 | 2016 | 2017 | 2018 | 2019 |
|------------------------|---------------|---------------|---------------|---------------|---------------|
| ALBANY | 935 | 956 | 918 | 933 | 793 |
| ALLEGANY | 143 | 128 | 147 | 143 | 153 |
| BROOME | 761 | 773 | 759 | 803 | 745 |
| CATTARAUGUS | 277 | 305 | 295 | 296 | 305 |
| CAYUGA | 252 | 261 | 302 | 328 | 292 |
| CHAUTAUQUA | 831 | 997 | 779 | 787 | 824 |
| CHEMUNG | 269 | 273 | 309 | 299 | 292 |
| CHENANGO | 135 | 170 | 128 | 144 | 153 |
| CLINTON | 281 | 320 | 259 | 294 | 280 |
| COLUMBIA | 150 | 134 | 105 | 115 | 84 |
| CORTLAND | 171 | 173 | 205 | 191 | 218 |
| DELAWARE | 87 | 101 | 74 | 94 | 94 |
| DUTCHESS | 1,002 | 954 | 839 | 810 | 819 |
| ERIE | 1,549 | 1,337 | 1,352 | 1,460 | 1,347 |
| ESSEX | 135 | 124 | 130 | 80 | 106 |
| FRANKLIN | 228 | 212 | 154 | 183 | 188 |
| FULTON | 106 | 159 | 148 | 130 | 181 |
| GENESEE | 212 | 220 | 237 | 236 | 204 |
| GREENE | 208 | 188 | 149 | 140 | 128 |
| HAMILTON | 8 | 9 | 11 | 6 | 2 |
| HERKIMER | 108 | 117 | 157 | 148 | 126 |
| JEFFERSON | 482 | 458 | 456 | 444 | 418 |
| LEWIS | 84 | 86 | 80 | 66 | 75 |
| LIVINGSTON | 177 | 176 | 173 | 179 | 158 |
| MADISON | 195 | 121 | 157 | 162 | 165 |
| MONROE | 2,125 | 2,124 | 2,054 | 1,936 | 2,152 |
| MONTGOMERY | 143 | 150 | 159 | 119 | 158 |
| NASSAU | 2,062 | 1,769 | 1,917 | 1,567 | 1,635 |
| NIAGARA | 541 | 513 | 563 | 579 | 580 |
| ONEIDA | 614 | 578 | 588 | 505 | 614 |
| ONONDAGA | 1,342 | 1,599 | 1,753 | 1,383 | 1,294 |
| ONTARIO | 390 | 383 | 404 | 440 | 371 |
| ORANGE | 901 | 945 | 991 | 911 | 968 |
| ORLEANS | 90 | 100 | 100 | 91 | 76 |
| OSWEGO | 432 | 425 | 425 | 404 | 381 |
| OTSEGO | 69 | 104 | 79 | 72 | 35 |
| PUTNAM | 178 | 210 | 180 | 140 | 159 |
| RENSSELAER | 509 | 407 | 393 | 320 | 330 |
| ROCKLAND | 346 | 405 | 429 | 365 | 403 |
| ST LAWRENCE | 301 | 337 | 316 | 205 | 185 |
| SARATOGA | 471 | 322 | 393 | 354 | 430 |
| SCHENECTADY | 447 | 440 | 479 | 383 | 421 |
| SCHOHARIE | 82 | 85 | 74 | 73 | 87 |
| SCHUYLER | 72 | 67 | 64 | 57 | 57 |
| SENECA | 109 | 107 | 125 | 116 | 113 |
| STEUBEN | 328 | 369 | 387 | 397 | 368 |
| SUFFOLK | 3,919 | 3,576 | 3,328 | 3,427 | 3,368 |
| SULLIVAN | 220 | 267 | 310 | 277 | 238 |
| TIOGA | 175 | 167 | 176 | 116 | 139 |
| TOMPKINS | 265 | 276 | 252 | 238 | 287 |
| ULSTER | 523 | 495 | 545 | 582 | 601 |
| WARREN | 246 | 218 | 189 | 248 | 243 |
| WASHINGTON | 218 | 214 | 207 | 182 | 183 |
| WAYNE | 311 | 235 | 245 | 210 | 207 |
| WESTCHESTER | 1,832 | 1,704 | 1,925 | 817 | 1,655 |
| WYOMING | 172 | 159 | 138 | 153 | 150 |
| YATES | 96 | 87 | 67 | 92 | 89 |
| NON-NYC TOTAL | 28,315 | 27,589 | 27,578 | 25,230 | 26,127 |
| BRONX | 1,802 | 1,902 | 1,798 | 1,803 | 1,941 |
| KINGS | 1,614 | 1,804 | 1,816 | 1,912 | 1,909 |
| NEW YORK | 1,494 | 1,571 | 1,427 | 1,238 | 1,433 |
| QUEENS | 1,646 | 1,565 | 1,561 | 1,509 | 1,713 |
| RICHMOND | 386 | 408 | 412 | 414 | 475 |
| NYC TOTAL | 6,942 | 7,250 | 7,014 | 6,876 | 7,471 |
| NOT REPORTED | 0 | 3 | 3 | 3 | 3 |
| STATEWIDE TOTAL | 35,257 | 34,842 | 34,595 | 32,109 | 33,601 |

Source: DCJS Integrated Probation Registrant System (IPRS) File as of 02/2/2020

Provided by: NYS DCJS OJRP 3/25/2020

Appendix D: Probationers Under Supervision on December 31, 2019 by Conviction Category

| COUNTY | FELONY | MISDEMEANOR | OTHER/ UNKNOWN | TOTAL |
|------------------------|---------------|--------------------|---------------------------|---------------|
| ALBANY | 844 | 1,080 | 48 | 1,972 |
| ALLEGANY | 139 | 201 | 15 | 355 |
| BROOME | 669 | 871 | 35 | 1,575 |
| CATTARAUGUS | 254 | 291 | 14 | 559 |
| CAYUGA | 174 | 338 | 3 | 515 |
| CHAUTAUQUA | 266 | 551 | 40 | 857 |
| CHEMUNG | 344 | 287 | 25 | 656 |
| CHENANGO | 139 | 178 | 6 | 323 |
| CLINTON | 366 | 385 | 11 | 762 |
| COLUMBIA | 190 | 134 | 11 | 335 |
| CORTLAND | 150 | 329 | 10 | 489 |
| DELAWARE | 108 | 102 | 2 | 212 |
| DUTCHESS | 588 | 1,070 | 40 | 1,698 |
| ERIE | 1,686 | 1,193 | 95 | 2,974 |
| ESSEX | 82 | 138 | 2 | 222 |
| FRANKLIN | 176 | 276 | 5 | 457 |
| FULTON | 141 | 217 | 7 | 365 |
| GENESEE | 199 | 245 | 4 | 448 |
| GREENE | 129 | 169 | 4 | 302 |
| HAMILTON | 5 | 4 | 0 | 9 |
| HERKIMER | 143 | 166 | 6 | 315 |
| JEFFERSON | 330 | 368 | 21 | 719 |
| LEWIS | 91 | 91 | 2 | 184 |
| LIVINGSTON | 182 | 193 | 8 | 383 |
| MADISON | 142 | 186 | 2 | 330 |
| MONROE | 2,251 | 3,050 | 85 | 5,386 |
| MONTGOMERY | 165 | 238 | 7 | 410 |
| NASSAU | 1,885 | 3,377 | 101 | 5,363 |
| NIAGARA | 440 | 670 | 17 | 1,127 |
| ONEIDA | 518 | 646 | 28 | 1,192 |
| ONONDAGA | 1,047 | 1,774 | 52 | 2,873 |
| ONTARIO | 525 | 553 | 24 | 1,102 |
| ORANGE | 984 | 843 | 83 | 1,910 |
| ORLEANS | 80 | 86 | 4 | 170 |
| OSWEGO | 292 | 490 | 15 | 797 |
| OTSEGO | 104 | 92 | 1 | 197 |
| PUTNAM | 132 | 228 | 24 | 384 |
| RENSSELAER | 425 | 395 | 24 | 844 |
| ROCKLAND | 538 | 340 | 24 | 902 |
| ST LAWRENCE | 251 | 231 | 19 | 501 |
| SARATOGA | 402 | 494 | 21 | 917 |
| SCHENECTADY | 414 | 535 | 17 | 966 |
| SCHOHARIE | 91 | 102 | 4 | 197 |
| SCHUYLER | 59 | 54 | 3 | 116 |
| SENECA | 147 | 126 | 2 | 275 |
| STEUBEN | 468 | 235 | 1 | 704 |
| SUFFOLK | 2,566 | 4,838 | 225 | 7,629 |
| SULLIVAN | 240 | 227 | 20 | 487 |
| TIOGA | 113 | 101 | 24 | 238 |
| TOMPKINS | 195 | 276 | 10 | 481 |
| ULSTER | 383 | 772 | 23 | 1,178 |
| WARREN | 258 | 317 | 13 | 588 |
| WASHINGTON | 141 | 259 | 8 | 408 |
| WAYNE | 289 | 242 | 26 | 557 |
| WESTCHESTER | 1,472 | 2,391 | 176 | 4,039 |
| WYOMING | 128 | 155 | 8 | 291 |
| YATES | 93 | 92 | 2 | 187 |
| NON-NYC TOTAL | 24,633 | 33,292 | 1,507 | 59,432 |
| BRONX | 4,183 | 2,142 | 542 | 6,867 |
| KINGS | 4,907 | 2,186 | 908 | 8,001 |
| NEW YORK | 4,443 | 1,611 | 1,066 | 7,120 |
| QUEENS | 3,870 | 1,976 | 440 | 6,286 |
| RICHMOND | 721 | 569 | 125 | 1,415 |
| NYC TOTAL | 18,124 | 8,484 | 3,081 | 29,689 |
| NOT REPORTED | 1 | 0 | 52 | 53 |
| STATEWIDE TOTAL | 42,758 | 41,776 | 4,640 | 89,174 |

Source: DCJS Integrated Probation Registrant System (IPRS) File as of 02/2/2020

Provided by: NYS DCJS OJRP 3/25/2020

Appendix E: Probationers Under Supervision on December 31, 2019 by Crime Category

| COUNTY | VFO | Other Violence/Coercion | Drugs | DWI/AUO | Property | Other |
|------------------------|--------------|-------------------------|---------------|---------------|---------------|--------------|
| ALBANY | 97 | 348 | 227 | 576 | 425 | 251 |
| ALLEGANY | 26 | 76 | 49 | 82 | 64 | 44 |
| BROOME | 180 | 298 | 266 | 239 | 396 | 160 |
| CATTARAUGUS | 18 | 106 | 92 | 154 | 115 | 60 |
| CAYUGA | 23 | 103 | 59 | 125 | 122 | 82 |
| CHAUTAUQUA | 45 | 181 | 139 | 169 | 187 | 95 |
| CHEMUNG | 32 | 79 | 83 | 190 | 178 | 70 |
| CHENANGO | 32 | 66 | 61 | 65 | 63 | 30 |
| CLINTON | 29 | 153 | 113 | 224 | 155 | 81 |
| COLUMBIA | 16 | 51 | 59 | 94 | 58 | 45 |
| CORTLAND | 18 | 96 | 84 | 129 | 102 | 50 |
| DELAWARE | 7 | 36 | 57 | 42 | 44 | 23 |
| DUTCHESS | 46 | 228 | 216 | 634 | 328 | 201 |
| ERIE | 448 | 466 | 273 | 851 | 543 | 299 |
| ESSEX | 5 | 40 | 41 | 60 | 50 | 25 |
| FRANKLIN | 19 | 83 | 90 | 111 | 90 | 59 |
| FULTON | 13 | 77 | 37 | 81 | 98 | 52 |
| GENESEE | 26 | 73 | 29 | 151 | 92 | 72 |
| GREENE | 16 | 46 | 40 | 100 | 72 | 25 |
| HAMILTON | 1 | 4 | 1 | 1 | 0 | 2 |
| HERKIMER | 20 | 62 | 27 | 96 | 62 | 42 |
| JEFFERSON | 43 | 137 | 121 | 106 | 201 | 90 |
| LEWIS | 8 | 43 | 42 | 46 | 27 | 16 |
| LIVINGSTON | 22 | 73 | 56 | 121 | 60 | 41 |
| MADISON | 20 | 81 | 37 | 69 | 74 | 49 |
| MONROE | 555 | 705 | 500 | 1,987 | 978 | 575 |
| MONTGOMERY | 13 | 65 | 45 | 94 | 124 | 62 |
| NASSAU | 303 | 661 | 576 | 2,594 | 613 | 511 |
| NIAGARA | 79 | 191 | 155 | 350 | 218 | 116 |
| ONEIDA | 87 | 239 | 144 | 301 | 258 | 136 |
| ONONDAGA | 168 | 481 | 468 | 647 | 704 | 350 |
| ONTARIO | 50 | 222 | 109 | 313 | 235 | 160 |
| ORANGE | 77 | 216 | 306 | 735 | 309 | 184 |
| ORLEANS | 8 | 28 | 31 | 53 | 35 | 11 |
| OSWEGO | 42 | 134 | 124 | 190 | 217 | 74 |
| OTSEGO | 9 | 28 | 43 | 48 | 45 | 23 |
| PUTNAM | 19 | 64 | 57 | 152 | 44 | 21 |
| RENSSELAER | 44 | 146 | 115 | 221 | 189 | 110 |
| ROCKLAND | 78 | 90 | 87 | 296 | 224 | 104 |
| ST LAWRENCE | 27 | 86 | 94 | 100 | 101 | 75 |
| SARATOGA | 34 | 178 | 67 | 350 | 175 | 92 |
| SCHENECTADY | 45 | 179 | 124 | 241 | 232 | 127 |
| SCHOHARIE | 10 | 28 | 15 | 59 | 58 | 24 |
| SCHUYLER | 7 | 12 | 12 | 48 | 23 | 12 |
| SENECA | 12 | 44 | 31 | 87 | 63 | 37 |
| STEUBEN | 49 | 103 | 119 | 213 | 107 | 112 |
| SUFFOLK | 345 | 1,114 | 584 | 3,601 | 1,082 | 673 |
| SULLIVAN | 30 | 76 | 40 | 142 | 109 | 70 |
| TIOGA | 15 | 31 | 50 | 55 | 44 | 13 |
| TOMPKINS | 29 | 79 | 61 | 141 | 112 | 47 |
| ULSTER | 38 | 168 | 143 | 385 | 243 | 176 |
| WARREN | 30 | 98 | 96 | 174 | 131 | 47 |
| WASHINGTON | 21 | 69 | 36 | 116 | 105 | 54 |
| WAYNE | 46 | 80 | 52 | 184 | 97 | 91 |
| WESTCHESTER | 269 | 613 | 473 | 1,329 | 711 | 478 |
| WYOMING | 17 | 49 | 26 | 114 | 47 | 31 |
| YATES | 9 | 27 | 27 | 56 | 44 | 22 |
| NON-NYC TOTAL | 3,775 | 9,310 | 7,109 | 19,892 | 11,283 | 6,582 |
| BRONX | 1,199 | 1,127 | 1,614 | 648 | 1,004 | 706 |
| KINGS | 1,244 | 1,113 | 2,160 | 826 | 1,033 | 700 |
| NEW YORK | 839 | 743 | 2,180 | 411 | 1,104 | 758 |
| QUEENS | 1,054 | 890 | 1,146 | 1,081 | 1,066 | 595 |
| RICHMOND | 172 | 229 | 264 | 213 | 284 | 124 |
| NYC TOTAL | 4,508 | 4,102 | 7,364 | 3,179 | 4,491 | 2,883 |
| NOT REPORTED | 0 | 0 | 0 | 0 | 0 | 1 |
| STATEWIDE TOTAL | 8,283 | 13,412 | 14,473 | 23,071 | 15,774 | 9,466 |

Source: DCJS Integrated Probation Registrant System (IPRS) File as of 02/2/2020

Provided by: NYS DCJS OJRP 3/25/2020

Appendix F: Probationers Under Supervision on December 31, 2019 by Sex

| COUNTY | FEMALE | MALE | Not Reported | Total |
|------------------------|---------------|---------------|---------------------|---------------|
| ALBANY | 582 | 1,390 | 0 | 1,972 |
| ALLEGANY | 85 | 270 | 0 | 355 |
| BROOME | 441 | 1,134 | 0 | 1,575 |
| CATTARAUGUS | 153 | 406 | 0 | 559 |
| CAYUGA | 152 | 363 | 0 | 515 |
| CHAUTAUQUA | 212 | 645 | 0 | 857 |
| CHEMUNG | 242 | 414 | 0 | 656 |
| CHENANGO | 95 | 228 | 0 | 323 |
| CLINTON | 194 | 568 | 0 | 762 |
| COLUMBIA | 91 | 244 | 0 | 335 |
| CORTLAND | 139 | 350 | 0 | 489 |
| DELAWARE | 69 | 143 | 0 | 212 |
| DUTCHESS | 517 | 1,181 | 0 | 1,698 |
| ERIE | 679 | 2,295 | 0 | 2,974 |
| ESSEX | 66 | 156 | 0 | 222 |
| FRANKLIN | 139 | 318 | 0 | 457 |
| FULTON | 132 | 233 | 0 | 365 |
| GENESEE | 141 | 307 | 0 | 448 |
| GREENE | 89 | 213 | 0 | 302 |
| HAMILTON | 2 | 7 | 0 | 9 |
| HERKIMER | 76 | 239 | 0 | 315 |
| JEFFERSON | 216 | 503 | 0 | 719 |
| LEWIS | 45 | 139 | 0 | 184 |
| LIVINGSTON | 126 | 257 | 0 | 383 |
| MADISON | 99 | 231 | 0 | 330 |
| MONROE | 1,471 | 3,915 | 0 | 5,386 |
| MONTGOMERY | 137 | 272 | 1 | 410 |
| NASSAU | 997 | 4,366 | 0 | 5,363 |
| NIAGARA | 311 | 816 | 0 | 1,127 |
| ONEIDA | 358 | 834 | 0 | 1,192 |
| ONONDAGA | 754 | 2,118 | 1 | 2,873 |
| ONTARIO | 389 | 713 | 0 | 1,102 |
| ORANGE | 524 | 1,385 | 1 | 1,910 |
| ORLEANS | 56 | 114 | 0 | 170 |
| OSWEGO | 238 | 559 | 0 | 797 |
| OTSEGO | 60 | 137 | 0 | 197 |
| PUTNAM | 63 | 321 | 0 | 384 |
| RENSSELAER | 224 | 620 | 0 | 844 |
| ROCKLAND | 205 | 697 | 0 | 902 |
| ST LAWRENCE | 139 | 362 | 0 | 501 |
| SARATOGA | 247 | 670 | 0 | 917 |
| SCHENECTADY | 327 | 639 | 0 | 966 |
| SCHOHARIE | 53 | 144 | 0 | 197 |
| SCHUYLER | 27 | 89 | 0 | 116 |
| SENECA | 80 | 195 | 0 | 275 |
| STEUBEN | 197 | 507 | 0 | 704 |
| SUFFOLK | 1,605 | 5,942 | 82 | 7,629 |
| SULLIVAN | 141 | 346 | 0 | 487 |
| TIOGA | 73 | 165 | 0 | 238 |
| TOMPKINS | 133 | 348 | 0 | 481 |
| ULSTER | 371 | 807 | 0 | 1,178 |
| WARREN | 185 | 403 | 0 | 588 |
| WASHINGTON | 109 | 299 | 0 | 408 |
| WAYNE | 162 | 395 | 0 | 557 |
| WESTCHESTER | 730 | 3,305 | 4 | 4,039 |
| WYOMING | 87 | 204 | 0 | 291 |
| YATES | 63 | 124 | 0 | 187 |
| NON-NYC TOTAL | 15,298 | 44,045 | 89 | 59,432 |
| BRONX | 1,038 | 5,794 | 35 | 6,867 |
| KINGS | 1,081 | 6,761 | 159 | 8,001 |
| NEW YORK | 1,181 | 5,765 | 174 | 7,120 |
| QUEENS | 963 | 5,289 | 34 | 6,286 |
| RICHMOND | 246 | 1,162 | 7 | 1,415 |
| NYC TOTAL | 4,509 | 24,771 | 409 | 29,689 |
| NOT REPORTED | 12 | 41 | 0 | 53 |
| STATEWIDE TOTAL | 19,819 | 68,857 | 498 | 89,174 |

Source: DCJS Integrated Probation Registrant System (IPRS) File as of 02/2/2020

Provided by: NYS DCJS OJRP 3/25/2020

Appendix G: Probationers Under Supervision on December 31, 2019 by Race/Ethnicity

| COUNTY | WHITE | BLACK | HISPANIC | ASIAN | AM. INDIAN | TOTAL |
|------------------------|---------------|---------------|---------------|--------------|------------|---------------|
| ALBANY | 964 | 764 | 175 | 23 | 2 | 1,972 |
| ALLEGANY | 328 | 4 | 5 | 2 | 1 | 355 |
| BROOME | 1,108 | 321 | 112 | 11 | 2 | 1,575 |
| CATTARAUGUS | 446 | 28 | 18 | 1 | 62 | 559 |
| CAYUGA | 423 | 65 | 17 | 2 | 1 | 515 |
| CHAUTAUQUA | 617 | 96 | 115 | 0 | 11 | 857 |
| CHEMUNG | 499 | 99 | 30 | 2 | 1 | 656 |
| CHENANGO | 291 | 16 | 10 | 0 | 0 | 323 |
| CLINTON | 672 | 38 | 28 | 3 | 5 | 762 |
| COLUMBIA | 265 | 47 | 15 | 1 | 1 | 335 |
| CORTLAND | 422 | 45 | 9 | 2 | 1 | 489 |
| DELAWARE | 198 | 6 | 7 | 1 | 0 | 212 |
| DUTCHESS | 1,062 | 382 | 231 | 7 | 2 | 1,698 |
| ERIE | 1,446 | 1,143 | 259 | 21 | 38 | 2,974 |
| ESSEX | 200 | 5 | 5 | 5 | 2 | 222 |
| FRANKLIN | 349 | 7 | 13 | 0 | 85 | 457 |
| FULTON | 332 | 17 | 10 | 0 | 1 | 365 |
| GENESEE | 365 | 46 | 22 | 1 | 11 | 448 |
| GREENE | 231 | 23 | 25 | 0 | 0 | 302 |
| HAMILTON | 8 | 0 | 0 | 0 | 0 | 9 |
| HERKIMER | 290 | 15 | 8 | 1 | 1 | 315 |
| JEFFERSON | 583 | 96 | 27 | 5 | 4 | 719 |
| LEWIS | 181 | 2 | 1 | 0 | 0 | 184 |
| LIVINGSTON | 346 | 11 | 20 | 3 | 0 | 383 |
| MADISON | 295 | 14 | 5 | 2 | 3 | 330 |
| MONROE | 2,178 | 2,341 | 728 | 62 | 14 | 5,386 |
| MONTGOMERY | 268 | 37 | 98 | 3 | 0 | 410 |
| NASSAU | 2,198 | 1,323 | 1,546 | 147 | 7 | 5,363 |
| NIAGARA | 729 | 282 | 51 | 2 | 47 | 1,127 |
| ONEIDA | 831 | 240 | 91 | 19 | 2 | 1,192 |
| ONONDAGA | 1,570 | 1,025 | 191 | 22 | 39 | 2,873 |
| ONTARIO | 888 | 107 | 92 | 5 | 2 | 1,102 |
| ORANGE | 983 | 429 | 446 | 16 | 3 | 1,910 |
| ORLEANS | 137 | 17 | 13 | 0 | 1 | 170 |
| OSWEGO | 723 | 15 | 41 | 3 | 2 | 797 |
| OTSEGO | 179 | 12 | 5 | 0 | 0 | 197 |
| PUTNAM | 294 | 21 | 60 | 0 | 1 | 384 |
| RENSSELAER | 584 | 175 | 55 | 8 | 0 | 844 |
| ROCKLAND | 321 | 247 | 294 | 22 | 2 | 902 |
| ST LAWRENCE | 450 | 21 | 10 | 1 | 14 | 501 |
| SARATOGA | 838 | 45 | 20 | 5 | 1 | 917 |
| SCHENECTADY | 478 | 317 | 115 | 9 | 1 | 966 |
| SCHOHARIE | 183 | 6 | 3 | 0 | 2 | 197 |
| SCHUYLER | 109 | 1 | 2 | 0 | 0 | 116 |
| SENECA | 237 | 18 | 15 | 0 | 3 | 275 |
| STEUBEN | 633 | 41 | 11 | 3 | 0 | 704 |
| SUFFOLK | 3,698 | 1,219 | 1,919 | 59 | 10 | 7,629 |
| SULLIVAN | 306 | 76 | 79 | 2 | 0 | 487 |
| TIOGA | 227 | 8 | 2 | 0 | 1 | 238 |
| TOMPKINS | 362 | 82 | 23 | 8 | 2 | 481 |
| ULSTER | 850 | 172 | 142 | 2 | 2 | 1,178 |
| WARREN | 519 | 38 | 21 | 1 | 2 | 588 |
| WASHINGTON | 389 | 12 | 7 | 0 | 0 | 408 |
| WAYNE | 473 | 48 | 25 | 2 | 2 | 557 |
| WESTCHESTER | 1,159 | 1,277 | 1,456 | 29 | 3 | 4,039 |
| WYOMING | 279 | 7 | 5 | 0 | 0 | 291 |
| YATES | 178 | 3 | 5 | 0 | 0 | 187 |
| NON-NYC TOTAL | 35,172 | 12,952 | 8,738 | 523 | 397 | 59,432 |
| BRONX | 666 | 2,874 | 2,960 | 36 | 3 | 6,867 |
| KINGS | 958 | 4,370 | 2,076 | 131 | 2 | 8,001 |
| NEW YORK | 1,184 | 2,820 | 2,548 | 174 | 4 | 7,120 |
| QUEENS | 987 | 2,427 | 1,938 | 492 | 8 | 6,286 |
| RICHMOND | 548 | 490 | 291 | 32 | 5 | 1,415 |
| NYC TOTAL | 4,343 | 12,981 | 9,813 | 865 | 22 | 29,689 |
| NOT REPORTED | 39 | 10 | 3 | 0 | 0 | 53 |
| STATEWIDE TOTAL | 39,554 | 25,943 | 18,554 | 1,388 | 419 | 89,174 |

Source: DCJS Integrated Probation Registrant System (IPRS) File as of 02/2/2020
 Provided by: NYS DCJS OJRP 3/25/2020

Appendix H: Probationers Discharged from Supervision in 2019 by Discharge Type

| COUNTY | MAXIMUM EXPIRATION | EARLY DISCHARGE | REVOKED TECHNICAL VIOLATION | REVOKED NEW CONVICTION | EARLY DISCHARGE DUE TO NEW CONVICTION | REFERRED FOR FURTHER COURT ACTION | DEATH | OTHER | TOTAL |
|------------------------|--------------------|-----------------|-----------------------------|------------------------|---------------------------------------|-----------------------------------|------------|--------------|---------------|
| ALBANY | 322 | 95 | 160 | 42 | 14 | 113 | 7 | 40 | 793 |
| ALLEGANY | 43 | 52 | 22 | 13 | 6 | 7 | 5 | 5 | 153 |
| BROOME | 186 | 144 | 185 | 59 | 33 | 91 | 8 | 39 | 745 |
| CATTARAUGUS | 78 | 64 | 77 | 50 | 2 | 12 | 2 | 20 | 305 |
| CAYUGA | 108 | 79 | 62 | 22 | 3 | 6 | 1 | 11 | 292 |
| CHAUTAUQUA | 126 | 158 | 283 | 1 | 2 | 232 | 15 | 7 | 824 |
| CHEMUNG | 123 | 29 | 113 | 2 | 0 | 14 | 5 | 6 | 292 |
| CHENANGO | 50 | 15 | 29 | 11 | 1 | 32 | 4 | 11 | 153 |
| CLINTON | 122 | 23 | 74 | 17 | 0 | 22 | 6 | 16 | 280 |
| COLUMBIA | 48 | 11 | 13 | 3 | 1 | 3 | 2 | 3 | 84 |
| CORTLAND | 97 | 43 | 31 | 28 | 9 | 5 | 4 | 1 | 218 |
| DELAWARE | 34 | 30 | 23 | 3 | 0 | 1 | 1 | 2 | 94 |
| DUTCHESS | 242 | 135 | 165 | 41 | 5 | 202 | 17 | 12 | 819 |
| ERIE | 313 | 446 | 299 | 79 | 1 | 138 | 35 | 36 | 1,347 |
| ESSEX | 65 | 14 | 17 | 5 | 0 | 0 | 1 | 4 | 106 |
| FRANKLIN | 54 | 28 | 90 | 1 | 1 | 0 | 4 | 10 | 188 |
| FULTON | 57 | 50 | 36 | 30 | 0 | 1 | 1 | 6 | 181 |
| GENESEE | 48 | 39 | 62 | 21 | 0 | 25 | 7 | 2 | 204 |
| GREENE | 52 | 18 | 24 | 2 | 2 | 21 | 4 | 5 | 128 |
| HAMILTON | 1 | 1 | 0 | 0 | 0 | 0 | 0 | 0 | 2 |
| HERKIMER | 65 | 13 | 30 | 11 | 1 | 2 | 2 | 2 | 126 |
| JEFFERSON | 68 | 175 | 128 | 7 | 1 | 10 | 7 | 22 | 418 |
| LEWIS | 26 | 22 | 11 | 6 | 0 | 6 | 3 | 1 | 75 |
| LIVINGSTON | 63 | 30 | 33 | 19 | 0 | 4 | 2 | 7 | 158 |
| MADISON | 28 | 30 | 58 | 5 | 1 | 35 | 3 | 5 | 165 |
| MONROE | 796 | 518 | 484 | 167 | 13 | 116 | 29 | 29 | 2,152 |
| MONTGOMERY | 50 | 47 | 26 | 28 | 2 | 2 | 2 | 1 | 158 |
| NASSAU | 900 | 305 | 273 | 27 | 4 | 49 | 31 | 46 | 1,635 |
| NIAGARA | 159 | 111 | 81 | 30 | 6 | 169 | 9 | 15 | 580 |
| ONEIDA | 177 | 229 | 161 | 4 | 6 | 1 | 15 | 21 | 614 |
| ONONDAGA | 182 | 541 | 390 | 74 | 3 | 46 | 19 | 39 | 1,294 |
| ONTARIO | 90 | 117 | 59 | 30 | 1 | 47 | 9 | 18 | 371 |
| ORANGE | 288 | 297 | 125 | 53 | 3 | 138 | 15 | 49 | 968 |
| ORLEANS | 30 | 18 | 22 | 0 | 1 | 1 | 1 | 3 | 76 |
| OSWEGO | 83 | 131 | 124 | 4 | 1 | 17 | 7 | 14 | 381 |
| OTSEGO | 23 | 2 | 8 | 1 | 0 | 0 | 0 | 1 | 35 |
| PUTNAM | 83 | 12 | 30 | 1 | 0 | 25 | 1 | 7 | 159 |
| RENSSELAER | 118 | 42 | 103 | 8 | 1 | 31 | 5 | 22 | 330 |
| ROCKLAND | 152 | 109 | 40 | 18 | 0 | 7 | 16 | 61 | 403 |
| ST LAWRENCE | 92 | 15 | 68 | 1 | 1 | 0 | 2 | 6 | 185 |
| SARATOGA | 150 | 96 | 85 | 70 | 0 | 9 | 8 | 12 | 430 |
| SCHENECTADY | 159 | 82 | 96 | 23 | 1 | 41 | 6 | 13 | 421 |
| SCHOHARIE | 26 | 16 | 29 | 0 | 0 | 13 | 2 | 1 | 87 |
| SCHUYLER | 11 | 29 | 12 | 0 | 0 | 1 | 0 | 4 | 57 |
| SENECA | 37 | 32 | 33 | 8 | 0 | 1 | 0 | 2 | 113 |
| STEUBEN | 81 | 68 | 139 | 16 | 1 | 40 | 5 | 18 | 368 |
| SUFFOLK | 1,099 | 283 | 426 | 183 | 6 | 1,175 | 77 | 119 | 3,368 |
| SULLIVAN | 58 | 61 | 73 | 8 | 1 | 28 | 2 | 7 | 238 |
| TIOGA | 62 | 18 | 37 | 1 | 0 | 12 | 3 | 6 | 139 |
| TOMPKINS | 103 | 44 | 54 | 5 | 0 | 37 | 9 | 35 | 287 |
| ULSTER | 154 | 93 | 123 | 42 | 7 | 90 | 18 | 74 | 601 |
| WARREN | 54 | 68 | 81 | 23 | 3 | 8 | 4 | 2 | 243 |
| WASHINGTON | 75 | 21 | 78 | 2 | 0 | 0 | 1 | 6 | 183 |
| WAYNE | 118 | 14 | 46 | 9 | 0 | 13 | 2 | 5 | 207 |
| WESTCHESTER | 596 | 372 | 373 | 131 | 11 | 66 | 36 | 70 | 1,655 |
| WYOMING | 30 | 35 | 30 | 1 | 0 | 47 | 3 | 4 | 150 |
| YATES | 25 | 24 | 15 | 9 | 0 | 15 | 1 | 0 | 89 |
| NON-NYC TOTAL | 8,480 | 5,594 | 5,749 | 1,455 | 155 | 3,227 | 484 | 983 | 26,127 |
| BRONX | 1,291 | 155 | 159 | 93 | 0 | 9 | 24 | 210 | 1,941 |
| KINGS | 987 | 388 | 109 | 129 | 2 | 11 | 10 | 273 | 1,909 |
| NEW YORK | 774 | 198 | 153 | 132 | 1 | 23 | 9 | 143 | 1,433 |
| QUEENS | 1,086 | 211 | 98 | 98 | 1 | 80 | 14 | 125 | 1,713 |
| RICHMOND | 276 | 69 | 32 | 44 | 0 | 3 | 1 | 50 | 475 |
| NYC TOTAL | 4,414 | 1,021 | 551 | 496 | 4 | 126 | 58 | 801 | 7,471 |
| NOT REPORTED | 2 | 0 | 0 | 0 | 0 | 0 | 0 | 1 | 3 |
| STATEWIDE TOTAL | 12,896 | 6,615 | 6,300 | 1,951 | 159 | 3,353 | 542 | 1,785 | 33,601 |

Source: DCJS Integrated Probation Registrant System (IPRS) File as of 02/2/2020

Provided by: NYS DCJS OJRP 3/25/2020