



New York State Crime Report

Andrew M. Cuomo
Governor

Michael C. Green
Executive Deputy Commissioner

May 2019

Crime in New York State 2018 Preliminary Data

New York State and the FBI use seven Index crime categories as indicators of overall crime trends: murder, rape, robbery and aggravated assault, which are classified as violent crimes; and the property crimes of burglary, larceny and motor vehicle theft. The FBI created these categories to allow for uniform crime reporting across all 50 states. This report details 2018 Index crime in New York State, its 62 counties and two regions: New York City and the 57 counties outside of the five boroughs (Rest of State).

Police departments and sheriffs' offices report Index crime to the Division of Criminal Justice Services (DCJS) through the Uniform Crime Reporting and Incident-Based Reporting programs. This report also details Index crime rates per 100,000 population statewide and by county and region. DCJS uses county population data from the FBI, which is based on U.S. Census estimates, to calculate those crime rates.

New York State implemented the FBI's expanded definition of rape in 2015; this resulted in an uptick in violent crime and reported rapes in that year when compared to prior years. As a result, caution should be used when citing or interpreting any percentage changes between rapes reported in 2015 and any subsequent year, to those reported in 2014 and earlier.

The FBI [made the change](#) to more accurately reflect the scope and volume of sexual assaults nationwide. Before the implementation, those offenses would have been classified by the FBI and state as Part II sex offenses.

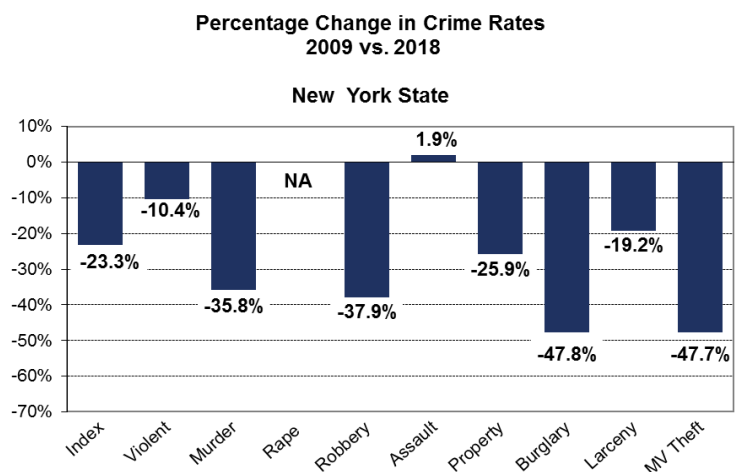
This report compares Index and violent crime over the 10-year period from 2009 through 2018, but it *does not* include percentage change comparisons between rape statistics reported in 2009 vs. 2018 because of the expanded definition.

Index crimes reported by police departments and sheriffs' offices to DCJS annually from 2014 to 2018 are online: www.criminaljustice.ny.gov (click the link to Statistics).

Reported Index crime in New York State declined for the sixth consecutive year in 2018, with 348,267 Index crimes reported. This is the fewest number of crimes reported since statewide reporting began in 1975. Robbery and burglary decreased significantly last year.

The historic low in reported Index crime has resulted in New York's Index crime rate declining by 23 percent between 2009 and 2018.

During that 10-year period, the violent crime rate decreased 10 percent and the property crime rate declined 26 percent. Appendix 1 has additional details.

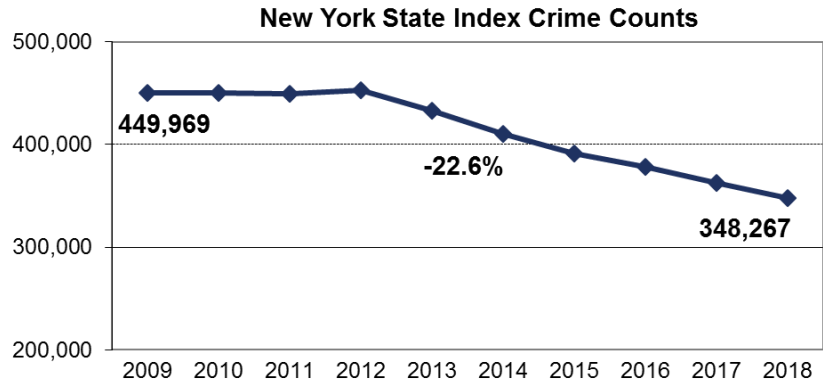


Change in Crime Volume: 2009 vs. 2018

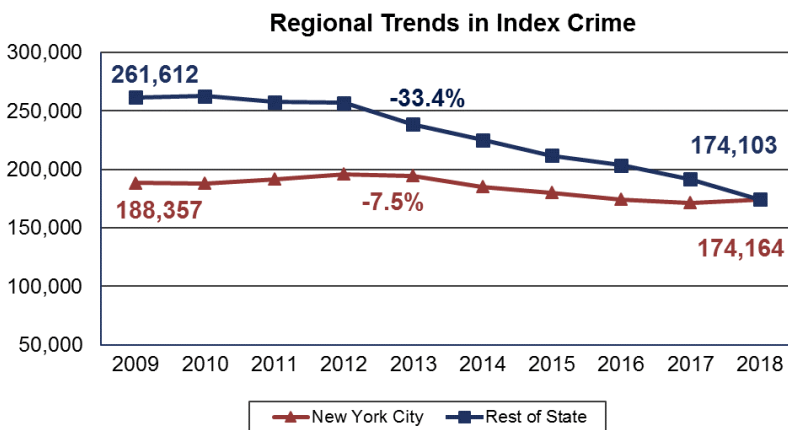
Between 2009 and 2018 Index crime declined, with 101,702 fewer crimes reported.

This represents a 22.6 percent reduction in the volume of reported crime over that 10-year period.

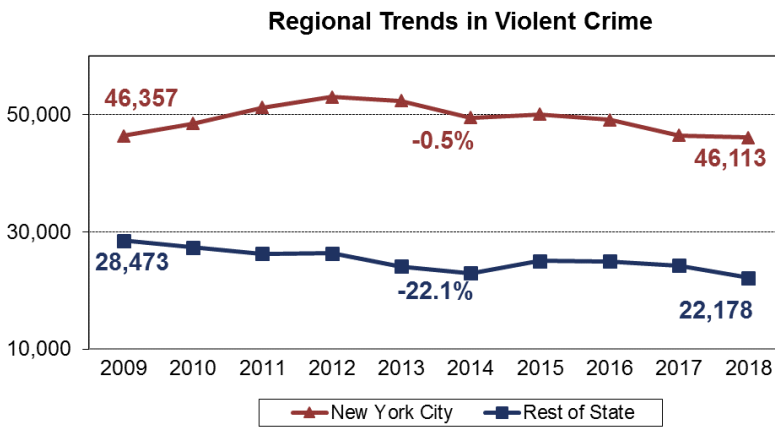
Reported Index crime has declined steadily since 2012.



Regional Trends in Crime: 2009 to 2018



Index crimes in the state's two regions — New York City (five counties, also referred to as boroughs) and Rest of State (57 counties) — declined when comparing 2009 to 2018. The decline in the Rest of State significantly outpaced the decrease in New York City: Between 2009 and 2018, reported Index crime declined 7.5 percent in New York City and 33.4 percent in the Rest of State. Index crime has decreased annually in Rest of State since 2010. New York City reported a slight increase for the first time in six years, up 2 percent when comparing 2018 to 2017.



The decrease in violent crime in the 57 counties also was significantly greater than in New York City: 22.1 percent vs. 0.5 percent. New York City has seen a large decrease in homicides during this time period, reporting a decline of 37.4 percent.

As noted, New York State's implementation of the FBI's expanded definition of rape resulted in an uptick in violent crime in both regions from 2014 to 2015. This change resulted in 3,691 additional crimes being classified as rape; prior to the change, those offenses would have been classified by the FBI and state as Part II sex offenses.

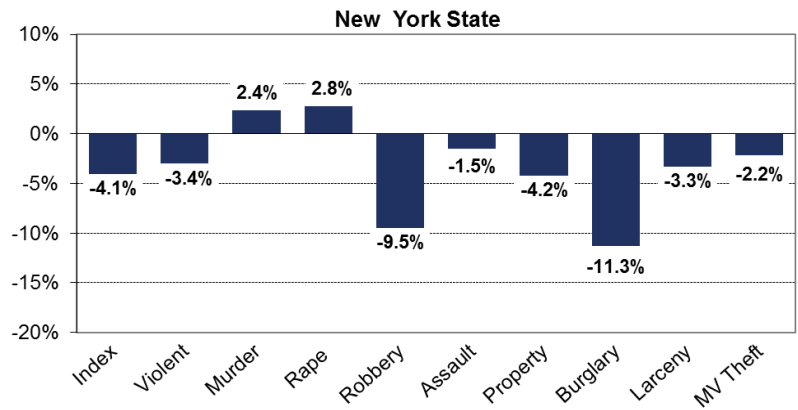
Statewide Crime Trends: 2017 vs. 2018

The number of Index crimes reported in New York State decreased 4.1 percent in 2018 as compared to the previous year.

Five of the seven Index crimes declined, with significant reductions occurring in burglary (-11.3%) and robbery (-9.5%).

Violent crime decreased by 3.4 percent, with decreases reported in robbery and aggravated assault. Reported rape increased slightly (+2.8%). While murder increased from 2017 (+2.4%), the total reported in 2018 was the second lowest number since reporting began in 1975. The previous all-time low occurred in 2017. Property crime decreased by 4.2 percent; all three property crime categories declined.

Percentage Change in Crime Volume
2017 vs. 2018



Regional Crime Trends: 2017 vs. 2018

New York City

Index crimes increased slightly (+1.7%) in 2018, largely attributable to the increase in larceny (+3.4%).

A significant reduction in robberies (-7.4%) contributed to the overall decrease in violent crime. New York City reported 295 murders in 2018, the second lowest ever recorded. The fewest murders occurred in 2017: 292.

Motor vehicle theft (-3.5%) and burglary (-2.4%) decreased, while reported rape (+18.5%) and aggravated assaults (+0.9%) increased.

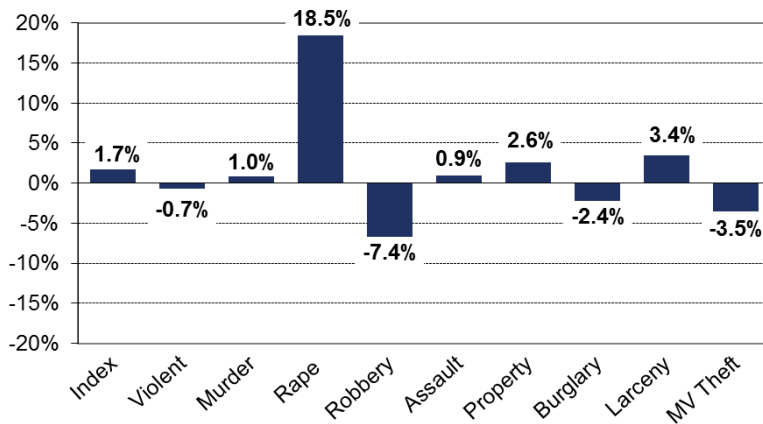
Rest of State

The Rest of State saw a decline in reported crime: down 9.2 percent when compared to 2017. The decrease was driven by reductions in six of the seven Index crimes. Notably, burglaries decreased 15.5 percent and robberies decreased 14.4 percent.

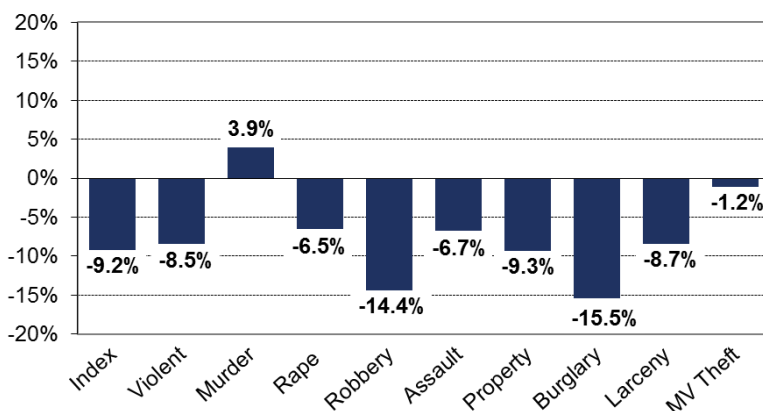
There also were decreases in larceny (-8.7%), aggravated assault (-6.7%), reported rape (-6.5%) and motor vehicle theft (-1.2%). Only the number of murders increased (+3.9%).

Appendix 3 lists crime rates by county for 2018 and Appendix 6 details crime counts by county for 2017 vs. 2018.

New York City



Rest of State

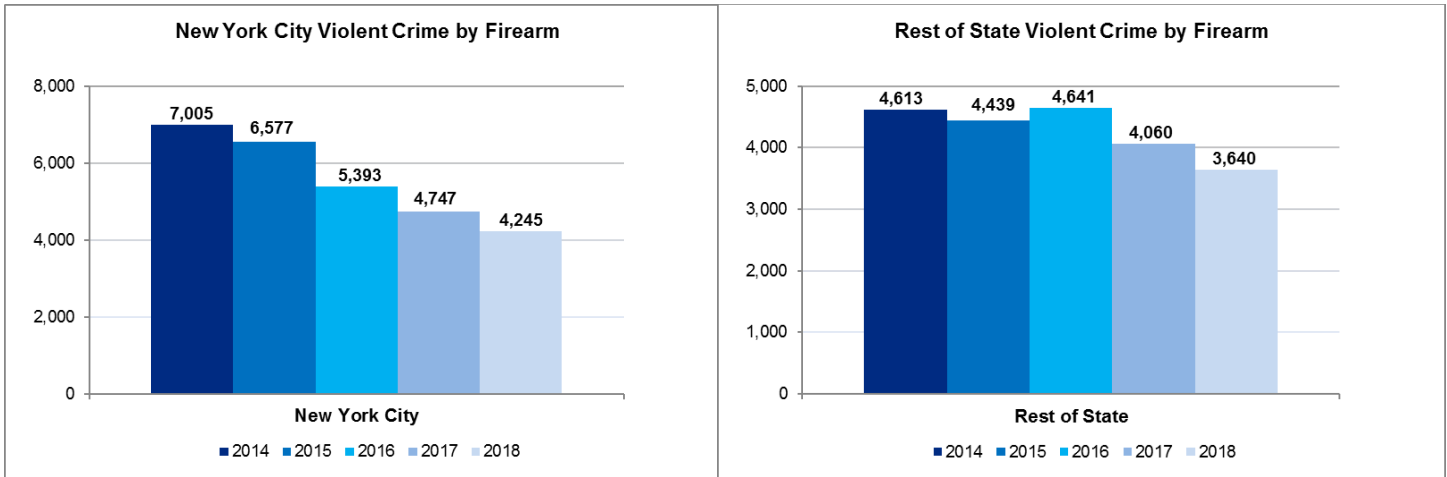


Trends in Violent Crime by Firearm: 2014 vs. 2018

Police departments and sheriffs' offices in New York State report to DCJS the number of violent crimes that involved the use of a firearm.

In New York City, violent crime involving firearms has decreased dramatically during the past five years: 39 percent when comparing 2014 to 2018, and 11 percent between 2017 and 2018.

Violent crimes involving a firearm in the 57 counties outside of New York City decreased by 21 percent when comparing 2014 to 2018, and 10 percent from 2017 to 2018. See Appendix 4 for more details.



Regional Trends in Homicide: 2017 vs. 2018

There were 560 reported homicides in 2018 in New York State, the second fewest since statewide reporting began in 1975. There were 13 more homicides reported in 2018 than 2017, which had the lowest number of homicides on record. Homicides in New York City increased 1 percent (295 vs. 292) and homicides in Rest of State increased 3.9 percent (265 vs. 255). Appendices 1 and 2 include more details.

Since 2009, homicides statewide have decreased 28.6 percent. Homicides involving a firearm experienced a similar trend, declining 33.1 percent when comparing 2009 to 2018.

The number of non-firearm related homicides (237) also decreased (-21.3%) when comparing 2009 to 2018.

New York State Homicides 2009 - 2018											% Change	
	2009	2010	2011	2012	2013	2014	2015	2016	2017	2018	2017-18	2009-18
New York State												
Total Homicide	784	866	770	688	645	616	620	631	547	560	2.4%	-28.6%
Non-Firearm Related	301	344	322	277	279	267	234	262	253	237	-6.3%	-21.3%
Firearm Related	483	522	448	411	366	349	386	369	294	323	9.9%	-33.1%
New York City												
Total Homicide	471	536	515	419	335	333	352	335	292	295	1.0%	-37.4%
Non-Firearm Related	169	213	200	178	141	145	117	132	139	134	-3.6%	-20.7%
Firearm Related	302	323	315	241	194	188	235	203	153	161	5.2%	-46.7%
Rest of State												
Total Homicide	313	330	255	269	310	283	268	296	255	265	3.9%	-15.3%
Non-Firearm Related	132	131	122	99	138	122	117	130	114	103	-9.6%	-22.0%
Firearm Related	181	199	133	170	172	161	151	166	141	162	14.9%	-10.5%

Appendices 1 through 6

Data Source: DCJS, Uniform Crime Reporting File; includes all reports received by the agency as of April 8, 2019.

The increase in violent crime and rape between 2014 and 2015 is attributable to New York State's implementation of the FBI's [expanded definition](#) of rape.

Appendix 1 New York State Index Crime Counts and Rates per 100,000 Population: 2009-2018

Counts	2009	2010	2011	2012	2013	2014	2015	2016	2017	2018	% change	
											2017-18	2009-18
Index Crime	449,969	450,534	449,035	452,483	432,783	410,295	391,547	377,995	362,968	348,267	-4.1%	-22.6%
Violent Crime	74,830	75,838	77,464	79,306	76,482	72,372	75,168	74,129	70,665	68,291	-3.4%	-8.7%
Murder	784	866	770	688	645	616	620	631	547	560	2.4%	-28.6%
Rape	2,565	2,766	2,773	2,831	2,616	2,539	6,149	6,244	6,377	6,555	2.8%	N/A
Robbery	28,063	28,406	28,351	28,557	27,180	23,998	23,896	22,292	20,063	18,158	-9.5%	-35.3%
Agg. Assault	43,418	43,800	45,570	47,230	46,041	45,219	44,503	44,962	43,678	43,018	-1.5%	-0.9%
Property Crime	375,139	374,696	371,571	373,177	356,301	337,923	316,379	303,866	292,303	279,976	-4.2%	-25.4%
Burglary	62,677	64,703	65,107	64,089	56,186	50,680	44,089	39,742	34,844	30,907	-11.3%	-50.7%
Larceny	290,679	289,581	287,807	291,882	284,604	271,506	256,945	249,791	244,100	236,000	-3.3%	-18.8%
MV Theft	21,783	20,412	18,657	17,206	15,511	15,737	15,345	14,333	13,359	13,069	-2.2%	-40.0%
Rates per 100,000 Pop.	2009	2010	2011	2012	2013	2014	2015	2016	2017	2018	% change	
											2017-18	2009-18
Index Crime	2,303.1	2,325.4	2,307.4	2,312.6	2,202.8	2,078.3	1,978.4	1,914.8	1,829.0	1,782.5	-4.5%	-23.3%
Violent Crime	383.0	391.4	398.1	405.3	389.3	366.6	379.8	375.5	356.1	349.5	-5.2%	-10.4%
Murder	4.0	4.5	4.0	3.5	3.3	3.1	3.1	3.2	2.8	2.9	-13.8%	-35.8%
Rape	13.1	14.3	14.2	14.5	13.3	12.9	31.1	31.6	32.1	33.6	1.6%	N/A
Robbery	143.6	146.6	145.7	146.0	138.3	121.6	120.7	112.9	101.1	92.9	-10.5%	-37.9%
Agg. Assault	222.2	226.1	234.2	241.4	234.3	229.1	224.9	227.8	220.1	220.2	-3.4%	1.9%
Property Crime	1,920.1	1,934.0	1,909.3	1,907.3	1,813.5	1,711.7	1,598.6	1,539.3	1,472.9	1,433.0	-4.3%	-25.9%
Burglary	320.8	334.0	334.6	327.6	286.0	256.7	222.8	201.3	175.6	158.2	-12.8%	-47.8%
Larceny	1,487.8	1,494.7	1,478.9	1,491.8	1,448.6	1,375.3	1,298.3	1,265.3	1,230.0	1,207.9	-2.8%	-19.2%
MV Theft	111.5	105.4	95.9	87.9	78.9	79.7	77.5	72.6	67.3	66.9	-7.3%	-47.7%

Appendix 2 New York State Index Crime Summary by Region: 2009-2018

New York City	2009	2010	2011	2012	2013	2014	2015	2016	2017	2018	% change	
											2017-18	2009-18
Index Crime	188,357	188,104	191,666	195,753	194,355	185,191	179,948	174,402	171,248	174,164	1.7%	-7.5%
Violent Crime	46,357	48,489	51,209	52,993	52,384	49,444	50,088	49,124	46,433	46,113	-0.7%	-0.5%
Murder	471	536	515	419	335	333	352	335	292	295	1.0%	-37.4%
Rape	832	1,036	1,092	1,162	1,112	1,070	2,244	2,372	2,375	2,814	18.5%	N/A
Robbery	18,597	19,608	19,773	20,201	19,170	16,581	16,946	15,544	13,995	12,962	-7.4%	-30.3%
Agg. Assault	26,457	27,309	29,829	31,211	31,767	31,460	30,546	30,873	29,771	30,042	0.9%	13.6%
Property Crime	142,000	139,615	140,457	142,760	141,971	135,747	129,860	125,278	124,815	128,051	2.6%	-9.8%
Burglary	18,780	17,926	18,159	18,635	16,606	15,916	14,098	12,041	11,104	10,837	-2.4%	-42.3%
Larceny	112,526	111,370	112,864	115,935	117,931	112,107	108,376	106,868	107,976	111,680	3.4%	-0.8%
MV Theft	10,694	10,319	9,434	8,190	7,434	7,724	7,386	6,369	5,735	5,534	-3.5%	-48.3%
Rest of State	2009	2010	2011	2012	2013	2014	2015	2016	2017	2018	% change	
											2017-18	2009-18
Index Crime	261,612	262,430	257,369	256,730	238,428	225,104	211,599	203,593	191,720	174,103	-9.2%	-33.4%
Violent Crime	28,473	27,349	26,255	26,313	24,098	22,928	25,080	25,005	24,232	22,178	-8.5%	-22.1%
Murder	313	330	255	269	310	283	268	296	255	265	3.9%	-15.3%
Rape	1,733	1,730	1,681	1,669	1,504	1,469	3,905	3,872	4,002	3,741	-6.5%	N/A
Robbery	9,466	8,798	8,578	8,356	8,010	7,417	6,950	6,748	6,068	5,196	-14.4%	-45.1%
Agg. Assault	16,961	16,491	15,741	16,019	14,274	13,759	13,957	14,089	13,907	12,976	-6.7%	-23.5%
Property Crime	233,139	235,081	231,114	230,417	214,330	202,176	186,519	178,588	167,488	151,925	-9.3%	-34.8%
Burglary	43,897	46,777	46,948	45,454	39,580	34,764	29,991	27,701	23,740	20,070	-15.5%	-54.3%
Larceny	178,153	178,211	174,943	175,947	166,673	159,399	148,569	142,923	136,124	124,320	-8.7%	-30.2%
MV Theft	11,089	10,093	9,223	9,016	8,077	8,013	7,959	7,964	7,624	7,535	-1.2%	-32.0%

Note: The increase in violent crime and rape between 2014 and 2015 is attributable to New York State's implementation of the FBI's [expanded definition](#) of rape.

Appendix 3
New York State Index Crime Summary by County: 2018
Rates per 100,000 Population

County	Crime Rate			County	Crime Rate		
	Index	Violent	Property		Index	Violent	Property
Albany	2,743.0	364.4	2,378.6	Onondaga	2,164.4	298.7	1,865.8
Allegany	999.3	164.0	835.3	Ontario	1,343.4	119.4	1,224.0
Bronx	2,431.3	860.6	1,570.7	Orange	1,569.2	208.1	1,361.1
Broome	2,715.4	317.9	2,397.6	Orleans	1,486.4	160.2	1,326.3
Cattaraugus	1,462.8	165.6	1,297.3	Oswego	1,753.7	162.4	1,591.3
Cayuga	1,625.9	257.1	1,368.8	Otsego	1,220.3	161.9	1,058.4
Chautauqua	2,100.9	284.5	1,816.4	Putnam	515.3	55.4	459.9
Chemung	1,722.5	160.5	1,562.0	Queens	1,421.3	379.9	1,041.4
Chenango	1,516.5	184.5	1,332.0	Rensselaer	1,972.2	247.5	1,724.7
Clinton	1,445.0	219.4	1,225.6	Richmond	1,210.7	297.1	913.6
Columbia	1,501.6	172.5	1,329.2	Rockland	920.4	105.5	814.9
Cortland	1,660.0	124.2	1,535.8	St Lawrence	1,135.5	132.4	1,003.1
Delaware	1,353.5	174.4	1,179.1	Saratoga	1,135.9	103.1	1,032.8
Dutchess	1,237.0	183.3	1,053.8	Schenectady	3,016.1	468.7	2,547.3
Erie	2,521.0	388.5	2,132.5	Schoharie	962.3	84.8	877.5
Essex	821.6	146.3	675.3	Schuyler	340.5	85.1	255.4
Franklin	1,028.3	139.8	888.5	Seneca	1,354.2	139.3	1,215.0
Fulton	1,789.6	274.2	1,515.5	Steuben	1,079.7	166.8	912.8
Genesee	1,673.3	228.4	1,444.9	Suffolk	1,323.4	94.4	1,229.1
Greene	1,305.3	243.8	1,061.5	Sullivan	1,619.4	261.5	1,357.8
Hamilton	1,057.0	68.9	988.1	Tioga	828.1	84.5	743.6
Herkimer	1,056.5	118.5	938.0	Tompkins	1,829.2	147.2	1,682.0
Jefferson	1,791.8	227.3	1,564.5	Ulster	1,278.8	159.4	1,119.4
Kings	1,913.8	549.4	1,364.4	Warren	1,507.2	152.0	1,355.2
Lewis	792.8	119.3	673.5	Washington	695.7	117.9	577.8
Livingston	1,014.4	92.9	921.4	Wayne	1,628.5	192.0	1,436.5
Madison	1,350.7	193.4	1,157.4	Westchester	999.0	172.9	826.1
Monroe	2,289.9	308.6	1,981.3	Wyoming	842.8	159.5	683.4
Montgomery	1,479.5	161.9	1,317.7	Yates	1,002.9	69.6	933.3
Nassau	998.5	111.7	886.7				
New York	3,028.2	544.0	2,484.3	New York City	2,043.4	541.0	1,502.4
Niagara	2,052.2	287.4	1,764.8	Rest of State	1,580.6	201.3	1,379.3
Oneida	2,049.3	284.3	1,765.0	New York State	1,782.5	349.5	1,433.0

Appendix 4
Violent Crime by Firearm
2014 - 2018

	New York City					% Change	
	2014	2015	2016	2017	2018	2017-18	2014-18
Violent Crime	49,444	50,088	49,124	46,433	46,113	-0.7%	-6.7%
Firearm Related	7,005	6,577	5,393	4,747	4,245	-10.6%	-39.4%
Percent Firearm Related	14.2%	13.1%	11.0%	10.2%	9.2%		
Murder	333	352	335	292	295	1.0%	-11.4%
Firearm Related	188	235	203	153	161	5.2%	-14.4%
Percent Firearm Related	56.5%	66.8%	60.6%	52.4%	54.6%		
Rape	1,070	2,244	2,372	2,375	2,814	18.5%	N/A
Firearm Related	30	18	20	19	18	-5.3%	N/A
Percent Firearm Related	2.8%	0.8%	0.8%	0.8%	0.6%		
Robbery	16,581	16,946	15,544	13,995	12,962	-7.4%	-21.8%
Firearm Related	3,415	3,308	2,556	2,151	1,865	-13.3%	-45.4%
Percent Firearm Related	20.6%	19.5%	16.4%	15.4%	14.4%		
Agg Assault	31,460	30,546	30,873	29,771	30,042	0.9%	-4.5%
Firearm Related	3,372	3,016	2,614	2,424	2,201	-9.2%	-34.7%
Percent Firearm Related	10.7%	9.9%	8.5%	8.1%	7.3%		

	Rest of State					% Change	
	2014	2015	2016	2017	2018	2017-18	2014-18
Violent Crime	22,928	25,080	25,005	24,232	22,178	-8.5%	-3.3%
Firearm Related	4,613	4,439	4,641	4,060	3,640	-10.3%	-21.1%
Percent Firearm Related	20.1%	17.7%	18.6%	16.8%	16.4%		
Murder	283	268	296	255	265	3.9%	-6.4%
Firearm Related	161	151	166	141	162	14.9%	0.6%
Percent Firearm Related	56.9%	56.3%	56.1%	55.3%	61.1%		
Rape	1,469	3,905	3,872	4,002	3,741	-6.5%	N/A
Firearm Related	27	13	17	19	25	31.6%	N/A
Percent Firearm Related	1.8%	0.3%	0.4%	0.5%	0.7%		
Robbery	7,417	6,950	6,748	6,068	5,196	-14.4%	-29.9%
Firearm Related	2,284	2,068	2,117	1,678	1,455	-13.3%	-36.3%
Percent Firearm Related	30.8%	29.8%	31.4%	27.7%	28.0%		
Agg Assault	13,759	13,957	14,089	13,907	12,976	-6.7%	-5.7%
Firearm Related	2,141	2,207	2,341	2,222	1,998	-10.1%	-6.7%
Percent Firearm Related	15.6%	15.8%	16.6%	16.0%	15.4%		

Note: Due to the expanded definition of rape, percent change comparison for rape statistics reported in 2014 vs. 2018 is not shown.

Appendix 5
Homicides and Homicides by Firearm
2009-2018

Year	New York City		Rest of State		New York State	
	Homicides	Firearm Related	Homicides	Firearm Related	Homicides	Firearm Related
2009	471	302	313	181	784	483
2010	536	323	330	199	866	522
2011	515	315	255	133	770	448
2012	419	241	269	170	688	411
2013	335	194	310	172	645	366
2014	333	188	283	161	616	349
2015	352	235	268	151	620	386
2016	335	203	296	166	631	369
2017	292	153	255	141	547	294
2018	295	161	265	162	560	323
2009 vs. 2018 % Change	-37.4%	-46.7%	-15.3%	-10.5%	-28.6%	-33.1%

Appendix 6
New York State Index Crime Summary by County
2017 vs. 2018

County	Year	Total Violent	Murder	Rape	Robbery	Agg. Assault	Property	Burglary	Larceny	MV Theft	
Albany	2017	8,779	1,161	8	116	312	725	7,618	788	6,608	222
	2018	8,355	1,110	13	118	260	719	7,245	754	6,264	227
	% change	-4.8%	-4.4%	62.5%	1.7%	-16.7%	-0.8%	-4.9%	-4.3%	-5.2%	2.3%
Allegany	2017	508	80	2	34	3	41	428	80	334	14
	2018	457	75	1	29	4	41	382	86	283	13
	% change	-10.0%	-6.3%	-50.0%	-14.7%	33.3%	0.0%	-10.7%	7.5%	-15.3%	-7.1%
Bronx	2017	35,507	12,534	72	551	3,570	8,341	22,973	2,108	19,509	1,356
	2018	35,355	12,514	91	662	3,213	8,548	22,841	2,095	19,434	1,312
	% change	-0.4%	-0.2%	26.4%	20.1%	-10.0%	2.5%	-0.6%	-0.6%	-0.4%	-3.2%
Broome	2017	5,582	696	4	150	138	404	4,886	790	3,952	144
	2018	5,134	601	7	127	109	358	4,533	754	3,634	145
	% change	-8.0%	-13.6%	75.0%	-15.3%	-21.0%	-11.4%	-7.2%	-4.6%	-8.0%	0.7%
Cattaraugus	2017	1,160	131	2	48	12	69	1,029	190	806	33
	2018	1,078	122	2	36	8	76	956	145	765	46
	% change	-7.1%	-6.9%	0.0%	-25.0%	-33.3%	10.1%	-7.1%	-23.7%	-5.1%	39.4%
Cayuga	2017	1,367	246	1	81	23	141	1,121	189	907	25
	2018	1,233	195	0	46	29	120	1,038	135	859	44
	% change	-9.8%	-20.7%	-100.0%	-43.2%	26.1%	-14.9%	-7.4%	-28.6%	-5.3%	76.0%
Chautauqua	2017	2,788	346	3	65	57	221	2,442	513	1,847	82
	2018	2,644	358	2	95	53	208	2,286	473	1,736	77
	% change	-5.2%	3.5%	-33.3%	46.2%	-7.0%	-5.9%	-6.4%	-7.8%	-6.0%	-6.1%
Chemung	2017	1,567	143	4	28	32	79	1,424	185	1,205	34
	2018	1,438	134	3	19	25	87	1,304	198	1,073	33
	% change	-8.2%	-6.3%	-25.0%	-32.1%	-21.9%	10.1%	-8.4%	7.0%	-11.0%	-2.9%
Chenango	2017	715	83	3	46	3	31	632	124	497	11
	2018	707	86	1	52	3	30	621	108	498	15
	% change	-1.1%	3.6%	-66.7%	13.0%	0.0%	-3.2%	-1.7%	-12.9%	0.2%	36.4%
Clinton	2017	1,214	135	0	66	8	61	1,079	171	885	23
	2018	1,146	174	2	87	9	76	972	139	804	29
	% change	-5.6%	28.9%	NA	31.8%	12.5%	24.6%	-9.9%	-18.7%	-9.2%	26.1%
Columbia	2017	970	134	1	39	11	83	836	139	669	28
	2018	888	102	1	44	0	57	786	109	659	18
	% change	-8.5%	-23.9%	0.0%	12.8%	-100.0%	-31.3%	-6.0%	-21.6%	-1.5%	-35.7%
Cortland	2017	994	49	0	28	10	11	945	165	766	14
	2018	775	58	2	25	10	21	717	157	537	23
	% change	-22.0%	18.4%	NA	-10.7%	0.0%	90.9%	-24.1%	-4.8%	-29.9%	64.3%

Appendix 6
New York State Index Crime Summary by County
2017 vs. 2018

County	Year	Total	Violent	Murder	Rape	Robbery	Agg. Assault	Property	Burglary	Larceny	MV Theft
Delaware	2017	520	59	0	32	2	25	461	103	346	12
	2018	582	75	1	31	3	40	507	91	400	16
	% change	11.9%	27.1%	NA	-3.1%	50.0%	60.0%	10.0%	-11.7%	15.6%	33.3%
Dutchess	2017	4,091	570	5	106	110	349	3,521	413	3,027	81
	2018	3,584	531	6	113	102	310	3,053	346	2,576	131
	% change	-12.4%	-6.8%	20.0%	6.6%	-7.3%	-11.2%	-13.3%	-16.2%	-14.9%	61.7%
Erie	2017	23,371	3,463	46	251	1,111	2,055	19,908	3,755	15,013	1,140
	2018	22,918	3,532	58	305	1,121	2,048	19,386	3,495	14,719	1,172
	% change	-1.9%	2.0%	26.1%	21.5%	0.9%	-0.3%	-2.6%	-6.9%	-2.0%	2.8%
Essex	2017	420	63	1	34	2	26	357	91	252	14
	2018	292	52	2	29	0	21	240	50	184	6
	% change	-30.5%	-17.5%	100.0%	-14.7%	-100.0%	-19.2%	-32.8%	-45.1%	-27.0%	-57.1%
Franklin	2017	688	100	1	57	5	37	588	136	426	26
	2018	515	70	0	47	2	21	445	84	339	22
	% change	-25.1%	-30.0%	-100.0%	-17.5%	-60.0%	-43.2%	-24.3%	-38.2%	-20.4%	-15.4%
Fulton	2017	1,088	118	0	51	12	55	970	143	800	27
	2018	940	144	0	51	14	79	796	94	676	26
	% change	-13.6%	22.0%	NA	0.0%	16.7%	43.6%	-17.9%	-34.3%	-15.5%	-3.7%
Genesee	2017	1,143	168	0	42	20	106	975	159	784	32
	2018	945	129	4	32	15	78	816	116	655	45
	% change	-17.3%	-23.2%	NA	-23.8%	-25.0%	-26.4%	-16.3%	-27.0%	-16.5%	40.6%
Greene	2017	635	139	1	38	4	96	496	99	381	16
	2018	605	113	1	40	1	71	492	106	379	7
	% change	-4.7%	-18.7%	0.0%	5.3%	-75.0%	-26.0%	-0.8%	7.1%	-0.5%	-56.3%
Hamilton	2017	36	4	0	2	0	2	32	7	22	3
	2018	46	3	0	0	1	2	43	19	24	0
	% change	27.8%	-25.0%	NA	-100.0%	NA	0.0%	34.4%	171.4%	9.1%	-100.0%
Herkimer	2017	1,126	155	1	40	7	107	971	148	795	28
	2018	642	72	0	22	6	44	570	125	421	24
	% change	-43.0%	-53.5%	-100.0%	-45.0%	-14.3%	-58.9%	-41.3%	-15.5%	-47.0%	-14.3%
Jefferson	2017	2,259	239	4	86	22	127	2,020	292	1,681	47
	2018	2,002	254	0	106	21	127	1,748	242	1,464	42
	% change	-11.4%	6.3%	-100.0%	23.3%	-4.5%	0.0%	-13.5%	-17.1%	-12.9%	-10.6%
Kings	2017	49,766	14,593	111	709	4,497	9,276	35,173	3,659	29,589	1,925
	2018	50,106	14,384	98	802	4,157	9,327	35,722	3,585	30,417	1,720
	% change	0.7%	-1.4%	-11.7%	13.1%	-7.6%	0.5%	1.6%	-2.0%	2.8%	-10.6%

Appendix 6
New York State Index Crime Summary by County
2017 vs. 2018

County	Year	Total	Violent	Murder	Rape	Robbery	Agg. Assault	Property	Burglary	Larceny	MV Theft
Lewis	2017	260	35	0	22	0	13	225	77	142	6
	2018	206	31	0	16	1	14	175	50	117	8
	% change	-20.8%	-11.4%	NA	-27.3%	NA	7.7%	-22.2%	-35.1%	-17.6%	33.3%
Livingston	2017	809	56	0	24	6	26	753	77	648	28
	2018	633	58	0	23	5	30	575	61	493	21
	% change	-21.8%	3.6%	NA	-4.2%	-16.7%	15.4%	-23.6%	-20.8%	-23.9%	-25.0%
Madison	2017	984	104	1	46	14	43	880	153	703	24
	2018	936	134	1	64	5	64	802	108	661	33
	% change	-4.9%	28.8%	0.0%	39.1%	-64.3%	48.8%	-8.9%	-29.4%	-6.0%	37.5%
Monroe	2017	18,949	2,571	35	276	903	1,357	16,378	2,341	13,081	956
	2018	16,808	2,265	37	275	682	1,271	14,543	2,125	11,511	907
	% change	-11.3%	-11.9%	5.7%	-0.4%	-24.5%	-6.3%	-11.2%	-9.2%	-12.0%	-5.1%
Montgomery	2017	939	78	1	32	14	31	861	121	717	23
	2018	713	78	1	29	9	39	635	111	499	25
	% change	-24.1%	0.0%	0.0%	-9.4%	-35.7%	25.8%	-26.2%	-8.3%	-30.4%	8.7%
Nassau	2017	14,120	1,655	17	41	601	996	12,465	1,122	10,686	657
	2018	13,457	1,506	15	27	512	952	11,951	1,019	10,261	671
	% change	-4.7%	-9.0%	-11.8%	-34.1%	-14.8%	-4.4%	-4.1%	-9.2%	-4.0%	2.1%
New York	2017	47,146	8,671	46	530	2,749	5,346	38,475	2,215	35,622	638
	2018	49,830	8,951	31	640	2,731	5,549	40,879	2,455	37,682	742
	% change	5.7%	3.2%	-32.6%	20.8%	-0.7%	3.8%	6.2%	10.8%	5.8%	16.3%
Niagara	2017	5,458	767	3	83	197	484	4,691	844	3,571	276
	2018	4,241	594	3	86	151	354	3,647	507	2,866	274
	% change	-22.3%	-22.6%	0.0%	3.6%	-23.4%	-26.9%	-22.3%	-39.9%	-19.7%	-0.7%
Oneida	2017	4,778	695	4	204	109	378	4,083	666	3,288	129
	2018	4,642	644	7	193	105	339	3,998	608	3,231	159
	% change	-2.8%	-7.3%	75.0%	-5.4%	-3.7%	-10.3%	-2.1%	-8.7%	-1.7%	23.3%
Onondaga	2017	10,893	1,429	24	211	355	839	9,464	1,744	7,146	574
	2018	9,878	1,363	28	192	332	811	8,515	1,300	6,509	706
	% change	-9.3%	-4.6%	16.7%	-9.0%	-6.5%	-3.3%	-10.0%	-25.5%	-8.9%	23.0%
Ontario	2017	1,623	135	2	58	16	59	1,488	257	1,194	37
	2018	1,452	129	0	55	12	62	1,323	208	1,089	26
	% change	-10.5%	-4.4%	-100.0%	-5.2%	-25.0%	5.1%	-11.1%	-19.1%	-8.8%	-29.7%
Orange	2017	6,757	875	8	165	198	504	5,882	616	5,091	175
	2018	5,905	783	5	138	181	459	5,122	559	4,421	142
	% change	-12.6%	-10.5%	-37.5%	-16.4%	-8.6%	-8.9%	-12.9%	-9.3%	-13.2%	-18.9%

Appendix 6
New York State Index Crime Summary by County
2017 vs. 2018

County	Year	Total	Violent	Murder	Rape	Robbery	Agg. Assault	Property	Burglary	Larceny	MV Theft
Orleans	2017	763	86	0	19	10	57	677	88	569	20
	2018	594	64	0	18	8	38	530	104	407	19
	% change	-22.1%	-25.6%	NA	-5.3%	-20.0%	-33.3%	-21.7%	18.2%	-28.5%	-5.0%
Oswego	2017	1,980	218	1	96	17	104	1,762	406	1,282	74
	2018	2,030	188	2	78	21	87	1,842	264	1,498	80
	% change	2.5%	-13.8%	100.0%	-18.8%	23.5%	-16.3%	4.5%	-35.0%	16.8%	8.1%
Otsego	2017	733	93	4	45	2	42	640	116	509	15
	2018	716	95	0	42	3	50	621	108	499	14
	% change	-2.3%	2.2%	-100.0%	-6.7%	50.0%	19.0%	-3.0%	-6.9%	-2.0%	-6.7%
Putnam	2017	628	54	1	15	9	29	574	94	462	18
	2018	502	54	0	15	5	34	448	50	384	14
	% change	-20.1%	0.0%	-100.0%	0.0%	-44.4%	17.2%	-22.0%	-46.8%	-16.9%	-22.2%
Queens	2017	32,860	9,184	50	495	2,851	5,788	23,676	2,721	19,373	1,582
	2018	33,135	8,856	65	582	2,534	5,675	24,279	2,360	20,344	1,575
	% change	0.8%	-3.6%	30.0%	17.6%	-11.1%	-2.0%	2.5%	-13.3%	5.0%	-0.4%
Rensselaer	2017	3,517	448	6	69	127	246	3,069	558	2,377	134
	2018	3,092	388	1	62	109	216	2,704	425	2,149	130
	% change	-12.1%	-13.4%	-83.3%	-10.1%	-14.2%	-12.2%	-11.9%	-23.8%	-9.6%	-3.0%
Richmond	2017	5,969	1,451	13	90	328	1,020	4,518	401	3,883	234
	2018	5,738	1,408	10	128	327	943	4,330	342	3,803	185
	% change	-3.9%	-3.0%	-23.1%	42.2%	-0.3%	-7.5%	-4.2%	-14.7%	-2.1%	-20.9%
Rockland	2017	3,404	397	1	68	101	227	3,007	265	2,648	94
	2018	2,992	343	0	65	82	196	2,649	160	2,422	67
	% change	-12.1%	-13.6%	-100.0%	-4.4%	-18.8%	-13.7%	-11.9%	-39.6%	-8.5%	-28.7%
St Lawrence	2017	1,512	134	1	44	12	77	1,378	208	1,133	37
	2018	1,218	142	1	62	15	64	1,076	218	829	29
	% change	-19.4%	6.0%	0.0%	40.9%	25.0%	-16.9%	-21.9%	4.8%	-26.8%	-21.6%
Saratoga	2017	2,796	279	2	82	36	159	2,517	347	2,102	68
	2018	2,578	234	3	68	17	146	2,344	260	2,016	68
	% change	-7.8%	-16.1%	50.0%	-17.1%	-52.8%	-8.2%	-6.9%	-25.1%	-4.1%	0.0%
Schenectady	2017	4,598	672	2	78	164	428	3,926	525	3,180	221
	2018	4,607	716	1	74	155	486	3,891	498	3,120	273
	% change	0.2%	6.5%	-50.0%	-5.1%	-5.5%	13.6%	-0.9%	-5.1%	-1.9%	23.5%
Schoharie	2017	314	37	0	25	0	12	277	67	199	11
	2018	295	26	1	12	3	10	269	40	224	5
	% change	-6.1%	-29.7%	NA	-52.0%	NA	-16.7%	-2.9%	-40.3%	12.6%	-54.5%

Appendix 6
New York State Index Crime Summary by County
2017 vs. 2018

County	Year	Total Violent	Murder	Rape	Robbery	Agg. Assault	Property	Burglary	Larceny	MV Theft	
Schuyler	2017	70	15	0	11	0	4	55	13	40	2
	2018	60	15	0	5	0	10	45	5	36	4
	% change	-14.3%	0.0%	NA	-54.5%	NA	150.0%	-18.2%	-61.5%	-10.0%	100.0%
Seneca	2017	570	73	0	22	5	46	497	71	423	3
	2018	457	47	2	19	2	24	410	36	365	9
	% change	-19.8%	-35.6%	NA	-13.6%	-60.0%	-47.8%	-17.5%	-49.3%	-13.7%	200.0%
Steuben	2017	1,268	171	1	79	8	83	1,097	209	855	33
	2018	1,016	157	1	63	13	80	859	170	667	22
	% change	-19.9%	-8.2%	0.0%	-20.3%	62.5%	-3.6%	-21.7%	-18.7%	-22.0%	-33.3%
Suffolk	2017	21,461	1,748	22	161	537	1,028	19,713	1,679	16,928	1,106
	2018	19,385	1,382	21	79	423	859	18,003	1,209	15,831	963
	% change	-9.7%	-20.9%	-4.5%	-50.9%	-21.2%	-16.4%	-8.7%	-28.0%	-6.5%	-12.9%
Sullivan	2017	1,281	221	2	98	13	108	1,060	262	763	35
	2018	1,195	193	1	65	20	107	1,002	220	745	37
	% change	-6.7%	-12.7%	-50.0%	-33.7%	53.8%	-0.9%	-5.5%	-16.0%	-2.4%	5.7%
Tioga	2017	453	48	0	28	0	20	405	78	300	27
	2018	392	40	0	15	3	22	352	55	278	19
	% change	-13.5%	-16.7%	NA	-46.4%	NA	10.0%	-13.1%	-29.5%	-7.3%	-29.6%
Tompkins	2017	1,958	144	1	61	34	48	1,814	190	1,591	33
	2018	1,889	152	0	60	33	59	1,737	190	1,517	30
	% change	-3.5%	5.6%	-100.0%	-1.6%	-2.9%	22.9%	-4.2%	0.0%	-4.7%	-9.1%
Ulster	2017	2,562	289	2	64	40	183	2,273	311	1,895	67
	2018	2,246	280	4	92	22	162	1,966	288	1,597	81
	% change	-12.3%	-3.1%	100.0%	43.8%	-45.0%	-11.5%	-13.5%	-7.4%	-15.7%	20.9%
Warren	2017	1,079	107	3	44	10	50	972	131	818	23
	2018	952	96	1	50	7	38	856	70	771	15
	% change	-11.8%	-10.3%	-66.7%	13.6%	-30.0%	-24.0%	-11.9%	-46.6%	-5.7%	-34.8%
Washington	2017	506	79	2	39	3	35	427	72	339	16
	2018	419	71	1	33	5	32	348	67	267	14
	% change	-17.2%	-10.1%	-50.0%	-15.4%	66.7%	-8.6%	-18.5%	-6.9%	-21.2%	-12.5%
Wayne	2017	1,492	187	3	79	18	87	1,305	242	1,020	43
	2018	1,442	170	5	72	12	81	1,272	246	987	39
	% change	-3.4%	-9.1%	66.7%	-8.9%	-33.3%	-6.9%	-2.5%	1.7%	-3.2%	-9.3%
Westchester	2017	11,579	1,953	19	136	600	1,198	9,626	1,010	8,030	586
	2018	9,651	1,670	15	123	445	1,087	7,981	812	6,712	457
	% change	-16.7%	-14.5%	-21.1%	-9.6%	-25.8%	-9.3%	-17.1%	-19.6%	-16.4%	-22.0%

Appendix 6
New York State Index Crime Summary by County
2017 vs. 2018

County	Year	Total	Violent	Murder	Rape	Robbery	Agg. Assault	Property	Burglary	Larceny	MV Theft
Wyoming	2017	346	71	0	25	5	41	275	58	203	14
	2018	333	63	1	13	2	47	270	41	221	8
	% change	-3.8%	-11.3%	NA	-48.0%	-60.0%	14.6%	-1.8%	-29.3%	8.9%	-42.9%
Yates	2017	259	26	0	12	0	14	233	42	188	3
	2018	245	17	1	4	0	12	228	52	171	5
	% change	-5.4%	-34.6%	NA	-66.7%	NA	-14.3%	-2.1%	23.8%	-9.0%	66.7%

Notes: NA indicates that the percentage change is not applicable because the count in 2017 was zero.

Index and violent crime totals for 2017 and 2018 include the number of rapes reported under the expanded definition.