



# New York State Crime Report

Andrew M. Cuomo  
Governor

Michael C. Green  
Executive Deputy Commissioner

September 2018

## Crime in New York State 2017 Final Data

New York State and the FBI use seven Index crime categories as indicators of overall crime trends: murder, rape, robbery, and aggravated assault, which are classified as violent crimes; and the property crimes of burglary, larceny and motor vehicle theft. The FBI created these categories to allow for uniform crime reporting across all 50 states. This report details 2017 Index crime in New York State, its 62 counties and two regions: New York City and the 57 counties outside of the five boroughs (Rest of State).

Police departments and sheriffs' offices report Index crime to the Division of Criminal Justice Services (DCJS) through the Uniform Crime Reporting and Incident-Based Reporting programs. This report also details Index crime rates per 100,000 population statewide and by county and region. DCJS uses county population data from the FBI, which is based on U.S. Census estimates, to calculate those crime rates.

New York State implemented the FBI's expanded definition of rape in 2015; this resulted in an uptick in violent crime and reported rapes in that year when compared to prior years. As a result, caution should be used when citing or interpreting any percentage changes between rapes reported in 2015 and any subsequent year, to those reported in 2014 and earlier.

The FBI [made the change](#) to more accurately reflect the scope and volume of sexual assaults nationwide. Before the implementation, those offenses would have been classified by the FBI and state as Part II sex offenses.

This report compares Index and violent crime over the 10-year period from 2008 through 2017, but it *does not* include percentage change comparisons between rape statistics reported in 2008 vs. 2017 because of the expanded definition.

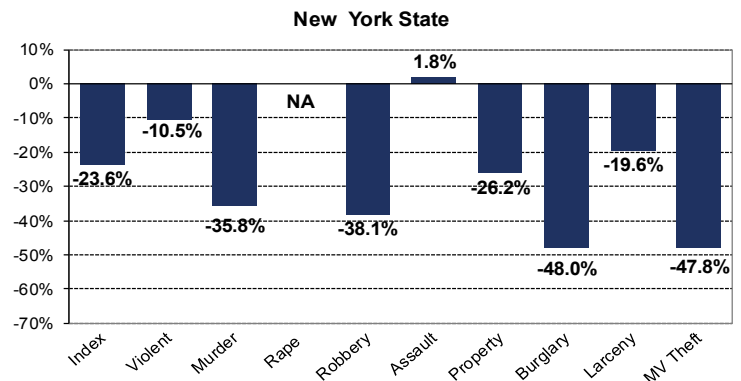
Index crimes reported by police departments and sheriffs' offices to DCJS annually from 2013 to 2017 are online: [www.criminaljustice.ny.gov](http://www.criminaljustice.ny.gov)

Reported Index crime in New York State declined for the fifth consecutive year in 2017, with 361,510 Index crimes reported, the fewest since statewide reporting began in 1975. The number of homicides also was the lowest on record since reporting began: 547 statewide.

This historic low in reported Index crime, combined with an increase in the state's population by nearly 450,000 residents in the past decade, resulted in New York's Index crime rate declining by 24 percent between 2008 and 2017.

During that 10-year period, the violent crime rate decreased 11 percent and the property crime rate declined 26 percent. Appendix 1 has additional details.

Percentage Change in Crime Rates  
2008 vs. 2017

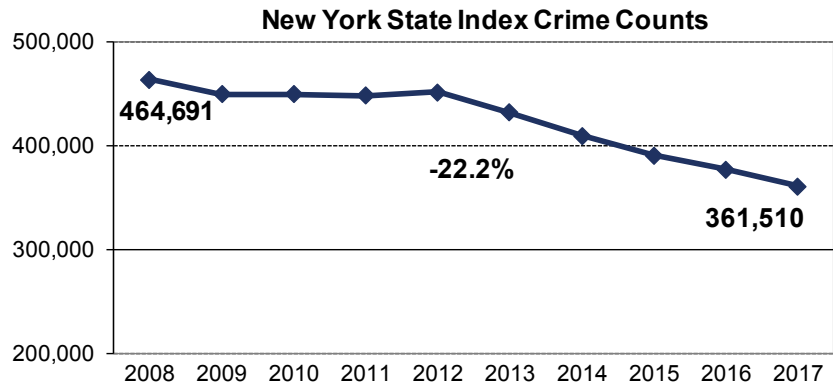


## Change in Crime Volume: 2008 vs. 2017

Between 2008 and 2017 index crime declined with 103,181 fewer crimes reported.

This represents a 22.2 percent reduction in the volume of reported crime over that 10-year period.

Reported Index crime also has declined annually since 2012.



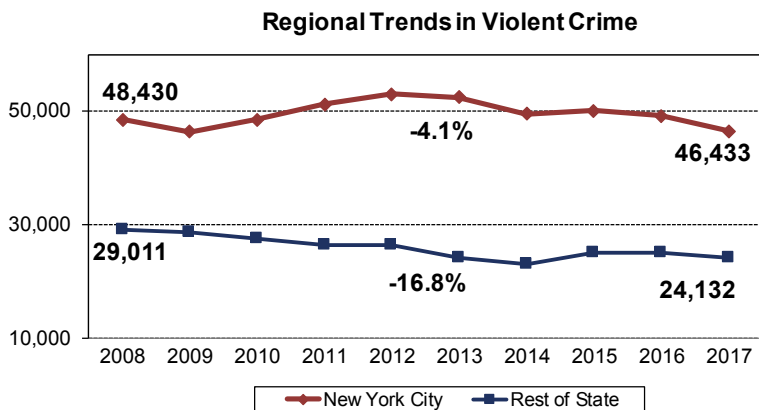
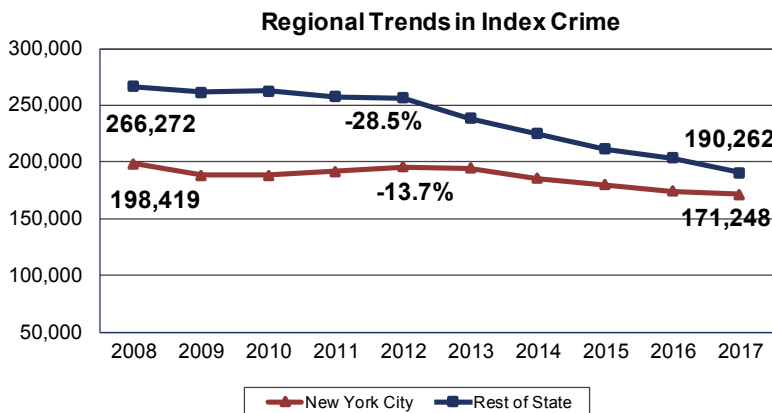
## Trends in Regional Crime: 2008 to 2017

Index crimes in the state's two regions — New York City (five counties, also referred to as boroughs) and Rest of State (57 counties) — declined when comparing 2008 to 2017.

Between 2008 and 2017, reported Index crime declined 13.7 percent in New York City and 28.5 percent in the Rest of State. During the same time period, the decrease in violent crime in the 57 counties was more than four times greater than in New York City: 16.8 percent vs. 4.1 percent.

Index crime has decreased annually in New York City since 2012, while it has declined every year since 2010 in the Rest of State.

As noted, New York State's implementation of the FBI's expanded definition of rape resulted in an uptick in violent crime in both regions from 2014 to 2015. This change resulted in 3,751 additional crimes being classified as rape; prior to the change, those offenses would have been classified by the FBI and state as Part II sex offenses.



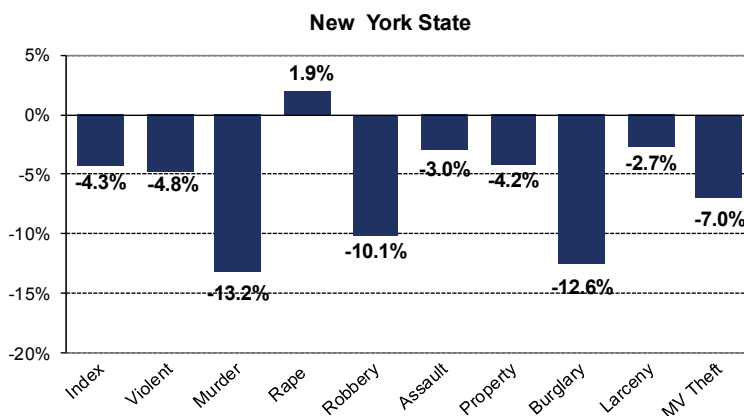
## Statewide Crime Trends: 2016 vs. 2017

The number of Index crimes reported in New York State decreased 4.3 percent in 2017 as compared to the previous year.

Six of the seven Index crimes declined, with the largest reductions occurring in murder (-13.2%), burglary (-12.6%) and robbery (-10.1%). There were 547 murders reported in 2017, the lowest number recorded since statewide reporting began in 1975.

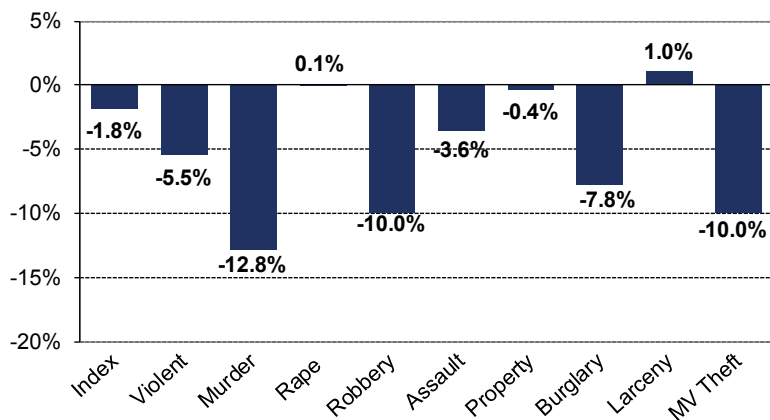
Violent crime decreased by 4.8 percent, with decreases reported in three of the four categories. Rape increased slightly (+1.9%). Property crime decreased by 4.2 percent. All three property crime categories declined.

Percentage Change in Crime Volume  
2016 vs. 2017



## Regional Crime Trends: 2016 vs. 2017

New York City



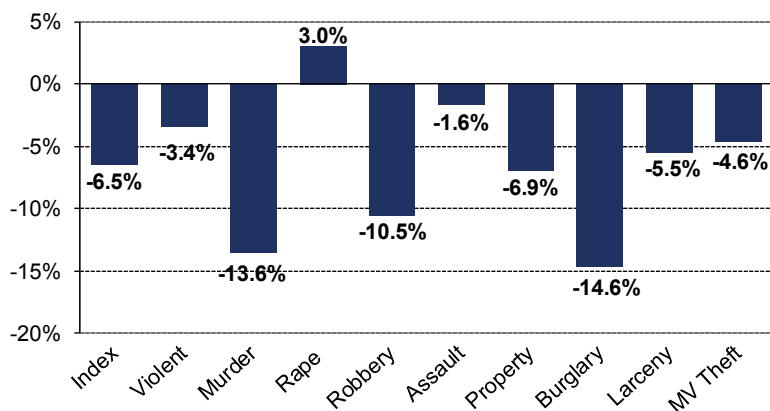
### New York City

Index crimes decreased by 1.8 percent in 2017 due to decreases in five of the seven crime categories.

A significant reduction in murder and robbery contributed to the decrease in violent crime. New York City reported 292 murders last year, the fewest ever and a 12.8 percent decline from 2016. Robbery declined by 10 percent.

Aggravated assaults (-3.6%), motor vehicle theft (-10%) and burglary (-7.8%) also decreased, while larceny (+1%) and rapes (+0.1%) increased slightly.

Rest of State



### Rest of State

The Rest of State saw a larger decline in reported crime than New York City, down 6.5 percent when compared to 2016. The decrease was driven by reductions in six of the seven index crimes. Murders decreased 13.6 percent with 255 reported. This is the lowest number reported since 1999 (rest of state also reported 255 murders in 2011).

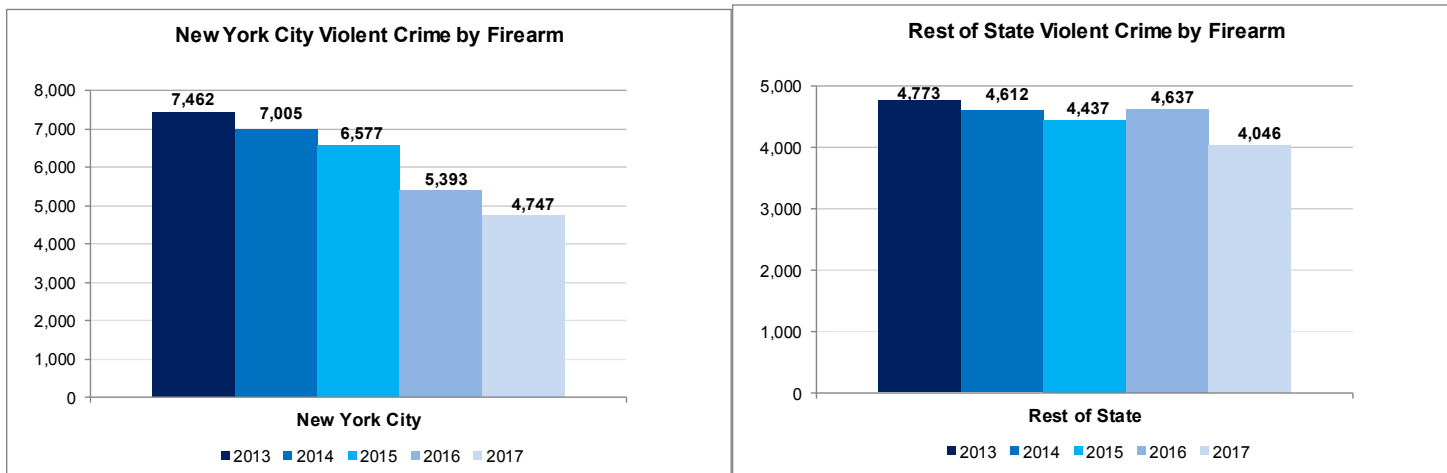
Burglary decreased 14.6 percent; robbery, 10.5 percent; larceny, 5.5 percent; motor-vehicle theft, 4.6 percent; and aggravated assault, 1.6 percent. Appendix 3 lists crime rates by county for 2016 and Appendix 6 details crime counts by county for 2016 vs. 2017.

## Trends in Violent Crimes by Firearm 2013 vs. 2017

Police departments and sheriffs' offices in New York State report the number of violent crimes that involved the use of a firearm.

In New York City, violent crimes involving firearms have decreased dramatically: a 36 percent decrease since 2013. Violent crimes involving a firearm in the 57 counties outside of New York City decreased by 15 percent since 2013.

Between 2015 and 2016, violent crime by firearm increased in the rest of state by 4.5 percent, followed by a sharp decline of 13 percent between 2016 and 2017. In 2017, the Rest of State reported 4,046 violent crimes involving a firearm: the lowest number reported since 1989.



## Regional Trends in Homicide 2016 vs. 2017

The number of homicides reached a historic low in 2017, with 547 reported in New York State, which is the fewest since statewide reporting began in 1975. Homicides decreased 13.2 percent statewide, with decreases reported in both regions of the state. Homicides in New York City declined 12.8 percent (292 vs. 335) while homicides in Rest of State decreased 13.6 percent (255 vs. 295). Appendices 1 and 2 include more details.

Since 2008, total homicides statewide have decreased 34.6 percent and homicides involving a firearm declined 37.8 percent. The number of homicides by firearm was 294 in 2017, which is the first time that number has been below 300 since statewide reporting began in 1975.

New York State Homicides 2008 - 2017											% Change	
	2008	2009	2010	2011	2012	2013	2014	2015	2016	2017	2016-17	2008-17
<b>New York State</b>												
<b>Total Homicide</b>	<b>836</b>	<b>784</b>	<b>866</b>	<b>770</b>	<b>688</b>	<b>645</b>	<b>616</b>	<b>620</b>	<b>630</b>	<b>547</b>	<b>-13.2%</b>	<b>-34.6%</b>
Non-Firearm Related	363	301	344	322	277	279	267	234	262	253	-3.4%	-30.3%
Firearm Related	473	483	522	448	411	366	349	386	368	294	-20.1%	-37.8%
<b>New York City</b>												
<b>Total Homicide</b>	<b>523</b>	<b>471</b>	<b>536</b>	<b>515</b>	<b>419</b>	<b>335</b>	<b>333</b>	<b>352</b>	<b>335</b>	<b>292</b>	<b>-12.8%</b>	<b>-44.2%</b>
Non-Firearm Related	229	169	213	200	178	141	145	117	132	139	5.3%	-39.3%
Firearm Related	294	302	323	315	241	194	188	235	203	153	-24.6%	-48.0%
<b>Rest of State</b>												
<b>Total Homicide</b>	<b>313</b>	<b>313</b>	<b>330</b>	<b>255</b>	<b>269</b>	<b>310</b>	<b>283</b>	<b>268</b>	<b>295</b>	<b>255</b>	<b>-13.6%</b>	<b>-18.5%</b>
Non-Firearm Related	134	132	131	122	99	138	122	117	130	114	-12.3%	-14.9%
Firearm Related	179	181	199	133	170	172	161	151	165	141	-14.5%	-21.2%

## Appendices 1 through 6

Data Source: DCJS, Uniform Crime Reporting File; includes all reports received by the agency as of September 4, 2018.

The increase in violent crime and rape between 2014 and 2015 is attributable to New York State's implementation of the FBI's [expanded definition](#) of rape.

**Note:** *The data included in this report are more current than data included in the FBI's "Crime in the United States 2017" report, issued September 24, 2018. New York and other states provide data for that report to the FBI early in the year, when data are still preliminary. The FBI also includes data estimates in its report; New York State does not.*

## Appendix 1

## New York State Index Crime Counts and Rates per 100,000 Population: 2008 - 2017

Counts	2008	2009	2010	2011	2012	2013	2014	2015	2016	2017	% change	
											2016-17	2008-17
<b>Index Crime</b>	<b>464,691</b>	<b>449,970</b>	<b>450,430</b>	<b>448,909</b>	<b>452,365</b>	<b>432,678</b>	<b>410,170</b>	<b>391,416</b>	<b>377,855</b>	<b>361,510</b>	<b>-4.3%</b>	<b>-22.2%</b>
<b>Violent Crime</b>	<b>77,441</b>	<b>74,830</b>	<b>75,836</b>	<b>77,464</b>	<b>79,304</b>	<b>76,480</b>	<b>72,367</b>	<b>75,156</b>	<b>74,115</b>	<b>70,565</b>	<b>-4.8%</b>	<b>-8.9%</b>
Murder	836	784	866	770	688	645	616	620	630	547	-13.2%	-34.6%
Rape	2,787	2,565	2,766	2,773	2,831	2,616	2,539	6,149	6,243	6,363	1.9%	N/A
Robbery	31,743	28,063	28,405	28,351	28,555	27,179	23,994	23,888	22,283	20,026	-10.1%	-36.9%
Agg. Assault	42,075	43,418	43,799	45,570	47,230	46,040	45,218	44,499	44,959	43,629	-3.0%	3.7%
<b>Property Crime</b>	<b>387,250</b>	<b>375,140</b>	<b>374,594</b>	<b>371,445</b>	<b>373,061</b>	<b>356,198</b>	<b>337,803</b>	<b>316,260</b>	<b>303,740</b>	<b>290,945</b>	<b>-4.2%</b>	<b>-24.9%</b>
Burglary	65,514	62,677	64,695	65,089	64,080	56,173	50,663	44,068	39,717	34,727	-12.6%	-47.0%
Larceny	296,639	290,680	289,490	287,701	291,779	284,518	271,407	256,851	249,692	242,888	-2.7%	-18.1%
MV Theft	25,097	21,783	20,409	18,655	17,202	15,507	15,733	15,341	14,331	13,330	-7.0%	-46.9%
											% change	
Rates per 100,000 Pop.	2008	2009	2010	2011	2012	2013	2014	2015	2016	2017	2016-17	2008-17
<b>Index Crime</b>	<b>2,384.7</b>	<b>2,303.1</b>	<b>2,324.9</b>	<b>2,306.8</b>	<b>2,312.0</b>	<b>2,202.3</b>	<b>2,077.7</b>	<b>1,977.7</b>	<b>1,914.1</b>	<b>1,821.7</b>	<b>-4.8%</b>	<b>-23.6%</b>
<b>Violent Crime</b>	<b>397.4</b>	<b>383.0</b>	<b>391.4</b>	<b>398.1</b>	<b>405.3</b>	<b>389.3</b>	<b>366.6</b>	<b>379.7</b>	<b>375.4</b>	<b>355.6</b>	<b>-5.3%</b>	<b>-10.5%</b>
Murder	4.3	4.0	4.5	4.0	3.5	3.3	3.1	3.1	3.2	2.8	-13.6%	-35.8%
Rape	14.3	13.1	14.3	14.2	14.5	13.3	12.9	31.1	31.6	32.1	1.4%	N/A
Robbery	162.9	143.6	146.6	145.7	145.9	138.3	121.5	120.7	112.9	100.9	-10.6%	-38.1%
Agg. Assault	215.9	222.2	226.1	234.2	241.4	234.3	229.0	224.8	227.7	219.8	-3.5%	1.8%
<b>Property Crime</b>	<b>1,987.3</b>	<b>1,920.1</b>	<b>1,933.5</b>	<b>1,908.7</b>	<b>1,906.7</b>	<b>1,813.0</b>	<b>1,711.1</b>	<b>1,598.0</b>	<b>1,538.6</b>	<b>1,466.1</b>	<b>-4.7%</b>	<b>-26.2%</b>
Burglary	336.2	320.8	333.9	334.5	327.5	285.9	256.6	222.7	201.2	175.0	-13.0%	-48.0%
Larceny	1,522.3	1,487.8	1,494.2	1,478.4	1,491.3	1,448.2	1,374.8	1,297.8	1,264.8	1,223.9	-3.2%	-19.6%
MV Theft	128.8	111.5	105.3	95.9	87.9	78.9	79.7	77.5	72.6	67.2	-7.5%	-47.8%

## Appendix 2

## New York State Index Crime Summary by Region: 2008 - 2017

New York City	2008	2009	2010	2011	2012	2013	2014	2015	2016	2017	% change	
											2016-17	2008-17
<b>Index Crime</b>	<b>198,419</b>	<b>188,357</b>	<b>188,104</b>	<b>191,666</b>	<b>195,753</b>	<b>194,355</b>	<b>185,191</b>	<b>179,948</b>	<b>174,402</b>	<b>171,248</b>	<b>-1.8%</b>	<b>-13.7%</b>
<b>Violent Crime</b>	<b>48,430</b>	<b>46,357</b>	<b>48,489</b>	<b>51,209</b>	<b>52,993</b>	<b>52,384</b>	<b>49,444</b>	<b>50,088</b>	<b>49,124</b>	<b>46,433</b>	<b>-5.5%</b>	<b>-4.1%</b>
Murder	523	471	536	515	419	335	333	352	335	292	-12.8%	-44.2%
Rape	890	832	1,036	1,092	1,162	1,112	1,070	2,244	2,372	2,375	0.1%	N/A
Robbery	22,186	18,597	19,608	19,773	20,201	19,170	16,581	16,946	15,544	13,995	-10.0%	-36.9%
Agg. Assault	24,831	26,457	27,309	29,829	31,211	31,767	31,460	30,546	30,873	29,771	-3.6%	19.9%
<b>Property Crime</b>	<b>149,989</b>	<b>142,000</b>	<b>139,615</b>	<b>140,457</b>	<b>142,760</b>	<b>141,971</b>	<b>135,747</b>	<b>129,860</b>	<b>125,278</b>	<b>124,815</b>	<b>-0.4%</b>	<b>-16.8%</b>
Burglary	19,867	18,780	17,926	18,159	18,635	16,606	15,916	14,098	12,041	11,104	-7.8%	-44.1%
Larceny	117,682	112,526	111,370	112,864	115,935	117,931	112,107	108,376	106,868	107,976	1.0%	-8.2%
MV Theft	12,440	10,694	10,319	9,434	8,190	7,434	7,724	7,386	6,369	5,735	-10.0%	-53.9%
											% change	
Rest of State	2008	2009	2010	2011	2012	2013	2014	2015	2016	2017	2016-17	2008-17
<b>Index Crime</b>	<b>266,272</b>	<b>261,613</b>	<b>262,326</b>	<b>257,243</b>	<b>256,612</b>	<b>238,323</b>	<b>224,979</b>	<b>211,468</b>	<b>203,453</b>	<b>190,262</b>	<b>-6.5%</b>	<b>-28.5%</b>
<b>Violent Crime</b>	<b>29,011</b>	<b>28,473</b>	<b>27,347</b>	<b>26,255</b>	<b>26,311</b>	<b>24,096</b>	<b>22,923</b>	<b>25,068</b>	<b>24,991</b>	<b>24,132</b>	<b>-3.4%</b>	<b>-16.8%</b>
Murder	313	313	330	255	269	310	283	268	295	255	-13.6%	-18.5%
Rape	1,897	1,733	1,730	1,681	1,669	1,504	1,469	3,905	3,871	3,988	3.0%	N/A
Robbery	9,557	9,466	8,797	8,578	8,354	8,009	7,413	6,942	6,739	6,031	-10.5%	-36.9%
Agg. Assault	17,244	16,961	16,490	15,741	16,019	14,273	13,758	13,953	14,086	13,858	-1.6%	-19.6%
<b>Property Crime</b>	<b>237,261</b>	<b>233,140</b>	<b>234,979</b>	<b>230,988</b>	<b>230,301</b>	<b>214,227</b>	<b>202,056</b>	<b>186,400</b>	<b>178,462</b>	<b>166,130</b>	<b>-6.9%</b>	<b>-30.0%</b>
Burglary	45,647	43,897	46,769	46,930	45,445	39,567	34,747	29,970	27,676	23,623	-14.6%	-48.2%
Larceny	178,957	178,154	178,120	174,837	175,844	166,587	159,300	148,475	142,824	134,912	-5.5%	-24.6%
MV Theft	12,657	11,089	10,090	9,221	9,012	8,073	8,009	7,955	7,962	7,595	-4.6%	-40.0%

Note: The increase in violent crime and rape between 2014 and 2015 is attributable to New York State's implementation of the FBI's [expanded definition](#) of rape.

Appendix 3  
**New York State Index Crime Summary by County: 2017**  
**Rates per 100,000 Population**

County	Crime Rate			County	Crime Rate		
	Index	Violent	Property		Index	Violent	Property
Albany	2,828.1	374.1	2,454.0	Onondaga	2,332.4	306.0	2,026.4
Allegany	1,081.5	168.5	913.0	Ontario	1,469.9	122.3	1,347.5
Bronx	2,415.3	852.6	1,562.7	Orange	1,768.6	229.4	1,539.2
Broome	2,856.5	356.0	2,500.5	Orleans	1,852.2	208.8	1,643.4
Cattaraugus	1,531.5	173.3	1,358.3	Oswego	1,667.5	183.6	1,483.9
Cayuga	1,725.6	305.0	1,420.6	Otsego	1,222.2	155.3	1,066.9
Chautauqua	2,160.7	268.3	1,892.3	Putnam	634.5	54.6	580.0
Chemung	1,820.3	166.1	1,654.2	Queens	1,394.2	389.7	1,004.6
Chenango	1,415.4	167.4	1,248.0	Rensselaer	2,188.0	278.4	1,909.6
Clinton	1,497.0	167.7	1,329.3	Richmond	1,245.9	302.9	943.0
Columbia	1,595.5	222.1	1,373.4	Rockland	1,031.6	120.3	911.3
Cortland	2,071.4	102.1	1,969.3	St Lawrence	1,374.6	121.8	1,252.8
Delaware	1,169.4	132.7	1,036.7	Saratoga	1,221.8	122.0	1,099.9
Dutchess	1,301.4	192.8	1,108.6	Schenectady	2,965.5	433.3	2,532.2
Erie	2,530.8	375.0	2,155.8	Schoharie	1,007.5	118.7	888.8
Essex	1,148.2	172.6	975.6	Schuyler	386.6	82.8	303.8
Franklin	1,367.1	198.7	1,168.4	Seneca	1,633.2	209.9	1,423.3
Fulton	2,029.7	220.3	1,809.3	Steuben	1,304.4	176.6	1,127.8
Genesee	1,960.4	288.4	1,672.0	Suffolk	1,373.5	113.2	1,260.3
Greene	1,334.7	289.3	1,045.4	Sullivan	1,717.1	296.5	1,420.6
Hamilton	799.1	88.8	710.3	Tioga	940.1	99.0	841.1
Herkimer	1,801.2	248.2	1,553.0	Tompkins	1,845.0	131.6	1,713.4
Jefferson	1,978.8	206.4	1,772.4	Ulster	1,423.7	160.8	1,262.9
Kings	1,880.2	551.3	1,328.9	Warren	1,672.1	165.8	1,506.3
Lewis	955.6	130.1	825.5	Washington	815.4	124.8	690.5
Livingston	1,259.3	87.2	1,172.1	Wayne	1,642.7	205.5	1,437.3
Madison	1,381.7	146.2	1,235.5	Westchester	1,179.8	198.6	981.2
Monroe	2,526.4	342.7	2,183.6	Wyoming	850.8	174.6	676.2
Montgomery	1,905.7	158.5	1,747.2	Yates	1,039.7	104.4	935.4
Nassau	1,024.6	120.6	904.0				
New York	2,834.1	521.3	2,312.9	New York City	1,987.5	538.9	1,448.6
Niagara	2,579.7	362.2	2,217.4	Rest of State	1,694.4	214.9	1,479.5
Oneida	2,065.2	300.3	1,764.9	New York State	1,821.7	355.6	1,466.1

Appendix 4  
**Violent Crime by Firearm**  
**2013 - 2017**

	New York City					% Change	
	2013	2014	2015	2016	2017	2016-17	2013-17
<b>Violent Crime</b>	<b>52,384</b>	<b>49,444</b>	<b>50,088</b>	<b>49,124</b>	<b>46,433</b>	<b>-5.5%</b>	<b>-11.4%</b>
<b>Firearm Related</b>	<b>7,462</b>	<b>7,005</b>	<b>6,577</b>	<b>5,393</b>	<b>4,747</b>	<b>-12.0%</b>	<b>-36.4%</b>
<b>Percent Firearm Related</b>	<b>14.2%</b>	<b>14.2%</b>	<b>13.1%</b>	<b>11.0%</b>	<b>10.2%</b>		
Murder	335	333	352	335	292	-12.8%	-12.8%
Firearm Related	194	188	235	203	153	-24.6%	-21.1%
Percent Firearm Related	57.9%	56.5%	66.8%	60.6%	52.4%		
Rape	1,112	1,070	2,244	2,372	2,375	0.1%	N/A
Firearm Related	28	30	18	20	19	-5.0%	N/A
Percent Firearm Related	2.5%	2.8%	0.8%	0.8%	0.8%		
Robbery	19,170	16,581	16,946	15,544	13,995	-10.0%	-27.0%
Firearm Related	4,022	3,415	3,308	2,556	2,151	-15.8%	-46.5%
Percent Firearm Related	21.0%	20.6%	19.5%	16.4%	15.4%		
Agg Assault	31,767	31,460	30,546	30,873	29,771	-3.6%	-6.3%
Firearm Related	3,218	3,372	3,016	2,614	2,424	-7.3%	-24.7%
Percent Firearm Related	10.1%	10.7%	9.9%	8.5%	8.1%		

	Rest of State					% Change	
	2013	2014	2015	2016	2017	2016-17	2013-17
<b>Violent Crime</b>	<b>24,096</b>	<b>22,923</b>	<b>25,068</b>	<b>24,991</b>	<b>24,132</b>	<b>-3.4%</b>	<b>0.1%</b>
<b>Firearm Related</b>	<b>4,773</b>	<b>4,612</b>	<b>4,437</b>	<b>4,637</b>	<b>4,046</b>	<b>-12.7%</b>	<b>-15.2%</b>
<b>Percent Firearm Related</b>	<b>19.8%</b>	<b>20.1%</b>	<b>17.7%</b>	<b>18.6%</b>	<b>16.8%</b>		
Murder	310	283	268	295	255	-13.6%	-17.7%
Firearm Related	172	161	151	165	141	-14.5%	-18.0%
Percent Firearm Related	55.5%	56.9%	56.3%	55.9%	55.3%		
Rape	1,504	1,469	3,905	3,871	3,988	3.0%	N/A
Firearm Related	32	27	13	17	19	11.8%	N/A
Percent Firearm Related	2.1%	1.8%	0.3%	0.4%	0.5%		
Robbery	8,009	7,413	6,942	6,739	6,031	-10.5%	-24.7%
Firearm Related	2,439	2,283	2,066	2,114	1,670	-21.0%	-31.5%
Percent Firearm Related	30.5%	30.8%	29.8%	31.4%	27.7%		
Agg Assault	14,273	13,758	13,953	14,086	13,858	-1.6%	-2.9%
Firearm Related	2,130	2,141	2,207	2,341	2,216	-5.3%	4.0%
Percent Firearm Related	14.9%	15.6%	15.8%	16.6%	16.0%		

Note: Due to the expanded definition of rape, percent change comparison for rape statistics reported in 2013 vs. 2017 is not shown.



Appendix 5  
**Homicides and Homicides by Firearm**  
**2008 - 2017**

Year	New York City		Rest of State		New York State	
	Homicides	Firearm Related	Homicides	Firearm Related	Homicides	Firearm Related
2008	523	294	313	179	836	473
2009	471	302	313	181	784	483
2010	536	323	330	199	866	522
2011	515	315	255	133	770	448
2012	419	241	269	170	688	411
2013	335	194	310	172	645	366
2014	333	188	283	161	616	349
2015	352	235	268	151	620	386
2016	335	203	295	165	630	368
2017	292	153	255	141	547	294
<b>2008 vs. 2017 % Change</b>	-44.2%	-48.0%	-18.5%	-21.2%	-34.6%	-37.8%

Appendix 6  
**New York State Index Crime Summary by County**  
 2016 vs. 2017

County	Year	Total	Violent	Murder	Rape	Robbery	Agg. Assault	Property	Burglary	Larceny	MV Theft
Albany	2016	<b>8,767</b>	<b>1,099</b>	5	107	293	694	<b>7,668</b>	900	6,556	212
	2017	<b>8,777</b>	<b>1,161</b>	8	116	313	724	<b>7,616</b>	787	6,607	222
	% change	<b>0.1%</b>	<b>5.6%</b>	60.0%	8.4%	6.8%	4.3%	<b>-0.7%</b>	-12.6%	0.8%	4.7%
Allegany	2016	<b>571</b>	<b>81</b>	0	36	0	45	<b>490</b>	120	348	22
	2017	<b>507</b>	<b>79</b>	2	33	3	41	<b>428</b>	80	334	14
	% change	<b>-11.2%</b>	<b>-2.5%</b>	NA	-8.3%	NA	-8.9%	<b>-12.7%</b>	-33.3%	-4.0%	-36.4%
Bronx	2016	<b>36,834</b>	<b>13,817</b>	98	615	4,297	8,807	<b>23,017</b>	2,459	19,191	1,367
	2017	<b>35,507</b>	<b>12,534</b>	72	551	3,570	8,341	<b>22,973</b>	2,108	19,509	1,356
	% change	<b>-3.6%</b>	<b>-9.3%</b>	-26.5%	-10.4%	-16.9%	-5.3%	<b>-0.2%</b>	-14.3%	1.7%	-0.8%
Broome	2016	<b>5,422</b>	<b>641</b>	5	128	143	365	<b>4,781</b>	991	3,601	189
	2017	<b>5,568</b>	<b>694</b>	4	150	138	402	<b>4,874</b>	786	3,944	144
	% change	<b>2.7%</b>	<b>8.3%</b>	-20.0%	17.2%	-3.5%	10.1%	<b>1.9%</b>	-20.7%	9.5%	-23.8%
Cattaraugus	2016	<b>1,232</b>	<b>138</b>	0	56	8	74	<b>1,094</b>	204	844	46
	2017	<b>1,158</b>	<b>131</b>	2	48	12	69	<b>1,027</b>	189	805	33
	% change	<b>-6.0%</b>	<b>-5.1%</b>	NA	-14.3%	50.0%	-6.8%	<b>-6.1%</b>	-7.4%	-4.6%	-28.3%
Cayuga	2016	<b>1,427</b>	<b>184</b>	1	64	17	102	<b>1,243</b>	241	971	31
	2017	<b>1,341</b>	<b>237</b>	1	77	21	138	<b>1,104</b>	179	900	25
	% change	<b>-6.0%</b>	<b>28.8%</b>	0.0%	20.3%	23.5%	35.3%	<b>-11.2%</b>	-25.7%	-7.3%	-19.4%
Chautauqua	2016	<b>3,327</b>	<b>356</b>	4	84	65	203	<b>2,971</b>	727	2,139	105
	2017	<b>2,786</b>	<b>346</b>	3	65	57	221	<b>2,440</b>	513	1,845	82
	% change	<b>-16.3%</b>	<b>-2.8%</b>	-25.0%	-22.6%	-12.3%	8.9%	<b>-17.9%</b>	-29.4%	-13.7%	-21.9%
Chemung	2016	<b>2,064</b>	<b>172</b>	3	28	38	103	<b>1,892</b>	270	1,577	45
	2017	<b>1,567</b>	<b>143</b>	4	28	32	79	<b>1,424</b>	185	1,205	34
	% change	<b>-24.1%</b>	<b>-16.9%</b>	33.3%	0.0%	-15.8%	-23.3%	<b>-24.7%</b>	-31.5%	-23.6%	-24.4%
Chenango	2016	<b>966</b>	<b>99</b>	0	51	7	41	<b>867</b>	172	685	10
	2017	<b>685</b>	<b>81</b>	3	45	3	30	<b>604</b>	116	478	10
	% change	<b>-29.1%</b>	<b>-18.2%</b>	NA	-11.8%	-57.1%	-26.8%	<b>-30.3%</b>	-32.6%	-30.2%	0.0%
Clinton	2016	<b>1,395</b>	<b>135</b>	0	67	4	64	<b>1,260</b>	201	1,040	19
	2017	<b>1,214</b>	<b>136</b>	0	66	8	62	<b>1,078</b>	171	884	23
	% change	<b>-13.0%</b>	<b>0.7%</b>	NA	-1.5%	100.0%	-3.1%	<b>-14.4%</b>	-14.9%	-15.0%	21.1%
Columbia	2016	<b>834</b>	<b>100</b>	0	40	6	54	<b>734</b>	134	589	11
	2017	<b>970</b>	<b>135</b>	1	40	11	83	<b>835</b>	139	668	28
	% change	<b>16.3%</b>	<b>35.0%</b>	NA	0.0%	83.3%	53.7%	<b>13.8%</b>	3.7%	13.4%	154.5%
Cortland	2016	<b>820</b>	<b>43</b>	1	19	2	21	<b>777</b>	154	616	7
	2017	<b>994</b>	<b>49</b>	0	28	10	11	<b>945</b>	165	766	14
	% change	<b>21.2%</b>	<b>14.0%</b>	-100.0%	47.4%	400.0%	-47.6%	<b>21.6%</b>	7.1%	24.4%	100.0%

Appendix 6  
**New York State Index Crime Summary by County**  
 2016 vs. 2017

County	Year	Total Violent	Murder	Rape	Robbery	Agg. Assault	Property	Burglary	Larceny	MV Theft	
Delaware	2016	<b>671</b>	<b>98</b>	0	43	5	50	<b>573</b>	140	422	11
	2017	<b>520</b>	<b>59</b>	0	32	2	25	<b>461</b>	103	346	12
	% change	<b>-22.5%</b>	<b>-39.8%</b>	NA	-25.6%	-60.0%	-50.0%	<b>-19.5%</b>	-26.4%	-18.0%	9.1%
Dutchess	2016	<b>4,116</b>	<b>566</b>	4	111	114	337	<b>3,550</b>	481	2,991	78
	2017	<b>3,834</b>	<b>568</b>	5	106	109	348	<b>3,266</b>	405	2,781	80
	% change	<b>-6.9%</b>	<b>0.4%</b>	25.0%	-4.5%	-4.4%	3.3%	<b>-8.0%</b>	-15.8%	-7.0%	2.6%
Erie	2016	<b>25,817</b>	<b>3,792</b>	51	305	1,288	2,148	<b>22,025</b>	4,153	16,692	1,180
	2017	<b>23,371</b>	<b>3,463</b>	46	251	1,111	2,055	<b>19,908</b>	3,755	15,013	1,140
	% change	<b>-9.5%</b>	<b>-8.7%</b>	-9.8%	-17.7%	-13.7%	-4.3%	<b>-9.6%</b>	-9.6%	-10.1%	-3.4%
Essex	2016	<b>395</b>	<b>57</b>	0	22	1	34	<b>338</b>	99	231	8
	2017	<b>419</b>	<b>63</b>	1	34	2	26	<b>356</b>	91	251	14
	% change	<b>6.1%</b>	<b>10.5%</b>	NA	54.5%	100.0%	-23.5%	<b>5.3%</b>	-8.1%	8.7%	75.0%
Franklin	2016	<b>706</b>	<b>108</b>	0	59	3	46	<b>598</b>	97	489	12
	2017	<b>688</b>	<b>100</b>	1	57	5	37	<b>588</b>	136	426	26
	% change	<b>-2.5%</b>	<b>-7.4%</b>	NA	-3.4%	66.7%	-19.6%	<b>-1.7%</b>	40.2%	-12.9%	116.7%
Fulton	2016	<b>1,181</b>	<b>149</b>	1	59	13	76	<b>1,032</b>	154	856	22
	2017	<b>1,087</b>	<b>118</b>	0	51	12	55	<b>969</b>	142	800	27
	% change	<b>-8.0%</b>	<b>-20.8%</b>	-100.0%	-13.6%	-7.7%	-27.6%	<b>-6.1%</b>	-7.8%	-6.5%	22.7%
Genesee	2016	<b>1,263</b>	<b>127</b>	0	37	20	70	<b>1,136</b>	204	881	51
	2017	<b>1,142</b>	<b>168</b>	0	42	20	106	<b>974</b>	158	784	32
	% change	<b>-9.6%</b>	<b>32.3%</b>	NA	13.5%	0.0%	51.4%	<b>-14.3%</b>	-22.5%	-11.0%	-37.3%
Greene	2016	<b>546</b>	<b>104</b>	0	32	3	69	<b>442</b>	116	315	11
	2017	<b>632</b>	<b>137</b>	1	38	4	94	<b>495</b>	99	380	16
	% change	<b>15.8%</b>	<b>31.7%</b>	NA	18.8%	33.3%	36.2%	<b>12.0%</b>	-14.7%	20.6%	45.5%
Hamilton	2016	<b>54</b>	<b>5</b>	0	2	0	3	<b>49</b>	16	32	1
	2017	<b>36</b>	<b>4</b>	0	2	0	2	<b>32</b>	7	22	3
	% change	<b>-33.3%</b>	<b>-20.0%</b>	NA	0.0%	NA	-33.3%	<b>-34.7%</b>	-56.3%	-31.3%	200.0%
Herkimer	2016	<b>1,062</b>	<b>121</b>	0	31	11	79	<b>941</b>	151	769	21
	2017	<b>1,125</b>	<b>155</b>	1	40	7	107	<b>970</b>	148	794	28
	% change	<b>5.9%</b>	<b>28.1%</b>	NA	29.0%	-36.4%	35.4%	<b>3.1%</b>	-2.0%	3.3%	33.3%
Jefferson	2016	<b>2,379</b>	<b>281</b>	2	92	17	170	<b>2,098</b>	351	1,698	49
	2017	<b>2,253</b>	<b>235</b>	4	84	22	125	<b>2,018</b>	292	1,679	47
	% change	<b>-5.3%</b>	<b>-16.4%</b>	100.0%	-8.7%	29.4%	-26.5%	<b>-3.8%</b>	-16.8%	-1.1%	-4.1%
Kings	2016	<b>50,802</b>	<b>15,523</b>	128	678	4,907	9,810	<b>35,279</b>	3,832	29,366	2,081
	2017	<b>49,766</b>	<b>14,593</b>	111	709	4,497	9,276	<b>35,173</b>	3,659	29,589	1,925
	% change	<b>-2.0%</b>	<b>-6.0%</b>	-13.3%	4.6%	-8.4%	-5.4%	<b>-0.3%</b>	-4.5%	0.8%	-7.5%

Appendix 6  
**New York State Index Crime Summary by County**  
 2016 vs. 2017

County	Year	Total	Violent	Murder	Rape	Robbery	Agg. Assault	Property	Burglary	Larceny	MV Theft
Lewis	2016	236	30	1	20	0	9	206	72	130	4
	2017	257	35	0	22	0	13	222	74	142	6
	% change	8.9%	16.7%	-100.0%	10.0%	NA	44.4%	7.8%	2.8%	9.2%	50.0%
Livingston	2016	886	91	4	25	8	54	795	120	652	23
	2017	809	56	0	24	6	26	753	77	648	28
	% change	-8.7%	-38.5%	-100.0%	-4.0%	-25.0%	-51.9%	-5.3%	-35.8%	-0.6%	21.7%
Madison	2016	1,027	122	1	59	11	51	905	141	729	35
	2017	983	104	1	46	14	43	879	153	702	24
	% change	-4.3%	-14.8%	0.0%	-22.0%	27.3%	-15.7%	-2.9%	8.5%	-3.7%	-31.4%
Monroe	2016	18,762	2,481	45	268	852	1,316	16,281	2,580	12,735	966
	2017	18,945	2,570	35	275	903	1,357	16,375	2,341	13,078	956
	% change	1.0%	3.6%	-22.2%	2.6%	6.0%	3.1%	0.6%	-9.3%	2.7%	-1.0%
Montgomery	2016	1,023	83	1	29	14	39	940	152	770	18
	2017	938	78	1	32	14	31	860	121	716	23
	% change	-8.3%	-6.0%	0.0%	10.3%	0.0%	-20.5%	-8.5%	-20.4%	-7.0%	27.8%
Nassau	2016	15,275	1,826	20	62	734	1,010	13,449	1,483	11,275	691
	2017	14,016	1,650	17	41	599	993	12,366	1,109	10,604	653
	% change	-8.2%	-9.6%	-15.0%	-33.9%	-18.4%	-1.7%	-8.1%	-25.2%	-6.0%	-5.5%
New York	2016	46,653	8,839	41	494	2,929	5,375	37,814	2,206	34,867	741
	2017	47,146	8,671	46	530	2,749	5,346	38,475	2,215	35,622	638
	% change	1.1%	-1.9%	12.2%	7.3%	-6.1%	-0.5%	1.7%	0.4%	2.2%	-13.9%
Niagara	2016	6,142	848	4	68	279	497	5,294	1,061	3,912	321
	2017	5,455	766	3	83	197	483	4,689	844	3,570	275
	% change	-11.2%	-9.7%	-25.0%	22.1%	-29.4%	-2.8%	-11.4%	-20.5%	-8.7%	-14.3%
Oneida	2016	5,233	661	4	160	141	356	4,572	854	3,565	153
	2017	4,773	694	4	203	109	378	4,079	666	3,284	129
	% change	-8.8%	5.0%	0.0%	26.9%	-22.7%	6.2%	-10.8%	-22.0%	-7.9%	-15.7%
Onondaga	2016	11,116	1,415	34	156	398	827	9,701	1,684	7,505	512
	2017	10,893	1,429	24	211	355	839	9,464	1,744	7,146	574
	% change	-2.0%	1.0%	-29.4%	35.3%	-10.8%	1.5%	-2.4%	3.6%	-4.8%	12.1%
Ontario	2016	1,866	164	1	78	18	67	1,702	303	1,365	34
	2017	1,622	135	2	58	16	59	1,487	257	1,194	36
	% change	-13.1%	-17.7%	100.0%	-25.6%	-11.1%	-11.9%	-12.6%	-15.2%	-12.5%	5.9%
Orange	2016	7,313	904	11	132	234	527	6,409	774	5,438	197
	2017	6,739	874	8	165	198	503	5,865	613	5,078	174
	% change	-7.8%	-3.3%	-27.3%	25.0%	-15.4%	-4.6%	-8.5%	-20.8%	-6.6%	-11.7%

Appendix 6  
**New York State Index Crime Summary by County**  
 2016 vs. 2017

County	Year	Total	Violent	Murder	Rape	Robbery	Agg. Assault	Property	Burglary	Larceny	MV Theft
Orleans	2016	749	78	0	24	7	47	671	143	499	29
	2017	763	86	0	19	10	57	677	88	569	20
	% change	1.9%	10.3%	NA	-20.8%	42.9%	21.3%	0.9%	-38.5%	14.0%	-31.0%
Oswego	2016	2,313	265	0	121	22	122	2,048	460	1,518	70
	2017	1,980	218	1	96	17	104	1,762	406	1,282	74
	% change	-14.4%	-17.7%	NA	-20.7%	-22.7%	-14.8%	-14.0%	-11.7%	-15.5%	5.7%
Otsego	2016	779	90	0	35	10	45	689	113	564	12
	2017	732	93	4	45	2	42	639	116	508	15
	% change	-6.0%	3.3%	NA	28.6%	-80.0%	-6.7%	-7.3%	2.7%	-9.9%	25.0%
Putnam	2016	603	37	0	10	6	21	566	86	456	24
	2017	628	54	1	15	9	29	574	94	462	18
	% change	4.1%	45.9%	NA	50.0%	50.0%	38.1%	1.4%	9.3%	1.3%	-25.0%
Queens	2016	33,800	9,356	47	486	2,989	5,834	24,444	3,056	19,455	1,933
	2017	32,860	9,184	50	495	2,851	5,788	23,676	2,721	19,373	1,582
	% change	-2.8%	-1.8%	6.4%	1.9%	-4.6%	-0.8%	-3.1%	-11.0%	-0.4%	-18.2%
Rensselaer	2016	3,658	472	4	63	114	291	3,186	613	2,420	153
	2017	3,513	447	6	69	127	245	3,066	556	2,376	134
	% change	-4.0%	-5.3%	50.0%	9.5%	11.4%	-15.8%	-3.8%	-9.3%	-1.8%	-12.4%
Richmond	2016	6,313	1,589	21	99	422	1,047	4,724	488	3,989	247
	2017	5,969	1,451	13	90	328	1,020	4,518	401	3,883	234
	% change	-5.4%	-8.7%	-38.1%	-9.1%	-22.3%	-2.6%	-4.4%	-17.8%	-2.7%	-5.3%
Rockland	2016	3,561	384	2	48	104	230	3,177	256	2,803	118
	2017	3,404	397	1	68	101	227	3,007	265	2,648	94
	% change	-4.4%	3.4%	-50.0%	41.7%	-2.9%	-1.3%	-5.4%	3.5%	-5.5%	-20.3%
St Lawrence	2016	1,739	173	1	66	22	84	1,566	276	1,260	30
	2017	1,512	134	1	44	12	77	1,378	208	1,133	37
	% change	-13.1%	-22.5%	0.0%	-33.3%	-45.5%	-8.3%	-12.0%	-24.6%	-10.1%	23.3%
Saratoga	2016	2,843	256	2	73	24	157	2,587	325	2,162	100
	2017	2,795	279	2	82	36	159	2,516	346	2,102	68
	% change	-1.7%	9.0%	0.0%	12.3%	50.0%	1.3%	-2.7%	6.5%	-2.8%	-32.0%
Schenectady	2016	4,682	697	7	80	166	444	3,985	571	3,168	246
	2017	4,592	671	2	77	164	428	3,921	525	3,176	220
	% change	-1.9%	-3.7%	-71.4%	-3.8%	-1.2%	-3.6%	-1.6%	-8.1%	0.3%	-10.6%
Schoharie	2016	385	36	0	25	3	8	349	66	271	12
	2017	314	37	0	25	0	12	277	67	199	11
	% change	-18.4%	2.8%	NA	0.0%	-100.0%	50.0%	-20.6%	1.5%	-26.6%	-8.3%

Appendix 6  
**New York State Index Crime Summary by County**  
 2016 vs. 2017

County	Year	Total Violent	Murder	Rape	Robbery	Agg. Assault	Property	Burglary	Larceny	MV Theft	
Schuyler	2016	118	13	0	4	0	9	105	23	79	3
	2017	70	15	0	11	0	4	55	13	40	2
	% change	-40.7%	15.4%	NA	175.0%	NA	-55.6%	-47.6%	-43.5%	-49.4%	-33.3%
Seneca	2016	643	67	0	27	1	39	576	95	469	12
	2017	568	73	0	22	5	46	495	70	422	3
	% change	-11.7%	9.0%	NA	-18.5%	400.0%	17.9%	-14.1%	-26.3%	-10.0%	-75.0%
Steuben	2016	1,523	188	1	73	14	100	1,335	229	1,063	43
	2017	1,263	171	1	79	8	83	1,092	209	850	33
	% change	-17.1%	-9.0%	0.0%	8.2%	-42.9%	-17.0%	-18.2%	-8.7%	-20.0%	-23.3%
Suffolk	2016	23,090	1,896	33	151	612	1,100	21,194	2,132	17,890	1,172
	2017	20,543	1,693	22	160	508	1,003	18,850	1,626	16,136	1,088
	% change	-11.0%	-10.7%	-33.3%	6.0%	-17.0%	-8.8%	-11.1%	-23.7%	-9.8%	-7.2%
Sullivan	2016	1,229	198	4	68	23	103	1,031	265	731	35
	2017	1,280	221	2	98	13	108	1,059	261	763	35
	% change	4.1%	11.6%	-50.0%	44.1%	-43.5%	4.9%	2.7%	-1.5%	4.4%	0.0%
Tioga	2016	463	63	1	25	4	33	400	79	302	19
	2017	456	48	0	28	0	20	408	79	301	28
	% change	-1.5%	-23.8%	-100.0%	12.0%	-100.0%	-39.4%	2.0%	0.0%	-0.3%	47.4%
Tompkins	2016	1,954	158	2	61	21	74	1,796	253	1,506	37
	2017	1,949	139	1	60	31	47	1,810	187	1,590	33
	% change	-0.3%	-12.0%	-50.0%	-1.6%	47.6%	-36.5%	0.8%	-26.1%	5.6%	-10.8%
Ulster	2016	2,641	295	4	75	36	180	2,346	396	1,885	65
	2017	2,550	288	2	64	40	182	2,262	309	1,888	65
	% change	-3.4%	-2.4%	-50.0%	-14.7%	11.1%	1.1%	-3.6%	-22.0%	0.2%	0.0%
Warren	2016	1,201	112	2	41	9	60	1,089	132	944	13
	2017	1,079	107	3	44	10	50	972	131	818	23
	% change	-10.2%	-4.5%	50.0%	7.3%	11.1%	-16.7%	-10.7%	-0.8%	-13.3%	76.9%
Washington	2016	583	95	0	50	5	40	488	96	380	12
	2017	503	77	2	37	3	35	426	72	338	16
	% change	-13.7%	-18.9%	NA	-26.0%	-40.0%	-12.5%	-12.7%	-25.0%	-11.1%	33.3%
Wayne	2016	1,618	159	3	57	19	80	1,459	310	1,100	49
	2017	1,487	186	3	79	17	87	1,301	241	1,017	43
	% change	-8.1%	17.0%	0.0%	38.6%	-10.5%	8.8%	-10.8%	-22.3%	-7.5%	-12.2%
Westchester	2016	12,537	2,113	23	144	768	1,178	10,424	1,327	8,490	607
	2017	11,572	1,948	19	136	600	1,193	9,624	1,009	8,029	586
	% change	-7.7%	-7.8%	-17.4%	-5.6%	-21.9%	1.3%	-7.7%	-24.0%	-5.4%	-3.5%

Appendix 6  
**New York State Index Crime Summary by County**  
 2016 vs. 2017

County	Year	Total	Violent	Murder	Rape	Robbery	Agg. Assault	Property	Burglary	Larceny	MV Theft
Wyoming	2016	<b>327</b>	<b>48</b>	3	14	1	30	<b>279</b>	52	223	4
	2017	<b>346</b>	<b>71</b>	0	25	5	41	<b>275</b>	58	203	14
	% change	<b>5.8%</b>	<b>47.9%</b>	-100.0%	78.6%	400.0%	36.7%	<b>-1.4%</b>	11.5%	-9.0%	250.0%
Yates	2016	<b>320</b>	<b>17</b>	0	6	1	10	<b>303</b>	78	223	2
	2017	<b>259</b>	<b>26</b>	0	12	0	14	<b>233</b>	42	188	3
	% change	<b>-19.1%</b>	<b>52.9%</b>	NA	100.0%	-100.0%	40.0%	<b>-23.1%</b>	-46.2%	-15.7%	50.0%

Notes: NA indicates that the percentage change is not applicable because the count in 2016 was zero.

Index and violent crime totals for 2016 and 2017 include the number of rapes reported under the expanded definition.