

**Division of Criminal Justice Services
Office of Justice Research & Performance**



New York State Crime Update

David A. Paterson
Governor

Sean M. Byrne
Acting DCJS Commissioner

**Crime in New York State
*2009 Preliminary Data***

This report and the attached appendices provide the most recent information available on the number of Index crimes and rates per 100,000 population for each county in New York State. County population data are provided every year by the FBI based on U.S. Census estimates and are used to calculate crime rates. Crime counts are based on official crime reports submitted to DCJS through the Uniform Crime Reporting (UCR) and Incident Based Reporting (IBR) programs. Index offenses include the *violent* crimes of murder, forcible rape, robbery and aggravated assault, and the *property* crimes of burglary, larceny, and motor vehicle theft. Because of their seriousness and frequency, these crimes are used by DCJS and the FBI as indicators of overall crime trends.

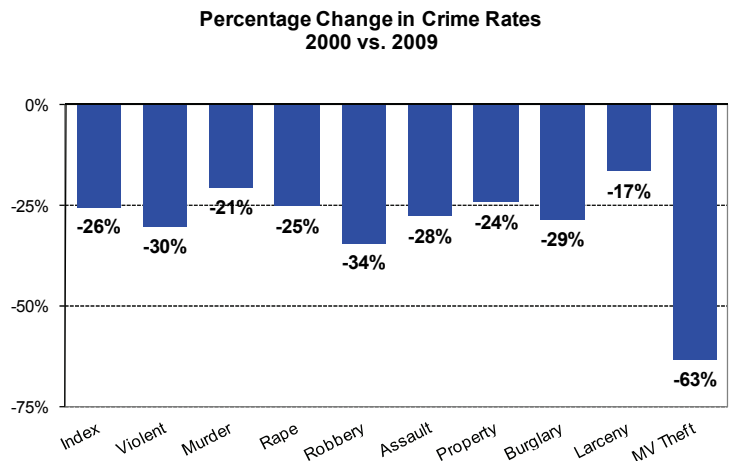
The summary includes information on crimes reported in New York State for the last 10 years. These figures include all reports received by DCJS as of April 14, 2010. They differ slightly from those published by the FBI; the FBI reports include estimations for agencies with incomplete reporting, and exclude data submitted after FBI deadlines.

Detailed information on crime data for each reporting agency from 2005 through 2009 is available on the DCJS website:
<http://criminaljustice.state.ny.us/crimnet/ojsa/indexcrimes/counties.htm>

New York State has experienced significant declines in both the crime *rate*—or the number of “Index” crimes per capita—and the crime *volume*—the total number of Index crimes reported over the past decade while the population of the state has increased.

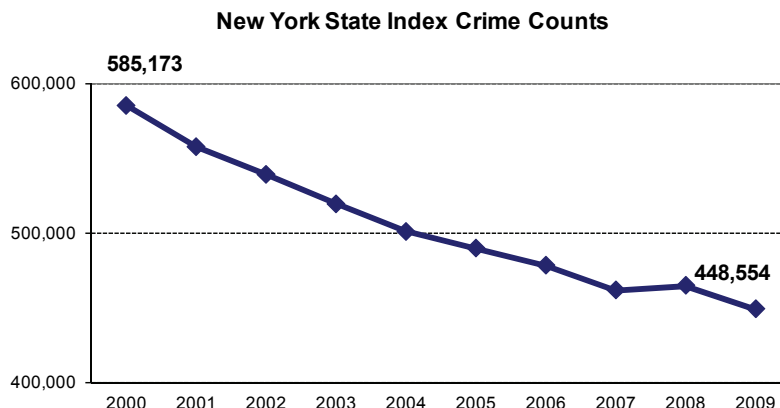
Change in Crime Rates: 2000 vs. 2009

Over the past 10 years, the overall rate of Index crimes per 100,000 residents declined 26 percent; the rate of violent crimes (murder, rape, robbery, and aggravated assault) fell 30% and property crimes (burglary, larceny, and motor vehicle theft) were down 24%. The largest reductions in crime rates were reported for motor vehicle theft, robbery, and burglary (see Appendix 1 for a statewide, annualized comparison of crime rates).



Change in Crime Volume: 2000 vs. 2009

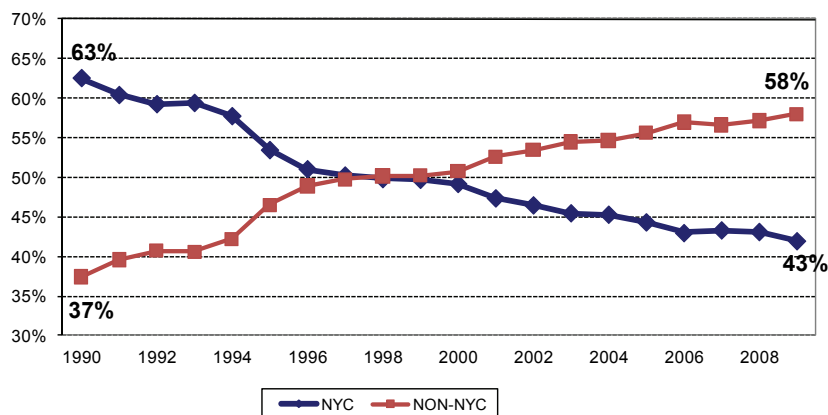
While New York State's crime rate has decreased over the past 10 years, New York has also reported a significant reduction in the actual number of crimes reported. The number of major crimes reported fell each year since 2000, reaching the lowest levels ever recorded in 2007 before rising slightly in 2008 and falling again in 2009. There were 136,619 fewer crimes reported in 2009 than in 2000, while the population of the State increased by half a million.



Trends in Regional Crime: 2000 to 2009

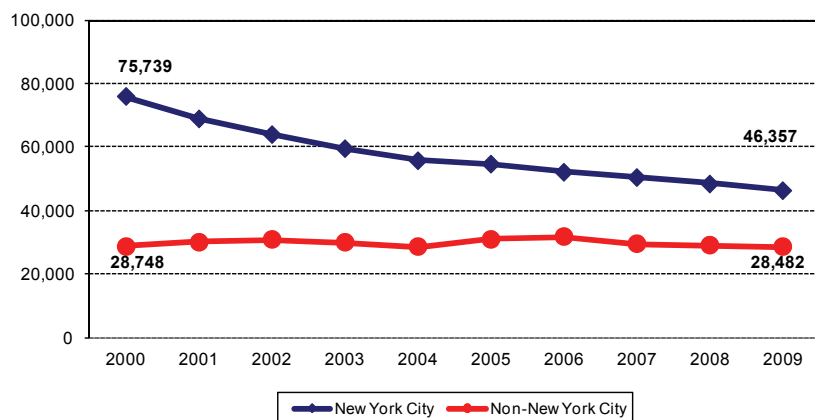
Not all areas of the State have benefited equally from the historic reduction in crime. The decline in Index crime in New York City was much larger than that experienced in counties outside of New York City (See Appendix 2).

Regional Crime as a Percent of Statewide Crime



Given the greater decline in crime in New York City, the proportion of statewide crime that each region accounted for has shifted dramatically. The counties outside New York City now account for 58% of the reported crime statewide, as compared to 50% in 2000 and 37% in 1990.

Regional Trends in Violent Crime

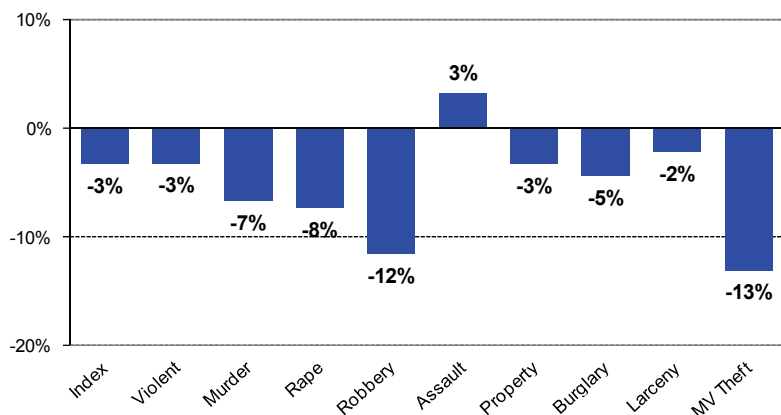


While a higher proportion of the State's violent crimes occurred in New York City, that region reported a 39% drop in violent crimes since 2000, while the non-New York City counties reported an decrease of less than 1%. All violent crime categories declined in New York City between 2000 and 2009, while all but assault increased in the Non-New York City region during the same period (See Appendix 2).

Recent Statewide Crime Trends: 2008 vs. 2009

The most recent 2009 crime data show that crime volume in New York State decreased between 2008 and 2009.

**Percentage Change in Crime Volume
2008 vs. 2009**



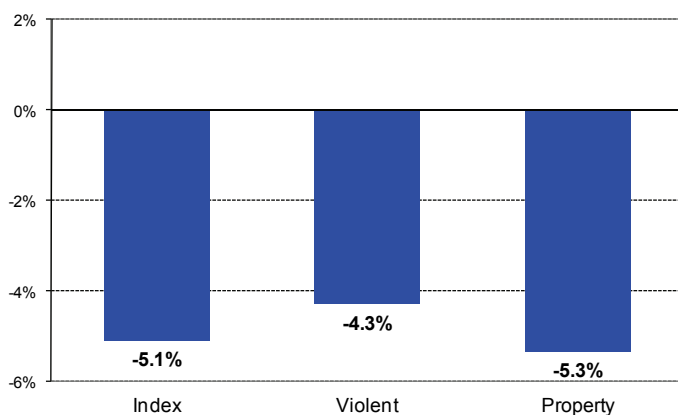
In 2009, New York State reported an overall drop of 3% in the seven major Index crimes as compared to 2008.

Both violent and property crime categories fell at the same rate (-3%). The only increase was reported in aggravated assaults (3%) while motor vehicle thefts reported the largest decrease (-13%).

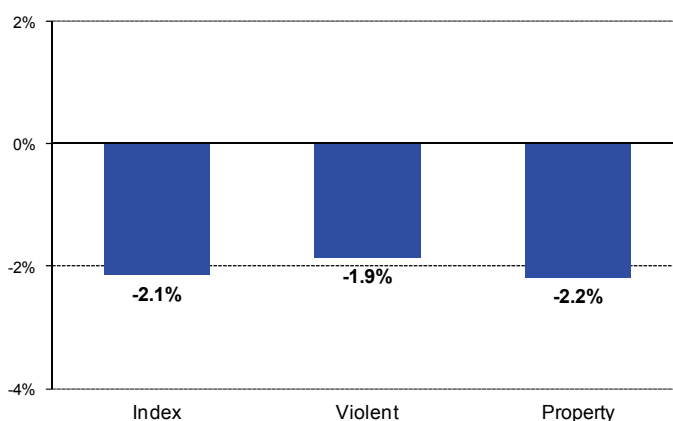
Percentage Change in Crime by Region: 2008 vs. 2009

The New York City region reported a 5% decline in Index crimes between 2008 and 2009, while the rest of the State reported a 2% decline. Both regions reported slightly larger decreases in property crimes than in violent crimes (crime counts for 2008 and 2009 are presented for each county in Appendix 3; county crime rates for 2009 are provided in Appendix 4).

New York City



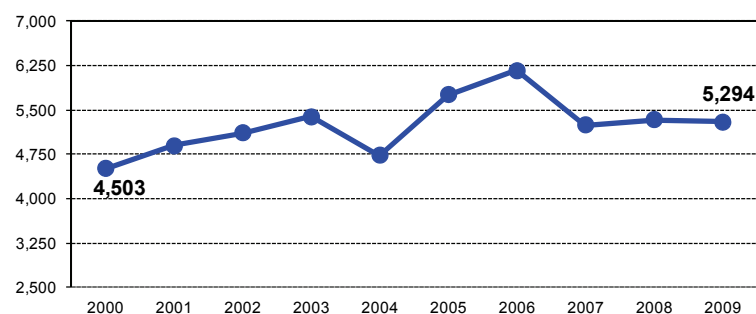
Non-New York City



Trends in Violent Crimes by Firearm: 2000 to 2009

The Uniform Crime Reporting system includes information provided by law enforcement regarding the number of violent crimes reported which involved the use of a firearm. Currently, these figures are only available from the non-New York City region. Over the last 10 years, there has been a general increase in the use of firearms in violent crimes, with the highest count reported in 2006 (6,164 or 19% of violent crimes). In 2009, there were 5,294 reported violent crime incidents which involved a firearm, a decrease of almost 1% over 2008, and an increase of 18% over 2000. Appendix 5 provides counts of firearm related crimes for each of the violent Index crimes.

Violent Crimes by Firearm: Non-New York City



Appendix 5 shows that during 2009, 181 of 306 murders reported outside of New York City involved a firearm (59%). This was the highest proportion by firearm over the last 10 years, up from 50% in 2000. The number of firearm-related robberies also increased by 8% over 2000, but the proportion by firearm has remained relatively stable at approximately 30%. The number of aggravated assaults fell by 774 between 2000 and 2009, but the number by firearm rose from 1,697 to 2,281 (34%).

Appendix 1
New York State Index Crime Counts and Rates per 100,000 Population: 2000 - 2009

Counts	2000	2001	2002	2003	2004	2005	2006	2007	2008	2009	% change	
											2008-09	2000-09
Index Crime	585,173	557,485	538,851	519,025	500,488	489,334	477,824	461,188	464,301	448,554	-3.4%	-23.3%
Violent Crime	104,487	98,708	94,592	89,351	84,275	85,518	83,813	79,843	77,450	74,839	-3.4%	-28.4%
Murder	954	971	905	924	899	874	927	808	834	777	-6.8%	-18.6%
Forcible Rape	3,352	3,448	3,774	3,770	3,561	3,614	3,165	2,924	2,782	2,574	-7.5%	-23.2%
Robbery	41,609	37,717	36,945	35,777	33,350	35,002	34,379	31,053	31,772	28,061	-11.7%	-32.6%
Agg. Assault	58,572	56,572	52,968	48,880	46,465	46,028	45,342	45,058	42,062	43,427	3.2%	-25.9%
Property Crime	480,686	458,777	444,259	429,674	416,213	403,816	394,011	381,345	386,851	373,715	-3.4%	-22.3%
Burglary	85,028	79,132	76,487	75,405	69,900	67,792	68,485	64,824	65,367	62,393	-4.5%	-26.6%
Larceny	337,999	328,439	319,457	309,135	305,537	300,490	293,440	288,551	296,409	289,562	-2.3%	-14.3%
MV Theft	57,659	51,206	48,315	45,134	40,776	35,534	32,086	27,970	25,075	21,760	-13.2%	-62.3%
Rates per 100,000 Pop.	2000	2001	2002	2003	2004	2005	2006	2007	2008	2009	% change	
											2008-09	2000-09
Index Crime	3,083.7	2,932.4	2,812.7	2,704.6	2,603.0	2,541.4	2,475.5	2,390.4	2,382.7	2,295.9	-3.6%	-25.5%
Violent Crime	550.6	519.2	493.8	465.6	438.3	444.1	434.2	413.8	397.5	383.1	-3.6%	-30.4%
Murder	5.0	5.1	4.7	4.8	4.7	4.5	4.8	4.2	4.3	4.0	-7.1%	-20.9%
Forcible Rape	17.7	18.1	19.7	19.6	18.5	18.8	16.4	15.2	14.3	13.2	-7.7%	-25.4%
Robbery	219.3	198.4	192.8	186.4	173.5	181.8	178.1	160.9	163.0	143.6	-11.9%	-34.5%
Agg. Assault	308.7	297.6	276.5	254.7	241.7	239.0	234.9	233.5	215.9	222.3	3.0%	-28.0%
Property Crime	2,533.1	2,413.2	2,319.0	2,239.0	2,164.7	2,097.2	2,041.3	1,976.5	1,985.3	1,912.8	-3.6%	-24.5%
Burglary	448.1	416.2	399.3	392.9	363.5	352.1	354.8	336.0	335.5	319.4	-4.8%	-28.7%
Larceny	1,781.1	1,727.6	1,667.5	1,610.9	1,589.1	1,560.6	1,520.3	1,495.6	1,521.1	1,482.1	-2.6%	-16.8%
MV Theft	303.8	269.3	252.2	235.2	212.1	184.5	166.2	145.0	128.7	111.4	-13.4%	-63.3%

Source: DCJS, Uniform Crime/Incident-Based Reporting systems.
Includes all reports received as of 4/14/10.

Appendix 2
New York State Index Crime Summary by Region: 2000 - 2009

NEW YORK CITY	2000	2001	2002	2003	2004	2005	2006	2007	2008	2009	% change	
											2008-09	2000-09
Index Crime	287,995	264,225	250,631	236,215	226,876	217,132	205,522	199,941	198,419	188,357	-5.1%	-34.6%
Violent Crime	75,739	68,737	63,840	59,448	55,688	54,623	52,086	50,453	48,430	46,357	-4.3%	-38.8%
Murder	667	649	587	597	570	539	596	496	523	471	-9.9%	-29.4%
Forcible Rape	1,643	1,533	1,689	1,609	1,428	1,412	1,071	875	890	832	-6.5%	-49.4%
Robbery	32,601	28,206	27,229	25,989	24,373	24,722	23,511	21,787	22,186	18,597	-16.2%	-43.0%
Agg. Assault	40,828	38,349	34,335	31,253	29,317	27,950	26,908	27,295	24,831	26,457	6.5%	-35.2%
Property Crime	212,256	195,488	186,791	176,767	171,188	162,509	153,436	149,488	149,989	142,000	-5.3%	-33.1%
Burglary	37,015	31,564	30,102	28,293	26,100	23,210	22,137	20,914	19,867	18,780	-5.5%	-49.3%
Larceny	139,353	133,928	129,655	124,846	124,016	120,918	115,363	115,318	117,682	112,526	-4.4%	-19.3%
MV Theft	35,888	29,996	27,034	23,628	21,072	18,381	15,936	13,256	12,440	10,694	-14.0%	-70.2%
NON-NEW YORK CITY	2000	2001	2002	2003	2004	2005	2006	2007	2008	2009	% change	
											2008-09	2000-09
Index Crime	297,178	293,260	288,220	282,810	273,612	272,202	272,302	261,247	265,882	260,197	-2.1%	-12.4%
Violent Crime	28,748	29,971	30,752	29,903	28,587	30,895	31,727	29,390	29,020	28,482	-1.9%	-0.9%
Murder	287	322	318	327	329	335	331	312	311	306	-1.6%	6.6%
Forcible Rape	1,709	1,915	2,085	2,161	2,133	2,202	2,094	2,049	1,892	1,742	-7.9%	1.9%
Robbery	9,008	9,511	9,716	9,788	8,977	10,280	10,868	9,266	9,586	9,464	-1.3%	5.1%
Agg. Assault	17,744	18,223	18,633	17,627	17,148	18,078	18,434	17,763	17,231	16,970	-1.5%	-4.4%
Property Crime	268,430	263,289	257,468	252,907	245,025	241,307	240,575	231,857	236,862	231,715	-2.2%	-13.7%
Burglary	48,013	47,568	46,385	47,112	43,800	44,582	46,348	43,910	45,500	43,613	-4.1%	-9.2%
Larceny	198,646	194,511	189,802	184,289	181,521	179,572	178,077	173,233	178,727	177,036	-0.9%	-10.9%
MV Theft	21,771	21,210	21,281	21,506	19,704	17,153	16,150	14,714	12,635	11,066	-12.4%	-49.2%

Note: New York City data reported from 2000 to 2002 differs slightly from what the NYPD reports.

Source: DCJS, Uniform Crime/Incident-Based Reporting systems.
Includes all reports received as of 4/14/10.

Appendix 3
New York State Index Crime Summary by County
 2008 vs. 2009

County	Year	Total	Violent	Forcible			Agg.	Property	Burglary	Larceny	MV
				Murder	Rape	Robbery	Assault				Theft
Albany	2008	10,623	1,350	10	73	452	815	9,273	1,629	7,313	331
	2009	10,402	1,288	12	64	399	813	9,114	1,462	7,297	355
	% change	-2.1%	-4.6%	20.0%	-12.3%	-11.7%	-0.2%	-1.7%	-10.3%	-0.2%	7.3%
Allegany	2008	651	91	0	10	4	77	560	174	368	18
	2009	763	127	0	45	3	79	636	200	419	17
	% change	17.2%	39.6%	NA	350.0%	-25.0%	2.6%	13.6%	14.9%	13.9%	-5.6%
Broome	2008	6,848	554	2	75	130	347	6,294	958	5,210	126
	2009	6,091	454	17	42	94	301	5,637	822	4,708	107
	% change	-11.1%	-18.1%	750.0%	-44.0%	-27.7%	-13.3%	-10.4%	-14.2%	-9.6%	-15.1%
Cattaraugus	2008	1,921	215	2	24	20	169	1,706	380	1,274	52
	2009	1,824	184	1	25	13	145	1,640	306	1,297	37
	% change	-5.0%	-14.4%	-50.0%	4.2%	-35.0%	-14.2%	-3.9%	-19.5%	1.8%	-28.8%
Cayuga	2008	1,850	147	0	14	16	117	1,703	359	1,320	24
	2009	1,652	186	2	23	28	133	1,466	325	1,118	23
	% change	-10.7%	26.5%	NA	64.3%	75.0%	13.7%	-13.9%	-9.5%	-15.3%	-4.2%
Chautauqua	2008	3,730	321	6	39	55	221	3,409	836	2,485	88
	2009	3,591	256	1	35	45	175	3,335	667	2,608	60
	% change	-3.7%	-20.2%	-83.3%	-10.3%	-18.2%	-20.8%	-2.2%	-20.2%	4.9%	-31.8%
Chemung	2008	2,336	204	4	18	37	145	2,132	441	1,652	39
	2009	2,123	161	4	13	29	115	1,962	384	1,533	45
	% change	-9.1%	-21.1%	0.0%	-27.8%	-21.6%	-20.7%	-8.0%	-12.9%	-7.2%	15.4%
Chenango	2008	931	41	2	18	3	18	890	182	689	19
	2009	986	53	0	11	7	35	933	208	707	18
	% change	5.9%	29.3%	-100.0%	-38.9%	133.3%	94.4%	4.8%	14.3%	2.6%	-5.3%
Clinton	2008	1,818	142	1	30	6	105	1,676	352	1,287	37
	2009	1,692	133	1	19	12	101	1,559	388	1,137	34
	% change	-6.9%	-6.3%	0.0%	-36.7%	100.0%	-3.8%	-7.0%	10.2%	-11.7%	-8.1%
Columbia	2008	1,325	135	2	5	9	119	1,190	271	899	20
	2009	1,157	110	0	8	5	97	1,047	292	741	14
	% change	-12.7%	-18.5%	-100.0%	60.0%	-44.4%	-18.5%	-12.0%	7.7%	-17.6%	-30.0%
Cortland	2008	1,106	112	1	17	8	86	994	205	759	30
	2009	1,084	106	0	13	15	78	978	227	722	29
	% change	-2.0%	-5.4%	-100.0%	-23.5%	87.5%	-9.3%	-1.6%	10.7%	-4.9%	-3.3%
Delaware	2008	737	74	0	5	7	62	663	215	433	15
	2009	753	70	0	10	5	55	683	186	486	11
	% change	2.2%	-5.4%	NA	100.0%	-28.6%	-11.3%	3.0%	-13.5%	12.2%	-26.7%

Appendix 3
New York State Index Crime Summary by County
 2008 vs. 2009

County	Year	Total	Violent	Forcible			Agg.	Property	Burglary	Larceny	MV
				Murder	Rape	Robbery	Assault				Theft
Dutchess	2008	6,494	886	5	45	245	591	5,608	990	4,407	211
	2009	5,873	898	4	34	276	584	4,975	864	3,949	162
	% change	-9.6%	1.4%	-20.0%	-24.4%	12.7%	-1.2%	-11.3%	-12.7%	-10.4%	-23.2%
Erie	2008	33,372	4,735	39	248	1,789	2,659	28,637	6,205	20,070	2,362
	2009	32,653	4,916	66	213	1,919	2,718	27,737	5,995	19,724	2,018
	% change	-2.2%	3.8%	69.2%	-14.1%	7.3%	2.2%	-3.1%	-3.4%	-1.7%	-14.6%
Essex	2008	467	51	0	6	1	44	416	104	306	6
	2009	518	49	0	8	1	40	469	148	309	12
	% change	10.9%	-3.9%	NA	33.3%	0.0%	-9.1%	12.7%	42.3%	1.0%	100.0%
Franklin	2008	1,000	95	0	21	3	71	905	245	646	14
	2009	937	65	0	10	4	51	872	230	614	28
	% change	-6.3%	-31.6%	NA	-52.4%	33.3%	-28.2%	-3.6%	-6.1%	-5.0%	100.0%
Fulton	2008	1,487	99	1	12	5	81	1,388	241	1,101	46
	2009	1,526	112	1	20	11	80	1,414	287	1,080	47
	% change	2.6%	13.1%	0.0%	66.7%	120.0%	-1.2%	1.9%	19.1%	-1.9%	2.2%
Genesee	2008	1,443	113	2	18	14	79	1,330	255	1,032	43
	2009	1,496	92	1	17	17	57	1,404	212	1,155	37
	% change	3.7%	-18.6%	-50.0%	-5.6%	21.4%	-27.8%	5.6%	-16.9%	11.9%	-14.0%
Greene	2008	1,421	102	1	2	5	94	1,319	262	1,016	41
	2009	840	102	1	7	6	88	738	207	509	22
	% change	-40.9%	0.0%	0.0%	250.0%	20.0%	-6.4%	-44.0%	-21.0%	-49.9%	-46.3%
Hamilton	2008	40	5	0	2	0	3	35	8	27	0
	2009	50	2	0	0	0	2	48	15	33	0
	% change	25.0%	-60.0%	NA	-100.0%	NA	-33.3%	37.1%	87.5%	22.2%	NA
Herkimer	2008	1,284	201	0	14	14	173	1,083	226	837	20
	2009	1,369	168	0	18	17	133	1,201	236	953	12
	% change	6.6%	-16.4%	NA	28.6%	21.4%	-23.1%	10.9%	4.4%	13.9%	-40.0%
Jefferson	2008	2,758	271	0	26	26	219	2,487	480	1,923	84
	2009	2,686	223	4	33	20	166	2,463	454	1,957	52
	% change	-2.6%	-17.7%	NA	26.9%	-23.1%	-24.2%	-1.0%	-5.4%	1.8%	-38.1%
Lewis	2008	384	35	0	5	1	29	349	126	210	13
	2009	385	23	1	5	2	15	362	120	226	16
	% change	0.3%	-34.3%	NA	0.0%	100.0%	-48.3%	3.7%	-4.8%	7.6%	23.1%
Livingston	2008	1,068	70	0	14	4	52	998	164	819	15
	2009	983	68	1	11	7	49	915	124	772	19
	% change	-8.0%	-2.9%	NA	-21.4%	75.0%	-5.8%	-8.3%	-24.4%	-5.7%	26.7%

Appendix 3
New York State Index Crime Summary by County
 2008 vs. 2009

County	Year	Total	Violent	Forcible			Agg.	Property	Burglary	Larceny	MV
				Murder	Rape	Robbery	Assault				Theft
Madison	2008	1,421	70	0	15	5	50	1,351	297	1,031	23
	2009	1,222	52	0	10	10	32	1,170	234	914	22
	% change	-14.0%	-25.7%	NA	-33.3%	100.0%	-36.0%	-13.4%	-21.2%	-11.3%	-4.3%
Monroe	2008	24,896	2,917	48	147	1,254	1,468	21,979	4,374	15,907	1,698
	2009	25,710	2,607	32	171	1,009	1,395	23,103	4,561	17,200	1,342
	% change	3.3%	-10.6%	-33.3%	16.3%	-19.5%	-5.0%	5.1%	4.3%	8.1%	-21.0%
Montgomery	2008	785	134	1	1	5	127	651	148	488	15
	2009	726	131	0	0	6	125	595	107	473	15
	% change	-7.5%	-2.2%	-100.0%	-100.0%	20.0%	-1.6%	-8.6%	-27.7%	-3.1%	0.0%
Nassau	2008	20,899	2,281	28	74	1,126	1,053	18,618	2,621	14,551	1,446
	2009	21,607	2,471	30	93	1,191	1,157	19,136	2,568	15,020	1,548
	% change	3.4%	8.3%	7.1%	25.7%	5.8%	9.9%	2.8%	-2.0%	3.2%	7.1%
Niagara	2008	7,151	762	5	37	214	506	6,389	1,674	4,418	297
	2009	7,132	846	9	47	235	555	6,286	1,619	4,403	264
	% change	-0.3%	11.0%	80.0%	27.0%	9.8%	9.7%	-1.6%	-3.3%	-0.3%	-11.1%
Oneida	2008	6,554	659	9	47	211	392	5,895	1,305	4,383	207
	2009	6,534	636	8	43	176	409	5,898	1,087	4,671	140
	% change	-0.3%	-3.5%	-11.1%	-8.5%	-16.6%	4.3%	0.1%	-16.7%	6.6%	-32.4%
Onondaga	2008	13,453	1,728	27	114	505	1,082	11,725	2,819	8,219	687
	2009	13,383	1,674	20	99	499	1,056	11,709	3,020	8,200	489
	% change	-0.5%	-3.1%	-25.9%	-13.2%	-1.2%	-2.4%	-0.1%	7.1%	-0.2%	-28.8%
Ontario	2008	1,894	108	0	22	29	57	1,786	322	1,427	37
	2009	1,868	138	3	23	33	79	1,730	300	1,396	34
	% change	-1.4%	27.8%	NA	4.5%	13.8%	38.6%	-3.1%	-6.8%	-2.2%	-8.1%
Orange	2008	9,160	1,041	13	69	330	629	8,119	1,292	6,501	326
	2009	8,704	936	9	46	321	560	7,768	1,087	6,423	258
	% change	-5.0%	-10.1%	-30.8%	-33.3%	-2.7%	-11.0%	-4.3%	-15.9%	-1.2%	-20.9%
Orleans	2008	1,099	73	1	6	19	47	1,026	243	735	48
	2009	1,264	71	0	14	9	48	1,193	319	833	41
	% change	15.0%	-2.7%	-100.0%	133.3%	-52.6%	2.1%	16.3%	31.3%	13.3%	-14.6%
Oswego	2008	2,591	184	3	35	21	125	2,407	581	1,755	71
	2009	2,775	176	1	31	26	118	2,599	654	1,867	78
	% change	7.1%	-4.3%	-66.7%	-11.4%	23.8%	-5.6%	8.0%	12.6%	6.4%	9.9%
Otsego	2008	1,102	86	0	10	6	70	1,016	292	703	21
	2009	1,195	140	0	18	18	104	1,055	319	718	18
	% change	8.4%	62.8%	NA	80.0%	200.0%	48.6%	3.8%	9.2%	2.1%	-14.3%

Appendix 3
New York State Index Crime Summary by County
 2008 vs. 2009

County	Year	Total	Violent	Forcible			Agg.	Property	Burglary	Larceny	MV
				Murder	Rape	Robbery	Assault				Theft
Putnam	2008	1,039	83	2	6	13	62	956	201	724	31
	2009	953	84	0	6	15	63	869	187	646	36
	% change	-8.3%	1.2%	-100.0%	0.0%	15.4%	1.6%	-9.1%	-7.0%	-10.8%	16.1%
Rensselaer	2008	4,712	541	5	33	175	328	4,171	943	3,064	164
	2009	4,696	505	3	29	189	284	4,191	958	3,058	175
	% change	-0.3%	-6.7%	-40.0%	-12.1%	8.0%	-13.4%	0.5%	1.6%	-0.2%	6.7%
Rockland	2008	5,019	539	2	32	150	355	4,480	561	3,781	138
	2009	4,962	471	2	18	148	303	4,491	497	3,842	152
	% change	-1.1%	-12.6%	0.0%	-43.8%	-1.3%	-14.6%	0.2%	-11.4%	1.6%	10.1%
Saratoga	2008	3,112	157	0	23	20	114	2,955	503	2,370	82
	2009	2,876	166	1	24	35	106	2,710	472	2,175	63
	% change	-7.6%	5.7%	NA	4.3%	75.0%	-7.0%	-8.3%	-6.2%	-8.2%	-23.2%
Schenectady	2008	5,636	740	9	43	311	377	4,896	1,124	3,484	288
	2009	5,818	652	7	41	258	346	5,166	1,012	3,897	257
	% change	3.2%	-11.9%	-22.2%	-4.7%	-17.0%	-8.2%	5.5%	-10.0%	11.9%	-10.8%
Schoharie	2008	605	22	0	4	2	16	583	151	420	12
	2009	570	27	1	4	4	18	543	145	389	9
	% change	-5.8%	22.7%	NA	0.0%	100.0%	12.5%	-6.9%	-4.0%	-7.4%	-25.0%
Schuyler	2008	207	15	0	3	1	11	192	35	153	4
	2009	172	18	0	4	1	13	154	37	112	5
	% change	-16.9%	20.0%	NA	33.3%	0.0%	18.2%	-19.8%	5.7%	-26.8%	25.0%
Seneca	2008	656	45	0	9	4	32	611	98	489	24
	2009	639	48	0	3	5	40	591	123	449	19
	% change	-2.6%	6.7%	NA	-66.7%	25.0%	25.0%	-3.3%	25.5%	-8.2%	-20.8%
St Lawrence	2008	2,185	206	0	23	5	178	1,979	416	1,515	48
	2009	1,671	196	0	38	11	147	1,475	402	1,040	33
	% change	-23.5%	-4.9%	NA	65.2%	120.0%	-17.4%	-25.5%	-3.4%	-31.4%	-31.3%
Steuben	2008	1,495	161	0	33	7	121	1,334	276	1,026	32
	2009	1,393	133	1	23	11	98	1,260	280	958	22
	% change	-6.8%	-17.4%	NA	-30.3%	57.1%	-19.0%	-5.5%	1.4%	-6.6%	-31.3%
Suffolk	2008	33,446	2,570	39	112	971	1,448	30,876	4,689	24,094	2,093
	2009	31,963	2,705	33	85	1,049	1,538	29,258	4,473	23,134	1,651
	% change	-4.4%	5.3%	-15.4%	-24.1%	8.0%	6.2%	-5.2%	-4.6%	-4.0%	-21.1%
Sullivan	2008	1,804	195	3	27	27	138	1,609	506	1,045	58
	2009	1,541	185	2	22	28	133	1,356	431	891	34
	% change	-14.6%	-5.1%	-33.3%	-18.5%	3.7%	-3.6%	-15.7%	-14.8%	-14.7%	-41.4%

Appendix 3
New York State Index Crime Summary by County
 2008 vs. 2009

County	Year	Total	Violent	Forcible			Agg.	Property	Burglary	Larceny	MV
				Murder	Rape	Robbery	Assault				Theft
Tioga	2008	580	36	0	9	1	26	544	123	402	19
	2009	527	29	0	4	0	25	498	122	359	17
	% change	-9.1%	-19.4%	NA	-55.6%	-100.0%	-3.8%	-8.5%	-0.8%	-10.7%	-10.5%
Tompkins	2008	2,466	137	2	14	35	86	2,329	426	1,848	55
	2009	2,560	202	3	12	34	153	2,358	362	1,962	34
	% change	3.8%	47.4%	50.0%	-14.3%	-2.9%	77.9%	1.2%	-15.0%	6.2%	-38.2%
Ulster	2008	3,665	458	5	51	71	331	3,207	822	2,288	97
	2009	3,883	445	1	27	98	319	3,438	704	2,617	117
	% change	5.9%	-2.8%	-80.0%	-47.1%	38.0%	-3.6%	7.2%	-14.4%	14.4%	20.6%
Warren	2008	1,614	111	0	20	9	82	1,503	166	1,320	17
	2009	1,444	77	0	6	7	64	1,367	173	1,169	25
	% change	-10.5%	-30.6%	NA	-70.0%	-22.2%	-22.0%	-9.0%	4.2%	-11.4%	47.1%
Washington	2008	909	119	2	21	6	90	790	187	579	24
	2009	766	60	0	9	4	47	706	163	513	30
	% change	-15.7%	-49.6%	-100.0%	-57.1%	-33.3%	-47.8%	-10.6%	-12.8%	-11.4%	25.0%
Wayne	2008	2,007	185	1	27	29	128	1,822	392	1,382	48
	2009	1,743	136	0	21	25	90	1,607	392	1,167	48
	% change	-13.2%	-26.5%	-100.0%	-22.2%	-13.8%	-29.7%	-11.8%	0.0%	-15.6%	0.0%
Westchester	2008	16,611	2,402	27	75	1,087	1,213	14,209	2,369	10,999	841
	2009	16,439	2,463	22	77	1,034	1,330	13,976	2,232	10,852	892
	% change	-1.0%	2.5%	-18.5%	2.7%	-4.9%	9.6%	-1.6%	-5.8%	-1.3%	6.1%
Wyoming	2008	546	52	0	4	6	42	494	110	371	13
	2009	493	47	0	6	1	40	446	101	335	10
	% change	-9.7%	-9.6%	NA	50.0%	-83.3%	-4.8%	-9.7%	-8.2%	-9.7%	-23.1%
Yates	2008	284	15	0	3	3	9	269	72	194	3
	2009	350	11	1	3	1	6	339	78	260	1
	% change	23.2%	-26.7%	NA	0.0%	-66.7%	-33.3%	26.0%	8.3%	34.0%	-66.7%
Multiple County	2008	1,185	139	1	2	74	62	1,046	54	978	14
	2009	1,184	98	0	1	38	59	1,086	35	1,039	12
	% change	-0.1%	-29.5%	-100.0%	-50.0%	-48.6%	-4.8%	3.8%	-35.2%	6.2%	-14.3%

Note: Counts are not available for individual counties in New York City.

NA indicates that the percentage change is not applicable due to the count in 2008 being zero.

Multiple County includes agencies such as regional Park PDs and MTA whose jurisdiction covers multiple counties.

Source: DCJS, Uniform Crime/Incident-Based Reporting systems.

Includes all reports received as of 4/14/10.

Appendix 4

New York State Index Crime Summary by County: 2009
Rates per 100,000 Population

County	Index Crime Rate			County	Index Crime Rate		
	Overall	Violent	Property		Overall	Violent	Property
Albany	3,485.9	431.6	3,054.3	Ontario	1,780.4	131.5	1,648.9
Allegany	1,538.2	256.0	1,282.1	Orange	2,267.7	243.9	2,023.8
Broome	3,133.5	233.6	2,900.0	Orleans	3,016.4	169.4	2,847.0
Cattaraugus	2,356.7	237.7	2,118.9	Oswego	2,288.9	145.2	2,143.7
Cayuga	2,076.2	233.8	1,842.4	Otsego	1,928.2	225.9	1,702.3
Chautauqua	2,697.7	192.3	2,505.4	Putnam	957.1	84.4	872.7
Chemung	2,428.2	184.1	2,244.1	Rensselaer	3,019.7	324.7	2,695.0
Chenango	1,939.8	104.3	1,835.5	Rockland	1,654.3	157.0	1,497.3
Clinton	2,059.6	161.9	1,897.7	St. Lawrence	1,527.0	179.1	1,347.9
Columbia	1,870.0	177.8	1,692.2	Saratoga	1,313.6	75.8	1,237.8
Cortland	2,246.3	219.7	2,026.6	Schenectady	3,829.1	429.1	3,400.0
Delaware	1,670.5	155.3	1,515.3	Schoharie	1,784.8	84.5	1,700.3
Dutchess	1,996.6	305.3	1,691.3	Schuyler	913.0	95.5	817.5
Erie	3,607.0	543.0	3,063.9	Seneca	1,870.5	140.5	1,730.0
Essex	1,419.4	134.3	1,285.1	Steuben	1,446.5	138.1	1,308.4
Franklin	1,857.4	128.8	1,728.5	Suffolk	2,100.1	177.7	1,922.4
Fulton	2,779.0	204.0	2,575.0	Sullivan	2,017.4	242.2	1,775.2
Genesee	2,605.4	160.2	2,445.1	Tioga	1,054.3	58.0	996.3
Greene	1,711.8	207.9	1,503.9	Tompkins	2,519.3	198.8	2,320.5
Hamilton	1,004.0	40.2	963.9	Ulster	2,133.0	244.5	1,888.6
Herkimer	2,210.1	271.2	1,938.9	Warren	2,179.7	116.2	2,063.5
Jefferson	2,261.6	187.8	2,073.8	Washington	1,216.0	95.3	1,120.8
Lewis	1,476.1	88.2	1,387.9	Wayne	1,909.7	149.0	1,760.7
Livingston	1,560.2	107.9	1,452.3	Westchester	1,718.0	257.4	1,460.6
Madison	1,751.1	74.5	1,676.6	Wyoming	1,189.3	113.4	1,075.9
Monroe	3,513.0	356.2	3,156.8	Yates	1,420.8	44.7	1,376.1
Montgomery	1,495.2	269.8	1,225.4	New York City	2,242.1	551.8	1,690.3
Nassau	1,597.0	182.6	1,414.4	Non-New York City	2,336.4	255.8	2,080.7
Niagara	3,335.3	395.6	2,939.7	New York State	2,295.9	383.1	1,912.8
Oneida	2,826.8	275.2	2,551.7				
Onondaga	2,961.4	370.4	2,591.0				

Note: Rates are not available for individual counties in New York City.

Source: DCJS, Uniform Crime/Incident-Based Reporting systems.
Includes all reports received as of 4/14/10.

Appendix 5
Violent Crimes and Firearms
Non-New York City Region

	2000	2001	2002	2003	2004	2005	2006	2007	2008	2009	08 vs. 09 % Change	00 vs. 09 % Change
Violent Crimes	28,745	29,964	30,745	29,906	28,577	30,895	31,727	29,390	29,021	28,482	-1.9%	-0.9%
Firearm Related	4,503	4,894	5,109	5,389	4,726	5,758	6,164	5,237	5,331	5,294	-0.7%	17.6%
Percent Firearm	15.7%	16.3%	16.6%	18.0%	16.5%	18.6%	19.4%	17.8%	18.4%	18.6%		
Murder	284	315	311	330	319	335	331	312	312	306	-1.9%	7.7%
Firearm Related	141	171	178	190	156	168	186	175	179	181	1.1%	28.4%
Percent Firearm	49.6%	54.3%	57.2%	57.6%	48.9%	50.1%	56.2%	56.1%	57.4%	59.2%		
Forcible Rape	1,709	1,915	2,085	2,161	2,133	2,202	2,094	2,049	1,892	1,742	-7.9%	1.9%
Firearm Related	58	65	45	47	55	52	35	31	36	24	-33.3%	-58.6%
Percent Firearm	3.4%	3.4%	2.2%	2.2%	2.6%	2.4%	1.7%	1.5%	1.9%	1.4%		
Robbery	9,008	9,511	9,716	9,788	8,977	10,280	10,868	9,266	9,586	9,464	-1.3%	5.1%
Firearm Related	2,607	2,819	2,873	3,036	2,607	3,251	3,413	2,688	2,833	2,808	-0.9%	7.7%
Percent Firearm	28.9%	29.6%	29.6%	31.0%	29.0%	31.6%	31.4%	29.0%	29.6%	29.7%		
Aggravated Assault	17,744	18,223	18,633	17,627	17,148	18,078	18,434	17,763	17,231	16,970	-1.5%	-4.4%
Firearm Related	1,697	1,839	2,013	2,116	1,908	2,287	2,530	2,343	2,283	2,281	-0.1%	34.4%
Percent Firearm	9.6%	10.1%	10.8%	12.0%	11.1%	12.7%	13.7%	13.2%	13.2%	13.4%		

Source: DCJS, Uniform Crime/Incident-Based Reporting systems.
Includes all reports received as of 4/14/10.