

Division of Criminal Justice Services
Office of Justice Research & Performance



New York State Crime Report

Andrew M. Cuomo
 Governor

Sean M. Byrne
 Acting Commissioner

Crime in New York State 2010 Final Data

This report and the attached appendices provide the most recent information available on the number of Index crimes and rates per 100,000 population for each county in New York State. County population data are provided every year by the FBI based on U.S. Census estimates and are used to calculate crime rates. Crime counts are based on official crime reports submitted to DCJS through the Uniform Crime Reporting (UCR) and Incident Based Reporting (IBR) programs. Index offenses include the *violent* crimes of murder, forcible rape, robbery and aggravated assault, and the *property* crimes of burglary, larceny, and motor vehicle theft. Because of their seriousness and frequency, these crimes are used by DCJS and the FBI as indicators of overall crime trends.

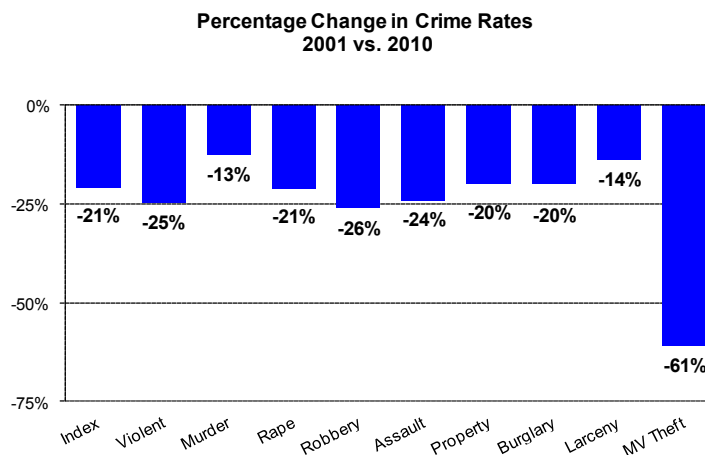
The summary includes information on crimes reported in New York State for the last 10 years. These figures include all reports received by DCJS as of September 12, 2011. They differ slightly from those published by the FBI; the FBI reports include estimations for agencies with incomplete reporting, and exclude data submitted after FBI deadlines.

Detailed information on crime data for each reporting agency from 2006 through 2010 is available on the DCJS website:
http://criminaljustice.state.ny.us/crimnet/ojsa/indexcrimes/county_totals.htm

New York State has experienced significant declines in both the crime *rate*—or the number of “Index” crimes per capita—and the crime *volume*—the total number of Index crimes reported over the past decade while the population of the state has increased.

Change in Crime Rates: 2001 vs. 2010

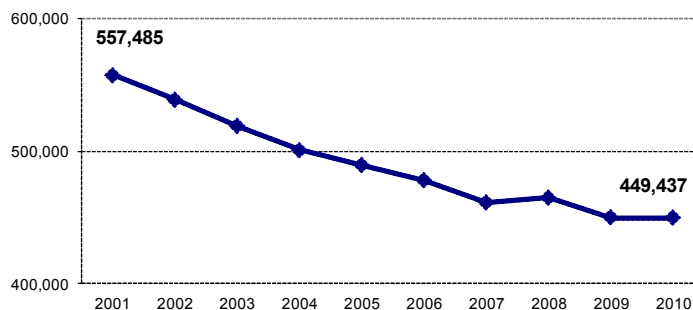
Over the past 10 years, the overall rate of Index crimes per 100,000 residents declined 21 percent; the rate of violent crimes (murder, rape, robbery, and aggravated assault) fell 25% and property crimes (burglary, larceny, and motor vehicle theft) were down 20%. The largest reductions in crime rates were reported for motor vehicle theft, and robbery (see Appendix 1 for a state-wide, annualized comparison of crime rates).



Change in Crime Volume: 2001 vs. 2010

While New York State's crime rate has decreased over the past 10 years, New York has also reported a significant reduction in the actual number of crimes reported. Index crimes fell each year between 2001 and 2010 with the exception of a slight rise in 2008. The number of major crimes reached the lowest levels ever recorded in 2010, when there were 108,048 fewer crimes reported than in 2001. The State's population increased by approximately 360,000 residents during the same time period.

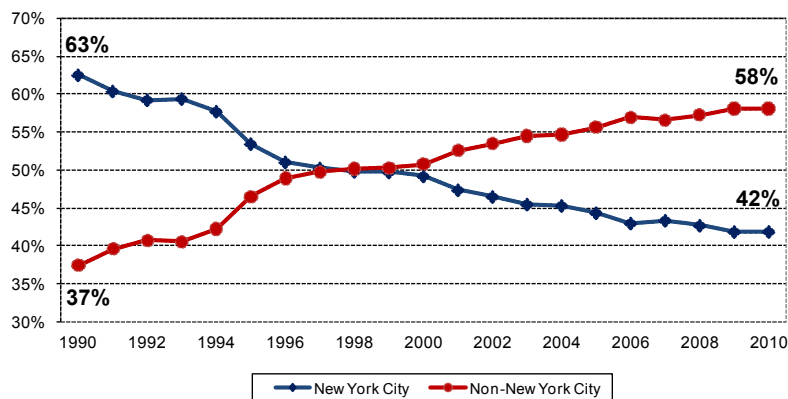
New York State Index Crime Counts



Trends in Regional Crime: 2001 to 2010

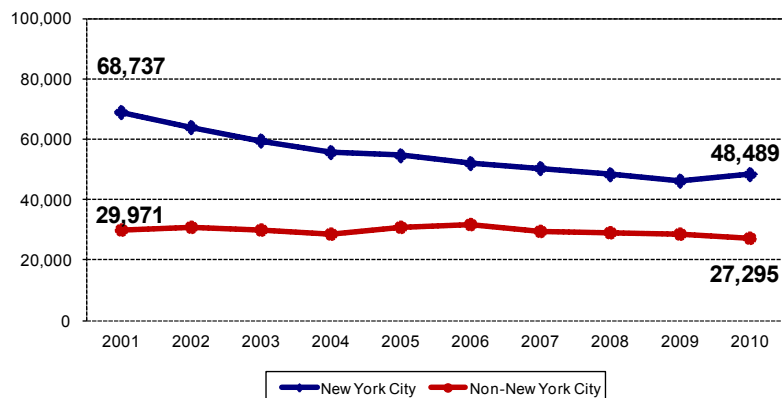
Not all areas of the State have benefited equally from the historic reduction in crime. The decline in Index crime in New York City was much larger than that experienced in counties outside of New York City (See Appendix 2).

Regional Crime as a Percent of Statewide Crime



Given the greater decline in crime in New York City, the proportion of statewide crime that each region accounted for has shifted dramatically. The counties outside New York City now account for 58% of the reported crime statewide, as compared to 50% in 2000 and 37% in 1990.

Regional Trends in Violent Crime

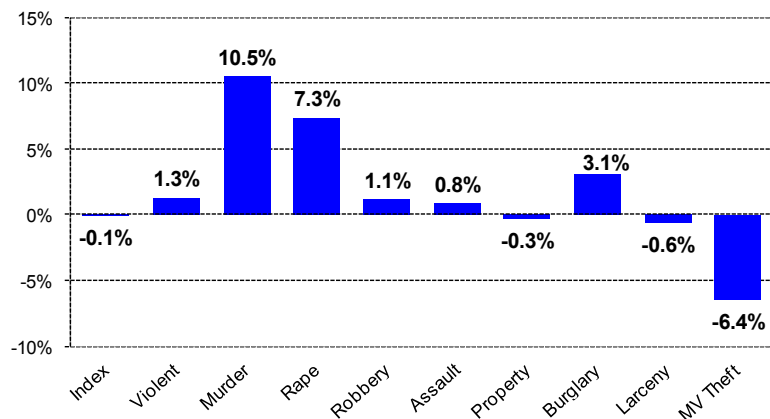


While a higher proportion of the State's violent crimes occurred in New York City, that region reported a nearly 30% drop in violent crimes since 2001, while the non-New York City counties reported a decrease of almost 9%. Both regions report declines in each violent crime category during the last 10 years except for a slight increase in murders in non-New York City (See Appendix 2).

Recent Statewide Crime Trends: 2009 vs. 2010

The most recent 2010 crime data show that crime volume in New York State was relatively unchanged between 2009 and 2010.

**Percentage Change in Crime Volume
2009 vs. 2010**



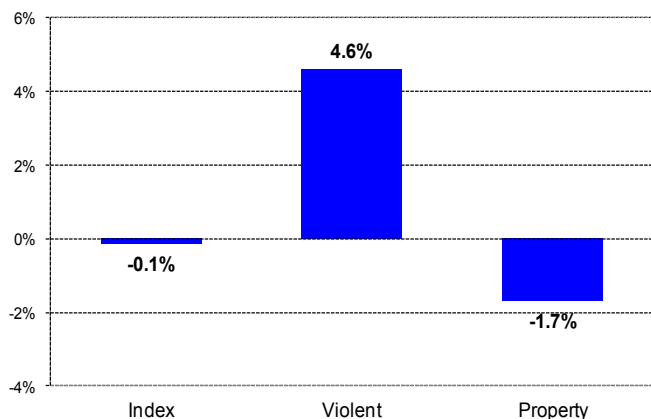
In 2010, New York State reported a slight drop of 0.1% in the seven major Index crimes as compared to 2009.

A 1.3% percent increase in violent crime categories was offset by a 0.3% decline in the higher volume property crime categories. Increases were reported in each Index offense except larceny (-0.6%) and motor vehicle theft (-6.4%). Murders rose 10.5% and forcible rapes increased by 7.3%.

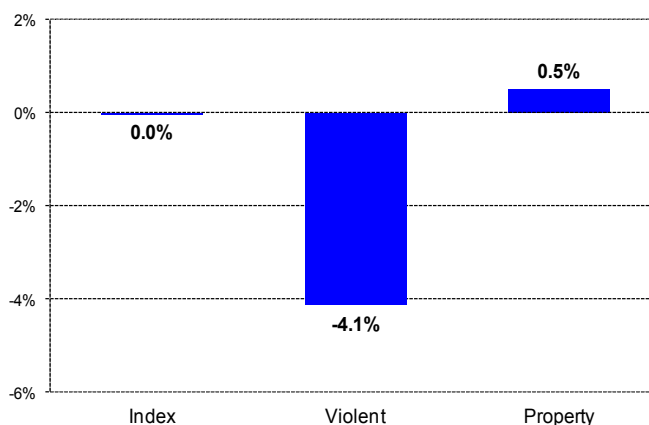
Percentage Change in Crime by Region: 2009 vs. 2010

The New York City region reported a 4.6% increase in violent crimes between 2009 and 2010, while the rest of the State reported a 4.1% decline. Alternatively, property crimes dropped 1.7% in New York City and rose slightly (0.5%) in the rest of the State (crime counts for 2009 and 2010 are presented for each county in Appendix 3; county crime rates for 2010 are provided in Appendix 4).

New York City

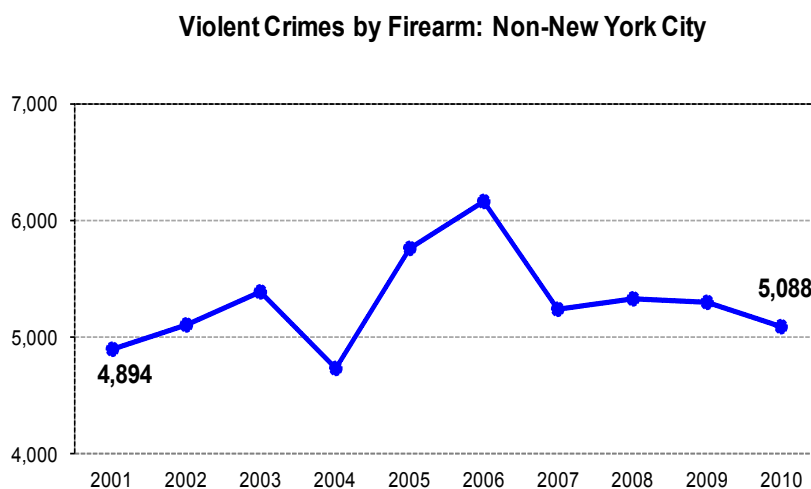


Non-New York City



Trends in Violent Crimes by Firearm: 2001 to 2010

The Uniform Crime Reporting system includes information provided by law enforcement regarding the number of violent crimes reported which involved the use of a firearm. Currently, these figures are only available from the non-New York City region. Over the last 10 years, there has been a general increase in the use of firearms in violent crimes, with the highest count reported in 2006 (6,164 or 19% of violent crimes). In 2010, there were 5,078 reported violent crime incidents which involved a firearm, a decrease of 4% over 2009, and an increase of 4% over 2001. Appendix 5 provides counts of firearm related crimes for each of the violent Index



Appendix 5 shows that during 2010, 200 of 329 murders reported outside of New York City involved a firearm (61%). This was the highest proportion by firearm over the last 10 years, up from 53% in 2001. The number of firearm-related robberies decreased by 10% over 2001, but the proportion by firearm has remained relatively stable at approximately 30%. The number of aggravated assaults fell by 1,764 between 2001 and 2010, but the number by firearm rose from 1,839 to 2,330 (+27%).

Appendix 1

New York State Index Crime Counts and Rates per 100,000 Population: 2001 - 2010

Counts	2001	2002	2003	2004	2005	2006	2007	2008	2009	2010	% change	
											2009-10	2001-10
Index Crime	557,485	538,909	519,082	500,572	489,371	477,845	460,968	464,557	449,693	449,437	-0.1%	-19.4%
Violent Crime	98,708	94,597	89,365	84,274	85,523	83,812	79,817	77,417	74,824	75,784	1.3%	-23.2%
Murder	971	905	925	899	875	927	808	835	783	865	10.5%	-10.9%
Forcible Rape	3,448	3,774	3,770	3,561	3,615	3,165	2,925	2,786	2,572	2,761	7.3%	-19.9%
Robbery	37,717	36,946	35,778	33,350	35,003	34,379	31,035	31,736	28,068	28,390	1.1%	-24.7%
Agg. Assault	56,572	52,972	48,892	46,464	46,030	45,341	45,049	42,060	43,401	43,768	0.8%	-22.6%
Property Crime	458,777	444,312	429,717	416,298	403,848	394,033	381,151	387,140	374,869	373,653	-0.3%	-18.6%
Burglary	79,132	76,494	75,417	69,923	67,798	68,484	64,828	65,490	62,656	64,573	3.1%	-18.4%
Larceny	328,439	319,502	309,162	305,597	300,515	293,463	288,351	296,563	290,433	288,702	-0.6%	-12.1%
MV Theft	51,206	48,316	45,138	40,778	35,535	32,086	27,972	25,087	21,780	20,378	-6.4%	-60.2%
Rates per 100,000 Pop.	2001	2002	2003	2004	2005	2006	2007	2008	2009	2010	% change	
											2009-10	2001-10
Index Crime	2,932.4	2,813.0	2,704.9	2,603.5	2,541.6	2,475.6	2,389.2	2,384.0	2,301.7	2,319.8	0.8%	-20.9%
Violent Crime	519.2	493.8	465.7	438.3	444.2	434.2	413.7	397.3	383.0	391.2	2.1%	-24.7%
Murder	5.1	4.7	4.8	4.7	4.5	4.8	4.2	4.3	4.0	4.5	11.4%	-12.6%
Forcible Rape	18.1	19.7	19.6	18.5	18.8	16.4	15.2	14.3	13.2	14.3	8.3%	-21.4%
Robbery	198.4	192.9	186.4	173.5	181.8	178.1	160.9	162.9	143.7	146.5	2.0%	-26.1%
Agg. Assault	297.6	276.5	254.8	241.7	239.1	234.9	233.5	215.8	222.1	225.9	1.7%	-24.1%
Property Crime	2,413.2	2,319.3	2,239.3	2,165.2	2,097.4	2,041.4	1,975.5	1,986.7	1,918.7	1,928.6	0.5%	-20.1%
Burglary	416.2	399.3	393.0	363.7	352.1	354.8	336.0	336.1	320.7	333.3	3.9%	-19.9%
Larceny	1,727.6	1,667.8	1,611.0	1,589.4	1,560.7	1,520.4	1,494.5	1,521.9	1,486.5	1,490.1	0.2%	-13.7%
MV Theft	269.3	252.2	235.2	212.1	184.6	166.2	145.0	128.7	111.5	105.2	-5.6%	-60.9%

Source: DCJS, Uniform Crime/Incident-Based Reporting systems.
Includes all reports received as of 9/12/2011.

Appendix 2

New York State Index Crime Summary by Region: 2001 - 2010

NEW YORK CITY	2001	2002	2003	2004	2005	2006	2007	2008	2009	2010	% change	
											2009-10	2001-10
Index Crime	264,225	250,631	236,215	226,876	217,132	205,522	199,941	198,419	188,357	188,104	-0.1%	-28.8%
Violent Crime	68,737	63,840	59,448	55,688	54,623	52,086	50,453	48,430	46,357	48,489	4.6%	-29.5%
Murder	649	587	597	570	539	596	496	523	471	536	13.8%	-17.4%
Forcible Rape	1,533	1,689	1,609	1,428	1,412	1,071	875	890	832	1,036	24.5%	-32.4%
Robbery	28,206	27,229	25,989	24,373	24,722	23,511	21,787	22,186	18,597	19,608	5.4%	-30.5%
Agg. Assault	38,349	34,335	31,253	29,317	27,950	26,908	27,295	24,831	26,457	27,309	3.2%	-28.8%
Property Crime	195,488	186,791	176,767	171,188	162,509	153,436	149,488	149,989	142,000	139,615	-1.7%	-28.6%
Burglary	31,564	30,102	28,293	26,100	23,210	22,137	20,914	19,867	18,780	17,926	-4.5%	-43.2%
Larceny	133,928	129,655	124,846	124,016	120,918	115,363	115,318	117,682	112,526	111,370	-1.0%	-16.8%
MV Theft	29,996	27,034	23,628	21,072	18,381	15,936	13,256	12,440	10,694	10,319	-3.5%	-65.6%
NON-NEW YORK CITY	2001	2002	2003	2004	2005	2006	2007	2008	2009	2010	% change	
											2009-10	2001-10
Index Crime	293,260	288,278	282,867	273,696	272,239	272,323	261,027	266,138	261,336	261,333	0.0%	-10.9%
Violent Crime	29,971	30,757	29,917	28,586	30,900	31,726	29,364	28,987	28,467	27,295	-4.1%	-8.9%
Murder	322	318	328	329	336	331	312	312	312	329	5.4%	2.2%
Forcible Rape	1,915	2,085	2,124	2,133	2,203	2,094	2,050	1,896	1,740	1,725	-0.9%	-9.9%
Robbery	9,511	9,717	9,789	8,977	10,281	10,868	9,248	9,550	9,471	8,782	-7.3%	-7.7%
Agg. Assault	18,223	18,637	17,639	17,147	18,080	18,433	17,754	17,229	16,944	16,459	-2.9%	-9.7%
Property Crime	263,289	257,521	252,950	245,110	241,339	240,597	231,663	237,151	232,869	234,038	0.5%	-11.1%
Burglary	47,568	46,392	47,124	43,823	44,588	46,347	43,914	45,623	43,876	46,647	6.3%	-1.9%
Larceny	194,511	189,847	184,316	181,581	179,597	178,100	173,033	178,881	177,907	177,332	-0.3%	-8.8%
MV Theft	21,210	21,282	21,510	19,706	17,154	16,150	14,716	12,647	11,086	10,059	-9.3%	-52.6%

Note: New York City data reported from 2000 to 2002 differs slightly from what the NYPD reports.

Source: DCJS, Uniform Crime/Incident-Based Reporting systems.
Includes all reports received as of 9/12/2011.

Appendix 3
New York State Index Crime Summary by County
 2009 vs. 2010

County	Year	Total	Violent	Forcible			Agg.	Property	Burglary	Larceny	MV
				Murder	Rape	Robbery	Assault				Theft
Albany	2009	10,613	1,290	12	61	400	817	9,323	1,521	7,451	351
	2010	11,044	1,187	3	62	369	753	9,857	1,594	7,907	356
	% change	4.1%	-8.0%	-75.0%	1.6%	-7.8%	-7.8%	5.7%	4.8%	6.1%	1.4%
Allegany	2009	774	129	0	45	4	80	645	203	425	17
	2010	835	89	0	11	6	72	746	161	571	14
	% change	7.9%	-31.0%	NA	-75.6%	50.0%	-10.0%	15.7%	-20.7%	34.4%	-17.6%
Bronx	2009	33,755	11,242	113	163	4,132	6,834	22,513	3,563	16,525	2,425
	2010	34,008	12,070	127	191	4,647	7,105	21,938	3,223	16,552	2,163
	% change	0.7%	7.4%	12.4%	17.2%	12.5%	4.0%	-2.6%	-9.5%	0.2%	-10.8%
Broome	2009	6,170	458	20	42	94	302	5,712	826	4,780	106
	2010	6,205	499	7	45	116	331	5,706	975	4,643	88
	% change	0.6%	9.0%	-65.0%	7.1%	23.4%	9.6%	-0.1%	18.0%	-2.9%	-17.0%
Cattaraugus	2009	1,852	184	1	25	13	145	1,668	308	1,322	38
	2010	2,003	181	1	22	15	143	1,822	430	1,351	41
	% change	8.2%	-1.6%	0.0%	-12.0%	15.4%	-1.4%	9.2%	39.6%	2.2%	7.9%
Cayuga	2009	1,660	186	2	23	28	133	1,474	325	1,126	23
	2010	1,764	158	0	13	14	131	1,606	304	1,276	26
	% change	6.3%	-15.1%	-100.0%	-43.5%	-50.0%	-1.5%	9.0%	-6.5%	13.3%	13.0%
Chautauqua	2009	3,594	256	2	35	45	174	3,338	667	2,611	60
	2010	3,863	312	2	42	65	203	3,551	828	2,638	85
	% change	7.5%	21.9%	0.0%	20.0%	44.4%	16.7%	6.4%	24.1%	1.0%	41.7%
Chemung	2009	2,126	161	4	13	29	115	1,965	385	1,535	45
	2010	2,080	203	4	11	39	149	1,877	399	1,431	47
	% change	-2.2%	26.1%	0.0%	-15.4%	34.5%	29.6%	-4.5%	3.6%	-6.8%	4.4%
Chenango	2009	990	53	0	11	7	35	937	208	711	18
	2010	976	54	0	16	4	34	922	190	716	16
	% change	-1.4%	1.9%	NA	45.5%	-42.9%	-2.9%	-1.6%	-8.7%	0.7%	-11.1%
Clinton	2009	1,698	133	1	19	12	101	1,565	389	1,142	34
	2010	1,829	87	3	21	11	52	1,742	323	1,381	38
	% change	7.7%	-34.6%	200.0%	10.5%	-8.3%	-48.5%	11.3%	-17.0%	20.9%	11.8%
Columbia	2009	1,174	111	0	8	6	97	1,063	295	754	14
	2010	1,134	88	1	10	6	71	1,046	235	788	23
	% change	-3.4%	-20.7%	NA	25.0%	0.0%	-26.8%	-1.6%	-20.3%	4.5%	64.3%
Cortland	2009	1,084	106	0	13	15	78	978	227	722	29
	2010	1,066	65	0	10	11	44	1,001	237	727	37
	% change	-1.7%	-38.7%	NA	-23.1%	-26.7%	-43.6%	2.4%	4.4%	0.7%	27.6%

Appendix 3
New York State Index Crime Summary by County
 2009 vs. 2010

County	Year	Total	Violent	Forcible			Agg.	Property	Burglary	Larceny	MV
				Murder	Rape	Robbery	Assault				Theft
Delaware	2009	753	69	0	10	5	54	684	188	485	11
	2010	763	61	1	7	3	50	702	212	467	23
	% change	1.3%	-11.6%	NA	-30.0%	-40.0%	-7.4%	2.6%	12.8%	-3.7%	109.1%
Dutchess	2009	6,095	909	4	35	282	588	5,186	881	4,137	168
	2010	5,684	711	13	41	209	448	4,973	968	3,867	138
	% change	-6.7%	-21.8%	225.0%	17.1%	-25.9%	-23.8%	-4.1%	9.9%	-6.5%	-17.9%
Erie	2009	32,656	4,915	66	212	1,919	2,718	27,741	5,993	19,730	2,018
	2010	32,561	4,528	62	234	1,684	2,548	28,033	6,534	19,665	1,834
	% change	-0.3%	-7.9%	-6.1%	10.4%	-12.2%	-6.3%	1.1%	9.0%	-0.3%	-9.1%
Essex	2009	519	49	0	8	1	40	470	148	310	12
	2010	523	37	0	9	0	28	486	157	314	15
	% change	0.8%	-24.5%	NA	12.5%	-100.0%	-30.0%	3.4%	6.1%	1.3%	25.0%
Franklin	2009	936	65	0	10	4	51	871	230	613	28
	2010	942	57	0	16	1	40	885	245	613	27
	% change	0.6%	-12.3%	NA	60.0%	-75.0%	-21.6%	1.6%	6.5%	0.0%	-3.6%
Fulton	2009	1,522	112	1	20	11	80	1,410	287	1,080	43
	2010	1,689	123	1	17	17	88	1,566	359	1,153	54
	% change	11.0%	9.8%	0.0%	-15.0%	54.5%	10.0%	11.1%	25.1%	6.8%	25.6%
Genesee	2009	1,497	92	1	17	17	57	1,405	212	1,156	37
	2010	1,463	107	0	17	20	70	1,356	233	1,089	34
	% change	-2.3%	16.3%	-100.0%	0.0%	17.6%	22.8%	-3.5%	9.9%	-5.8%	-8.1%
Greene	2009	853	102	1	7	6	88	751	208	520	23
	2010	820	92	0	8	9	75	728	224	471	33
	% change	-3.9%	-9.8%	-100.0%	14.3%	50.0%	-14.8%	-3.1%	7.7%	-9.4%	43.5%
Hamilton	2009	51	2	0	0	0	2	49	15	34	0
	2010	52	4	0	1	1	2	48	17	29	2
	% change	2.0%	100.0%	NA	NA	NA	0.0%	-2.0%	13.3%	-14.7%	NA
Herkimer	2009	1,369	168	0	18	17	133	1,201	235	954	12
	2010	1,355	165	0	15	7	143	1,190	266	900	24
	% change	-1.0%	-1.8%	NA	-16.7%	-58.8%	7.5%	-0.9%	13.2%	-5.7%	100.0%
Jefferson	2009	2,701	224	4	33	20	167	2,477	453	1,972	52
	2010	2,425	217	6	20	26	165	2,208	394	1,760	54
	% change	-10.2%	-3.1%	50.0%	-39.4%	30.0%	-1.2%	-10.9%	-13.0%	-10.8%	3.8%
Kings	2009	55,816	15,803	201	253	6,292	9,057	40,013	6,262	30,292	3,459
	2010	57,172	16,514	222	323	6,684	9,285	40,658	6,421	30,900	3,337
	% change	2.4%	4.5%	10.4%	27.7%	6.2%	2.5%	1.6%	2.5%	2.0%	-3.5%

Appendix 3
New York State Index Crime Summary by County
 2009 vs. 2010

County	Year	Total	Forcible				Agg.		Burglary	Larceny	MV Theft
			Violent	Murder	Rape	Robbery	Assault	Property			
Lewis	2009	387	23	1	5	2	15	364	121	227	16
	2010	461	25	0	3	2	20	436	185	235	16
	% change	19.1%	8.7%	-100.0%	-40.0%	0.0%	33.3%	19.8%	52.9%	3.5%	0.0%
Livingston	2009	998	69	1	11	7	50	929	125	785	19
	2010	1,155	47	2	10	5	30	1,108	145	955	8
	% change	15.7%	-31.9%	100.0%	-9.1%	-28.6%	-40.0%	19.3%	16.0%	21.7%	-57.9%
Madison	2009	1,240	53	0	10	11	32	1,187	237	928	22
	2010	1,221	49	1	10	7	31	1,172	205	947	20
	% change	-1.5%	-7.5%	NA	0.0%	-36.4%	-3.1%	-1.3%	-13.5%	2.0%	-9.1%
Monroe	2009	25,735	2,606	32	171	1,008	1,395	23,129	4,561	17,227	1,341
	2010	25,998	2,821	47	161	959	1,654	23,177	5,227	16,922	1,028
	% change	1.0%	8.3%	46.9%	-5.8%	-4.9%	18.6%	0.2%	14.6%	-1.8%	-23.3%
Montgomery	2009	726	131	0	0	6	125	595	107	473	15
	2010	1,163	72	1	2	12	57	1,091	200	861	30
	% change	60.2%	-45.0%	NA	NA	100.0%	-54.4%	83.4%	86.9%	82.0%	100.0%
Nassau	2009	21,828	2,496	30	94	1,200	1,172	19,332	2,571	15,211	1,550
	2010	20,310	2,342	28	79	1,077	1,158	17,968	2,650	14,164	1,154
	% change	-7.0%	-6.2%	-6.7%	-16.0%	-10.3%	-1.2%	-7.1%	3.1%	-6.9%	-25.5%
New York	2009	52,899	8,710	59	191	3,781	4,679	44,189	3,612	39,495	1,082
	2010	51,297	8,829	70	282	3,787	4,690	42,468	2,967	38,514	987
	% change	-3.0%	1.4%	18.6%	47.6%	0.2%	0.2%	-3.9%	-17.9%	-2.5%	-8.8%
Niagara	2009	7,164	847	9	48	237	553	6,317	1,624	4,429	264
	2010	7,144	830	5	54	244	527	6,314	1,702	4,367	245
	% change	-0.3%	-2.0%	-44.4%	12.5%	3.0%	-4.7%	0.0%	4.8%	-1.4%	-7.2%
Oneida	2009	6,546	638	8	43	177	410	5,908	1,088	4,679	141
	2010	6,217	584	7	45	173	359	5,633	1,203	4,266	164
	% change	-5.0%	-8.5%	-12.5%	4.7%	-2.3%	-12.4%	-4.7%	10.6%	-8.8%	16.3%
Onondaga	2009	13,397	1,675	20	99	499	1,057	11,722	3,020	8,214	488
	2010	13,000	1,608	17	105	463	1,023	11,392	3,037	7,814	541
	% change	-3.0%	-4.0%	-15.0%	6.1%	-7.2%	-3.2%	-2.8%	0.6%	-4.9%	10.9%
Ontario	2009	1,870	139	4	23	33	79	1,731	300	1,397	34
	2010	1,993	128	1	28	24	75	1,865	336	1,493	36
	% change	6.6%	-7.9%	-75.0%	21.7%	-27.3%	-5.1%	7.7%	12.0%	6.9%	5.9%
Orange	2009	8,762	942	9	46	321	566	7,820	1,096	6,461	263
	2010	9,144	995	17	51	338	589	8,149	1,227	6,683	239
	% change	4.4%	5.6%	88.9%	10.9%	5.3%	4.1%	4.2%	12.0%	3.4%	-9.1%

Appendix 3
New York State Index Crime Summary by County
 2009 vs. 2010

County	Year	Total Violent	Forcible			Agg.			Burglary	Larceny	MV Theft
			Murder	Rape	Robbery	Assault	Property				
Orleans	2009	1,266	71	0	14	9	48	1,195	319	835	41
	2010	1,061	79	0	6	10	63	982	227	706	49
	% change	-16.2%	11.3%	NA	-57.1%	11.1%	31.3%	-17.8%	-28.8%	-15.4%	19.5%
Oswego	2009	2,787	176	1	31	26	118	2,611	655	1,878	78
	2010	3,287	189	3	29	31	126	3,098	768	2,226	104
	% change	17.9%	7.4%	200.0%	-6.5%	19.2%	6.8%	18.7%	17.3%	18.5%	33.3%
Otsego	2009	1,201	140	0	18	18	104	1,061	324	719	18
	2010	1,145	127	0	14	10	103	1,018	267	724	27
	% change	-4.7%	-9.3%	NA	-22.2%	-44.4%	-1.0%	-4.1%	-17.6%	0.7%	50.0%
Putnam	2009	963	85	0	6	15	64	878	187	655	36
	2010	933	68	2	6	10	50	865	189	652	24
	% change	-3.1%	-20.0%	NA	0.0%	-33.3%	-21.9%	-1.5%	1.1%	-0.5%	-33.3%
Queens	2009	38,925	9,299	82	192	3,997	5,028	29,626	4,714	21,612	3,300
	2010	38,808	9,725	100	196	4,066	5,363	29,083	4,704	20,895	3,484
	% change	-0.3%	4.6%	22.0%	2.1%	1.7%	6.7%	-1.8%	-0.2%	-3.3%	5.6%
Rensselaer	2009	4,808	513	3	29	188	293	4,295	988	3,127	180
	2010	4,831	546	2	38	162	344	4,285	959	3,096	230
	% change	0.5%	6.4%	-33.3%	31.0%	-13.8%	17.4%	-0.2%	-2.9%	-1.0%	27.8%
Richmond	2009	6,962	1,303	16	33	395	859	5,659	629	4,602	428
	2010	6,819	1,351	17	44	424	866	5,468	611	4,509	348
	% change	-2.1%	3.7%	6.3%	33.3%	7.3%	0.8%	-3.4%	-2.9%	-2.0%	-18.7%
Rockland	2009	4,987	473	2	18	149	304	4,514	498	3,863	153
	2010	4,760	460	2	20	146	292	4,300	571	3,606	123
	% change	-4.6%	-2.7%	0.0%	11.1%	-2.0%	-3.9%	-4.7%	14.7%	-6.7%	-19.6%
Saratoga	2009	2,923	173	1	24	37	111	2,750	473	2,214	63
	2010	3,236	151	0	22	26	103	3,085	549	2,457	79
	% change	10.7%	-12.7%	-100.0%	-8.3%	-29.7%	-7.2%	12.2%	16.1%	11.0%	25.4%
Schenectady	2009	5,829	652	7	41	258	346	5,177	1,019	3,900	258
	2010	6,018	747	8	55	280	404	5,271	1,140	3,911	220
	% change	3.2%	14.6%	14.3%	34.1%	8.5%	16.8%	1.8%	11.9%	0.3%	-14.7%
Schoharie	2009	572	27	1	4	4	18	545	145	391	9
	2010	467	17	0	2	3	12	450	98	343	9
	% change	-18.4%	-37.0%	-100.0%	-50.0%	-25.0%	-33.3%	-17.4%	-32.4%	-12.3%	0.0%
Schuyler	2009	173	18	0	4	1	13	155	37	113	5
	2010	197	10	0	1	2	7	187	32	148	7
	% change	13.9%	-44.4%	NA	-75.0%	100.0%	-46.2%	20.6%	-13.5%	31.0%	40.0%

Appendix 3
New York State Index Crime Summary by County
 2009 vs. 2010

County	Year	Total	Violent	Forcible			Agg.	Property	Burglary	Larceny	MV
				Murder	Rape	Robbery	Assault				Theft
Seneca	2009	649	48	0	3	5	40	601	124	458	19
	2010	656	52	0	14	4	34	604	119	476	9
	% change	1.1%	8.3%	NA	366.7%	-20.0%	-15.0%	0.5%	-4.0%	3.9%	-52.6%
St Lawrence	2009	1,815	195	0	38	11	146	1,620	416	1,166	38
	2010	2,403	138	2	23	19	94	2,265	463	1,748	54
	% change	32.4%	-29.2%	NA	-39.5%	72.7%	-35.6%	39.8%	11.3%	49.9%	42.1%
Steuben	2009	1,399	134	2	23	11	98	1,265	280	963	22
	2010	1,837	164	2	18	13	131	1,673	370	1,259	44
	% change	31.3%	22.4%	0.0%	-21.7%	18.2%	33.7%	32.3%	32.1%	30.7%	100.0%
Suffolk	2009	32,600	2,739	33	85	1,058	1,563	29,861	4,555	23,645	1,661
	2010	32,621	2,377	52	68	877	1,380	30,244	4,815	23,831	1,598
	% change	0.1%	-13.2%	57.6%	-20.0%	-17.1%	-11.7%	1.3%	5.7%	0.8%	-3.8%
Sullivan	2009	1,543	185	2	22	28	133	1,358	433	891	34
	2010	1,706	218	3	23	34	158	1,488	433	1,004	51
	% change	10.6%	17.8%	50.0%	4.5%	21.4%	18.8%	9.6%	0.0%	12.7%	50.0%
Tioga	2009	555	30	0	4	0	26	525	122	386	17
	2010	560	36	0	4	6	26	524	130	384	10
	% change	0.9%	20.0%	NA	0.0%	NA	0.0%	-0.2%	6.6%	-0.5%	-41.2%
Tompkins	2009	2,558	153	3	12	39	99	2,405	373	1,999	33
	2010	2,504	120	2	16	28	74	2,384	313	2,028	43
	% change	-2.1%	-21.6%	-33.3%	33.3%	-28.2%	-25.3%	-0.9%	-16.1%	1.5%	30.3%
Ulster	2009	3,898	445	1	27	98	319	3,453	709	2,627	117
	2010	3,839	408	2	31	63	312	3,431	707	2,616	108
	% change	-1.5%	-8.3%	100.0%	14.8%	-35.7%	-2.2%	-0.6%	-0.3%	-0.4%	-7.7%
Warren	2009	1,444	77	0	6	7	64	1,367	173	1,169	25
	2010	1,286	96	0	17	9	70	1,190	191	984	15
	% change	-10.9%	24.7%	NA	183.3%	28.6%	9.4%	-12.9%	10.4%	-15.8%	-40.0%
Washington	2009	769	60	0	9	4	47	709	164	515	30
	2010	879	93	0	17	5	71	786	223	534	29
	% change	14.3%	55.0%	NA	88.9%	25.0%	51.1%	10.9%	36.0%	3.7%	-3.3%
Wayne	2009	1,774	140	0	21	25	94	1,634	399	1,187	48
	2010	1,955	168	0	21	15	132	1,787	481	1,261	45
	% change	10.2%	20.0%	NA	0.0%	-40.0%	40.4%	9.4%	20.6%	6.2%	-6.3%
Westchester	2009	16,633	2,482	22	77	1,042	1,341	14,151	2,250	11,003	898
	2010	15,320	2,454	19	75	1,090	1,270	12,866	1,978	10,214	674
	% change	-7.9%	-1.1%	-13.6%	-2.6%	4.6%	-5.3%	-9.1%	-12.1%	-7.2%	-24.9%

Appendix 3
New York State Index Crime Summary by County
 2009 vs. 2010

County	Year	Total	Violent	Forcible			Agg.	Property	Burglary	Larceny	MV
				Murder	Rape	Robbery	Assault				Theft
Wyoming	2009	500	47	0	6	1	40	453	101	342	10
	2010	476	33	0	4	0	29	443	94	339	10
	% change	-4.8%	-29.8%	NA	-33.3%	-100.0%	-27.5%	-2.2%	-6.9%	-0.9%	0.0%
Yates	2009	350	11	1	3	1	6	339	78	260	1
	2010	474	18	0	5	2	11	456	128	321	7
	% change	35.4%	63.6%	-100.0%	66.7%	100.0%	83.3%	34.5%	64.1%	23.5%	600.0%

Note: NA indicates that the percentage change is not applicable because the count in 2009 was zero.

Source: DCJS, Uniform Crime/Incident-Based Reporting systems.
 Includes all reports received as of 9/12/2011.

Appendix 4

New York State Index Crime Summary by County: 2010
Rates per 100,000 Population

County	Crime Rate			County	Crime Rate		
	Index	Violent	Property		Index	Violent	Property
Albany	3,740.3	402.0	3,338.3	Onondaga	2,893.1	357.9	2,535.3
Allegany	1,720.5	183.4	1,537.2	Ontario	1,897.9	121.9	1,776.0
Bronx	2,450.2	869.6	1,580.6	Orange	2,384.5	259.5	2,125.0
Broome	3,233.6	260.0	2,973.5	Orleans	2,564.2	190.9	2,373.3
Cattaraugus	2,614.8	236.3	2,378.5	Oswego	2,741.3	157.6	2,583.7
Cayuga	2,250.0	201.5	2,048.5	Otsego	1,880.0	208.5	1,671.5
Chautauqua	2,939.6	237.4	2,702.2	Putnam	947.5	69.1	878.4
Chemung	2,388.8	233.1	2,155.7	Queens	1,693.7	424.4	1,269.3
Chenango	1,952.9	108.0	1,844.8	Rensselaer	3,135.2	354.3	2,780.9
Clinton	2,261.5	107.6	2,154.0	Richmond	1,396.0	276.6	1,119.4
Columbia	1,865.6	144.8	1,720.8	Rockland	1,596.8	154.3	1,442.5
Cortland	2,248.9	137.1	2,111.8	St Lawrence	2,219.4	127.5	2,091.9
Delaware	1,734.2	138.6	1,595.6	Saratoga	1,474.1	68.8	1,405.3
Dutchess	1,949.6	243.9	1,705.8	Schenectady	3,984.5	494.6	3,489.9
Erie	3,637.5	505.8	3,131.6	Schoharie	1,498.3	54.5	1,443.7
Essex	1,454.2	102.9	1,351.4	Schuyler	1,067.5	54.2	1,013.3
Franklin	1,897.9	114.8	1,783.1	Seneca	1,944.3	154.1	1,790.2
Fulton	3,108.0	226.3	2,881.6	Steuben	1,928.6	172.2	1,756.4
Genesee	2,572.5	188.1	2,384.3	Suffolk	2,158.6	157.3	2,001.3
Greene	1,691.5	189.8	1,501.7	Sullivan	2,270.5	290.1	1,980.4
Hamilton	1,077.9	82.9	995.0	Tioga	1,135.0	73.0	1,062.0
Herkimer	2,209.4	269.0	1,940.3	Tompkins	2,475.3	118.6	2,356.7
Jefferson	2,052.8	183.7	1,869.1	Ulster	2,135.6	227.0	1,908.6
Kings	2,242.0	647.6	1,594.4	Warren	1,961.9	146.5	1,815.4
Lewis	1,787.9	97.0	1,690.9	Washington	1,412.6	149.5	1,263.1
Livingston	1,862.3	75.8	1,786.5	Wayne	2,171.6	186.6	1,985.0
Madison	1,763.9	70.8	1,693.1	Westchester	1,615.5	258.8	1,356.7
Monroe	3,586.2	389.1	3,197.1	Wyoming	1,168.3	81.0	1,087.3
Montgomery	2,424.5	150.1	2,274.4	Yates	1,960.1	74.4	1,885.7
Nassau	1,510.8	174.2	1,336.6				
New York	3,170.0	545.6	2,624.4	New York City	2,256.5	581.7	1,674.8
Niagara	3,375.4	392.2	2,983.2	Non-New York City	2,367.5	247.3	2,120.3
Oneida	2,726.0	256.1	2,470.0	New York State	2,319.8	391.2	1,928.6

Source: DCJS, Uniform Crime/Incident-Based Reporting systems.
Includes all reports received as of 9/12/2011.

Appendix 5
Violent Crimes and Firearms
Non-New York City Region

	2001	2002	2003	2004	2005	2006	2007	2008	2009	2010	09 vs. 10 % Change	01 vs. 10 % Change
Violent Crimes	29,971	30,757	29,917	28,586	30,900	31,726	29,364	28,987	28,467	27,295	-4.1%	-8.9%
Firearm Related	4,894	5,108	5,383	4,726	5,759	6,163	5,236	5,329	5,300	5,088	-4.0%	4.0%
Percent Firearm	16.3%	16.6%	18.0%	16.5%	18.6%	19.4%	17.8%	18.4%	18.6%	18.6%		
Murder	322	318	328	329	336	331	312	312	312	329	5.4%	2.2%
Firearm Related	171	177	183	156	168	185	175	179	181	200	10.5%	17.0%
Percent Firearm	53.1%	55.7%	55.8%	47.4%	50.0%	55.9%	56.1%	57.4%	58.0%	60.8%		
Forcible Rape	1,915	2,085	2,161	2,133	2,203	2,094	2,050	1,896	1,740	1,725	-0.9%	-9.9%
Firearm Related	65	45	47	55	52	35	31	36	24	15	-37.5%	-76.9%
Percent Firearm	3.4%	2.2%	2.2%	2.6%	2.4%	1.7%	1.5%	1.9%	1.4%	0.9%		
Robbery	9,511	9,717	9,789	8,977	10,281	10,868	9,248	9,550	9,471	8,782	-7.3%	-7.7%
Firearm Related	2,819	2,873	3,036	2,607	3,252	3,413	2,687	2,828	2,812	2,543	-9.6%	-9.8%
Percent Firearm	29.6%	29.6%	31.0%	29.0%	31.6%	31.4%	29.1%	29.6%	29.7%	29.0%		
Aggravated Assault	18,223	18,637	17,639	17,147	18,080	18,433	17,754	17,229	16,944	16,459	-2.9%	-9.7%
Firearm Related	1,839	2,013	2,117	1,908	2,287	2,530	2,343	2,286	2,283	2,330	2.1%	26.7%
Percent Firearm	10.1%	10.8%	12.0%	11.1%	12.6%	13.7%	13.2%	13.3%	13.5%	14.2%		

Source: DCJS, Uniform Crime/Incident-Based Reporting systems.
Includes all reports received as of 9/12/2011.