



New York State Crime Report

Andrew M. Cuomo
Governor

Michael C. Green
Executive Deputy Commissioner

May 2015

Crime in New York State 2014 Preliminary Data

This report provides preliminary information on the number of Index crimes and rates per 100,000 population for New York State, its two regions and each of its 62 counties in 2014.

The FBI annually provides the state Division of Criminal Justice Services (DCJS) with county population data based on U.S. Census estimates and the agency use those data to calculate crime rates.

Crime counts are based on official crime reports submitted by law enforcement agencies to DCJS through the Uniform Crime Reporting (UCR) and Incident Based Reporting (IBR) programs.

The FBI and New York State use seven Index crime categories as indicators of overall crime trends: violent crimes of murder, rape*, robbery, and aggravated assault; and property crimes of burglary, larceny and motor vehicle theft.

This report details Index crimes reported in New York State and its two regions — New York City and non-New York City — annually for the last 10 years. It also compares Index crimes by county for 2014 vs. 2013.

Index crimes for each reporting agency from 2010 through 2014 are available on the DCJS website: www.criminaljustice.ny.gov/crimnet/ojsa/stats.htm

* See Page 11 for more information.

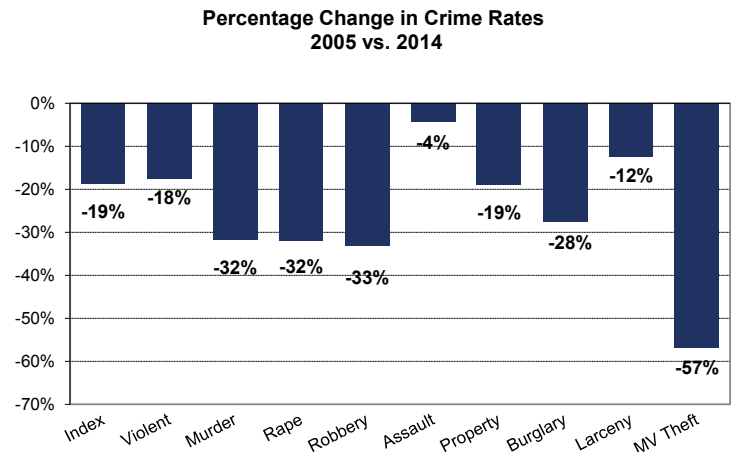
Crime in New York State reached an all-time low in 2014, with 408,275 Index crimes reported.

The state also experienced significant declines in crime rate (the number of Index crimes per capita) and crime volume (the total number of Index crimes reported) over the past decade.

Change in Crime Rates: 2005 vs. 2014

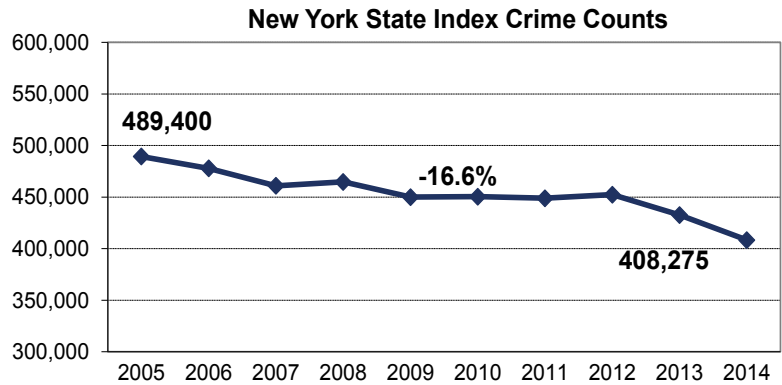
Over the past 10 years, the overall rate of Index crimes per 100,000 residents declined 19 percent. The rate of violent crimes fell 18 percent and property crimes were down 19 percent.

From 2005 to 2014, the largest reductions in crime rates were reported for motor vehicle theft, murder, robbery and rape (See Appendix 1, which details a statewide, annualized comparison of crime rates).

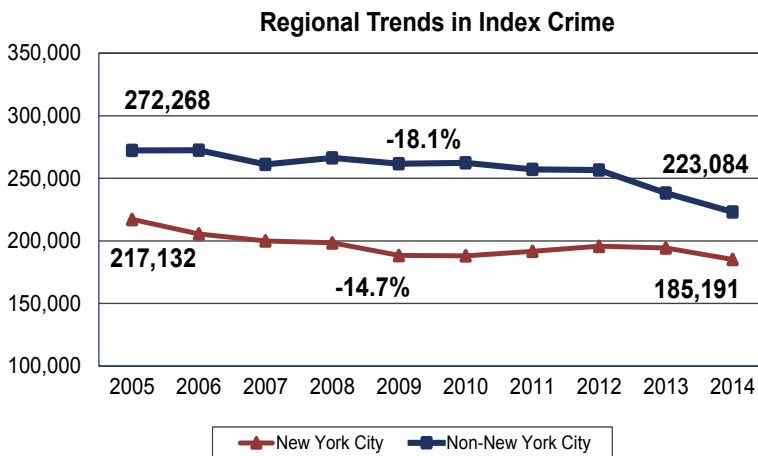


Change in Crime Volume: 2005 vs. 2014

New York State's crime rate has decreased over the past 10 years, the result of significant reductions in reported crime coupled with an increase in the state's population. In 2014, there were 81,125 fewer crimes reported than in 2005. Reported crime has not been lower since the state started tracking annual data in 1975. Meanwhile, the state's population increased by approximately 490,000 residents during the same 10-year period.



Trends in Regional Crime: 2005 to 2014



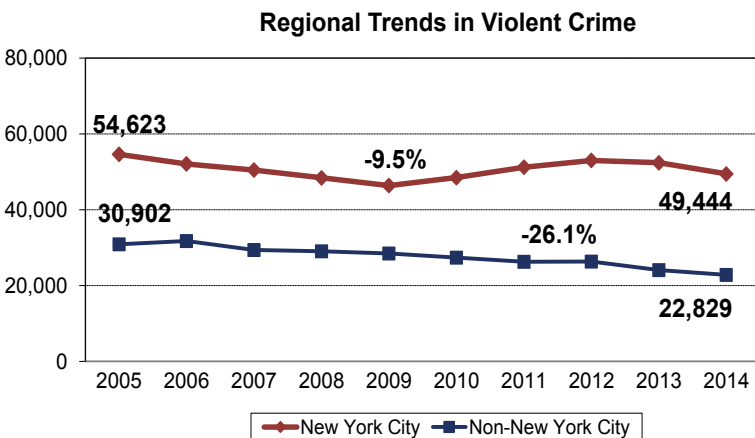
The state's two regions — New York City (five counties) and non-New York City (57 counties) — experienced similar declines in Index crime over the last 10 years.

The number of Index crimes reported in New York City fell 14.7 percent between 2005 and 2014, while the rate of decline was 18.1 percent in the rest of the state. The counties outside of New York City accounted for 55 percent of the reported crime statewide, and almost 60 percent of the property crime that was reported in 2014.

The decline in violent crime over the last 10 years was nearly three times greater outside New York City (-26.1%) than in New York City (-9.5%).

Collectively, the 57 counties outside New York City have reported a steady decline in violent crime since 2006. New York City's five counties reported increases in violent crime between 2009 and 2012 but reported a slight decline in 2013 and 2014.

New York City accounts for 68.4 percent of the violent crime reported in New York State (See Appendix 2).



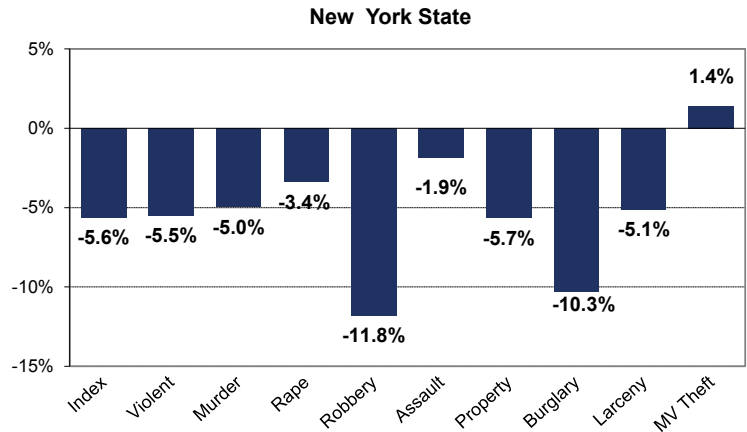
Statewide Crime Trends: 2013 vs. 2014

Preliminary 2014 crime data show that crime volume in New York State declined 5.6 percent between 2013 and 2014.

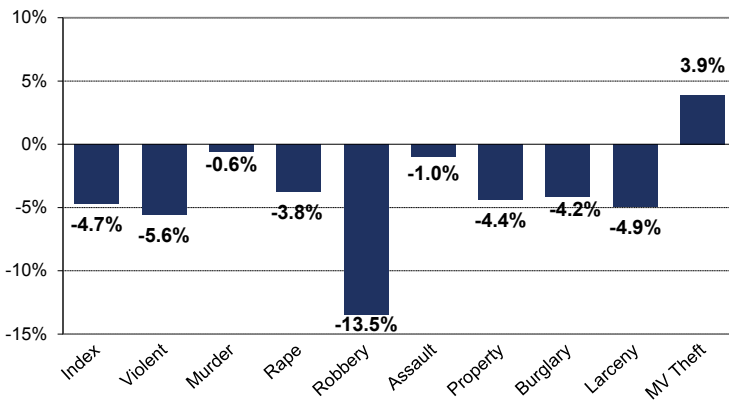
New York State reported a decline in all Index crime categories except motor vehicle theft as compared to 2013. Motor vehicle theft increased by 1.4 percent in 2014.

Violent crime declined 5.5 percent while property crime declined 5.7 percent. The largest declines were reported in robbery (-11.8%) and burglary (-10.3%).

Percentage Change in Crime Volume
2013 vs. 2014



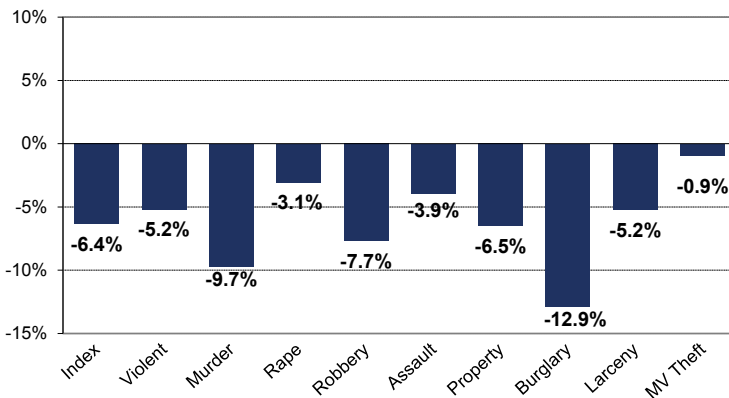
New York City



The total number of Index crimes in New York City decreased by 4.7 percent between 2013 and 2014. There was an increase in motor vehicle theft (+3.9%) during the period.

In the violent crime category, robberies dropped significantly (-13.5%), while rape decreased by 3.8 percent. There were also declines in two property crime categories: larceny (-4.9%), and burglary (-4.2%).

Non-New York City



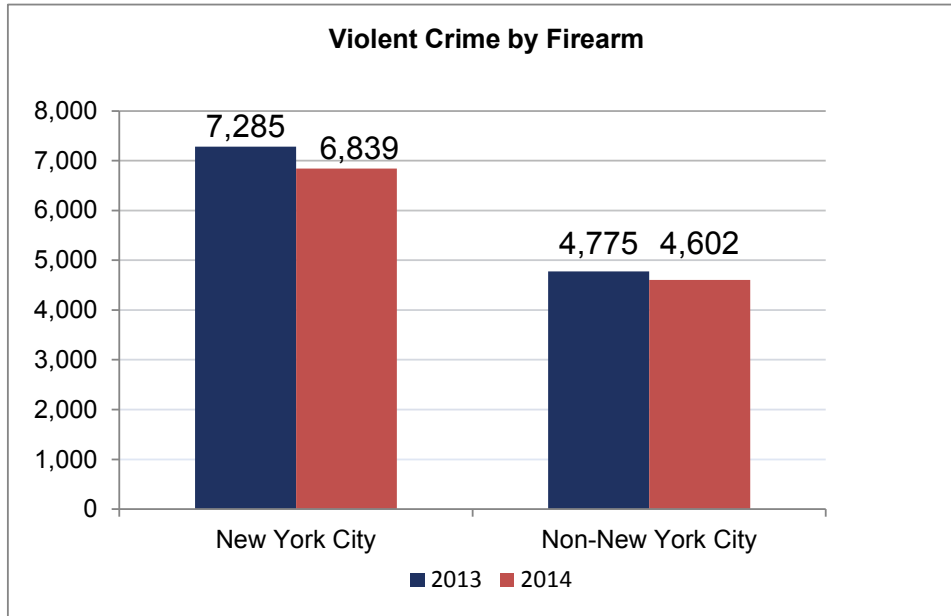
Reported crime outside of New York City decreased by 6.4% between 2013 and 2014.

Decreases were reported in all crime categories. In the violent crime category, murder (-9.7%) and robbery (-7.7%) declined significantly. In the property crime category, the largest decline was reported for burglary (-12.9%).

Crime counts for 2013 and 2014 are presented for each county in Appendix 3; county crime rates for 2014 are detailed in Appendix 4.

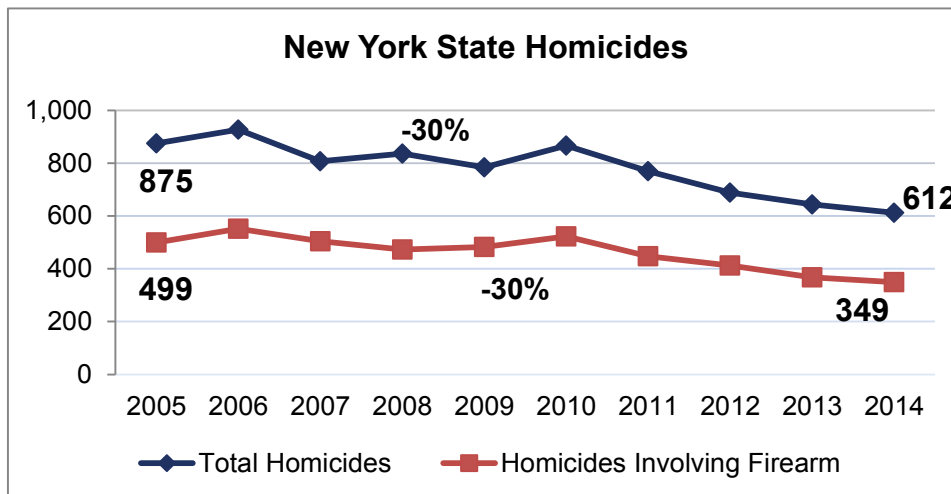
Trends in Violent Crimes by Firearm

The Division of Criminal Justice Services collects data from law enforcement regarding the number of reported violent crimes that involved the use of a firearm. Between 2013 and 2014, violent crime involving firearms decreased in New York City by 6 percent, with 446 fewer crimes reported. During the same time period, violent crimes by firearm outside New York City decreased by 4 percent, with 173 fewer crimes reported (See Appendix 5).



Regional Trends in Homicide

Mirroring the trend in overall index crime, the number of homicides reported statewide in 2014 reached the lowest point since crime reporting began in 1975. Homicides decreased by 30 percent (875 vs. 612) when comparing 2005 to 2014 and have steadily declined since 2010 (-29%). Homicides by firearm show a similar trend, with a decrease of 30 percent over the past 10 years and a decrease of 33% between 2010 and 2014. This is driven primarily by a decline in the number of homicides reported by New York City (See Appendix 6).



Appendix 1
New York State Index Crime Counts and Rates per 100,000 Population: 2005 - 2014

Counts	2005	2006	2007	2008	2009	2010	2011	2012	2013	2014	% change	
											2013-14	2005-14
Index Crime	489,400	477,867	460,992	464,690	449,973	450,430	448,845	452,316	432,592	408,275	-5.6%	-16.6%
Violent Crime	85,525	83,816	79,817	77,441	74,832	75,835	77,459	79,306	76,466	72,273	-5.5%	-15.5%
Murder	875	927	807	836	784	866	770	688	644	612	-5.0%	-30.1%
Rape	3,615	3,165	2,924	2,787	2,566	2,766	2,772	2,833	2,609	2,521	-3.4%	-30.3%
Robbery	35,004	34,381	31,036	31,743	28,064	28,404	28,349	28,554	27,175	23,972	-11.8%	-31.5%
Agg. Assault	46,031	45,343	45,050	42,075	43,418	43,799	45,568	47,231	46,038	45,168	-1.9%	-1.9%
Property Crime	403,875	394,051	381,175	387,249	375,141	374,595	371,386	373,010	356,126	336,002	-5.7%	-16.8%
Burglary	67,802	68,487	64,833	65,514	62,678	64,694	65,066	64,076	56,171	50,388	-10.3%	-25.7%
Larceny	300,538	293,476	288,369	296,640	290,681	289,493	287,660	291,743	284,490	269,934	-5.1%	-10.2%
MV Theft	35,535	32,088	27,973	25,095	21,782	20,408	18,660	17,191	15,465	15,680	1.4%	-55.9%
Rates per 100,000 Pop.	2,541.7	2,475.7	2,389.4	2,384.7	2,303.1	2,324.9	2,306.4	2,311.8	2,201.9	2,068.1	-6.1%	-18.6%
Violent Crime	444.2	434.2	413.7	397.4	383.0	391.4	398.0	405.3	389.2	366.1	-5.9%	-17.6%
Murder	4.5	4.8	4.2	4.3	4.0	4.5	4.0	3.5	3.3	3.1	-5.4%	-31.8%
Rape	18.8	16.4	15.2	14.3	13.1	14.3	14.2	14.5	13.3	12.8	-3.8%	-32.0%
Robbery	181.8	178.1	160.9	162.9	143.6	146.6	145.7	145.9	138.3	121.4	-12.2%	-33.2%
Agg. Assault	239.1	234.9	233.5	215.9	222.2	226.1	234.2	241.4	234.3	228.8	-2.4%	-4.3%
Property Crime	2,097.5	2,041.5	1,975.7	1,987.3	1,920.1	1,933.5	1,908.4	1,906.4	1,812.7	1,702.0	-6.1%	-18.9%
Burglary	352.1	354.8	336.0	336.2	320.8	333.9	334.3	327.5	285.9	255.2	-10.7%	-27.5%
Larceny	1,560.9	1,520.4	1,494.6	1,522.3	1,487.8	1,494.2	1,478.2	1,491.1	1,448.0	1,367.3	-5.6%	-12.4%
MV Theft	184.6	166.2	145.0	128.8	111.5	105.3	95.9	87.9	78.7	79.4	0.9%	-57.0%

Source: DCJS, Uniform Crime/Incident-Based Reporting system.
Includes all reports received as of 4/22/2015.

Appendix 2
New York State Index Crime Summary by Region: 2005 - 2014

NEW YORK CITY	2005	2006	2007	2008	2009	2010	2011	2012	2013	2014	% change	
											2013-14	2005-14
Index Crime	217,132	205,522	199,941	198,419	188,357	188,104	191,666	195,753	194,355	185,191	-4.7%	-14.7%
Violent Crime	54,623	52,086	50,453	48,430	46,357	48,489	51,209	52,993	52,384	49,444	-5.6%	-9.5%
Murder	539	596	496	523	471	536	515	419	335	333	-0.6%	-38.2%
Rape	1,412	1,071	875	890	832	1,036	1,092	1,162	1,112	1,070	-3.8%	-24.2%
Robbery	24,722	23,511	21,787	22,186	18,597	19,608	19,773	20,201	19,170	16,581	-13.5%	-32.9%
Agg. Assault	27,950	26,908	27,295	24,831	26,457	27,309	29,829	31,211	31,767	31,460	-1.0%	12.6%
Property Crime	162,509	153,436	149,488	149,989	142,000	139,615	140,457	142,760	141,971	135,747	-4.4%	-16.5%
Burglary	23,210	22,137	20,914	19,867	18,780	17,926	18,159	18,635	16,606	15,916	-4.2%	-31.4%
Larceny	120,918	115,363	115,318	117,682	112,526	111,370	112,864	115,935	117,931	112,107	-4.9%	-7.3%
MV Theft	18,381	15,936	13,256	12,440	10,694	10,319	9,434	8,190	7,434	7,724	3.9%	-58.0%
NON-NEW YORK CITY	272,268	272,345	261,051	266,271	261,616	262,326	257,179	256,563	238,237	223,084	-6.4%	-18.1%
Violent Crime	30,902	31,730	29,364	29,011	28,475	27,346	26,250	26,313	24,082	22,829	-5.2%	-26.1%
Murder	336	331	311	313	313	330	255	269	309	279	-9.7%	-17.0%
Rape	2,203	2,094	2,049	1,897	1,734	1,730	1,680	1,671	1,497	1,451	-3.1%	-34.1%
Robbery	10,282	10,870	9,249	9,557	9,467	8,796	8,576	8,353	8,005	7,391	-7.7%	-28.1%
Agg. Assault	18,081	18,435	17,755	17,244	16,961	16,490	15,739	16,020	14,271	13,708	-3.9%	-24.2%
Property Crime	241,366	240,615	231,687	237,260	233,141	234,980	230,929	230,250	214,155	200,255	-6.5%	-17.0%
Burglary	44,592	46,350	43,919	45,647	43,898	46,768	46,907	45,441	39,565	34,472	-12.9%	-22.7%
Larceny	179,620	178,113	173,051	178,958	178,155	178,123	174,796	175,808	166,559	157,827	-5.2%	-12.1%
MV Theft	17,154	16,152	14,717	12,655	11,088	10,089	9,226	9,001	8,031	7,956	-0.9%	-53.6%

Source: DCJS, Uniform Crime/Incident-Based Reporting system.
Includes all reports received as of 4/22/2015.

Appendix 3
New York State Index Crime Summary by County
 2013 vs. 2014

County	Year	Total	Violent	Murder	Rape	Robbery	Agg. Assault	Property	Burglary	Larceny	MV Theft
Albany	2013	9,460	1,003	9	47	292	655	8,457	1,205	7,001	251
	2014	9,019	993	10	45	310	628	8,026	1,132	6,662	232
	% change	-4.7%	-1.0%	11.1%	-4.3%	6.2%	-4.1%	-5.1%	-6.1%	-4.8%	-7.6%
Allegany	2013	795	54	0	9	4	41	741	194	533	14
	2014	614	68	2	9	3	54	546	135	396	15
	% change	-22.8%	25.9%	NA	0.0%	-25.0%	31.7%	-26.3%	-30.4%	-25.7%	7.1%
Bronx	2013	36,280	13,020	83	189	4,456	8,292	23,260	2,795	19,016	1,449
	2014	36,030	12,713	95	242	4,004	8,372	23,317	2,739	19,104	1,474
	% change	-0.7%	-2.4%	14.5%	28.0%	-10.1%	1.0%	0.2%	-2.0%	0.5%	1.7%
Broome	2013	6,704	510	7	51	153	299	6,194	1,162	4,903	129
	2014	6,302	494	4	45	129	316	5,808	872	4,801	135
	% change	-6.0%	-3.1%	-42.9%	-11.8%	-15.7%	5.7%	-6.2%	-25.0%	-2.1%	4.7%
Cattaraugus	2013	1,762	115	0	13	11	91	1,647	309	1,276	62
	2014	1,429	133	3	17	8	105	1,296	257	990	49
	% change	-18.9%	15.7%	NA	30.8%	-27.3%	15.4%	-21.3%	-16.8%	-22.4%	-21.0%
Cayuga	2013	1,516	128	2	26	23	77	1,388	269	1,108	11
	2014	1,559	138	0	23	15	100	1,421	232	1,156	33
	% change	2.8%	7.8%	-100.0%	-11.5%	-34.8%	29.9%	2.4%	-13.8%	4.3%	200.0%
Chautauqua	2013	3,637	274	2	30	65	177	3,363	776	2,540	47
	2014	3,528	296	3	32	66	195	3,232	739	2,393	100
	% change	-3.0%	7.7%	50.0%	6.7%	1.5%	10.2%	-3.9%	-4.8%	-5.8%	112.8%
Chemung	2013	2,201	151	0	7	37	107	2,050	351	1,672	27
	2014	2,124	151	1	11	33	106	1,973	343	1,586	44
	% change	-3.5%	0.0%	NA	57.1%	-10.8%	-0.9%	-3.8%	-2.3%	-5.1%	63.0%
Chenango	2013	927	48	2	13	4	29	879	164	703	12
	2014	908	50	3	8	5	34	858	177	670	11
	% change	-2.0%	4.2%	50.0%	-38.5%	25.0%	17.2%	-2.4%	7.9%	-4.7%	-8.3%
Clinton	2013	1,665	111	3	21	9	78	1,554	261	1,254	39
	2014	1,303	68	4	19	5	40	1,235	197	1,016	22
	% change	-21.7%	-38.7%	33.3%	-9.5%	-44.4%	-48.7%	-20.5%	-24.5%	-19.0%	-43.6%
Columbia	2013	1,125	76	0	8	17	51	1,049	207	828	14
	2014	923	47	0	5	8	34	876	155	701	20
	% change	-18.0%	-38.2%	NA	-37.5%	-52.9%	-33.3%	-16.5%	-25.1%	-15.3%	42.9%
Cortland	2013	1,064	51	0	12	9	30	1,013	210	791	12
	2014	702	39	2	13	4	20	663	132	509	22
	% change	-34.0%	-23.5%	NA	8.3%	-55.6%	-33.3%	-34.6%	-37.1%	-35.7%	83.3%

Appendix 3
New York State Index Crime Summary by County
 2013 vs. 2014

County	Year	Total	Violent	Murder	Rape	Robbery	Agg. Assault	Property	Burglary	Larceny	MV Theft
Delaware	2013	805	56	2	7	5	42	749	172	560	17
	2014	766	58	0	7	4	47	708	180	510	18
	% change	-4.8%	3.6%	-100.0%	0.0%	-20.0%	11.9%	-5.5%	4.7%	-8.9%	5.9%
Dutchess	2013	5,068	582	12	28	149	393	4,486	767	3,620	99
	2014	4,722	558	3	26	172	357	4,164	607	3,485	72
	% change	-6.8%	-4.3%	-75.0%	-7.1%	15.4%	-9.2%	-7.2%	-20.9%	-3.7%	-27.3%
Erie	2013	29,305	4,087	55	204	1,503	2,325	25,218	5,222	18,740	1,256
	2014	28,348	3,925	66	173	1,497	2,189	24,423	4,629	18,492	1,302
	% change	-3.3%	-4.0%	20.0%	-15.2%	-0.4%	-5.8%	-3.2%	-11.4%	-1.3%	3.7%
Essex	2013	450	43	0	8	2	33	407	121	267	19
	2014	341	44	0	10	1	33	297	90	193	14
	% change	-24.2%	2.3%	NA	25.0%	-50.0%	0.0%	-27.0%	-25.6%	-27.7%	-26.3%
Franklin	2013	874	61	1	10	3	47	813	179	606	28
	2014	849	53	0	6	5	42	796	148	626	22
	% change	-2.9%	-11.5%	-100.0%	-40.0%	66.7%	-10.6%	-2.1%	-17.3%	3.3%	-21.4%
Fulton	2013	1,527	62	1	13	11	37	1,465	262	1,164	39
	2014	1,466	63	0	4	19	40	1,403	265	1,108	30
	% change	-4.0%	1.6%	-100.0%	-69.2%	72.7%	8.1%	-4.2%	1.1%	-4.8%	-23.1%
Genesee	2013	1,467	109	0	22	22	65	1,358	294	1,044	20
	2014	1,508	111	1	20	19	71	1,397	249	1,121	27
	% change	2.8%	0.9%	NA	-9.1%	-13.6%	9.2%	2.9%	-15.3%	7.4%	35.0%
Greene	2013	717	58	1	8	6	43	659	213	420	26
	2014	597	69	2	10	1	56	528	144	368	16
	% change	-16.7%	15.5%	100.0%	25.0%	-83.3%	30.2%	-19.9%	-32.4%	-12.4%	-38.5%
Hamilton	2013	62	4	0	0	0	4	58	21	37	0
	2014	62	1	0	0	0	1	61	25	34	2
	% change	0.0%	-75.0%	NA	NA	NA	-75.0%	5.2%	19.0%	-8.1%	NA
Herkimer	2013	1,192	126	4	15	7	100	1,066	246	804	16
	2014	1,123	110	0	11	10	89	1,013	187	808	18
	% change	-5.8%	-13.5%	-100.0%	-26.7%	42.9%	-11.0%	-5.0%	-24.0%	0.5%	12.5%
Jefferson	2013	2,401	140	1	16	16	107	2,261	339	1,842	80
	2014	2,524	172	1	26	21	124	2,352	341	1,972	39
	% change	5.1%	22.9%	0.0%	62.5%	31.3%	15.9%	4.0%	0.6%	7.1%	-51.3%
Kings	2013	59,056	18,258	147	401	6,854	10,856	40,798	5,635	32,557	2,606
	2014	56,700	17,053	122	347	5,980	10,604	39,647	5,719	31,273	2,655
	% change	-4.0%	-2.2%	-17.0%	-13.5%	-12.8%	-2.3%	-2.8%	1.5%	-3.9%	1.9%

Appendix 3
New York State Index Crime Summary by County
 2013 vs. 2014

County	Year	Total	Violent	Murder	Rape	Robbery	Agg. Assault	Property	Burglary	Larceny	MV Theft
Lewis	2013	332	24	1	1	0	22	308	95	199	14
	2014	256	27	0	2	0	25	229	82	137	10
	% change	-22.9%	12.5%	-100.0%	100.0%	NA	13.6%	-25.6%	-13.7%	-31.2%	-28.6%
Livingston	2013	1,088	56	0	16	9	31	1,032	185	814	33
	2014	894	47	1	5	6	35	847	153	677	17
	% change	-17.8%	-16.1%	NA	-68.8%	-33.3%	12.9%	-17.9%	-17.3%	-16.8%	-48.5%
Madison	2013	1,155	55	1	9	7	38	1,100	210	867	23
	2014	1,129	60	1	9	6	44	1,069	208	845	16
	% change	-2.3%	7.3%	0.0%	0.0%	-14.3%	15.8%	-2.8%	-1.0%	-2.5%	-30.4%
Monroe	2013	23,077	2,686	48	144	1,133	1,361	20,391	4,267	15,237	887
	2014	21,317	2,224	35	162	866	1,161	19,093	3,457	14,662	974
	% change	-7.6%	-17.3%	-27.1%	12.5%	-23.6%	-14.7%	-6.4%	-19.0%	-3.8%	9.8%
Montgomery	2013	1,126	48	0	4	13	31	1,078	187	864	27
	2014	1,248	48	0	7	17	24	1,200	184	992	24
	% change	10.8%	0.0%	NA	75.0%	30.8%	-22.6%	11.3%	-1.6%	14.8%	-11.1%
Nassau	2013	18,684	2,111	25	54	1,043	989	16,573	2,355	13,328	890
	2014	17,606	2,040	18	60	935	1,027	15,566	1,927	12,774	865
	% change	-5.8%	-3.4%	-28.0%	11.1%	-10.4%	3.8%	-6.1%	-18.2%	-4.2%	-2.8%
New York	2013	51,872	8,708	39	236	3,340	5,093	43,164	2,775	39,647	742
	2014	47,566	8,327	37	243	2,909	5,138	39,239	2,678	35,791	770
	% change	-8.3%	-4.4%	-5.1%	3.0%	-12.9%	0.9%	-9.1%	-3.5%	-9.7%	3.8%
Niagara	2013	6,650	798	4	37	240	517	5,852	1,312	4,319	221
	2014	6,219	797	6	33	235	523	5,422	1,229	3,940	253
	% change	-6.5%	-0.3%	50.0%	-10.8%	-2.1%	1.2%	-7.3%	-6.3%	-8.8%	14.5%
Oneida	2013	5,987	537	13	45	136	343	5,450	1,054	4,227	169
	2014	5,747	559	9	41	151	358	5,188	1,039	3,977	172
	% change	-4.0%	4.1%	-30.8%	-8.9%	11.0%	4.4%	-4.8%	-1.4%	-5.9%	1.8%
Onondaga	2013	13,987	1,491	25	104	469	893	12,496	2,642	9,312	542
	2014	12,957	1,493	20	82	497	894	11,464	2,249	8,715	500
	% change	-7.4%	0.1%	-20.0%	-21.2%	6.0%	0.1%	-8.3%	-14.9%	-6.4%	-7.7%
Ontario	2013	2,095	122	1	20	31	70	1,973	388	1,548	37
	2014	2,182	130	0	31	14	85	2,052	360	1,663	29
	% change	4.2%	4.9%	-100.0%	55.0%	-54.8%	21.4%	4.0%	-7.2%	7.4%	-21.6%
Orange	2013	8,592	868	12	74	277	505	7,724	1,196	6,311	217
	2014	7,781	830	7	59	239	525	6,951	961	5,801	189
	% change	-9.4%	-4.4%	-41.7%	-20.3%	-13.7%	4.0%	-10.0%	-19.6%	-8.1%	-12.9%

Appendix 3
New York State Index Crime Summary by County
 2013 vs. 2014

County	Year	Total	Violent	Murder	Rape	Robbery	Agg. Assault	Property	Burglary	Larceny	MV Theft
Orleans	2013	747	59	1	6	8	44	688	197	466	25
	2014	683	58	0	5	7	46	625	162	442	21
	% change	-8.6%	-1.7%	-100.0%	-16.7%	-12.5%	4.5%	-9.2%	-17.8%	-5.2%	-16.0%
Oswego	2013	2,674	157	2	15	29	111	2,517	520	1,917	80
	2014	2,549	159	2	33	23	101	2,390	570	1,761	59
	% change	-4.7%	1.3%	0.0%	120.0%	-20.7%	-9.0%	-5.0%	9.6%	-8.1%	-26.3%
Otsego	2013	835	65	1	11	15	38	770	177	579	14
	2014	835	51	0	2	8	41	784	129	641	14
	% change	0.0%	-21.5%	-100.0%	-81.8%	-46.7%	7.9%	1.8%	-27.1%	10.7%	0.0%
Putnam	2013	772	49	0	12	8	29	723	131	565	27
	2014	780	51	0	3	8	40	729	161	553	15
	% change	1.0%	4.1%	NA	-75.0%	0.0%	37.9%	0.8%	22.9%	-2.1%	-44.4%
Queens	2013	39,913	10,740	59	254	3,994	6,433	29,173	4,732	22,030	2,411
	2014	38,030	9,800	64	207	3,271	6,258	28,230	4,191	21,434	2,605
	% change	-4.7%	-8.8%	8.5%	-18.5%	-18.1%	-2.7%	-3.2%	-11.4%	-2.7%	8.0%
Rensselaer	2013	4,135	469	3	22	159	285	3,666	917	2,615	134
	2014	4,196	471	9	25	133	304	3,725	809	2,717	199
	% change	1.5%	0.2%	200.0%	13.6%	-16.4%	6.7%	1.6%	-11.8%	3.9%	48.5%
Richmond	2013	7,234	1,658	7	32	526	1,093	5,576	669	4,681	226
	2014	6,865	1,551	15	31	417	1,088	5,314	589	4,505	220
	% change	-5.1%	-6.5%	114.3%	-3.1%	-20.7%	-0.5%	-4.7%	-12.0%	-3.8%	-2.7%
Rockland	2013	3,805	395	4	28	94	269	3,410	408	2,910	92
	2014	3,710	370	3	19	112	236	3,340	375	2,883	82
	% change	-2.5%	-6.6%	-25.0%	-32.1%	19.1%	-12.3%	-2.1%	-8.1%	-0.9%	-10.9%
St Lawrence	2013	1,965	112	1	10	12	89	1,853	345	1,470	38
	2014	1,672	92	3	19	11	59	1,580	277	1,272	31
	% change	-14.9%	-17.9%	200.0%	90.0%	-8.3%	-33.7%	-14.7%	-19.7%	-13.5%	-18.4%
Saratoga	2013	3,115	173	1	21	35	116	2,942	494	2,385	63
	2014	2,959	162	1	23	29	109	2,797	446	2,281	70
	% change	-5.0%	-6.4%	0.0%	9.5%	-17.1%	-6.0%	-4.9%	-9.7%	-4.4%	11.1%
Schenectady	2013	5,381	676	11	36	228	401	4,705	1,008	3,501	196
	2014	5,104	597	6	39	170	382	4,507	884	3,455	168
	% change	-5.1%	-11.1%	-45.5%	8.3%	-25.4%	-4.7%	-4.2%	-12.3%	-1.3%	-14.3%
Schoharie	2013	536	27	0	8	5	14	509	117	383	9
	2014	380	11	0	1	1	9	369	72	285	12
	% change	-29.1%	-55.6%	NA	-87.5%	-80.0%	-35.7%	-27.5%	-38.5%	-25.6%	33.3%

Appendix 3
New York State Index Crime Summary by County
2013 vs. 2014

County	Year	Total	Violent	Murder	Rape	Robbery	Agg. Assault	Property	Burglary	Larceny	MV Theft
Schuyler	2013	165	14	0	0	1	13	151	33	111	7
	2014	164	10	0	0	0	10	154	20	130	4
	% change	-0.6%	-28.6%	NA	NA	-100.0%	-23.1%	2.0%	-39.4%	17.1%	-42.9%
Seneca	2013	794	62	2	8	5	47	732	123	599	10
	2014	719	57	1	5	2	49	662	92	553	17
	% change	-9.4%	-8.1%	-50.0%	-37.5%	-60.0%	4.3%	-9.6%	-25.2%	-7.7%	70.0%
Steuben	2013	1,529	123	1	21	13	88	1,406	265	1,117	24
	2014	1,476	111	0	24	9	78	1,365	239	1,084	42
	% change	-3.5%	-9.8%	-100.0%	14.3%	-30.8%	-11.4%	-2.9%	-9.8%	-3.0%	75.0%
Suffolk	2013	26,373	1,930	27	53	691	1,159	24,443	3,610	19,655	1,178
	2014	25,628	1,741	29	48	628	1,036	23,887	3,291	19,366	1,230
	% change	-2.8%	-9.8%	7.4%	-9.4%	-9.1%	-10.6%	-2.3%	-8.8%	-1.5%	4.4%
Sullivan	2013	1,719	172	1	18	22	131	1,547	484	1,023	40
	2014	1,634	155	3	14	26	112	1,479	470	969	40
	% change	-4.9%	-9.9%	200.0%	-22.2%	18.2%	-14.5%	-4.4%	-2.9%	-5.3%	0.0%
Tioga	2013	649	27	1	4	5	17	622	166	431	25
	2014	466	27	0	5	2	20	439	112	314	13
	% change	-28.2%	0.0%	-100.0%	25.0%	-60.0%	17.6%	-29.4%	-32.5%	-27.1%	-48.0%
Tompkins	2013	2,900	110	1	14	29	66	2,790	459	2,293	38
	2014	2,541	96	1	14	32	49	2,445	475	1,934	36
	% change	-12.4%	-12.7%	0.0%	0.0%	10.3%	-25.8%	-12.4%	3.5%	-15.7%	-5.3%
Ulster	2013	3,579	294	3	31	52	208	3,285	592	2,638	55
	2014	3,261	293	5	50	49	189	2,968	557	2,367	44
	% change	-8.9%	-0.3%	66.7%	61.3%	-5.8%	-9.1%	-9.6%	-5.9%	-10.3%	-20.0%
Warren	2013	1,292	53	1	10	7	35	1,239	158	1,073	8
	2014	1,207	40	0	9	6	25	1,167	156	997	14
	% change	-6.6%	-24.5%	-100.0%	-10.0%	-14.3%	-28.6%	-5.8%	-1.3%	-7.1%	75.0%
Washington	2013	881	71	1	5	6	59	810	187	600	23
	2014	683	60	0	9	3	48	623	118	486	19
	% change	-22.5%	-15.5%	-100.0%	80.0%	-50.0%	-18.6%	-23.1%	-36.9%	-19.0%	-17.4%
Wayne	2013	1,843	153	4	21	29	99	1,690	468	1,184	38
	2014	1,593	112	0	23	24	65	1,481	350	1,086	45
	% change	-13.6%	-26.8%	-100.0%	9.5%	-17.2%	-34.3%	-12.4%	-25.2%	-8.3%	18.4%
Westchester	2013	14,128	2,191	11	58	843	1,279	11,937	1,677	9,642	618
	2014	12,104	2,156	14	65	805	1,272	9,948	1,489	7,987	472
	% change	-14.3%	-1.6%	27.3%	12.1%	-4.5%	-0.5%	-16.7%	-11.2%	-17.2%	-23.6%

Appendix 3
New York State Index Crime Summary by County
 2013 vs. 2014

County	Year	Total	Violent	Murder	Rape	Robbery	Agg. Assault	Property	Burglary	Larceny	MV Theft
Wyoming	2013	510	41	0	3	2	36	469	82	379	8
	2014	379	36	0	1	0	35	343	59	274	10
	% change	-25.7%	-12.2%	NA	-66.7%	-100.0%	-2.8%	-26.9%	-28.0%	-27.7%	25.0%
Yates	2013	413	14	0	6	1	7	399	112	284	3
	2014	308	17	0	4	2	11	291	74	210	7
	% change	-25.4%	21.4%	NA	-33.3%	100.0%	57.1%	-27.1%	-33.9%	-26.1%	133.3%

Note: NA indicates that the percentage change is not applicable because the count in 2013 was zero.

Source: DCJS, Uniform Crime/Incident-Based Reporting system.

Includes all reports received as of 4/22/2015.

* The FBI expanded the list of sex offenses categorized as the Index crime of rape, a change that took effect in 2013. Rape counts detailed on Pages 1 through 13 of this report conform to the pre-2013 definition of the crime. Appendices 7 and 8 provide additional information about the expanded definition of rape and data for 2014 relevant to that change.

Note: Data included in this report differ slightly from those published by the FBI, as that agency estimates Index crimes for agencies with incomplete reporting, and excludes data submitted after FBI deadlines.

Appendix 4
New York State Index Crime Summary by County: 2014
Rates per 100,000 Population

County	Crime Rate			County	Crime Rate		
	Index	Violent	Property		Index	Violent	Property
Albany	2,926.7	322.2	2,604.4	Onondaga	2,760.6	318.1	2,442.5
Allegany	1,279.9	141.7	1,138.2	Ontario	1,992.1	118.7	1,873.4
Bronx	2,501.1	882.5	1,618.6	Orange	2,065.5	220.3	1,845.2
Broome	3,196.9	250.6	2,946.3	Orleans	1,620.4	137.6	1,482.8
Cattaraugus	1,860.0	173.1	1,686.9	Oswego	2,104.7	131.3	1,973.4
Cayuga	1,960.7	173.6	1,787.2	Otsego	1,354.6	82.7	1,271.8
Chautauqua	2,655.6	222.8	2,432.8	Putnam	781.7	51.1	730.6
Chemung	2,399.1	170.6	2,228.5	Queens	1,643.9	423.6	1,220.3
Chenango	1,839.0	101.3	1,737.7	Rensselaer	2,617.5	293.8	2,323.7
Clinton	1,596.7	83.3	1,513.4	Richmond	1,446.7	326.8	1,119.8
Columbia	1,485.2	75.6	1,409.5	Rockland	1,146.7	114.4	1,032.3
Cortland	1,433.2	79.6	1,353.5	St Lawrence	1,490.4	82.0	1,408.4
Delaware	1,675.8	126.9	1,548.9	Saratoga	1,313.9	71.9	1,242.0
Dutchess	1,589.0	187.8	1,401.2	Schenectady	3,278.6	383.5	2,895.1
Erie	3,076.1	425.9	2,650.2	Schoharie	1,199.1	34.7	1,164.4
Essex	916.1	118.2	797.9	Schuyler	885.1	54.0	831.1
Franklin	1,639.1	102.3	1,536.8	Seneca	2,025.2	160.5	1,864.6
Fulton	2,698.4	116.0	2,582.4	Steuben	1,495.0	112.4	1,382.6
Genesee	2,544.1	187.3	2,356.9	Suffolk	1,704.7	115.8	1,588.9
Greene	1,234.4	142.7	1,091.7	Sullivan	2,133.4	202.4	1,931.0
Hamilton	1,300.9	21.0	1,279.9	Tioga	929.7	53.9	875.8
Herkimer	1,748.7	171.3	1,577.4	Tompkins	2,436.9	92.1	2,344.9
Jefferson	2,095.7	142.8	1,952.9	Ulster	1,802.3	161.9	1,640.3
Kings	2,172.4	653.4	1,519.1	Warren	1,846.9	61.2	1,785.7
Lewis	940.8	99.2	841.6	Washington	1,081.8	95.0	986.8
Livingston	1,383.1	72.7	1,310.4	Wayne	1,725.9	121.3	1,604.5
Madison	1,562.8	83.1	1,479.7	Westchester	1,241.5	221.1	1,020.4
Monroe	2,834.7	295.7	2,538.9	Wyoming	914.3	86.8	827.4
Montgomery	2,502.3	96.2	2,406.1	Yates	1,224.8	67.6	1,157.2
Nassau	1,297.4	150.3	1,147.1				
New York	2,908.4	509.2	2,399.2	New York City	2,185.4	583.5	1,601.9
Niagara	2,905.8	372.4	2,533.4	Non-New York City	1,979.8	202.6	1,777.2
Oneida	2,459.8	239.3	2,220.6	New York State	2,068.1	366.1	1,702.0

Source: DCJS, Uniform Crime/Incident-Based Reporting system.
Includes all reports received as of 4/22/2015.

Appendix 5
Violent Crime by Firearm
2013 vs. 2014

	New York City		2013 vs. 14 % Change	Non-New York City		2013 vs. 14 % Change
	2013	2014		2013	2014	
Violent Crimes	52,384	49,444	-5.6%	24,082	22,829	-5.2%
Firearm Related	7,285	6,839	-6.1%	4,775	4,602	-3.6%
Percent Firearm	13.9%	13.8%		19.8%	20.2%	
Murder	335	333	-0.6%	309	279	-9.7%
Firearm Related	194	188	-3.1%	173	161	-6.9%
Percent Firearm	57.9%	56.5%		56.0%	57.7%	
Rape	1,112	1,070	-3.8%	1,497	1,451	-3.1%
Firearm Related	28	30	7.1%	32	27	-15.6%
Percent Firearm	2.5%	2.8%		2.1%	1.9%	
Robbery	19,170	16,581	-13.5%	8,005	7,391	-7.7%
Firearm Related	4,022	3,415	-15.1%	2,439	2,278	-6.6%
Percent Firearm	21.0%	20.6%		30.5%	30.8%	
Aggravated Assault	31,767	31,460	-1.0%	14,271	13,708	-3.9%
Firearm Related	3,218	3,372	4.8%	2,131	2,136	0.2%
Percent Firearm	10.1%	10.7%		14.9%	15.6%	

Source: DCJS, Uniform Crime/Incident-Based Reporting system.
Includes all reports received as of 4/22/2015.

Appendix 6
Homicides and Homicides by Firearm
2005 - 2014

Year	New York City		Non-New York City		New York State	
	Homicides	Firearm Related	Homicides	Firearm Related	Homicides	Firearm Related
2005	539	331	336	168	875	499
2006	596	367	331	185	927	552
2007	496	328	311	176	807	504
2008	523	294	313	179	836	473
2009	471	302	313	181	784	483
2010	536	323	330	199	866	522
2011	515	315	255	133	770	448
2012	419	241	269	171	688	412
2013	335	194	309	173	644	367
2014	333	188	279	161	612	349
2005 vs. 2014 % Change	-38.2%	-43.2%	-17.0%	-4.2%	-30.1%	-30.1%
2010 vs. 2014 % Change	-37.9%	-41.8%	-15.5%	-19.1%	-29.3%	-33.1%

Source: DCJS, Uniform Crime/Incident-Based Reporting system.
Includes all reports received as of 4/22/2015.

Appendices 7 and 8: Federal Changes in Rape Reporting

The U.S. Department of Justice has expanded the definition of rape that is used by law enforcement agencies when collecting and reporting Index crime statistics through the national Uniform Crime Reporting (UCR) program. Effective in January 2013, this change was made to more accurately reflect the scope and volume of sexual assaults nationwide and in New York State.

Prior to the expanded definition taking effect, a violent sexual assault was only classified as the Index crime rape if the victim was a female who had been vaginally penetrated by a male. The federal Justice Department established that limited definition in 1929 and it remained in effect through the end of 2012. The UCR program classified any other sexual assaults during that time frame as “Part II” sex offenses.

The new definition includes the historical elements but also encompasses female and male victims, in addition to “penetration, no matter how slight, of the vagina or anus with any body part or object, or oral penetration by a sex organ of another person, without the consent of the victim.”

The New York State Crime Reporting Program, part of the Office of Justice Research and Performance at the Division of Criminal Justice Services (DCJS), notified all law enforcement agencies of these reporting requirements (http://criminaljustice.ny.gov/crimnet/ojsa/crimereporting/rape_memo.pdf) in 2012 so they could modify their data collection systems to track crimes under the expanded definition.

At the same time, DCJS modified how it collects data in-house and as a result, can identify rapes reported under each definition, allowing New York State to continue compiling historical trends in rape reporting while also analyzing the impact of expanding the definition of the crime. These changes also provide the Crime Reporting Program with a mechanism to monitor law enforcement agencies’ compliance with new reporting requirements.

New York City implemented the change and in 2013, and began reporting the expanded rape counts to DCJS that year. In 2014, 342 (65%) of the 522 active law enforcement agencies outside New York City either reported rape counts under the expanded definition or had the appropriate technical capabilities to collect the data. Those agencies reported 85 percent of sex offenses outside New York City to DCJS in 2014. Of the 180 agencies that reported no rape counts under the expanded definition in 2014, nearly half (48%) are small agencies that reported no sex offenses during the year and are not expected to report a large number of rapes under the new definition. DCJS is working with the 180 law enforcement agencies that are currently not reporting this information to help them implement the change.

The following appendices provide additional information:

Appendix 7: New York State Rapes by County: 2014 details the total number of rapes reported by county, as well as those offenses that meet the historic definition, and those that are now defined as rape based on the 2013 expansion.

Appendix 8: New York State Rape Arrests by Penal Law: 2014 provides arrest counts for Penal Law Article 130 (Sex Offenses) crimes in two ways: those crimes included in the historical definition of rape and those crimes included under the expanded definition. These arrest statistics were compiled based on top charge, meaning the crime noted was the most serious an individual faced.

Note: Not all crimes result in arrests. As a result, the number of arrests is lower than the number of incidents reported to the New York State Crime Reporting Program.

Appendix 7
New York State Rapes by County: 2014

County	Historical Rape	Expanded Rape	Total Rape	County	Historical Rape	Expanded Rape	Total Rape
Albany	45	52	97	Onondaga	82	62	144
Allegany	9	30	39	Ontario	31	30	61
Bronx	242	284	526	Orange	59	82	141
Broome	45	94	139	Orleans	5	7	12
Cattaraugus	17	24	41	Oswego	33	82	115
Cayuga	23	57	80	Otsego	2	39	41
Chautauqua	32	59	91	Putnam	3	6	9
Chemung	11	14	25	Queens	207	243	450
Chenango	8	30	38	Rensselaer	25	23	48
Clinton	19	53	72	Richmond	31	55	86
Columbia	5	33	38	Rockland	19	40	59
Cortland	13	14	27	St Lawrence	19	38	57
Delaware	7	19	26	Saratoga	23	48	71
Dutchess	26	75	101	Schenectady	39	34	73
Erie	173	147	320	Schoharie	1	9	10
Essex	10	22	32	Schuyler	0	3	3
Franklin	6	31	37	Seneca	5	17	22
Fulton	4	8	12	Steuben	24	49	73
Genesee	20	20	40	Suffolk	48	89	137
Greene	10	22	32	Sullivan	14	37	51
Hamilton	0	1	1	Tioga	5	24	29
Herkimer	11	22	33	Tompkins	14	25	39
Jefferson	26	45	71	Ulster	50	39	89
Kings	347	337	684	Warren	9	28	37
Lewis	2	14	16	Washington	9	20	29
Livingston	5	20	25	Wayne	23	56	79
Madison	9	33	42	Westchester	65	56	121
Monroe	162	176	338	Wyoming	1	9	10
Montgomery	7	10	17	Yates	4	3	7
Nassau	60	53	113				
New York	243	201	444	New York City	1,070	1,120	2,190
Niagara	33	41	74	Non-New York City	1,451	2,268	3,719
Oneida	41	94	135	New York State	2,521	3,388	5,909

Source: DCJS, Uniform Crime/Incident-Based Reporting system.
Includes all reports received as of 4/22/2015.

Appendix 8
New York State Arrests by Penal Law Crime: 2014

New York State Penal Laws - Historical Definition of Rape				
Section	Subsection	Law Description	Arrests	% Historical
130.25		Rape -3rd Degree	146	16.4%
	01	Victim incapable of consent-factor other than less than 17 years old	47	
	03	Without consent-factor other than victim incapable of consent	99	
130.30		Rape -2nd Degree	12	1.4%
	02	No Consent-victim mentally disabled	12	
130.35		Rape -1st Degree	730	82.2%
	00	Unspecified	25	
	01	Sexual intercourse-forcible compulsion	557	
	02	Sexual intercourse- victim incapable of consent/physically helpless	47	
	03	Sexual intercourse with person less than 11 years old	37	
	04	Sexual intercourse-actor over 17 years old, victim under 13 years old	64	
Total Historical Rape Arrests			888	100.0%

Additional New York State Penal Laws included under Expanded Definition of Rape				
Section	Subsection	Law Description	Arrests	% Expanded
130.20		Sexual Misconduct	370	23.1%
130.25		Rape 3rd- Degree	263	16.4%
	00	Unspecified	24	
	02	Victim under 17, perpetrator 21 years old or more	239	
130.30		Rape-2nd Degree	307	19.2%
	00	Unspecified	21	
	01	Actor 18 years old or more, victim under 15 years old	286	
130.40		Criminal Sexual Act-3rd Degree	81	5.1%
130.45		Criminal Sexual Act-2nd Degree	75	4.7%
130.50		Criminal Sexual Act-1st Degree	280	17.5%
130.65-A		Aggravated Sexual Abuse 4th Degree	11	0.7%
130.66		Aggravated Sexual Abuse 3rd Degree	8	0.5%
130.67		Aggravated Sexual Abuse 2nd Degree	14	0.9%
130.70		Aggravated Sexual Abuse 1st Degree	5	0.3%
130.75		Course Of Sexual Conduct Against Child- 1st Degree	79	4.9%
130.80		Course Of Sex Conduct Against Child- 2nd Degree	58	3.6%
130.90		Facilitating A Sex Offense With A Controlled Substance	1	0.1%
130.95		Predatory Sexual Assault	8	0.5%
130.96		Predatory Sex Assault Against Child-Specified Offense Against a Child under 13	41	2.6%
Total Expanded Rape Arrests			1,601	100.0%

Source: DCJS Computerized Criminal History System

Includes all data received as of 04/01/2015