



# New York State Crime Report

Andrew M. Cuomo, Governor

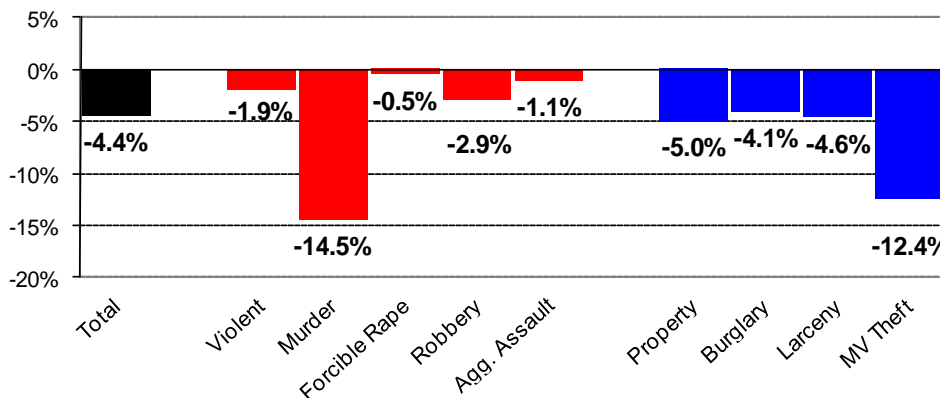
Sean M. Byrne, Acting Commissioner

## Crime in New York State January - June 2011 vs. 2010 *Preliminary Data*

This report provides the most recent information available on the number of Index crimes reported within New York State for the first half of 2011. These figures include all agencies with complete reporting as of September 7, 2011, and represent approximately 97 percent of crime data reported for January through June 2011. All data are preliminary and subject to change.

The Index crimes include the crimes of murder, forcible rape, robbery, aggravated assault, burglary, larceny and motor vehicle theft. Detailed information on crime data for each reporting agency from 2006 through 2010 is available on the DCJS website: [http://criminaljustice.state.ny.us/crimnet/ojsa/indexcrimes/county\\_totals.htm](http://criminaljustice.state.ny.us/crimnet/ojsa/indexcrimes/county_totals.htm)

Figure 1  
**New York State  
Percentage Change in Index Crimes  
January - June 2010 vs. 2011**



- Figure 1 above shows that Index crime in New York State fell 4.4 percent during the first six months of 2011 compared with the same period of 2010. Violent crimes were down almost 2 percent while property crimes decreased by 5 percent. The largest decreases were reported in murders (-14.5%) and motor vehicle thefts (-12.4%).

Table 1  
New York State Index Crime Summary by Region  
January – June 2010 vs. 2011

Region	Jan-Jun	Total	Violent	Forcible			Agg.	Property	Burglary	Larceny	MV
				Murder	Rape	Robbery	Assault				Theft
New York City ( 100.0% coverage)	2010	<b>88,441</b>	<b>23,152</b>	229	459	8,918	13,546	<b>65,289</b>	8,318	51,965	5,006
	2011	<b>88,055</b>	<b>23,822</b>	227	548	8,877	14,170	<b>64,233</b>	8,238	51,725	4,270
	% change	<b>-0.4%</b>	<b>2.9%</b>	-0.9%	19.4%	-0.5%	4.6%	<b>-1.6%</b>	-1.0%	-0.5%	-14.7%
Non-New York City ( 95.0% coverage)	2010	<b>116,331</b>	<b>12,916</b>	165	819	4,012	7,920	<b>103,415</b>	19,649	79,168	4,598
	2011	<b>107,685</b>	<b>11,566</b>	110	724	3,676	7,056	<b>96,119</b>	18,596	73,384	4,139
	% change	<b>-7.4%</b>	<b>-10.5%</b>	-33.3%	-11.6%	-8.4%	-10.9%	<b>-7.1%</b>	-5.4%	-7.3%	-10.0%
New York State ( 97.1% coverage)	2010	<b>204,772</b>	<b>36,068</b>	394	1,278	12,930	21,466	<b>168,704</b>	27,967	131,133	9,604
	2011	<b>195,740</b>	<b>35,388</b>	337	1,272	12,553	21,226	<b>160,352</b>	26,834	125,109	8,409
	% change	<b>-4.4%</b>	<b>-1.9%</b>	-14.5%	-0.5%	-2.9%	-1.1%	<b>-5.0%</b>	-4.1%	-4.6%	-12.4%

## Notes:

Includes only agencies with 6 months complete reporting for both years as of 9/07/2011.

Coverage refers to the proportion of 2010 Index crimes the included agencies represented.

The new Penal Law charges of Strangulation 1st (PL 121.13) and 2nd (PL 121.12), which were enacted in November 2010, are classified as aggravated assaults for crime reporting purposes. Prior to enactment, most of the incidents now classified as Strangulation 2nd (PL 121.12) would have been classified within the UCR as simple assaults. The New York City Police Department has advised DCJS that all of the City's increase in aggravated assault is due to this change in classification.

Source: DCJS, Uniform Crime/Incident-Based Reporting systems.

- Table 1 shows the number of reported Index crimes by region. New York City reported an increase of 2.9 percent in violent crimes and a 1.6 percent drop in property crimes. Increases were reported in forcible rapes and aggravated assaults, while each of the property crimes declined.
- Table 1 also shows that an estimated 95 percent of crime reports have been received by Non-New York City counties for the first six months of 2011. These counties reported a 10.5 percent drop in violent crimes and a 7.1 percent decrease in property crimes. Each of the Index crime categories fell, with the largest decline reported in murders (-33.3%).
- Table 2 provides the number of reported Index crimes for each county outside of New York City. A total of 46 of the 57 counties reported a decrease in overall crime, and 41 reported a decrease in violent crime.
- Table 3 provides an Index crime summary for the 17 primary Operation IMPACT jurisdictions. Among IMPACT jurisdictions, violent crimes decreased 9.6 percent while property crimes dropped 8 percent. The largest decreases were reported in murders (-39.0%) and motor vehicle thefts (-14.0%).

Table 2  
**Index Crime Summary by County for Non-New York City Region**  
 January - June 2010 vs. 2011

County	Jan-Jun	Total	Violent	Forcible			Agg.	Property	Burglary	Larceny	MV
				Murder	Rape	Robbery	Assault				Theft
Non - New York City 95.0% coverage	2010	116,331	12,916	165	819	4,012	7,920	103,415	19,649	79,168	4,598
	2011	107,685	11,566	110	724	3,676	7,056	96,119	18,596	73,384	4,139
	% Change	-7.4%	-10.5%	-33.3%	-11.6%	-8.4%	-10.9%	-7.1%	-5.4%	-7.3%	-10.0%
Albany 97.4% coverage	2010	5,163	534	2	27	162	343	4,629	738	3,731	160
	2011	4,628	522	2	21	177	322	4,106	614	3,371	121
	% Change	-10.4%	-2.2%	0.0%	-22.2%	9.3%	-6.1%	-11.3%	-16.8%	-9.6%	-24.4%
Allegany 99.0% coverage	2010	419	46	0	8	3	35	373	85	279	9
	2011	404	31	0	3	1	27	373	86	280	7
	% Change	-3.6%	-32.6%	NA	-62.5%	-66.7%	-22.9%	0.0%	1.2%	0.4%	-22.2%
Broome 100.0% coverage	2010	2,942	237	3	22	53	159	2,705	443	2,212	50
	2011	3,011	236	2	28	60	146	2,775	467	2,250	58
	% Change	2.3%	-0.4%	-33.3%	27.3%	13.2%	-8.2%	2.6%	5.4%	1.7%	16.0%
Cattaraugus 94.3% coverage	2010	853	89	0	8	5	76	764	176	566	22
	2011	794	71	0	3	8	60	723	155	554	14
	% Change	-6.9%	-20.2%	NA	-62.5%	60.0%	-21.1%	-5.4%	-11.9%	-2.1%	-36.4%
Cayuga 100.0% coverage	2010	857	81	0	8	11	62	776	148	616	12
	2011	762	83	1	13	6	63	679	117	547	15
	% Change	-11.1%	2.5%	NA	62.5%	-45.5%	1.6%	-12.5%	-20.9%	-11.2%	25.0%
Chautauqua 100.0% coverage	2010	1,742	145	1	24	25	95	1,597	333	1,229	35
	2011	1,616	127	1	14	24	88	1,489	345	1,104	40
	% Change	-7.2%	-12.4%	0.0%	-41.7%	-4.0%	-7.4%	-6.8%	3.6%	-10.2%	14.3%
Chemung 100.0% coverage	2010	1,004	99	3	5	19	72	905	179	708	18
	2011	1,038	74	1	8	10	55	964	173	773	18
	% Change	3.4%	-25.3%	-66.7%	60.0%	-47.4%	-23.6%	6.5%	-3.4%	9.2%	0.0%
Chenango 98.4% coverage	2010	446	33	0	10	0	23	413	90	316	7
	2011	446	35	0	7	1	27	411	88	317	6
	% Change	0.0%	6.1%	NA	-30.0%	NA	17.4%	-0.5%	-2.2%	0.3%	-14.3%
Clinton 100.0% coverage	2010	854	50	3	11	6	30	804	154	629	21
	2011	781	34	0	8	1	25	747	152	586	9
	% Change	-8.5%	-32.0%	-100.0%	-27.3%	-83.3%	-16.7%	-7.1%	-1.3%	-6.8%	-57.1%
Columbia 70.4% coverage	2010	509	45	1	5	1	38	464	120	330	14
	2011	488	38	0	2	6	30	450	125	319	6
	% Change	-4.1%	-15.6%	-100.0%	-60.0%	500.0%	-21.1%	-3.0%	4.2%	-3.3%	-57.1%
Cortland 100.0% coverage	2010	475	28	0	4	5	19	447	93	344	10
	2011	537	33	0	7	5	21	504	91	406	7
	% Change	13.1%	17.9%	NA	75.0%	0.0%	10.5%	12.8%	-2.2%	18.0%	-30.0%
Delaware 81.2% coverage	2010	289	18	1	2	1	14	271	80	182	9
	2011	268	30	0	3	6	21	238	68	165	5
	% Change	-7.3%	66.7%	-100.0%	50.0%	500.0%	50.0%	-12.2%	-15.0%	-9.3%	-44.4%
Dutchess 92.5% coverage	2010	2,692	364	7	19	107	231	2,328	455	1,818	55
	2011	2,380	280	5	17	72	186	2,100	378	1,662	60
	% Change	-11.6%	-23.1%	-28.6%	-10.5%	-32.7%	-19.5%	-9.8%	-16.9%	-8.6%	9.1%
Erie 99.6% coverage	2010	15,038	2,219	30	109	794	1,286	12,819	2,797	9,164	858
	2011	13,762	1,924	22	102	726	1,074	11,838	2,563	8,468	807
	% Change	-8.5%	-13.3%	-26.7%	-6.4%	-8.6%	-16.5%	-7.7%	-8.4%	-7.6%	-5.9%
Essex 99.2% coverage	2010	260	18	0	2	0	16	242	74	163	5
	2011	285	21	0	8	0	13	264	90	163	11
	% Change	9.6%	16.7%	NA	300.0%	NA	-18.8%	9.1%	21.6%	0.0%	120.0%

Table 2  
**Index Crime Summary by County for Non-New York City Region**  
**January - June 2010 vs. 2011**

County	Jan-Jun	Total	Forcible					Agg. Assault	Property			MV Theft
			Violent	Murder	Rape	Robbery			Burglary	Larceny		
Franklin 82.3% coverage	2010	388	26	0	10	0	16	362	93	253	16	
	2011	384	31	0	8	0	23	353	85	253	15	
	% Change	-1.0%	19.2%	NA	-20.0%	NA	43.8%	-2.5%	-8.6%	0.0%	-6.3%	
Fulton 100.0% coverage	2010	819	63	0	7	7	49	756	178	546	32	
	2011	681	33	0	8	3	22	648	131	500	17	
	% Change	-16.8%	-47.6%	NA	14.3%	-57.1%	-55.1%	-14.3%	-26.4%	-8.4%	-46.9%	
Genesee 100.0% coverage	2010	550	46	0	8	11	27	504	104	390	10	
	2011	562	47	0	10	6	31	515	94	406	15	
	% Change	2.2%	2.2%	NA	25.0%	-45.5%	14.8%	2.2%	-9.6%	4.1%	50.0%	
Greene 89.8% coverage	2010	365	47	0	4	4	39	318	84	221	13	
	2011	364	48	0	4	6	38	316	93	208	15	
	% Change	-0.3%	2.1%	NA	0.0%	50.0%	-2.6%	-0.6%	10.7%	-5.9%	15.4%	
Hamilton 80.8% coverage	2010	18	1	0	1	0	0	17	8	8	1	
	2011	22	1	0	1	0	0	21	11	9	1	
	% Change	22.2%	0.0%	NA	0.0%	NA	NA	23.5%	37.5%	12.5%	0.0%	
Herkimer 81.9% coverage	2010	592	81	0	7	2	72	511	94	410	7	
	2011	531	65	0	3	6	56	466	93	368	5	
	% Change	-10.3%	-19.8%	NA	-57.1%	200.0%	-22.2%	-8.8%	-1.1%	-10.2%	-28.6%	
Jefferson 97.9% coverage	2010	1,193	118	2	14	14	88	1,075	171	872	32	
	2011	1,029	77	2	8	15	52	952	133	793	26	
	% Change	-13.7%	-34.7%	0.0%	-42.9%	7.1%	-40.9%	-11.4%	-22.2%	-9.1%	-18.8%	
Lewis 100.0% coverage	2010	224	13	0	1	1	11	211	98	105	8	
	2011	154	16	0	2	1	13	138	41	88	9	
	% Change	-31.3%	23.1%	NA	100.0%	0.0%	18.2%	-34.6%	-58.2%	-16.2%	12.5%	
Livingston 97.9% coverage	2010	535	14	1	3	2	8	521	78	437	6	
	2011	438	12	1	3	0	8	426	50	369	7	
	% Change	-18.1%	-14.3%	0.0%	0.0%	-100.0%	0.0%	-18.2%	-35.9%	-15.6%	16.7%	
Madison 94.1% coverage	2010	549	28	1	5	4	18	521	88	427	6	
	2011	488	20	0	6	2	12	468	100	355	13	
	% Change	-11.1%	-28.6%	-100.0%	20.0%	-50.0%	-33.3%	-10.2%	13.6%	-16.9%	116.7%	
Monroe 99.8% coverage	2010	11,848	1,389	25	79	453	832	10,459	2,217	7,745	497	
	2011	10,904	1,227	15	70	409	733	9,677	2,002	7,191	484	
	% Change	-8.0%	-11.7%	-40.0%	-11.4%	-9.7%	-11.9%	-7.5%	-9.7%	-7.2%	-2.6%	
Montgomery 100.0% coverage	2010	477	48	0	2	7	39	429	73	342	14	
	2011	468	18	0	2	7	9	450	89	354	7	
	% Change	-1.9%	-62.5%	NA	0.0%	0.0%	-76.9%	4.9%	21.9%	3.5%	-50.0%	
Nassau 97.8% coverage	2010	9,649	1,074	18	36	478	542	8,575	1,253	6,795	527	
	2011	8,571	1,013	11	28	481	493	7,558	1,171	5,898	489	
	% Change	-11.2%	-5.7%	-38.9%	-22.2%	0.6%	-9.0%	-11.9%	-6.5%	-13.2%	-7.2%	
Niagara 91.7% coverage	2010	2,706	376	4	25	103	244	2,330	677	1,572	81	
	2011	2,498	298	1	24	95	178	2,200	620	1,461	119	
	% Change	-7.7%	-20.7%	-75.0%	-4.0%	-7.8%	-27.0%	-5.6%	-8.4%	-7.1%	46.9%	
Oneida 95.5% coverage	2010	2,607	258	6	17	77	158	2,349	455	1,819	75	
	2011	2,354	255	3	15	51	186	2,099	441	1,593	65	
	% Change	-9.7%	-1.2%	-50.0%	-11.8%	-33.8%	17.7%	-10.6%	-3.1%	-12.4%	-13.3%	
Onondaga 80.0% coverage	2010	4,779	671	8	43	188	432	4,108	1,145	2,751	212	
	2011	4,498	674	4	38	174	458	3,824	946	2,715	163	
	% Change	-5.9%	0.4%	-50.0%	-11.6%	-7.4%	6.0%	-6.9%	-17.4%	-1.3%	-23.1%	

Table 2  
**Index Crime Summary by County for Non-New York City Region**  
 January - June 2010 vs. 2011

County	Jan-Jun	Total	Forcible					Agg. Assault	Property	Burglary	Larceny	MV Theft
			Violent	Murder	Rape	Robbery						
Ontario 99.2% coverage	2010	911	66	1	10	17	38	845	138	693	14	
	2011	892	78	0	13	14	51	814	149	651	14	
	% Change	-2.1%	18.2%	-100.0%	30.0%	-17.6%	34.2%	-3.7%	8.0%	-6.1%	0.0%	
Orange 93.8% coverage	2010	4,359	494	7	34	147	306	3,865	519	3,242	104	
	2011	3,843	391	5	24	159	203	3,452	489	2,852	111	
	% Change	-11.8%	-20.9%	-28.6%	-29.4%	8.2%	-33.7%	-10.7%	-5.8%	-12.0%	6.7%	
Orleans 34.4% coverage	2010	179	17	0	1	0	16	162	38	118	6	
	2011	146	12	0	3	2	7	134	30	102	2	
	% Change	-18.4%	-29.4%	NA	200.0%	NA	-56.3%	-17.3%	-21.1%	-13.6%	-66.7%	
Oswego 98.8% coverage	2010	1,400	93	1	16	16	60	1,307	322	941	44	
	2011	1,375	84	0	10	6	68	1,291	291	959	41	
	% Change	-1.8%	-9.7%	-100.0%	-37.5%	-62.5%	13.3%	-1.2%	-9.6%	1.9%	-6.8%	
Otsego 97.4% coverage	2010	589	71	0	7	7	57	518	145	360	13	
	2011	558	67	1	2	7	57	491	115	368	8	
	% Change	-5.3%	-5.6%	NA	-71.4%	0.0%	0.0%	-5.2%	-20.7%	2.2%	-38.5%	
Putnam 99.9% coverage	2010	393	29	0	2	4	23	364	62	291	11	
	2011	418	38	0	2	4	32	380	76	301	3	
	% Change	6.4%	31.0%	NA	0.0%	0.0%	39.1%	4.4%	22.6%	3.4%	-72.7%	
Rensselaer 97.7% coverage	2010	2,175	274	2	19	73	180	1,901	424	1,383	94	
	2011	2,047	227	0	20	54	153	1,820	495	1,262	63	
	% Change	-5.9%	-17.2%	-100.0%	5.3%	-26.0%	-15.0%	-4.3%	16.7%	-8.7%	-33.0%	
Rockland 99.4% coverage	2010	2,282	196	2	4	55	135	2,086	284	1,752	50	
	2011	2,051	246	2	13	70	161	1,805	214	1,545	46	
	% Change	-10.1%	25.5%	0.0%	225.0%	27.3%	19.3%	-13.5%	-24.6%	-11.8%	-8.0%	
St. Lawrence 85.3% coverage	2010	920	65	0	14	7	44	855	193	635	27	
	2011	892	51	0	8	1	42	841	202	622	17	
	% Change	-3.0%	-21.5%	NA	-42.9%	-85.7%	-4.5%	-1.6%	4.7%	-2.0%	-37.0%	
Saratoga 98.8% coverage	2010	1,470	84	0	14	13	57	1,386	224	1,124	38	
	2011	1,290	67	1	7	11	48	1,223	192	1,011	20	
	% Change	-12.2%	-20.2%	NA	-50.0%	-15.4%	-15.8%	-11.8%	-14.3%	-10.1%	-47.4%	
Schenectady 93.7% coverage	2010	2,580	356	5	32	117	202	2,224	458	1,652	114	
	2011	2,331	326	2	21	100	203	2,005	464	1,420	121	
	% Change	-9.7%	-8.4%	-60.0%	-34.4%	-14.5%	0.5%	-9.8%	1.3%	-14.0%	6.1%	
Schoharie 84.2% coverage	2010	171	6	0	0	1	5	165	26	135	4	
	2011	189	8	0	2	1	5	181	52	124	5	
	% Change	10.5%	33.3%	NA	NA	0.0%	0.0%	9.7%	100.0%	-8.1%	25.0%	
Schuyler 67.3% coverage	2010	60	2	0	0	0	2	58	8	49	1	
	2011	42	3	0	1	0	2	39	5	34	0	
	% Change	-30.0%	50.0%	NA	NA	NA	0.0%	-32.8%	-37.5%	-30.6%	-100.0%	
Seneca 100.0% coverage	2010	335	26	0	8	1	17	309	74	230	5	
	2011	286	26	1	4	1	20	260	50	199	11	
	% Change	-14.6%	0.0%	NA	-50.0%	0.0%	17.6%	-15.9%	-32.4%	-13.5%	120.0%	
Steuben 99.1% coverage	2010	876	87	2	12	5	68	789	156	614	19	
	2011	692	48	1	9	7	31	644	130	500	14	
	% Change	-21.0%	-44.8%	-50.0%	-25.0%	40.0%	-54.4%	-18.4%	-16.7%	-18.6%	-26.3%	
Suffolk 94.3% coverage	2010	14,516	1,123	16	29	417	661	13,393	1,939	10,669	785	
	2011	13,198	954	15	27	331	581	12,244	2,011	9,643	590	
	% Change	-9.1%	-15.0%	-6.3%	-6.9%	-20.6%	-12.1%	-8.6%	3.7%	-9.6%	-24.8%	

Table 2  
**Index Crime Summary by County for Non-New York City Region**  
**January – June 2010 vs. 2011**

County	Jan-Jun	Total	Forcible					Agg.	MV		
			Violent	Murder	Rape	Robbery	Assault	Property	Burglary	Larceny	Theft
Sullivan 86.0% coverage	2010	679	92	1	9	17	65	587	187	380	20
	2011	739	78	1	8	7	62	661	200	440	21
	% Change	8.8%	-15.2%	0.0%	-11.1%	-58.8%	-4.6%	12.6%	7.0%	15.8%	5.0%
Tioga 85.8% coverage	2010	248	16	0	3	0	13	232	60	170	2
	2011	202	9	0	0	1	8	193	48	137	8
	% Change	-18.5%	-43.8%	NA	-100.0%	NA	-38.5%	-16.8%	-20.0%	-19.4%	300.0%
Tompkins 83.2% coverage	2010	937	42	0	7	11	24	895	107	773	15
	2011	752	20	0	1	4	15	732	86	640	6
	% Change	-19.7%	-52.4%	NA	-85.7%	-63.6%	-37.5%	-18.2%	-19.6%	-17.2%	-60.0%
Ulster 95.1% coverage	2010	1,673	189	1	19	29	140	1,484	291	1,134	59
	2011	1,756	149	0	19	33	97	1,607	358	1,206	43
	% Change	5.0%	-21.2%	-100.0%	0.0%	13.8%	-30.7%	8.3%	23.0%	6.3%	-27.1%
Warren 100.0% coverage	2010	612	51	0	9	7	35	561	101	454	6
	2011	588	42	0	8	6	28	546	80	454	12
	% Change	-3.9%	-17.6%	NA	-11.1%	-14.3%	-20.0%	-2.7%	-20.8%	0.0%	100.0%
Washington 98.5% coverage	2010	416	45	0	7	3	35	371	100	257	14
	2011	346	37	0	4	2	31	309	72	232	5
	% Change	-16.8%	-17.8%	NA	-42.9%	-33.3%	-11.4%	-16.7%	-28.0%	-9.7%	-64.3%
Wayne 62.1% coverage	2010	577	45	0	5	7	33	532	133	390	9
	2011	562	47	0	9	11	27	515	162	337	16
	% Change	-2.6%	4.4%	NA	80.0%	57.1%	-18.2%	-3.2%	21.8%	-13.6%	77.8%
Westchester 93.2% coverage	2010	6,698	1,165	11	28	514	612	5,533	786	4,435	312
	2011	6,954	1,164	10	33	485	636	5,790	916	4,555	319
	% Change	3.8%	-0.1%	-9.1%	17.9%	-5.6%	3.9%	4.6%	16.5%	2.7%	2.2%
Wyoming 100.0% coverage	2010	227	19	0	2	0	17	208	45	157	6
	2011	212	17	0	2	0	15	195	46	141	8
	% Change	-6.6%	-10.5%	NA	0.0%	NA	-11.8%	-6.3%	2.2%	-10.2%	33.3%
Yates 100.0% coverage	2010	206	4	0	2	1	1	202	48	150	4
	2011	178	3	0	0	0	3	175	51	123	1
	% Change	-13.6%	-25.0%	NA	-100.0%	-100.0%	200.0%	-13.4%	6.3%	-18.0%	-75.0%

Note: includes only agencies with 6 months complete reporting for both years as of 9/07/11.

Percentage change is not applicable if the count in 2010 was zero.

Coverage refers to the proportion of 2010 Index crimes the included agencies represented.

Source: DCJS, Uniform Crime/Incident-Based Reporting systems.

Table 3  
Index Crime Summary for IMPACT Agencies  
January - June 2010 vs. 2011

PD	Jan-Jun	Total	Forcible					Agg. Assault	MV		
			Violent	Murder	Rape	Robbery	Property		Burglary	Larceny	Theft
All IMPACT Agencies	2010	53,267	7,784	118	339	2,823	4,504	45,483	9,618	32,918	2,947
	2011	48,898	7,040	72	298	2,615	4,055	41,858	9,254	30,070	2,534
	% Change	-8.2%	-9.6%	-39.0%	-12.1%	-7.4%	-10.0%	-8.0%	-3.8%	-8.7%	-14.0%
Albany City PD	2010	2,647	451	2	16	134	299	2,196	414	1,674	108
	2011	2,438	438	2	15	153	268	2,000	362	1,549	89
	% Change	-7.9%	-2.9%	0.0%	-6.3%	14.2%	-10.4%	-8.9%	-12.6%	-7.5%	-17.6%
Binghamton City PD	2010	1,043	119	2	6	24	87	924	175	737	12
	2011	1,102	110	0	8	32	70	992	162	796	34
	% Change	5.7%	-7.6%	-100.0%	33.3%	33.3%	-19.5%	7.4%	-7.4%	8.0%	183.3%
Buffalo City PD	2010	8,612	1,769	26	71	696	976	6,843	1,872	4,293	678
	2011	7,950	1,491	20	62	617	792	6,459	1,812	4,029	618
	% Change	-7.7%	-15.7%	-23.1%	-12.7%	-11.4%	-18.9%	-5.6%	-3.2%	-6.1%	-8.8%
Jamestown City PD	2010	659	78	0	14	13	51	581	144	417	20
	2011	592	88	0	7	17	64	504	151	339	14
	% Change	-10.2%	12.8%	NA	-50.0%	30.8%	25.5%	-13.3%	4.9%	-18.7%	-30.0%
Kingston City PD	2010	308	42	1	2	13	26	266	73	181	12
	2011	347	46	0	2	19	25	301	52	243	6
	% Change	12.7%	9.5%	-100.0%	0.0%	46.2%	-3.8%	13.2%	-28.8%	34.3%	-50.0%
Nassau County PD	2010	7,470	698	13	33	294	358	6,772	916	5,475	381
	2011	6,629	669	3	16	322	328	5,960	838	4,763	359
	% Change	-11.3%	-4.2%	-76.9%	-51.5%	9.5%	-8.4%	-12.0%	-8.5%	-13.0%	-5.8%
Newburgh City PD	2010	823	245	5	5	75	160	578	148	399	31
	2011	737	218	3	4	110	101	519	135	354	30
	% Change	-10.4%	-11.0%	-40.0%	-20.0%	46.7%	-36.9%	-10.2%	-8.8%	-11.3%	-3.2%
Niagara Falls City PD	2010	1,661	302	4	13	79	206	1,359	455	844	60
	2011	1,499	246	1	17	78	150	1,253	354	825	74
	% Change	-9.8%	-18.5%	-75.0%	30.8%	-1.3%	-27.2%	-7.8%	-22.2%	-2.3%	23.3%
Poughkeepsie City PD	2010	689	219	5	10	77	127	470	101	346	23
	2011	612	153	4	7	58	84	459	128	313	18
	% Change	-11.2%	-30.1%	-20.0%	-30.0%	-24.7%	-33.9%	-2.3%	26.7%	-9.5%	-21.7%
Rochester City PD	2010	6,427	1,090	21	48	380	641	5,337	1,489	3,456	392
	2011	5,987	937	14	45	314	564	5,050	1,361	3,379	310
	% Change	-6.8%	-14.0%	-33.3%	-6.3%	-17.4%	-12.0%	-5.4%	-8.6%	-2.2%	-20.9%
Schenectady City PD	2010	1,841	330	5	31	110	184	1,511	353	1,059	99
	2011	1,743	303	2	21	97	183	1,440	404	941	95
	% Change	-5.3%	-8.2%	-60.0%	-32.3%	-11.8%	-0.5%	-4.7%	14.4%	-11.1%	-4.0%
Spring Valley Village PD	2010	325	55	1	0	18	36	270	57	202	11
	2011	292	70	0	4	30	36	222	40	172	10
	% Change	-10.2%	27.3%	-100.0%	NA	66.7%	0.0%	-17.8%	-29.8%	-14.9%	-9.1%
Suffolk County PD	2010	13,037	975	16	24	392	543	12,062	1,713	9,611	738
	2011	11,913	838	15	21	310	492	11,075	1,814	8,695	566
	% Change	-8.6%	-14.1%	-6.3%	-12.5%	-20.9%	-9.4%	-8.2%	5.9%	-9.5%	-23.3%
Syracuse City PD	2010	3,318	596	7	38	169	382	2,722	955	1,599	168
	2011	2,937	610	3	30	161	416	2,327	738	1,468	121
	% Change	-11.5%	2.3%	-57.1%	-21.1%	-4.7%	8.9%	-14.5%	-22.7%	-8.2%	-28.0%

Table 3  
**Index Crime Summary for IMPACT Agencies**  
 January - June 2010 vs. 2011

PD	Jan-Jun	Total	Forcible					Agg. Assault	MV		
			Violent	Murder	Rape	Robbery	Property		Burglary	Larceny	Theft
Troy City PD	2010	<b>1,340</b>	<b>223</b>	2	13	66	142	<b>1,117</b>	315	742	60
	2011	<b>1,190</b>	<b>172</b>	0	12	47	113	<b>1,018</b>	347	629	42
	% Change	<b>-11.2%</b>	<b>-22.9%</b>	-100.0%	-7.7%	-28.8%	-20.4%	<b>-8.9%</b>	10.2%	-15.2%	-30.0%
Utica City PD	2010	<b>1,334</b>	<b>182</b>	2	8	68	104	<b>1,152</b>	220	895	37
	2011	<b>1,173</b>	<b>186</b>	2	10	39	135	<b>987</b>	226	727	34
	% Change	<b>-12.1%</b>	<b>2.2%</b>	0.0%	25.0%	-42.6%	29.8%	<b>-14.3%</b>	2.7%	-18.8%	-8.1%
Yonkers City PD	2010	<b>1,733</b>	<b>410</b>	6	7	215	182	<b>1,323</b>	218	988	117
	2011	<b>1,757</b>	<b>465</b>	3	17	211	234	<b>1,292</b>	330	848	114
	% Change	<b>1.4%</b>	<b>13.4%</b>	-50.0%	142.9%	-1.9%	28.6%	<b>-2.3%</b>	51.4%	-14.2%	-2.6%

Note: Percentage change is not applicable if the count in 2010 was zero.

Source: DCJS, Uniform Crime/Incident-Based Reporting systems (as of 9/07/11).

NYS Division of Criminal Justice Services  
 Office of Justice Research and Performance

For further information, please contact us at: [stats@dcjs.state.ny.us](mailto:stats@dcjs.state.ny.us)  
 Additional publications are available at: <http://criminaljustice.state.ny.us>